

Joint Resolution of Mantorville Township and the City of Kasson, MN # 8.3-05

RESOLUTION ORDERING ANNEXATION PURSUANT TO THE TERMS OF THE ORDERLY ANNEXATION AGREEMENT BETWEEN MANTORVILLE TOWNSHIP AND THE CITY OF KASSON, AND MINNESOTA STATE STATUTE § 414.0325

BE IT RESOLVED BY THE CITY COUNCIL OF KASSON, MINNESOTA AND THE TOWNSHIP OF MANTORVILLE, MN as follows:

1. That the owners of the land being annexed are Bigelow Enterprises, LLC, and the land is described as that of platted and unplatted property containing approximately 49.1 acres more or less.
2. The land is within the designated Orderly Annexation Area, pursuant to Minnesota State Statute §414.0325.
3. The legal description of the property is attached.
4. Request for annexation to the City of Kasson and detachment from Mantorville Township is for the extension of municipal infrastructure and the construction of local improvements.
5. No consideration by the Director of Strategic and Long Range Planning is necessary, although the Director may review and comment. However, within 30 days the Director shall order their annexation in accordance with the terms of said Orderly Annexation Agreement and joint resolution.

BE IT FURTHER RESOLVED that the Township of Mantorville does not object to, nor will contest, the annexation of said lands into the Kasson corporate limits.

BE IT FURTHER RESOLVED that the above referenced property is hereby annexed, added to and made a part of the City of Kasson, Minnesota, as effectually as if it had originally been a part thereof.

Passed and adopted this 1st day of August, 2005.

Andy Buchwalter
Chair, Township of Mantorville

Quane Dutton
Mayor, City of Kasson, MN

ATTEST:
Sharon M. Ness
Clerk, Township of Mantorville

ATTEST:
Michael Rief
City Administrator, City of Kasson, MN

July 20, 2005

ANNEXATION DESCRIPTION FOR BIGELOW-VOIGT

That part of the South Half of the Southeast Quarter of Section 29, Township 107 North, Range 16 West, Dodge County, Minnesota, described as follows:

Commencing at the southwest corner of the Southeast Quarter of said Section 29; thence North 00 degrees 02 minutes 44 seconds West (NOTE: All bearings are in relationship with the Dodge County Coordinate System, NAD '83, Adjusted 1996) along the west line of said Southeast Quarter, 113.00 feet to the northwest corner of BIGELOW-VOIGT FIFTH SUBDIVISION, and to the POINT OF BEGINNING; thence South 89 degrees 41 minutes 29 seconds East along the north line of said BIGELOW-VOIGT FIFTH SUBDIVISION and along the north line of BIGELOW-VOIGT FOURTH SUBDIVISION, 1048.14 feet to the northwest corner of Lot 1, Block 1, BIGELOW-VOIGT THIRD SUBDIVISION; thence North 89 degrees 40 minutes 02 seconds East along the north line of said Lot 1, for a distance of 120.00 feet to the northeast corner thereof; thence North 00 degrees 19 minutes 56 seconds West along the west line of Lot 2, said Block 3, for a distance of 38.67 feet to the northwest corner thereof; thence South 89 degrees 41 minutes 29 seconds East along the north line of said Lot 2, for a distance of 15.00 feet, to the southwest corner of BIGELOW-VOIGT SIXTH SUBDIVISION; thence North 00 degrees 19 minutes 25 seconds West along the west line of said BIGELOW-VOIGT SIXTH SUBDIVISION, 701.55 feet to the northwest corner of said BIGELOW-VOIGT SIXTH SUBDIVISION; thence South 82 degrees 36 minutes 24 seconds East, along the north line of said BIGELOW-VOIGT SIXTH SUBDIVISION, 138.82 feet; thence North 89 degrees 45 minutes 29 seconds East, along said north line, 66.77 feet; thence South 89 degrees 41 minutes 29 seconds East, along said north line, 114.67 feet; thence North 74 degrees 16 minutes 51 seconds East, along said north line, 70.53 feet; thence South 77 degrees 28 minutes 56 seconds East, along said north line, 128.29 feet; thence North 70 degrees 55 minutes 56 seconds East, along said north line, 82.59 feet; thence South 65 degrees 59 minutes 01 seconds East, along said north line, 128.93 feet; thence South 89 degrees 59 minutes 59 seconds East, along said north line, 753.46 feet, to the northeast corner of said subdivision and to the east line of the Southeast Quarter of said Section 29; thence North 00 degrees 00 minutes 01 seconds East, along said east line, 504.14 feet to the northeast corner of the South Half of said Southeast Quarter; thence North 89 degrees 36 minutes 08 seconds West along the north line of said South Half of the

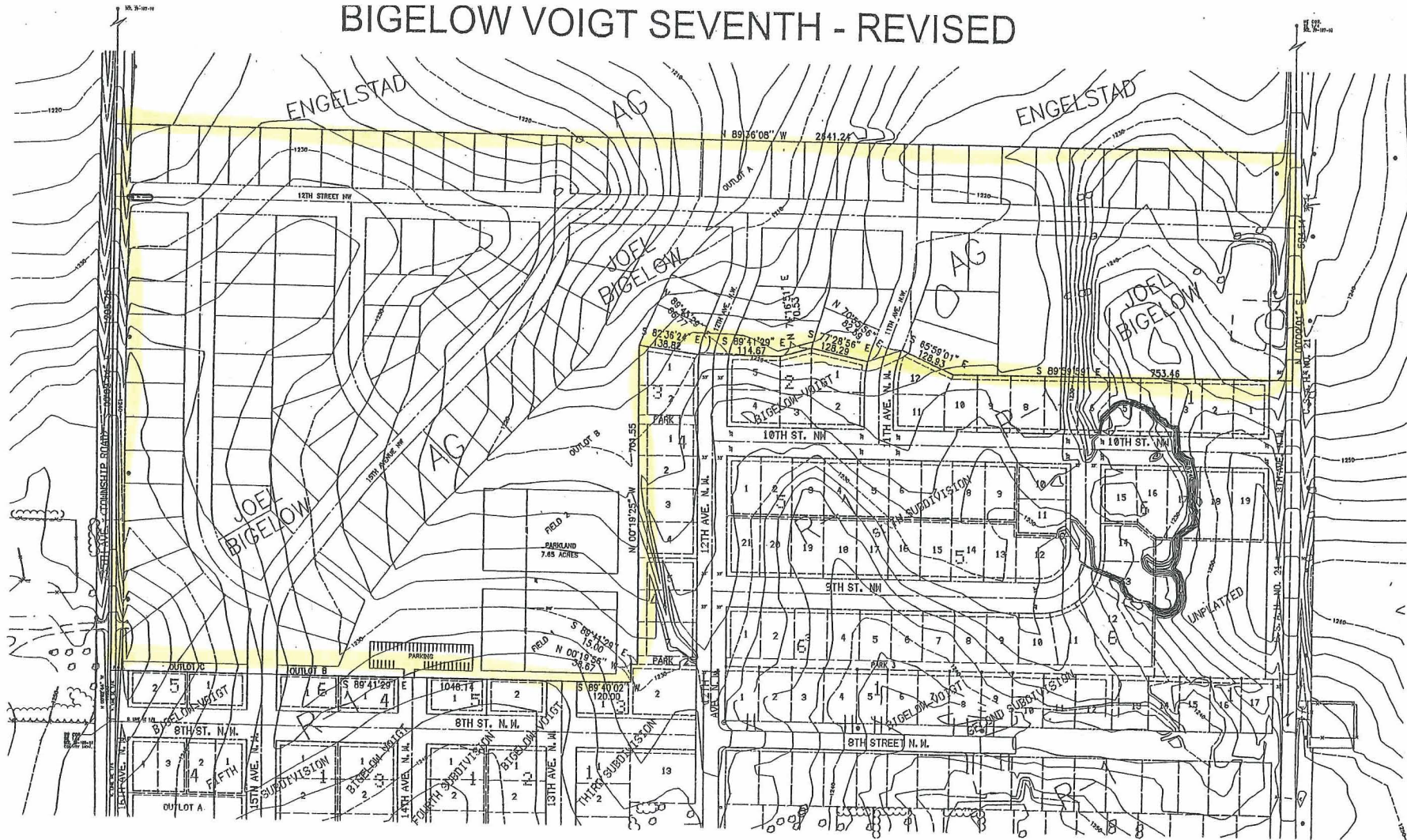
REC'D BY
MMA

AUG 18 2005

Southeast Quarter, 2641.24 to the northwest corner thereof; thence South 00 degrees 02 minutes 44 seconds East along the west line of said South Half of the Southeast Quarter, 1205.26 feet to the POINT OF BEGINNING.

Said parcel contains 49.10 acres more or less.

BIGELOW VOIGT SEVENTH - REVISED



OWNER
BIGELOW ENTERPRISES, INC.
706 COUNTY ROAD 3 NW
BYRON, MN 55920

BASIS OF BEARINGS
All Bearings are in relationship with
the Dodge County Coordinate System
MGS 83, Adjusted 1998.

0 50 100 150 200
SCALE IN FEET

I hereby certify that this survey, plan, or report was
prepared by me or under my direct supervision and
that I am a duly licensed Land Surveyor under the
laws of the State of Minnesota.
Date 7-26-05
REG. NO. 91814

MASSEY LAND SURVEYING, INC.
SURVEYORS AND ENGINEERS
P.O. BOX 428
KASSON, MN 55944
PH. NO. 507-634-4505



REVISED GENERAL DEVELOPMENT PLAN
BIGELOW VOIGT SEVENTH
SECTION 29
CITY OF KASSON, MINNESOTA

PROPERTY LOCATION MAP			
1 10' N. E. 1/4	2 10' N. E. 1/4	3 10' N. E. 1/4	4 10' N. E. 1/4
5 10' N. E. 1/4	6 10' N. E. 1/4	7 10' N. E. 1/4	8 10' N. E. 1/4
9 10' N. E. 1/4	10 10' N. E. 1/4	11 10' N. E. 1/4	12 10' N. E. 1/4
13 10' N. E. 1/4	14 10' N. E. 1/4	15 10' N. E. 1/4	16 10' N. E. 1/4
17 10' N. E. 1/4	18 10' N. E. 1/4	19 10' N. E. 1/4	20 10' N. E. 1/4
21 10' N. E. 1/4	22 10' N. E. 1/4	23 10' N. E. 1/4	24 10' N. E. 1/4
25 10' N. E. 1/4	26 10' N. E. 1/4	27 10' N. E. 1/4	28 10' N. E. 1/4
29 10' N. E. 1/4	30 10' N. E. 1/4	31 10' N. E. 1/4	32 10' N. E. 1/4

ADDITIONAL
• FOUND (AS INDICATED)
• SET (BY THE SURVEYOR)
• PHOTO (OTHERWISE)
SCALE: 1" = 100'
DATE: 07/11/05
DRAWN BY: K.A.S./J.A.S.
JOB NUMBER: 1182
DWG. FILE: 1182002P01.DWG
REVISION DATE:

THIS DOCUMENT
COPYRIGHTED BY:
MASSEY LAND
SURVEYING, INC.

THIS SURVEY AND DRAWING
WAS PREPARED FOR THE
EXCLUSIVE USE OF:
BIGELOW ENTERPRISES
BYRON, MN

SHEET NO. 1 OF 1

REC'D BY
MMB

AUG 18 2005