

REC'D. BY
JAN 29 2001

RESOLUTION NO. 2001-1

IN THE MATTER OF THE AMENDMENT TO THE
JOINT RESOLUTION FOR ORDERLY ANNEXATION BETWEEN
THE TOWN OF MONTICELLO AND THE
CITY OF MONTICELLO, MINNESOTA
PURSUANT TO MINNESOTA STATUTES 414.0325, SUBD. 1

TO: Minnesota State Planning Agency
Municipal Boundary Adjustments
300 Centennial Building
685 Cedar Street
St. Paul, MN 55155

The Town of Monticello and the City of Monticello hereby jointly agree that the joint resolution between the Town of Monticello and the City of Monticello designating an area for orderly annexation dated March 6, 1998, be amended to include the following:

Both the Town and the City agree that no alteration of the stated boundaries of this agreement is appropriate. Furthermore, both parties agree that no consideration by the Board is necessary. Upon receipt of this resolution, the Municipal Board may review and comment but shall, within 30 days, order the annexation of the following described property in accordance with the terms of the joint resolution:

Property known as: Groveland Subdivision (Portion of Phase II)

(SEE ATTACHED LEGAL DESCRIPTION, EXHIBIT A)

Approved by the City of Monticello this 8th day of January, 2001.

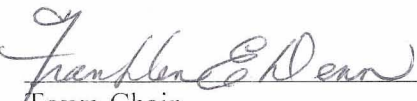


City Administrator

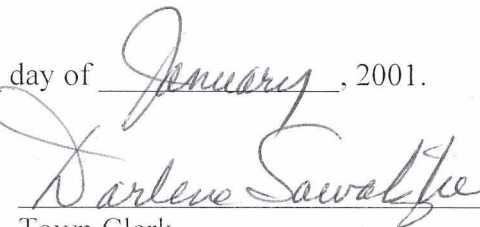


Mayor

Approved by the Town of Monticello this 16th day of January, 2001.



Town Chair



Town Clerk

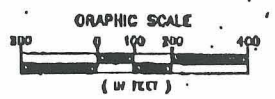
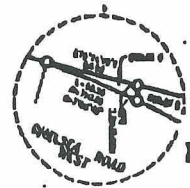
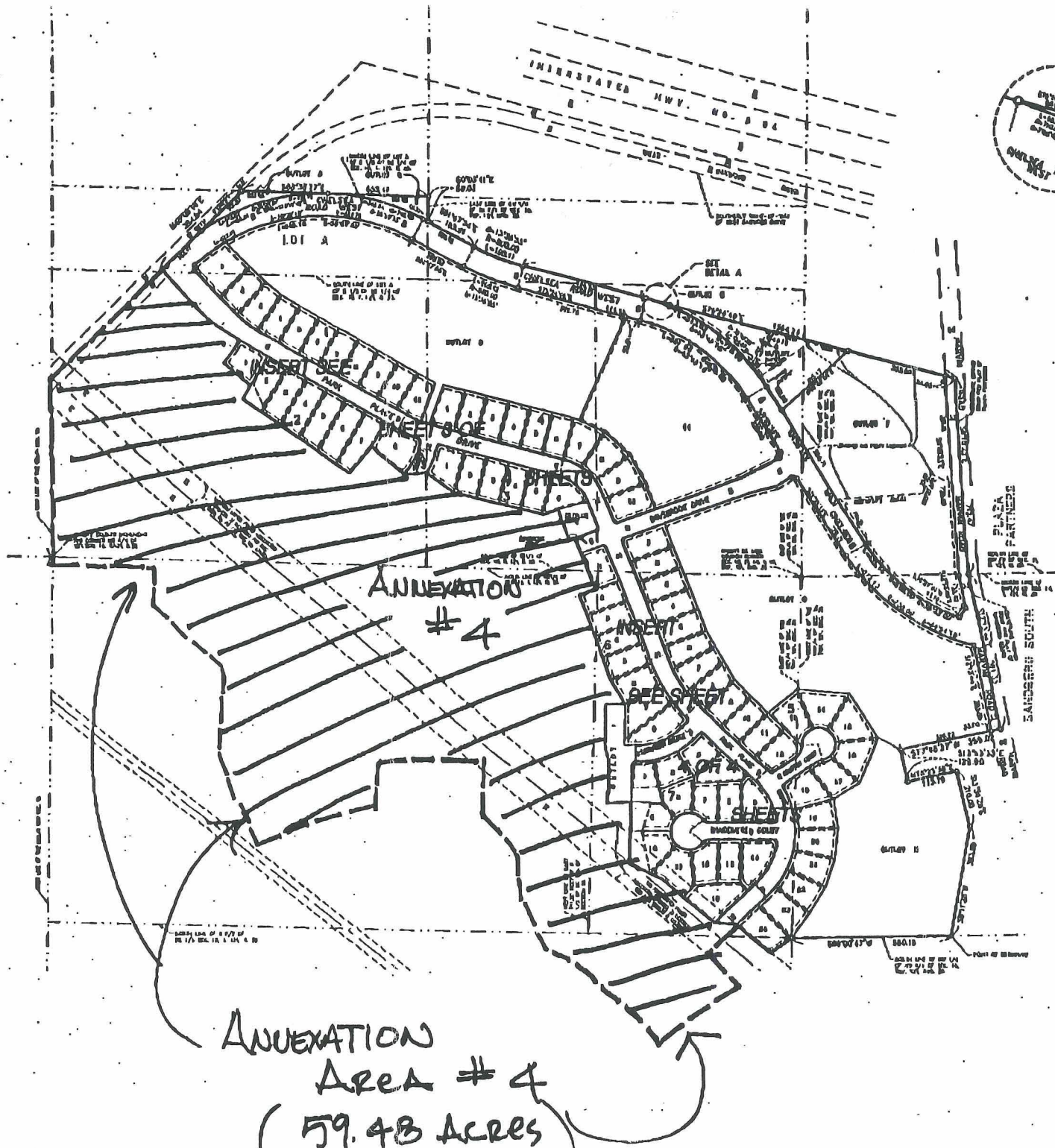
Annexation Description

REC'D. BY
MMJ JAN 29 2001

That part of the Southeast Quarter of Section 10 and that part of the Northeast Quarter of Section 15, all in Township 121 North, Range 25 West, Wright County, Minnesota described together as follows:

Beginning at the northwest corner of said Northeast Quarter of Section 15; thence South 0 degrees 05 minutes 54 seconds West a distance of 30.01 feet along the west line of said Northeast Quarter; thence South 88 degrees 26 minutes 47 seconds East a distance of 360.14 feet, parallel with the north line of said Northeast Quarter; thence South 00 degrees 05 minutes 54 seconds West a distance of 137.24 feet; thence South 49 degrees 35 minutes 12 seconds East a distance of 326.40 feet; thence South 02 degrees 16 minutes 26 seconds West a distance of 294.19 feet; thence South 16 degrees 24 minutes 19 seconds East a distance of 155.15 feet; thence South 36 degrees 57 minutes 06 seconds East a distance of 61.86 feet; thence South 22 degrees 52 minutes 08 seconds East a distance of 150.00 feet; thence North 67 degrees 07 minutes 52 seconds East a distance of 212.20 feet; thence North 75 degrees 50 minutes 26 seconds East a distance of 226.64 feet; thence North 00 degrees 34 minutes 06 seconds East a distance of 159.81 feet; thence easterly a distance of 127.64 feet along a nontangential curve concave to the south, having a central angle of 12 degrees 49 minutes 50 seconds, a radius of 570.00 feet, a chord bearing of North 84 degrees 29 minutes 57 seconds East and a chord of 127.38 feet; thence South 89 degrees 05 minutes 08 seconds East a distance of 244.12 feet; thence South 00 degrees 54 minutes 52 seconds West a distance of 193.98 feet; thence South 44 degrees 14 minutes 32 seconds East a distance of 166.98 feet; thence South 06 degrees 15 minutes 58 seconds East a distance of 172.75 feet; thence South 30 degrees 07 minutes 48 seconds East a distance of 49.51 feet; thence South 22 degrees 16 minutes 45 seconds East a distance of 168.89 feet; thence South 68 degrees 26 minutes 27 seconds East a distance of 93.35 feet; thence South 46 degrees 23 minutes 20 seconds East a distance of 233.57 feet; thence South 48 degrees 22 minutes 31 seconds East a distance of 60.04 feet; thence South 46 degrees 11 minutes 48 seconds East a distance of 150.00 feet; thence North 48 degrees 04 minutes 59 seconds East a distance of 71.25 feet; thence North 53 degrees 34 minutes 38 seconds East a distance of 281.25 feet; thence North 50 degrees 28 minutes 46 seconds West a distance of 159.90 feet; thence North 45 degrees 41 minutes 20 seconds East a distance of 150.11 feet to the most southerly corner of Groveland Addition, according to the recorded plat thereof, Wright County, Minnesota, also being the most southerly corner of Lot 24, Block 5, said Groveland Addition; thence North 84 degrees 43 minutes 36 seconds West a distance of 78.81 feet along the boundary line of said Groveland Addition; thence North 49 degrees 54 minutes 26 seconds West a distance of 240.11 feet along said boundary line; thence North 63 degrees 56 minutes 27 seconds West a distance of 128.23 feet, continuing along said boundary line; thence North 0 degrees 54 minutes 52 seconds East a distance of 221.02 feet, continuing along said boundary line; thence South 88 degrees 29 minutes 16 seconds West a distance of 80.07, feet continuing along said boundary line; thence North 0 degrees 54 minutes 52 seconds East a distance of 158.14 feet continuing along said boundary line; thence North 13 degrees 42 minutes 34 seconds West a distance of 62.01 feet along said boundary line; thence North 0 degrees 54 minutes 52 seconds East a

distance of 145.60 feet, continuing along said boundary line; thence South 89 degrees 05 minutes 08 seconds East a distance of 65.62 feet continuing along said boundary line; thence North 30 degrees 40 minutes 59 seconds West a distance of 96.77 feet continuing along said boundary line; thence North 20 degrees 41 minutes 36 seconds West a distance of 323.56 feet, continuing along said boundary line; thence North 69 degrees 15 minutes 56 seconds East a distance of 60.00 feet, continuing along said boundary line; thence North 20 degrees 38 minutes 59 seconds West a distance of 203.00 feet, continuing along said boundary line; thence South 69 degrees 15 minutes 56 seconds West a distance of 20.21 feet continuing along said boundary line; thence North 20 degrees 44 minutes 04 seconds West a distance of 119.32 feet, continuing along said boundary line; thence South 69 degrees 15 minutes 56 seconds West a distance of 54.07 feet, continuing along said boundary line; thence North 75 degrees 24 minutes 32 seconds West a distance of 327.29 feet continuing along said boundary line; thence North 54 degrees 46 minutes 20 seconds West a distance of 119.12 feet, continuing along said boundary line; thence South 86 degrees 00 minutes 18 seconds West a distance of 78.77 feet, continuing along said boundary line; thence North 49 degrees 35 minutes 12 seconds West a distance of 150.00 feet, continuing along said boundary line; thence South 40 degrees 24 minutes 48 seconds West a distance of 122.87 feet, continuing along said boundary line; thence North 55 degrees 01 minutes 01 seconds West a distance of 458.93 feet, continuing along said boundary line; thence North 29 degrees 34 minutes 11 seconds East a distance of 56.65 feet, continuing along said boundary line; thence North 50 degrees 03 minutes 37 seconds West a distance of 125.11 feet, continuing along said boundary line; thence northeasterly a distance of 62.19 feet along a nontangential curve, concave northwesterly, having a central angle of 6 degrees 43 minutes 22 seconds, a radius of 530.00 feet, a chord bearing of North 36 degrees 34 minutes 41 seconds East and a chord of 62.15 feet, continuing along said boundary line; thence North 33 degrees 13 minutes 00 seconds East, tangent to said curve, a distance of 35.86 feet, continuing along said boundary line; thence North 58 degrees 05 minutes 44 seconds West a distance of 60.02 feet, continuing along said boundary line; thence North 55 degrees 56 minutes 19 seconds West a distance of 22.19 feet, continuing along said boundary line; thence northwesterly a distance of 111.92 feet along a tangential curve, concave northeasterly, having a central angle of 12 degrees 49 minutes 31 seconds and a radius of 500.00 feet, continuing along said boundary line; thence North 43 degrees 06 minutes 48 seconds West, tangent to said curve, a distance of 179.82 feet, continuing along said boundary line, to the centerline of 90th Street Northeast; thence South 45 degrees 06 minutes 16 seconds West, along said centerline to the west line of said Southeast Quarter of Section 10; thence South 00 degrees 20 minutes 16 seconds East, along said west line, a distance of 645.00 feet, to the point of beginning.



- INDICATES IRON PIPE MONUMENT FOUND.
- DENOTES 1/2 INCH BY 1/4 INCH IRON PIPE MONUMENT TO BE SET AND MARKED BY LOCUS NO. 80018 WITHIN ONE YEAR OF RECORDING OF THIS PLAN.
- FOR THE PURPOSES OF THIS SURVEY THE SOUTH LINE OF THE NORTHWEST QUARTER OF THE NORTHWEST QUARTER OF SECTION 16, TOWNSHIP 10N, RANGE 26E, HAS AN ASSUMED BEARING OF S 89°00'17" W.

PRINTED

JAN 03 2001

McCombs Frank
Roos Assoc., Inc.

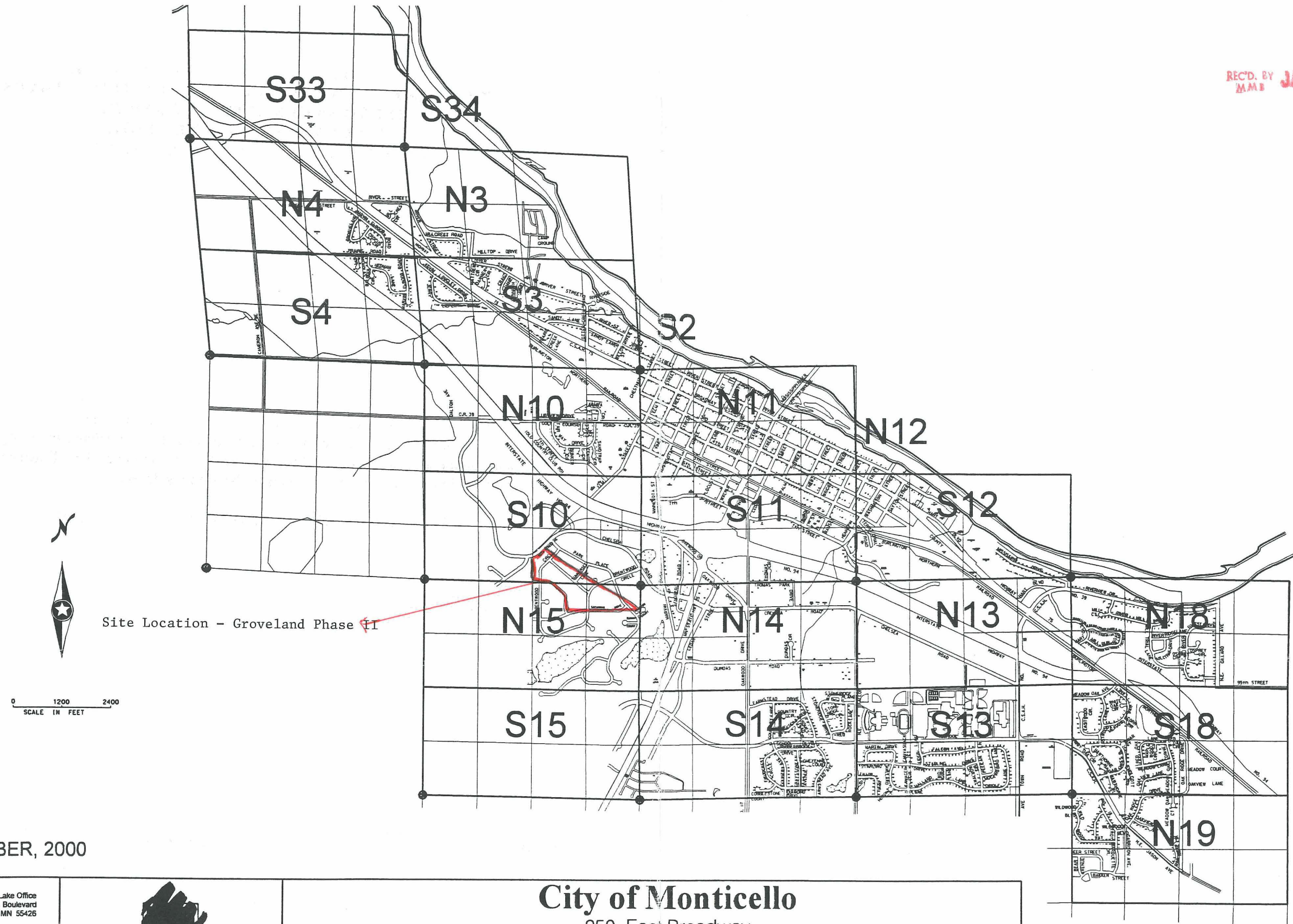
REC'D. BY
M.M. JAN 29 2001

McCOMBS FRANK ROOS ASSOCIATES,
ENGINEERS AND LAND SURVEYORS

ANNEXATION
Area #4
(59.48 Acres)

INDEX TO 1/2 SECTION ADDRESS MAPS

REC'D. BY
MMB JAN 29 2001



SEPTEMBER, 2000



350 Westwood Lake Office
8441 Wayzata Boulevard
Minneapolis, MN 55426

812-541-4800
FAX 541-1700

INFRASTRUCTURE - ENGINEERS - PLANNERS



City of Monticello

250 East Broadway
P.O. Box 1147
Monticello, MN 55362