

RESOLUTION OF THE CITY OF MANKATO APPROVING ANNEXATION OF  
PROPERTY IN ACCORDANCE WITH THE ORDERLY ANNEXATION AGREEMENT  
WITH MANKATO TOWNSHIP

WHEREAS, a petition has been submitted by the owners of property located in the Northeast Quarter of the Southwest Quarter of Section 4, Township 108 North, Range 26 West, Mankato Township requesting that said property be annexed to the City of Mankato; and

WHEREAS, the annexation of the properties is being requested in order for the existing residences to be serviced by City utilities; and

WHEREAS, there are zero (0) persons living on the subject properties

WHEREAS, the Council of the City of Mankato finds that it is in the best interest of the City to support such annexation.

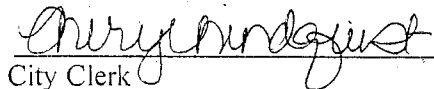
NOW, THEREFORE, BE IT RESOLVED, that the City Council of Mankato, Minnesota, hereby states that the City has no objection to the annexation of the following described property in Exhibit A and the City of Mankato hereby annexes said property per M.S. 414.0325.

Upon receipt of this resolution and an annexation petition approved by each party, the Municipal Board may review and comment, but shall, within thirty (30) days, order annexation in accordance with the terms of this joint resolution when an annexation petition is presented to the Municipal Board.

Passed this 10 day of October 2005.

  
\_\_\_\_\_  
Mayor

ATTEST:

  
\_\_\_\_\_  
City Clerk

REC'D BY  
MMB

FEB 13 2006

**Exhibit A**

The Northeast Quarter of the Southwest Quarter of Section 4, Township 108 North, Range 26 West.  
Containing 39.61 acres.

REC'D BY  
MMB

FEB 15 2006

TO: Department of Administration  
Municipal Boundary Adjustments  
300 Centennial Office Building  
658 Cedar Street  
St. Paul, MN 55155

RE: Orderly Annexation Petition: Hiniker Homes  
Proposed Annexation to the City of Mankato

Ladies and Gentlemen:

The Town Board of Mankato Township, Blue Earth County, pursuant to a resolution duly adopted by the town board 9-21, 2005 hereby states that Mankato Township has no objection to the annexation of the following described land to the City of Mankato per M.S. 414.0325 and the Joint Resolution for Orderly Annexation between the City of Mankato and Mankato Township.

The Northeast Quarter of the Southwest Quarter of Section 4, Township 108 North, Range 26 West. Containing 39.61 acres.

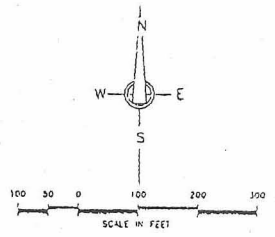
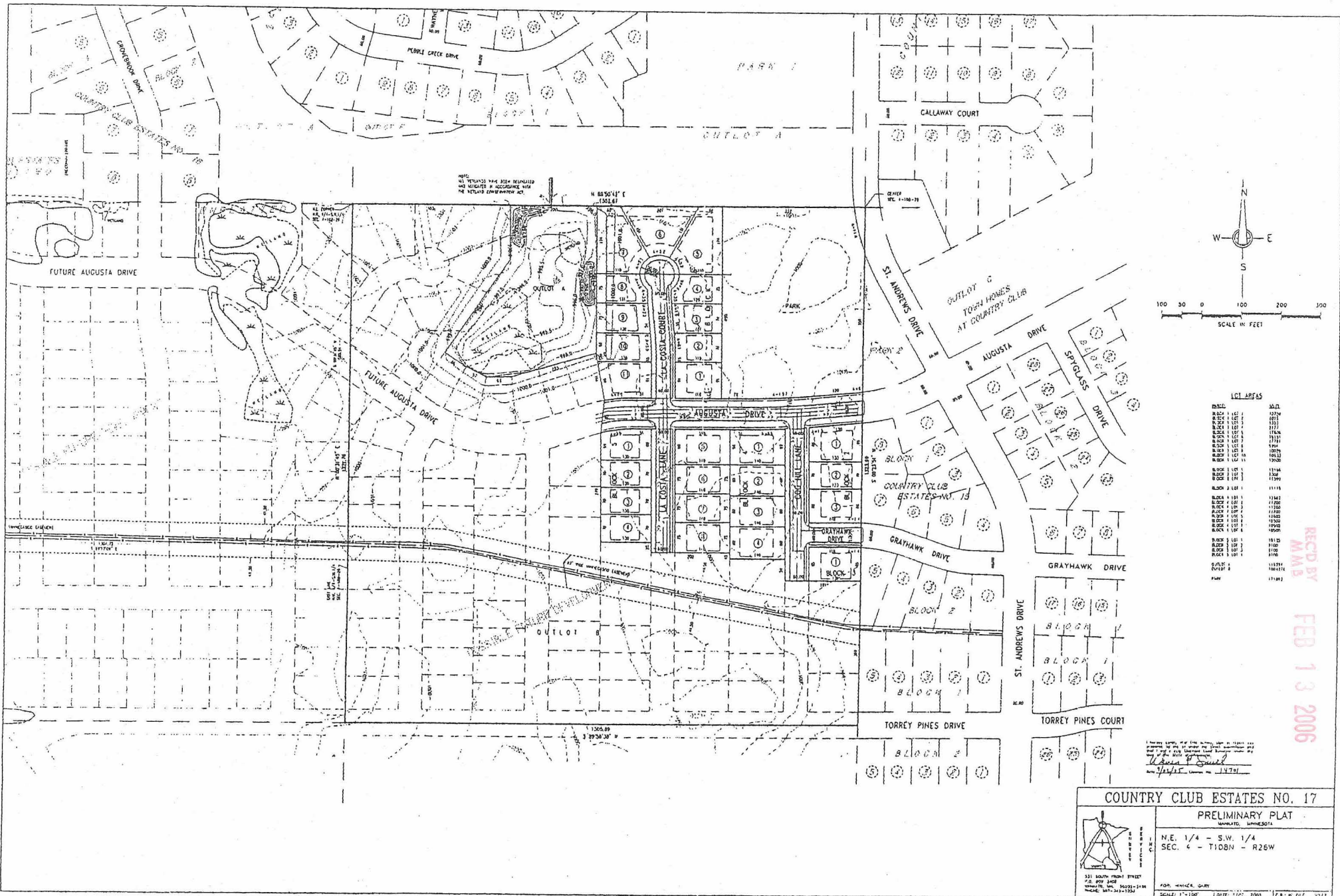
Upon receipt of this resolution and an annexation petition approved by each party, the Municipal Board may review and comment, but shall, within thirty (30) days, order annexation in accordance with the terms of this joint resolution when an annexation petition is presented to the Municipal Board.

Date 9-21-05

Signature *Daniel J. Fogel*  
Clerk







LOT AREAS

Block	Area (sq. ft.)
Block 1	10,000
Block 2	10,000
Block 3	10,000
Block 4	10,000
Block 5	10,000
Block 6	10,000
Block 7	10,000
Block 8	10,000
Block 9	10,000
Block 10	10,000
Block 11	10,000
Block 12	10,000
Block 13	10,000
Block 14	10,000
Block 15	10,000
Block 16	10,000
Block 17	10,000
Block 18	10,000
Block 19	10,000
Block 20	10,000
Block 21	10,000
Block 22	10,000
Block 23	10,000
Block 24	10,000
Block 25	10,000
Block 26	10,000
Block 27	10,000
Block 28	10,000
Block 29	10,000
Block 30	10,000
Block 31	10,000
Block 32	10,000
Block 33	10,000
Block 34	10,000
Block 35	10,000
Block 36	10,000
Block 37	10,000
Block 38	10,000
Block 39	10,000
Block 40	10,000
Block 41	10,000
Block 42	10,000
Block 43	10,000
Block 44	10,000
Block 45	10,000
Block 46	10,000
Block 47	10,000
Block 48	10,000
Block 49	10,000
Block 50	10,000
Block 51	10,000
Block 52	10,000
Block 53	10,000
Block 54	10,000
Block 55	10,000
Block 56	10,000
Block 57	10,000
Block 58	10,000
Block 59	10,000
Block 60	10,000
Block 61	10,000
Block 62	10,000
Block 63	10,000
Block 64	10,000
Block 65	10,000
Block 66	10,000
Block 67	10,000
Block 68	10,000
Block 69	10,000
Block 70	10,000
Block 71	10,000
Block 72	10,000
Block 73	10,000
Block 74	10,000
Block 75	10,000
Block 76	10,000
Block 77	10,000
Block 78	10,000
Block 79	10,000
Block 80	10,000
Block 81	10,000
Block 82	10,000
Block 83	10,000
Block 84	10,000
Block 85	10,000
Block 86	10,000
Block 87	10,000
Block 88	10,000
Block 89	10,000
Block 90	10,000
Block 91	10,000
Block 92	10,000
Block 93	10,000
Block 94	10,000
Block 95	10,000
Block 96	10,000
Block 97	10,000
Block 98	10,000
Block 99	10,000
Block 100	10,000

REC'D BY  
MMB  
FEB 13 2006

**COUNTRY CLUB ESTATES NO. 17**

**PRELIMINARY PLAT**

MAPLETON, MINNESOTA

N.E. 1/4 - S.W. 1/4  
SEC. 4 - T108N - R26W

331 SOUTH FRONT STREET  
ST. PAUL, MN 55102  
PHONE: 612-222-1234

FOR: HENRIK, GARY  
SCALE: 1"=100' DATE: 1/17/06 P.L.N. FILE: 1312