

**IN THE MATTER OF THE ORDERLY ANNEXATION BETWEEN  
THE CITY OF BABBITT AND ST. LOUIS COUNTY  
PURSUANT TO MINN. STAT. § 414.0325**

*WHEREAS, a request from all of the property owners of the area proposed for designation and immediate annexation was received.*

**WHEREAS,** the City of Babbitt and St. Louis County jointly agree to designate and request the immediate annexation of the following described land located within St. Louis County to the City of Babbitt, County of St. Louis, Minnesota;

*Parcel ID/# 625-0030-00220*

*Lot Twenty-two (22) and Lot Twenty-eight (28), NORTH BABBITT, according  
To the original plat thereof on file and of record in the office of the  
County Recorder in and for St. Louis County, Minnesota*

*EXCEPT minerals and mineral rights, if any;  
SUBJECT TO easements, conditions and restrictions of record.*

and

**WHEREAS,** the City of Babbitt and St. Louis County are in agreement as to the orderly annexation of the unincorporated land described; and

**WHEREAS,** Minn. Stat. § 414.0325 provides a procedure whereby the City of Babbitt and St. Louis County may agree on a process of orderly annexation of a designated area; and

**WHEREAS,** the City of Babbitt and St. Louis County have agreed to all the terms and conditions for the annexation of the above-described lands; and the signatories hereto agree that no alteration of the designated area is appropriate and no consideration by the Chief Administrative Law Judge is necessary. The Chief Administrative Law Judge may review and comment, but shall within thirty (30) days, order the annexation in accordance with the terms of the resolution.

**NOW, THEREFORE, BE IT RESOLVED,** jointly by the City Council of the City of Babbitt and the Board of County Commissioners as follows:

1. **(Property.)** That the land described above is subject to orderly annexation pursuant to Minn. Stat. § 414.0325, and that the parties hereto designate the area for orderly annexation; and agree that the land be immediately annexed.

2. **(Acreage/Population/Usage.)** That the orderly annexation area consists of 1.01 acres, the population of the City of Babbitt is 1,397, and the land use type is commercial.

3. **(Jurisdiction.)** That St. Louis County and the City of Babbitt, by submission of this joint resolution to the Municipal Boundary Adjustment Unit of the Office of Administrative Hearings, confers jurisdiction upon the Chief Administrative Law Judge so as to accomplish said orderly annexation in accordance with the terms of this resolution.

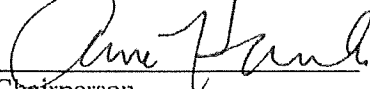
5. **(Tax Rate Step Up).** Minn. Stat. § 414.035 (1 – 6 years).

*The tax capacity rate applicable to the property after annexation shall be increased in substantially equal proportions over a period of 6 years to equality with the tax rate of property already within the city.*


6. **(Review and Comment).** The City of Babbitt and St. Louis County agree that upon receipt of this resolution, passed and adopted by each party, the Chief Administrative Law Judge may review and comment, but shall within thirty (30) days, order the annexation in accordance with the terms of the resolution.

Adopted by affirmative vote of all the members of the Board of St. Louis County Commissioners this 6<sup>th</sup> day of May 2025.

ST. LOUIS COUNTY

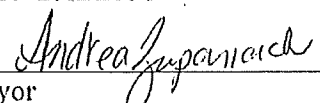
By:   
Chairperson  
Board of Commissioners

ATTEST:

By:   
County Clerk

Adopted by affirmative vote of the City Council of Babbitt this 4th day of March, 2025.

CITY OF BABBITT

By:   
Mayor

ATTEST:

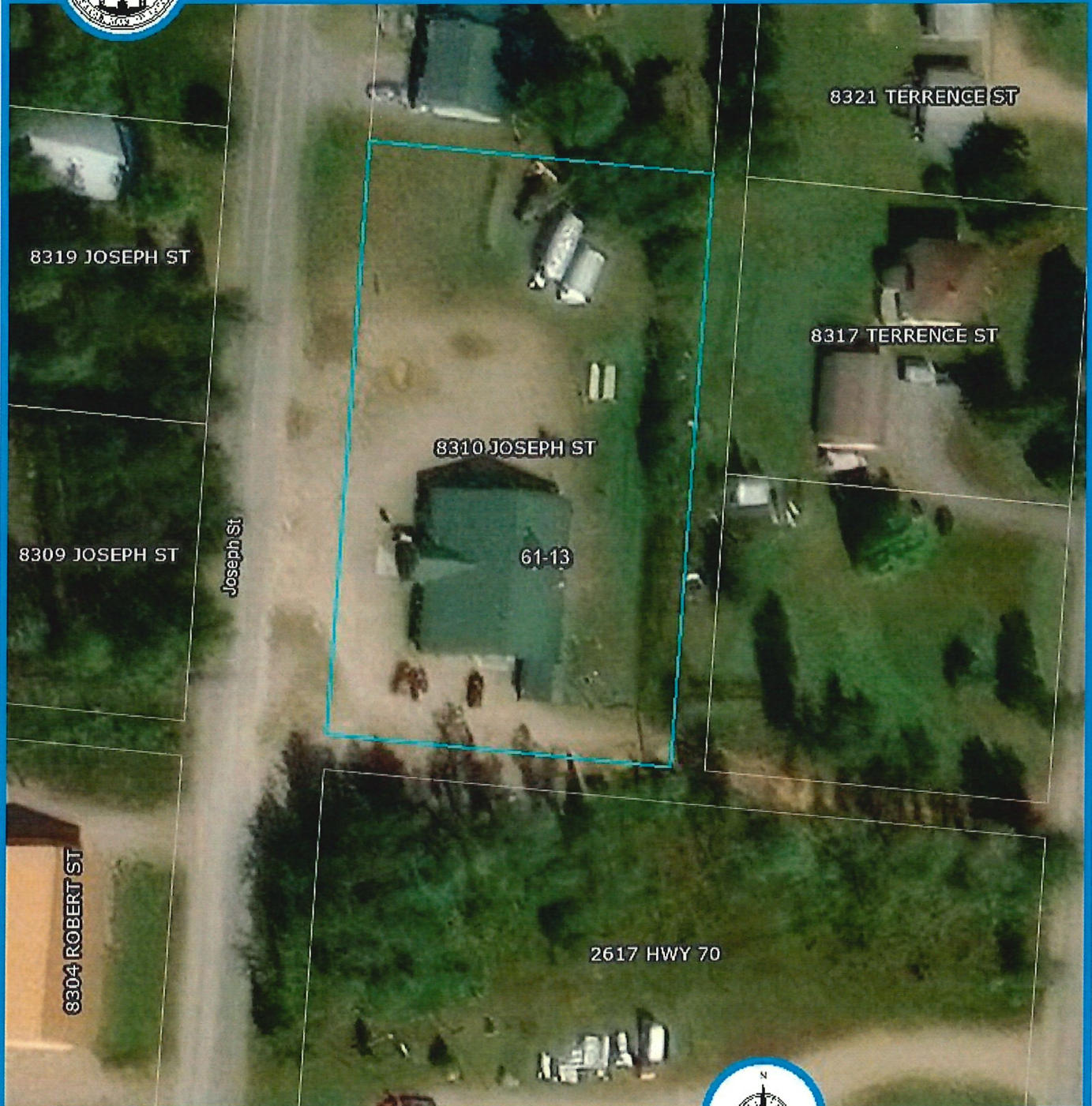
By:   
City Clerk-Treasurer

Approved this 7<sup>th</sup> day of March 2025



# County Land Explorer

St. Louis County, Minnesota



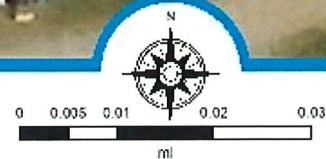
Hide Away Bar & Lounge

Parcel ID # 625-0030-00220

unorganized 6113

North Babbitt Lot 22 1/2 Lot 28

Map created using County Land Explorer  
[www.stlouiscountymn.gov/explorer](http://www.stlouiscountymn.gov/explorer)



County Land Explorer

St. Louis County

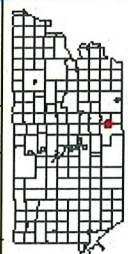
[www.stlouiscountymn.gov/explorer](http://www.stlouiscountymn.gov/explorer)

Minnesota

#### Disclaimer

This is a compilation of records as they appear in the Saint Louis County Offices affecting the area shown. This drawing is to be used only for reference purposes and the County is not responsible for any inaccuracies herein.

© Copyright St. Louis County Minnesota | All Rights Reserved Printed: 3/7/2025

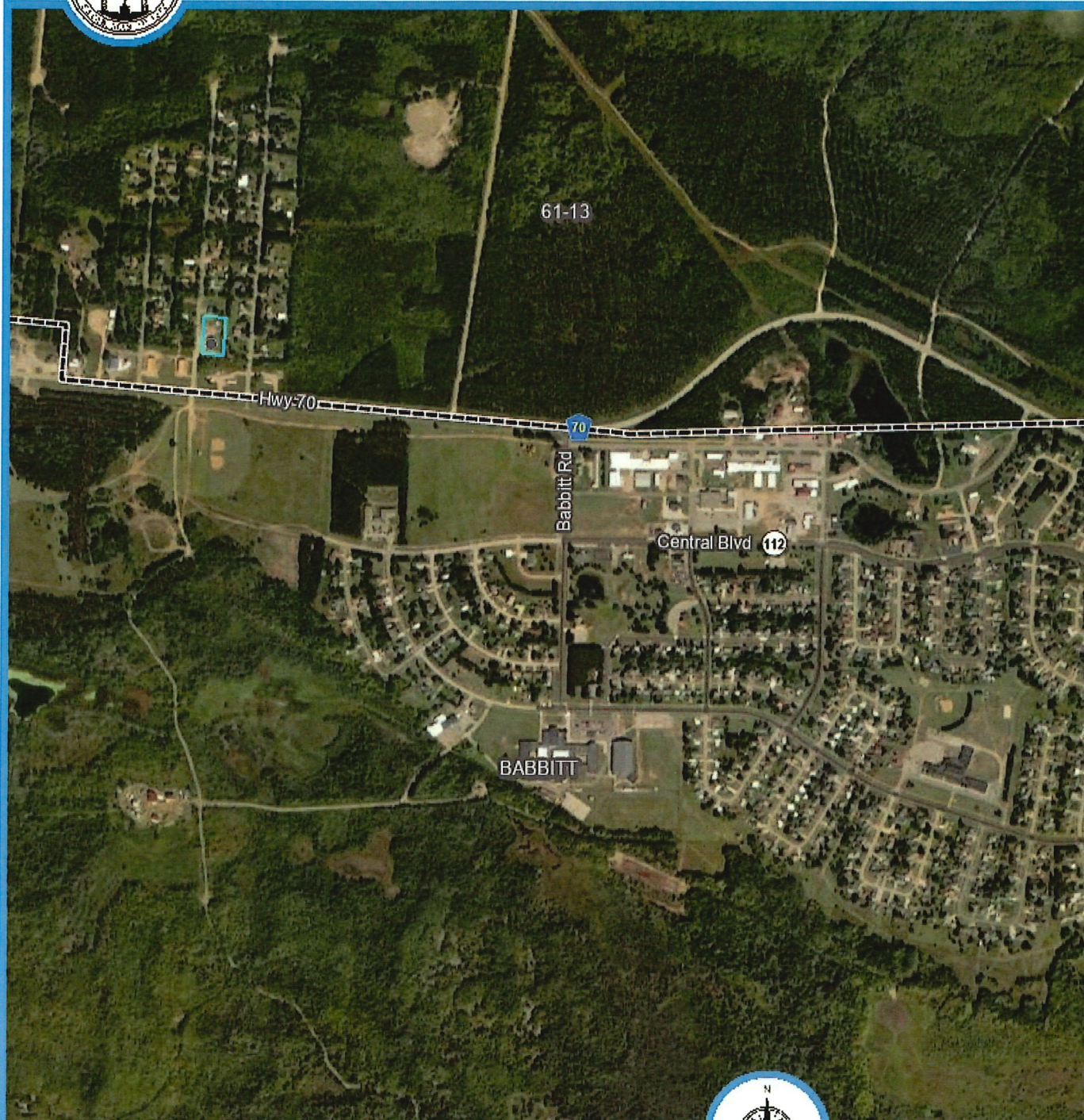






# County Land Explorer

St. Louis County, Minnesota



Title...



County Land Explorer

St. Louis County

[www.stlouiscountymn.gov/explorer](http://www.stlouiscountymn.gov/explorer)

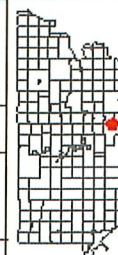
Minnesota

#### Disclaimer

This is a compilation of records as they appear in the Saint Louis County Offices affecting the area shown. This drawing is to be used only for reference purposes and the County is not responsible for any inaccuracies herein.

© Copyright St. Louis County Minnesota | All Rights Reserved Printed: 5/15/2025

Map created using County Land Explorer  
[www.stlouiscountymn.gov/explorer](http://www.stlouiscountymn.gov/explorer)

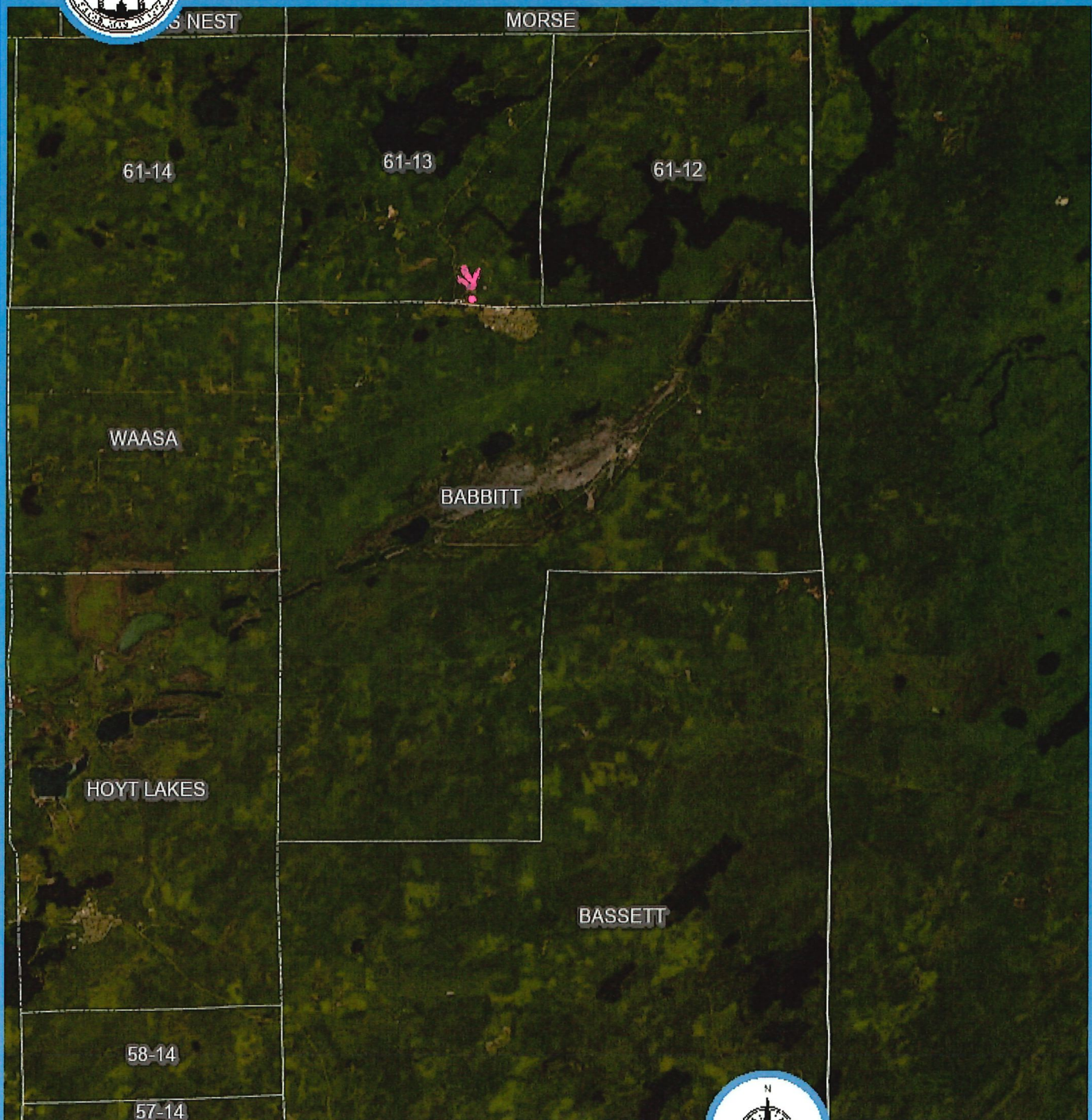






# County Land Explorer

St. Louis County, Minnesota



Title...



County Land Explorer

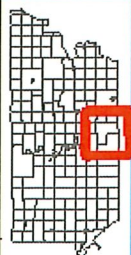
St. Louis County [www.stlouiscountymn.gov/explorer](http://www.stlouiscountymn.gov/explorer) Minnesota

#### Disclaimer

This is a compilation of records as they appear in the Saint Louis County Offices affecting the area shown. This drawing is to be used only for reference purposes and the County is not responsible for any inaccuracies herein.

© Copyright St. Louis County Minnesota | All Rights Reserved Printed: 5/15/2025

Map created using County Land Explorer  
[www.stlouiscountymn.gov/explorer](http://www.stlouiscountymn.gov/explorer)







# County Land Explorer

St. Louis County, Minnesota



Title...



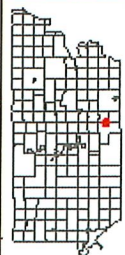
County Land Explorer

St. Louis County [www.stlouiscountymn.gov/explorer](http://www.stlouiscountymn.gov/explorer) Minnesota

#### Disclaimer

This is a compilation of records as they appear in the Saint Louis County Offices affecting the area shown. This drawing is to be used only for reference purposes and the County is not responsible for any inaccuracies herein

© Copyright St. Louis County Minnesota | All Rights Reserved Printed: 5/15/2025



Map created using County Land Explorer  
[www.stlouiscountymn.gov/explorer](http://www.stlouiscountymn.gov/explorer)