

REC'D. BY OCT 22 1997
M/M/B

RESOLUTION NO. 97-36

A RESOLUTION ANNEXING RAY-AL ACRES
TO THE CITY OF SAUK RAPIDS

WHEREAS, the Freihammer Family Limited Partnership has requested annexation of Lots 1 thru 8, Block 1, Ray-Al Acres, and

WHEREAS, a public hearing was held on this date at which time all persons desiring to be heard were given an opportunity, and

WHEREAS, the Sauk Rapids Joint Planning Board, and the Sauk Rapids Planning Commission have reviewed and recommended the annexation, and

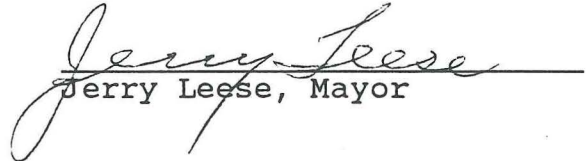
WHEREAS, the City Council, the Township Board and the property owners all agree to the annexation.

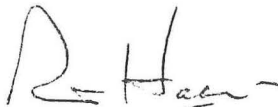
NOW THEREFORE BE IT RESOLVED BY THE SAUK RAPIDS CITY COUNCIL THAT:

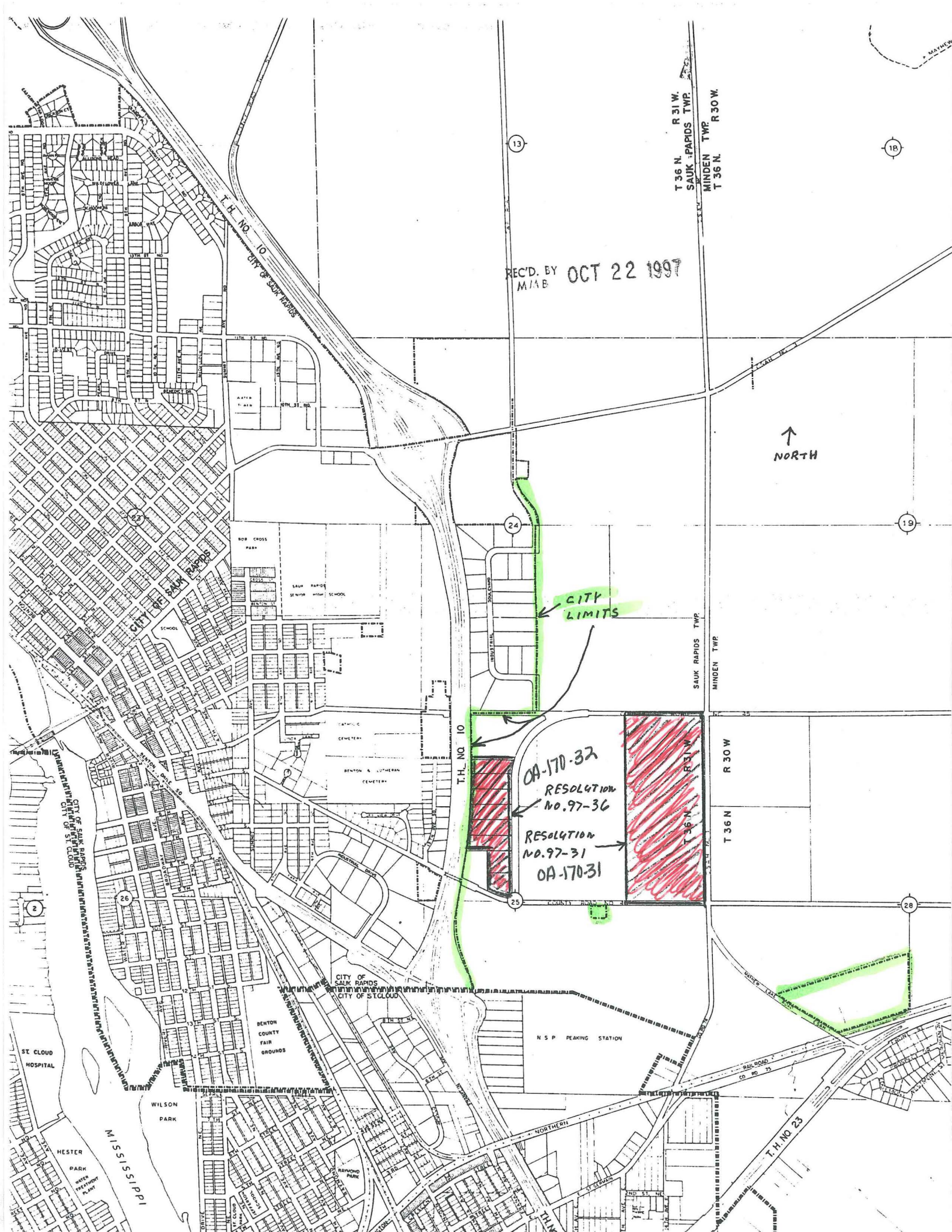
1. That Lots 1 thru 8, Block 1, Ray-Al Acres is hereby annexed.
2. That the quantity of land described above is approximately 22.57 acres.
3. In accord with MSA414.0325 and the existing Orderly Annexation Agreement between the City of Sauk Rapids and the Sauk Rapids Township, the Minnesota Municipal Board is asked to approve the annexation.

Adopted this 22nd day of September, 1997.

ATTEST:


Jerry Leese, Mayor


Robert Haarman, City Administrator-Clerk



REC'D. BY
MAB OCT 22 1997

↑
NORTH

CITY
LIMITS

OA-170-32
RESOLUTION
NO. 97-36

RESOLUTION
NO. 97-31
OA-170-31

T 36 N. R 31 W.
SAUK RAPIDS TWP
MINDEN TWP
T 36 N. R 30 W.

SAUK RAPIDS TWP
MINDEN TWP

R 30 W
T 36 N

T.H. NO 23

MISSISSIPPI

ST. CLOUD
HOSPITAL

WILSON
PARK

CITY OF
SAUK RAPIDS
CITY OF ST. CLOUD

BENTON
COUNTY
FAIR
GROUNDS

N.S.P. PEAKING STATION

NORTHERN

RAILROAD
CO. RD. 75

CITY OF SAUK RAPIDS
CITY OF ST. CLOUD

BOB CROSS
PARK

SAUK RAPIDS
SENIOR HIGH SCHOOL

CATHOLIC
CEMETERY

BENTON & LUTHERAN
CEMETERY

RAYMOND
PARK

REC'D. BY
M/18 OCT 22 1997

T36N
24 | 19
25 | 30
R31W | R30W

TWP RD.

10
HIGHWAY #10

CITY
LIMITS



RESOLUTION
NO. 97-36
OA-170-32

RESOLUTION
NO. 97-31
OA-170-31

CSAH #1

↑
NORTH

CO. RD. NO. 46