

## RESOLUTION NO. 97-31

A RESOLUTION ANNEXING THE EAST 70 ACRES OF THE  
EAST HALF OF THE NORTHEAST QUARTER OF  
SECTION 25, T36N, R31W LESS HIGHWAY RIGHT OF WAY

WHEREAS, Duane Lunemann has requested the annexation of the East 70 acres of the East Half of the Northeast Quarter (E1/2 of NE1/4) of Section 25, Township 36 North Range 31 West, Benton County Minnesota, except 4.21 acres for highway purposes, and

WHEREAS, a public hearing was held on this date at which time all persons desiring to be heard were given an opportunity, and

WHEREAS, the Sauk Rapids Joint Planning Board, and the Sauk Rapids Planning Commission have reviewed and recommended the annexation, and

WHEREAS, the City Council, the Township Board and the property owners all agree to the annexation.

NOW THEREFORE BE IT RESOLVED BY THE SAUK RAPIDS CITY COUNCIL THAT:

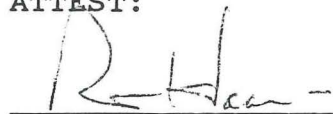
1. The following described property is hereby annexed:

The East 70 acres of the East Half of the Northeast Quarter (E1/2 of NE1/4) of Section 25, Township 36 North, Range 31 West, Benton County, Minnesota, except 4.21 acres for highway purposes.

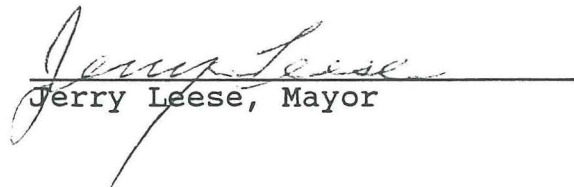
2. That the quantity of land described above is approximately 65.79 acres.
3. In accord with MSA414.0325 and the existing Orderly Annexation Agreement between the City of Sauk Rapids and Sauk Rapids Township, the Minnesota Municipal Board is asked to approve the annexation.

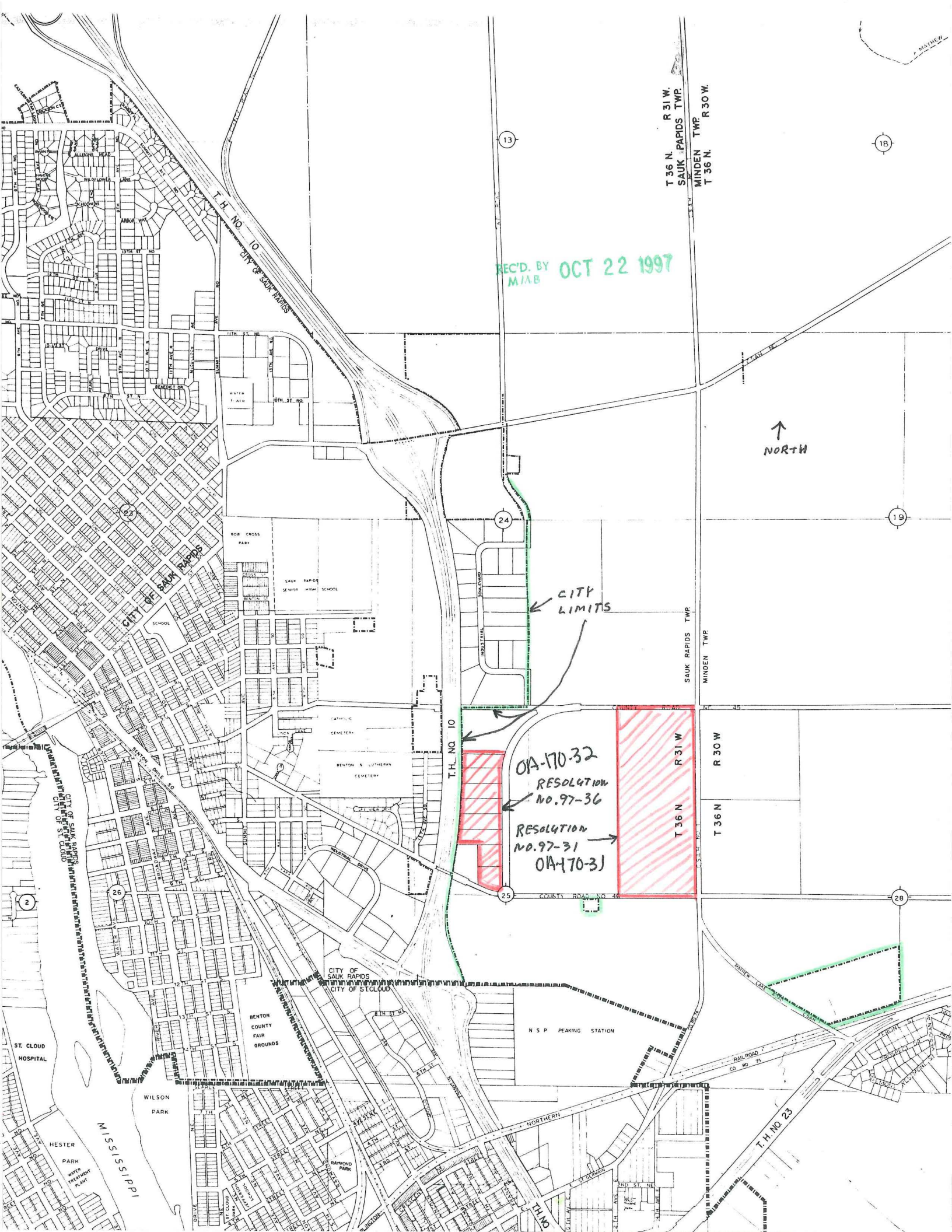
Adopted this 11th day of August 1997.

ATTEST:



Robert Haarman, City Administrator-Clerk

  
Jerry Leese, Mayor



REC'D. BY  
MIA/B OCT 22 1997

↑  
NORTH

← CITY  
LIMITS

OA-170-32  
RESOLUTION  
NO. 97-36  
RESOLUTION  
NO. 97-31  
OA-170-31

T 36 N. R 31 W.  
SAUK RAPIDS TWP.  
MINDEN TWP.  
T 36 N. R 30 W.

SAUK RAPIDS TWP.  
MINDEN TWP.

T 36 N. R 31 W.  
T 36 N. R 30 W.

N S P PEAKING STATION

T.H. NO 23

MISSISSIPPI

ST. CLOUD  
HOSPITAL

WILSON  
PARK

CITY OF  
SAUK RAPIDS  
CITY OF ST. CLOUD

BENTON  
COUNTY  
FAIR  
GROUNDS

RAYMOND  
PARK

NORTHERN



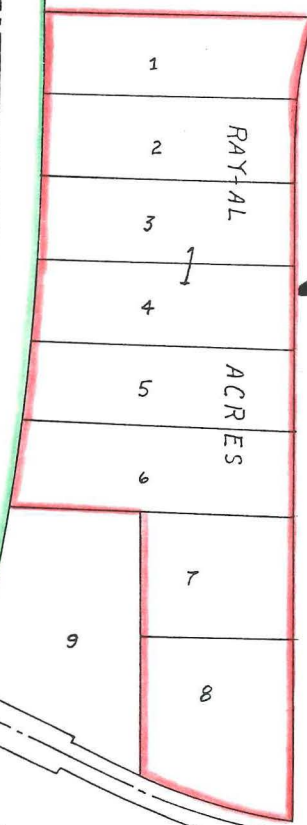
REC'D. BY  
M/LB OCT 22 1997

T 36 N	
24	19
25	30
R 31 W	R 30 W

10  
HIGHWAY # 10

TWP RD.

CITY  
LIMITS



RESOLUTION  
NO. 97-36  
OA-170-32

RESOLUTION  
NO. 97-31  
OA-170-31

C.S.A.H. # 1

↑  
NORTH

CO. RD. NO. 46

