

OA-115

APR 4 1975

A JOINT RESOLUTION
BY THE TOWNSHIP OF MISSABE MOUNTAIN
AND
THE CITY OF GILBERT
AUTHORIZING AND AGREEING TO ORDERLY ANNEXATION

WHEREAS, the City of Gilbert, Saint Louis County, Minnesota, a Municipality within the definitions set out in Section 414.011 Minnesota Statutes 1974 abuts and is contiguous to the Township of Missabe Mountain, Saint Louis County, a Municipal Corporation; with said City presently experiencing a period of growth and expansion necessitating additional area to be added to its present limits to provide for such growth, and

WHEREAS, the Township recognizes and appreciates the City's needs for additional lands, and further that an area within the Township is about to become urban or suburban in nature and that said City is capable of providing the services required by the area within a reasonable time, and

WHEREAS, said area in the Township described as follows:

All of Sections 11, 12, 13, and 14, and the North $\frac{1}{2}$ of Sections 23 and 24, and the SW $\frac{1}{4}$ of the SW $\frac{1}{4}$ of Section 23, and the NW $\frac{1}{4}$ of the SW $\frac{1}{4}$ of Section 23, all lying in Township 58N, Range 17W, of the Fourth Principal Meridian according to the United States Geological Survey,

is agreed by and between the City and the Township to be the proper subject of orderly annexation to said City.

NOW THEREFORE BE IT RESOLVED, that pursuant to the provisions of Sections 414.032 Minnesota Statutes 1974, that the herein before described area is in need of immediate annexation by said City and that the said Municipal Commission of the State of Minnesota hereby take all necessary steps and proceedings to accomplish this annexation as expeditiously as possible.

(1)

Nick Palkovich
Nick Palkovich, Chairman of the
Board, Missabe Mountain Township

John Schlote
John Schlote, Clerk
Missabe Mountain Township

SEAT.

SEAL.

Judith A. Krause
Judith A. Krause, Notary Public



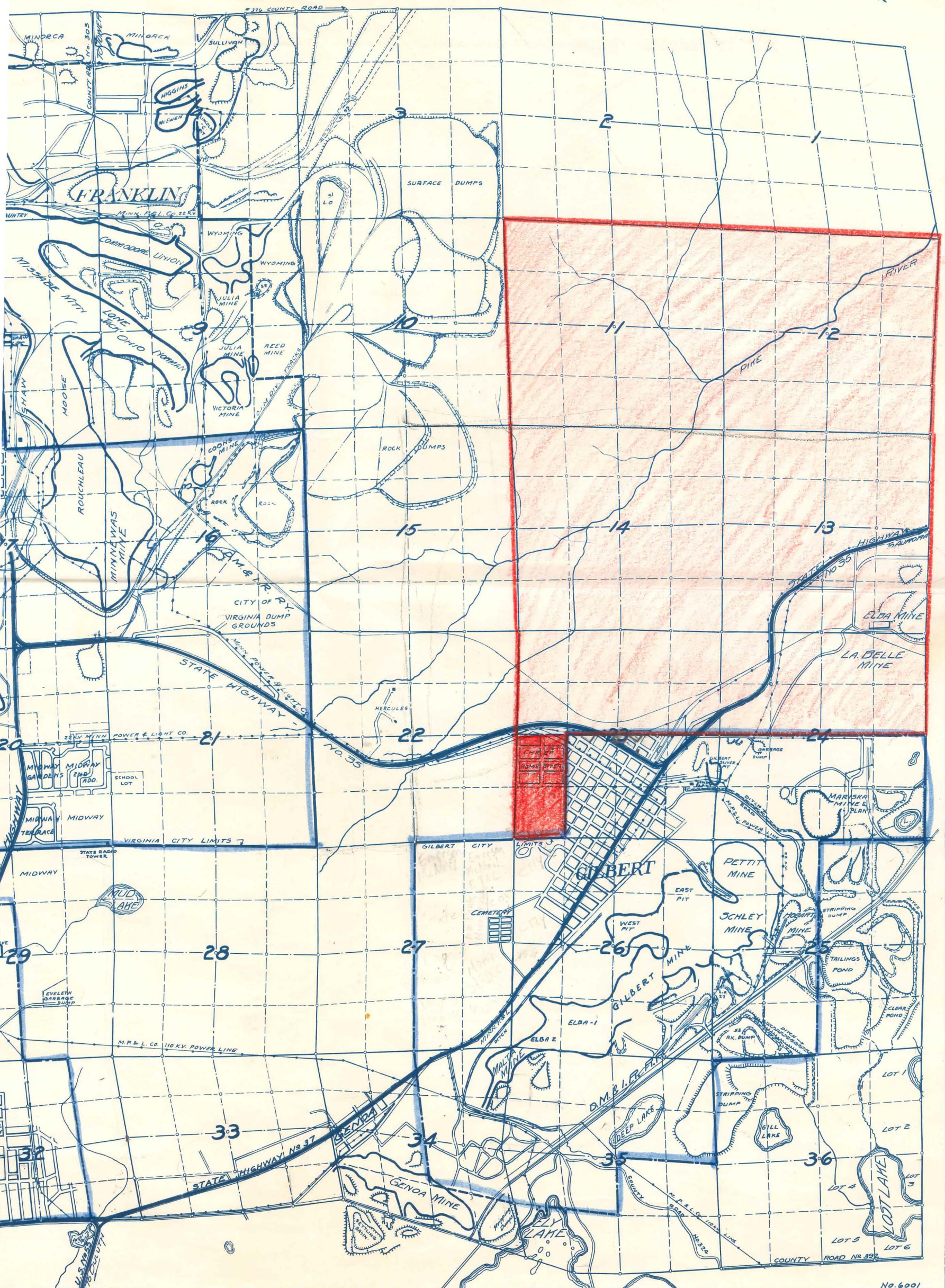
Gilbert A
57291-73



11-809

MAP OF THE TOWN OF MISSABE MTN. of R.17W. ST. LOUIS CO., MINNESOTA.

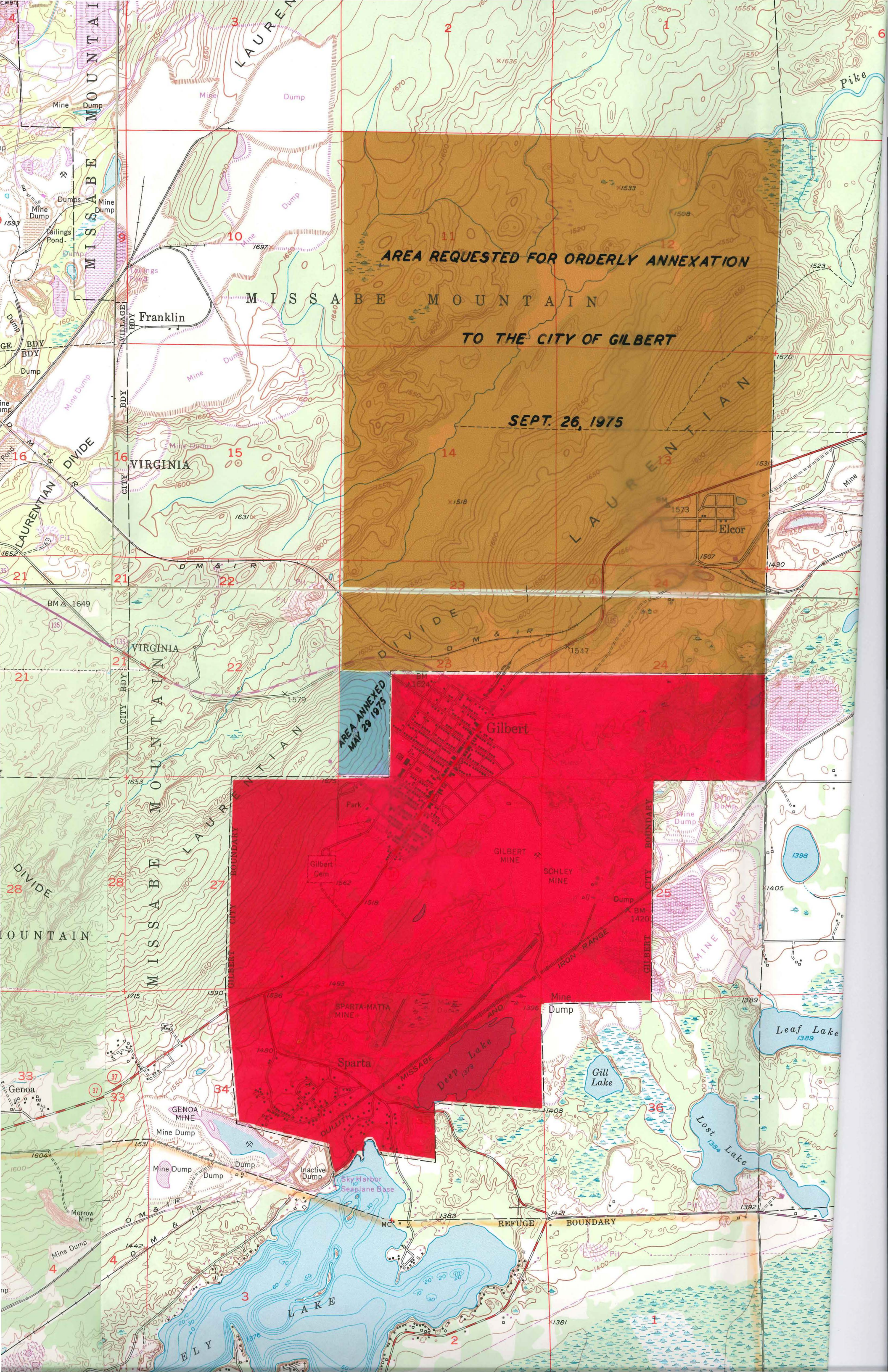
ENGINEERING DEPT.
ST. LOUIS, MINN.
JAN. 1, 1959
No. 6001

Scale
1/4 1/2 3/4 1 MILE



-  - Area to be annexed by ordinance
-  - Area for annexation agreed to by resolution

No. 6001



AREA REQUESTED FOR ORDERLY ANNEXATION
TO THE CITY OF GILBERT

SEPT. 26, 1975

AREA ANNEXED
MAY 29 1975

Gilbert

Sparta

DULUTH

SKY HARBOR

SEAPLANE BASE

INACTIVE DUMP

DUMP

DUMP

DUMP

DUMP

DUMP

DUMP

DUMP

DUMP

DUMP

DUMP

DUMP

DUMP

DUMP

DUMP

DUMP

DUMP

DUMP

DUMP

DUMP

DUMP

DUMP

DUMP

DUMP

DUMP

DUMP

DUMP

DUMP

DUMP

DUMP

DUMP

DUMP

DUMP

DUMP

DUMP

DUMP

DUMP

DUMP

DUMP

DUMP

DUMP

DUMP

DUMP

DUMP

DUMP

DUMP

DUMP

DUMP

DUMP

DUMP

DUMP

DUMP

DUMP

DUMP

DUMP

DUMP

DUMP

DUMP

DUMP

DUMP

DUMP

DUMP

DUMP

DUMP

DUMP

DUMP

DUMP

DUMP

DUMP

DUMP

DUMP

DUMP

DUMP

DUMP

DUMP

DUMP

DUMP

DUMP

DUMP

DUMP

DUMP

DUMP

DUMP

DUMP

DUMP

DUMP

DUMP

DUMP

DUMP

DUMP

DUMP

DUMP

DUMP

DUMP

DUMP

DUMP

DUMP

DUMP

DUMP

DUMP

DUMP

DUMP

DUMP

DUMP

DUMP

DUMP

DUMP

DUMP

DUMP

DUMP

DUMP

DUMP

DUMP

DUMP

DUMP

DUMP

DUMP

DUMP

DUMP

DUMP

DUMP

DUMP

DUMP

DUMP

DUMP

DUMP

DUMP

DUMP

DUMP

DUMP

DUMP

DUMP

DUMP

DUMP

DUMP

DUMP

DUMP

DUMP

DUMP

DUMP

DUMP

DUMP

DUMP

DUMP

DUMP

DUMP

DUMP

DUMP

DUMP

DUMP

DUMP

DUMP

DUMP

DUMP

DUMP

DUMP

DUMP

DUMP

DUMP

DUMP

DUMP

DUMP

DUMP

DUMP

DUMP

DUMP

DUMP

DUMP

DUMP

DUMP

DUMP

DUMP

DUMP

DUMP

DUMP

DUMP

DUMP

DUMP

DUMP

DUMP

DUMP

DUMP

DUMP

DUMP

DUMP

DUMP

DUMP

DUMP

DUMP

DUMP

DUMP

DUMP

DUMP

DUMP

DUMP

DUMP

DUMP

DUMP

DUMP

DUMP

DUMP

DUMP

DUMP

DUMP

DUMP

DUMP

DUMP

DUMP

DUMP

DUMP

DUMP

DUMP

DUMP

DUMP

DUMP

DUMP

DUMP

DUMP

DUMP

DUMP

DUMP

DUMP

DUMP

DUMP

DUMP

DUMP

DUMP

DUMP

DUMP

DUMP

DUMP

DUMP

DUMP

DUMP

DUMP

DUMP

DUMP

DUMP

DUMP

DUMP

DUMP

DUMP

DUMP

DUMP

DUMP

DUMP

DUMP

DUMP

DUMP

DUMP

DUMP

DUMP

DUMP

DUMP

DUMP

DUMP

DUMP

DUMP

DUMP

DUMP

DUMP

DUMP

DUMP

DUMP

DUMP

DUMP

DUMP

DUMP

DUMP

DUMP

DUMP

DUMP

DUMP

DUMP

DUMP

DUMP

DUMP

DUMP

DUMP

DUMP

DUMP

DUMP

DUMP

DUMP

DUMP

DUMP

DUMP

DUMP

DUMP

DUMP

DUMP

DUMP

DUMP

DUMP

DUMP

DUMP

DUMP

DUMP

DUMP

DUMP

DUMP

DUMP

DUMP

DUMP

DUMP

DUMP

DUMP

DUMP

DUMP

DUMP

DUMP

DUMP

DUMP

DUMP

DUMP

DUMP

DUMP

DUMP

DUMP

DUMP

DUMP

DUMP

DUMP

DUMP

DUMP

DUMP

DUMP

</