

M.S. 414.0325  
AMENDMENT TO THE JOINT  
RESOLUTION FOR ORDERLY ANNEXATION  
BETWEEN THE TOWN OF BUFFALO  
AND THE CITY OF BUFFALO

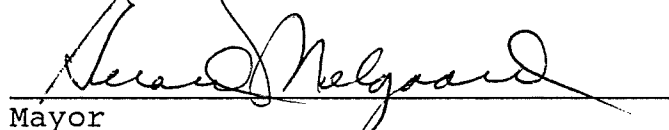
The Township of Buffalo and the City of Buffalo hereby jointly agree that the area designated for orderly annexation in the Joint Resolution Between the Town of Buffalo and the City of Buffalo Designating an Area for Orderly Annexation dated July 17, 1974 be amended to include the following:

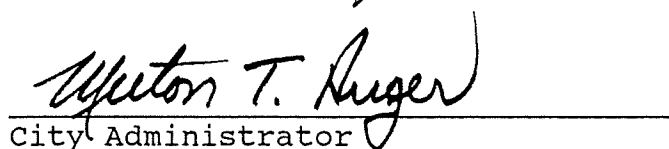
Both the Town and City agree that no alteration of the stated boundaries of this agreement is appropriate. Furthermore, both parties agree that no consideration by the Board is necessary. Upon receipt of this resolution, the Municipal Board may review and comment, but shall, within 30 days, order the annexation of the following-described property in accordance with the terms of the joint resolution.

See Attached Legal Description as Exhibit A

Approved by the City of Buffalo this 3rd Day of February, 1992.

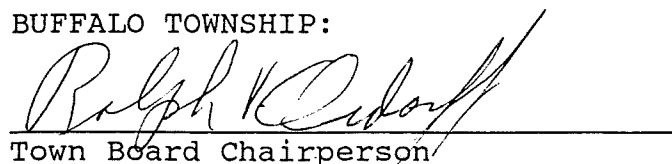
CITY OF BUFFALO:

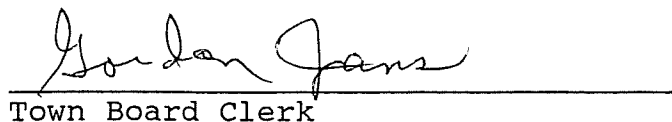
  
Mayor

  
City Administrator

Approved by the Town of Buffalo this 6<sup>th</sup> day of April, 1992.

BUFFALO TOWNSHIP:

  
Town Board Chairperson

  
Town Board Clerk

That portion of the Southwest 1/4 of the Northwest 1/4 of Section 21, lying east of and including Drainage Easement #4 of Section 21, Township 120, Range 25, Wright County, Minnesota.

Description: (Drainage Easement No. 4)

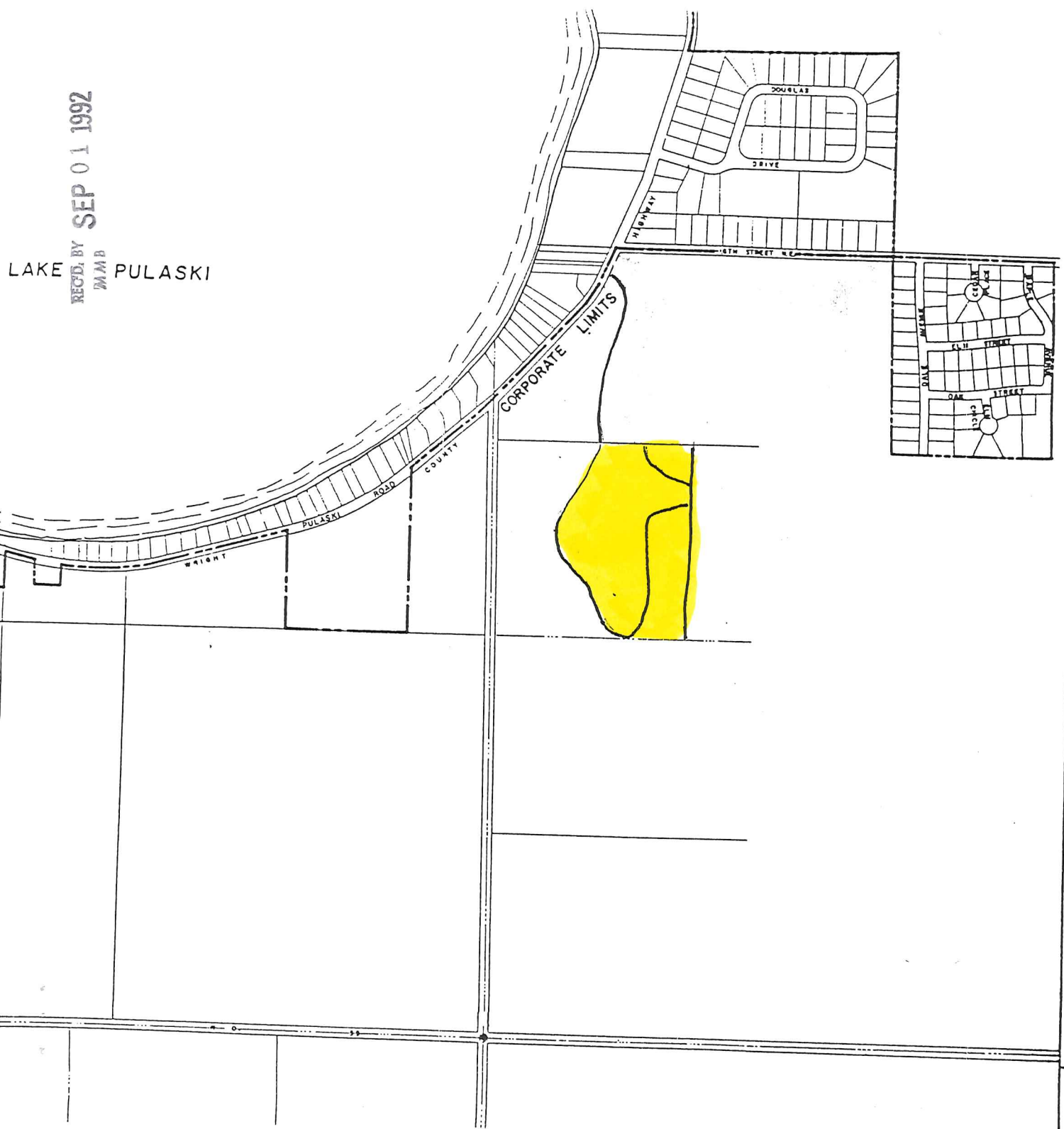
That part of the SW 1/4 of the NW 1/4, Section 21, Township 120 North, Range 25 West, Wright County, Minnesota described as follows: Commencing at the northeast corner of the Northwest Quarter; thence North 88 degrees 29 minutes 44 seconds West, assumed bearing, along the north line of said Northwest Quarter and said Government Lot 1 a distance of 1514.61 feet to the point of beginning of the following described parcel;

thence South 30 Degrees 08 Minutes 36 Seconds East a distance of 138.94 feet;  
thence South 06 Degrees 44 Minutes 27 Seconds West a distance of 154.78 feet;  
thence South 13 Degrees 16 Minutes 18 Seconds West a distance of 267.28 feet;  
thence South 06 Degrees 27 Minutes 56 Seconds West a distance of 192.60 feet;  
thence South 34 Degrees 56 Minutes 18 Seconds East a distance of 126.07 feet;  
thence South 54 Degrees 02 Minutes 16 Seconds West a distance of 66.46 feet;  
thence South 11 Degrees 06 Minutes 34 Seconds East a distance of 183.93 feet;  
thence South 10 Degrees 15 Minutes 46 Seconds West a distance of 110.82 feet;  
thence South 45 Degrees 36 Minutes 46 Seconds West a distance of 94.66 feet;  
thence South 17 Degrees 20 Minutes 43 Seconds East a distance of 136.44 feet;  
thence South 72 Degrees 55 Minutes 16 Seconds East a distance of 64.93 feet;  
thence South 61 Degrees 26 Minutes 39 Seconds East a distance of 124.79 feet;  
thence South 71 Degrees 14 Minutes 51 Seconds East a distance of 62.96 feet;  
thence South 00 Degrees 15 Minutes 48 Seconds West a distance of 170.19 feet;  
thence North 89 Degrees 46 Minutes 15 Seconds West a distance of 183.66 feet;  
thence North 80 Degrees 12 Minutes 45 Seconds West a distance of 123.02 feet;  
thence South 21 Degrees 26 Minutes 19 Seconds West a distance of 178.38 feet;  
thence South 38 Degrees 15 Minutes 39 Seconds East a distance of 170.21 feet;  
thence South 02 Degrees 36 Minutes 54 Seconds East a distance of 368.27 feet;  
thence South 23 Degrees 08 Minutes 21 Seconds East a distance of 203.03 feet;  
thence South 08 Degrees 13 Minutes 50 Seconds East a distance of 153.42 feet;  
thence North 88 Degrees 47 Minutes 22 Seconds West a distance of 130.80 feet;  
thence North 66 Degrees 46 Minutes 14 Seconds West a distance of 189.27 feet;  
thence North 37 Degrees 55 Minutes 46 Seconds West a distance of 275.32 feet;  
thence North 24 Degrees 35 Minutes 41 Seconds West a distance of 162.24 feet;  
thence North 52 Degrees 55 Minutes 15 Seconds West a distance of 310.44 feet;  
thence North 16 Degrees 34 Minutes 06 Seconds West a distance of 138.47 feet;  
thence North 20 Degrees 52 Minutes 01 Seconds East a distance of 186.62 feet;  
thence North 29 Degrees 58 Minutes 50 Seconds East a distance of 415.22 feet;  
thence North 62 Degrees 14 Minutes 47 Seconds West a distance of 44.35 feet;  
thence North 02 Degrees 13 Minutes 13 Seconds West a distance of 67.22 feet;  
thence North 12 Degrees 44 Minutes 26 Seconds East a distance of 245.49 feet;  
thence North 04 Degrees 54 Minutes 14 Seconds East a distance of 138.57 feet;  
thence North 12 Degrees 45 Minutes 23 Seconds East a distance of 241.84 feet;  
thence North 26 Degrees 32 Minutes 18 Seconds East a distance of 142.55 feet;  
thence North 37 Degrees 17 Minutes 08 Seconds East a distance of 124.48 feet;  
thence North 11 Degrees 44 Minutes 56 Seconds East a distance of 76.65 feet;  
thence North 21 Degrees 37 Minutes 43 Seconds West a distance of 158.08 feet;  
thence North 19 Degrees 08 Minutes 27 Seconds East a distance of 178.30 feet to a point on the north line of said Government Lot 1; thence south 88 Degrees 29 Minutes 44 Seconds East, along said north line, 262.25 feet to the point of beginning.

REC'D, BY SEP 01 1992

MMB

LAKE PULASKI



3

4

2	--	
3	--	
4	--	
5	--	
6	--	
7	--	
8	--	
9	--	
10	--	
11	--	
12	--	F
13	--	F
14	--	E L
15	--	F
16	--	C A
17	--	E