

IN THE MATTER OF THE JOINT
RESOLUTION OF THE TOWNSHIP OF
GENEVA AND THE CITY OF GENEVA
DESIGNATING AN UNINCORPORATED
AREA AS IN NEED OF ORDERLY
ANNEXATION PURSUANT TO MINNESOTA
STATUTES § 414.0325

REC'D BY
MMB

MAR 17 2004

JOINT RESOLUTION FOR ORDERLY ANNEXATION

The Township of Geneva and the City of Geneva hereby jointly agree to the following:

1. That the following area in Geneva Township is subject to orderly annexation pursuant to Minnesota Statutes § 414.0325, and the parties hereby designate this area for orderly annexation:

Commencing at the southeast corner of Block 100 in the plat of the City of Geneva, as the same is platted and recorded in the office of the county Recorder of Freeborn County, Minnesota;

thence East a distance of 335.71 feet;

thence North a distance of 150.00 feet;

thence West a distance of 335.71 feet;

thence South a distance of 150.00 feet, to the point of beginning.

The property described above contains approximately 1.16 acres.

2. That the Township of Geneva does, upon passage of this Resolution and its adoption by the City Council of the City of Geneva, Minnesota, and upon the acceptance by the Director of the Office of Strategic and Long-Range Planning (hereinafter "Director"), confer jurisdiction upon the Director over the various provisions contained in this agreement.
3. That this certain property that abuts the City of Geneva is about to become urban or suburban in nature. Further, the City of Geneva is capable of providing services to this area within a reasonable time, and the annexation is in the best interest of the area proposed for annexation. Therefore, this property should be immediately annexed to the City of Geneva. The property is described as follows:

Commencing at the southeast corner of Block 100 in the plat of the City of Geneva, as the same is platted and recorded in the office of the county Recorder of Freeborn County, Minnesota;

thence East a distance of 335.71 feet;

thence North a distance of 150.00 feet;

thence West a distance of 335.71 feet;

thence South a distance of 150.00 feet, to the point of beginning.

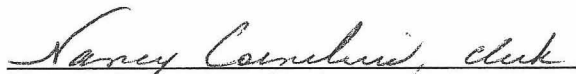
4. Both the Township of Geneva and the City of Geneva agree that no alteration of the stated boundaries of the area to be annexed is appropriate. Furthermore, each party agrees that no consideration by the Director is necessary. Upon receipt of this Resolution, passed and adopted by each party, the Director may review and comment, but shall, within 30 days, order the annexation in accordance with the terms of this Joint Resolution. It is the intent of the parties that the land described in this Joint Resolution shall be annexed to the City of Geneva as soon as possible. Therefore, the Director may immediately order said annexation following receipt and review of this Joint Resolution.

Passed and adopted by the City of Geneva, Minnesota this 13th day of January, 2004.



Ronald L. Christensen, Mayor

ATTEST:




Nancy Cornelius, Clerk

Passed and adopted by the Board of Supervisors of the Township of Geneva, Minnesota this 9 day of Feb, 2004.



Supervisor



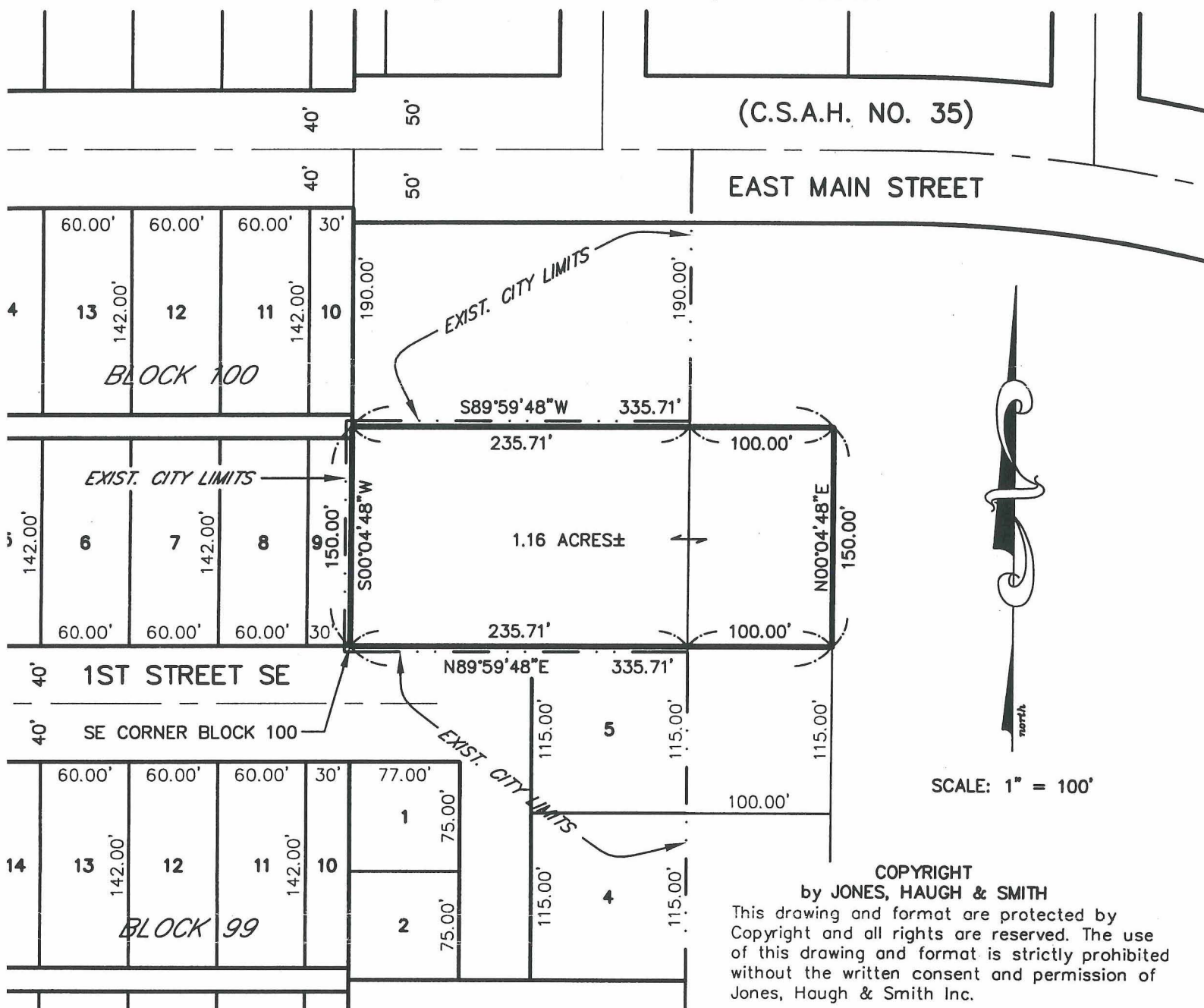
Supervisor

DRAWING OF TRACT

FOR ANNEXATION
IN SECTION 8-T104N-R20W
GENEVA, FREEBORN COUNTY, MINNESOTA

REC'D BY
MMB

MAR 17 2004

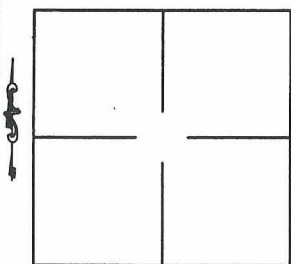


COPYRIGHT

by JONES, HAUGH & SMITH

This drawing and format are protected by Copyright and all rights are reserved. The use of this drawing and format is strictly prohibited without the written consent and permission of Jones, Haugh & Smith Inc.

LOCATION MAP



Scale: 1"=4000'

MONUMENTS

- = 5/8" x 16" iron stake monument (Capped RLS 13807)—Placed
- = Iron stake monument—Found
- ⊗ = DRILL HOLE

SURVEY FOR: CITY OF GENEVA

Date of survey: —
Revised date: —
Drawn by: ADM Survey: —
Book: — Page: —
Coord-System:—
Job No: 03-567

I hereby certify that this survey, plan, or report was prepared by me or under my direct supervision and that I am a duly Registered Land Surveyor under the laws of the State of Minnesota.

JOHN H. SCHULTE IV

Date:

Reg. No. 13807

JONES, HAUGH & SMITH INC.

Civil Engineers & Land Surveyors
Albert Lea, Minnesota