

Councilmember Ahlin introduced the following ordinance and moved for its adoption:

**ORDINANCE NO. 06-05-07- 1**

**AN ORDINANCE EXTENDING THE CORPORATE LIMITS OF THE CITY OF MCKINLEY UPON PETITION BY PRIVATE PROPERTY OWNERS REGARDING PRIVATE LANDS ABUTTING THE CITY OF MCKINLEY AND LANDS OWNED BY THE CITY OF MCKINLEY**

**WHEREAS**, the City of McKinley has received a Petition for Annexation submitted by Thomas Indihar, concerning the following land which abuts the corporate limits of the City of McKinley, a copy of which is attached hereto:

That part of the NW 1/4 of NW 1/4, lying South of the railroad right of way, Section 20, Township 58 North, Range 16 West of the Fourth Principal Meridian, according to the United States Government Survey thereof.

**WHEREAS**, it is the desire of the City of McKinley to annex said abutting land to the corporate limits of the City.

**NOW, THEREFORE**, the City Council of McKinley, Minnesota does hereby ordain:

Section 1. The City Council hereby determines and finds that the property is unincorporated, it abuts the municipality, is less than 60 acres in size, and is not presently served by public facilities. The City shall annex said land by ordinance under the terms of Minn. Stat. §414.033 subd. 2(3). The property is not included in any area that has already been designated for orderly annexation pursuant to Minn. Stat. §414.0325.

Section 2. Notice and hearing required under Minn. Stat. §414.033, subd. 2b have been complied with.

Section 3. The corporate limits of the City of McKinley are hereby extended to include the following described property and the same is hereby annexed to and included within the City of McKinley as if the property had been part thereof:

That part of the NW 1/4 of NW 1/4, lying South of the railroad right of way, Section 20, Township 58 North, Range 16 West of the Fourth Principal Meridian, according to the United States Government Survey thereof:

Section 4. The City Attorney is directed to file certified copies of this ordinance with the Director of Municipal Boundary Adjustments, Biwabik Township, the St. Louis County Auditor and the Minnesota Secretary of State.

Section 5. Under the terms of Minn. Stat. §414.033, subd. 7, this ordinance takes effect on the date the ordinance is approved by the Director of Municipal Boundary Adjustments.

Vote for 4

Vote Against 0

  
Mayor - Paul Lautiga

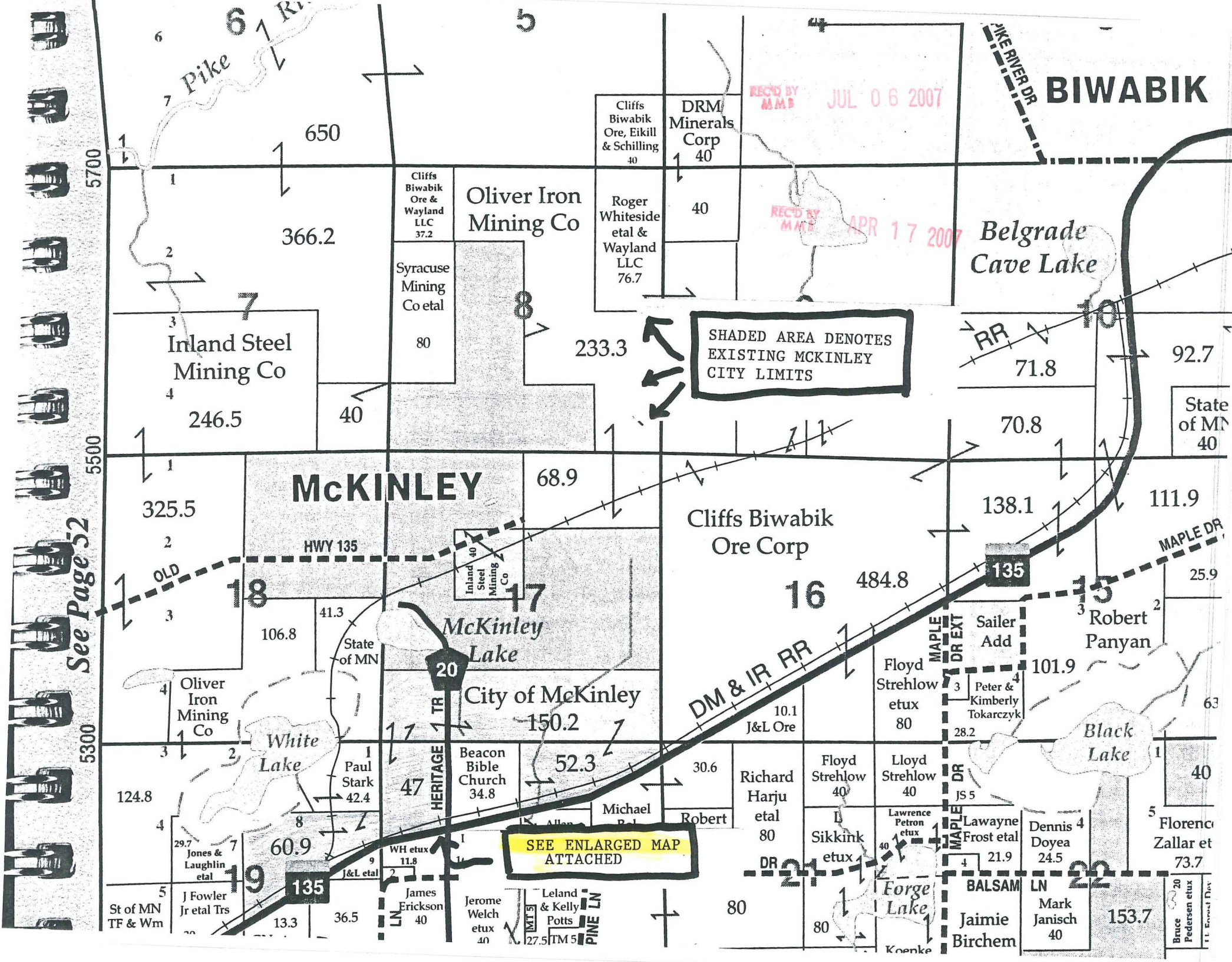
Attest:   
City Clerk  
Michelle Claviter-Tveit

Adopted: June 05, 2007

I hereby certify that the above Ordinance No. 2007-1 was adopted by the City Council for the City of McKinley on June 05, 2007.

  
City Clerk





Pike 6

BIWABIK

REC'D BY MMB JUL 06 2007

REC'D BY MMB APR 17 2007

SHADED AREA DENOTES  
EXISTING MCKINLEY  
CITY LIMITS

SEE ENLARGED MAP  
ATTACHED

See Page 52

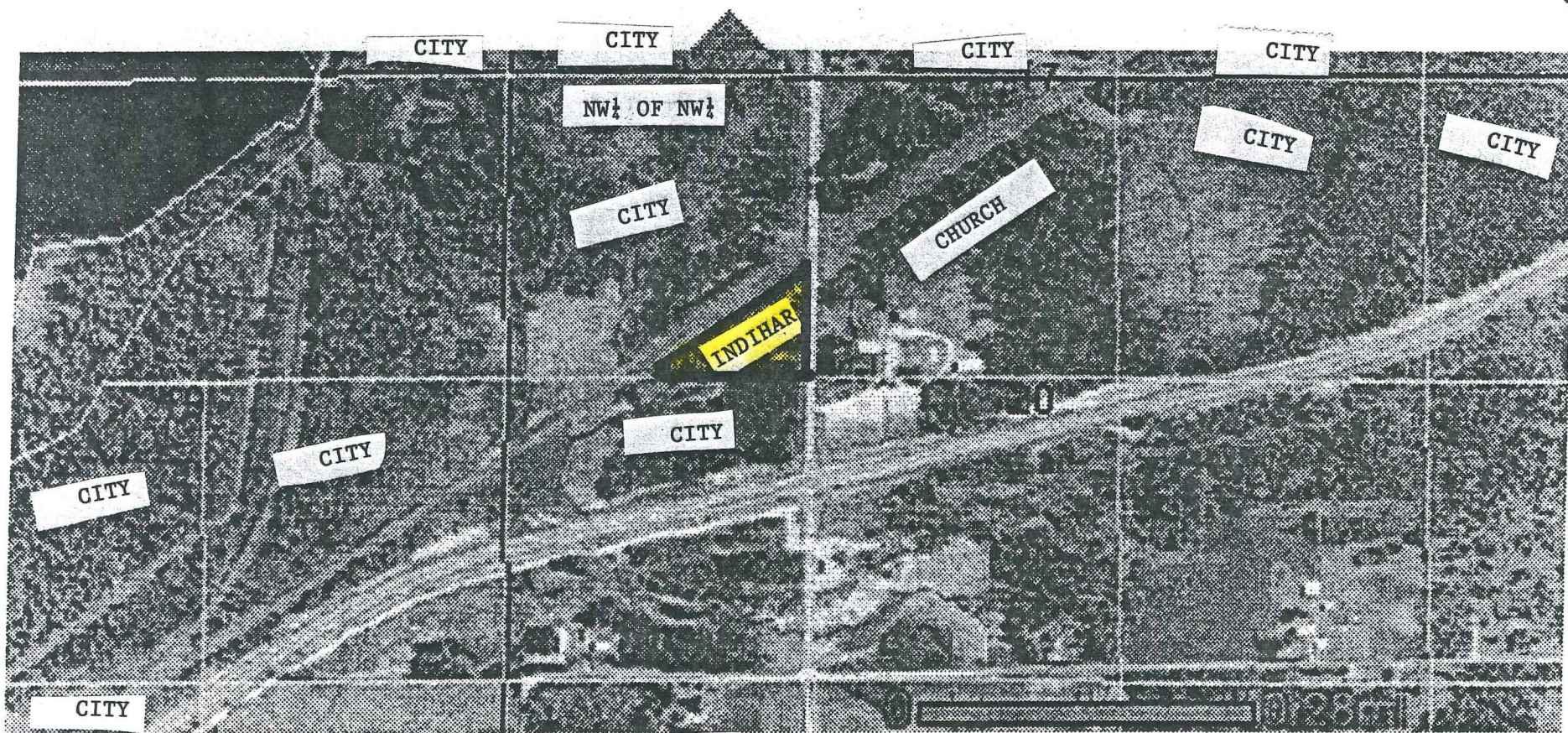


# County 1991 Aerial Photography

is County Land Department

## 2003 Aerial

More Data



SECTION 19,  
T 58, R 16

SECTION 20  
T 58, R 16

RECD BY  
MAB  
APR 17 2007  
RECD BY  
MAB  
JUL 06 2007

Old  
photo