

ORDINANCE NO. 297

AN ORDINANCE EXTENDING THE CORPORATE LIMITS
OF THE CITY OF DETROIT LAKES, MINNESOTA TO INCLUDE CERTAIN
UNINCORPORATED TERRITORY COMPLETELY SURROUNDED
BY LAND WITHIN THE CITY LIMITS
(Cheryl Avenue South of Snappy Park)

WHEREAS, Certain territory described below is not presently included within the corporate limits of any incorporated city or borough; and

WHEREAS, This territory is completely surrounded on all sides by lands already included within the corporate limits of the City and is deemed to be urban or suburban in character.

The City Council of the City of Detroit Lakes, Minnesota does hereby ordain:

Section 1. Territory Annexed. The corporate limits of the City of Detroit Lakes are hereby extended to include the unplatted territory described as follows, which territory now, is, and heretofore been completely surrounded by territory already included within the City limits:

All those portions of land in Section 33, Township 139 N Range 41 W currently not in the corporate limits of Detroit Lakes described as follows:

Section 33, Township 139 N, Range 41 W. The territory to be annexed consists entirely of unplatted lands. All of these lands lie entirely within the County of Becker, Minnesota, and includes all those portions of land in the SW ¼ of Section 33, T139N R41 W of the Fifth Principal Meridian currently not in the corporate limits of Detroit Lakes.

Section 2. The population of the territory is 0.

Section 3. The territory to be annexed is 1.44 acres more or less.

Section 4. Upon annexation, the territory annexed will be zoned "R-2" One & Two Family Residential District

Section 5. Alteration Of Boundaries

No alteration of the stated boundaries is appropriated and that no consideration by Municipal Boundary Adjustments is necessary. Upon receipt of this Ordinance, Municipal Boundary Adjustments may review and comment but within 30 days

shall order the annexation of the area herein described. The City Administrator is directed to forward this ordinance to the Municipal Boundary Adjustments upon approval and passage.

Section 6. Reimbursement To Township

The City of Detroit Lakes by Joint Agreement with Lake View Township will reimburse the township for property taxes based on the following formula:

In 2008, 75% of the amount of taxes paid in 2006 will be reimbursed.

In 2009, 25% of the amount of taxes paid in 2006 will be reimbursed.

The amounts of reimbursement will be equal to \$3.81 in 2008 and \$1.27 in 2009.

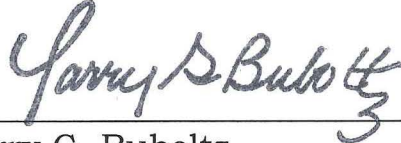
The City, at its option, may make a lump sum payment of \$5.08 in 2008.

Section 7. Filing. The City Clerk is directed to file certified copies of this Ordinance with the Secretary of State, the County Auditor of the County in which the property is located, the Township Clerk of the affected Township, and the Minnesota Department Of Administration Municipal Boundary Adjustments.

Section 8. Effective Date. This ordinance takes effect on or after publication and filing of certified copies as directed in Section 2, and approval by the Department of Administration, Municipal Boundary Adjustments.

Passed and adopted this 10th day of October 2006.

Approved this 10th day of October, 2006.



Larry G. Buboltz,
Mayor



Lynne Krieger
City Clerk

First Reading: September 13th, 2006

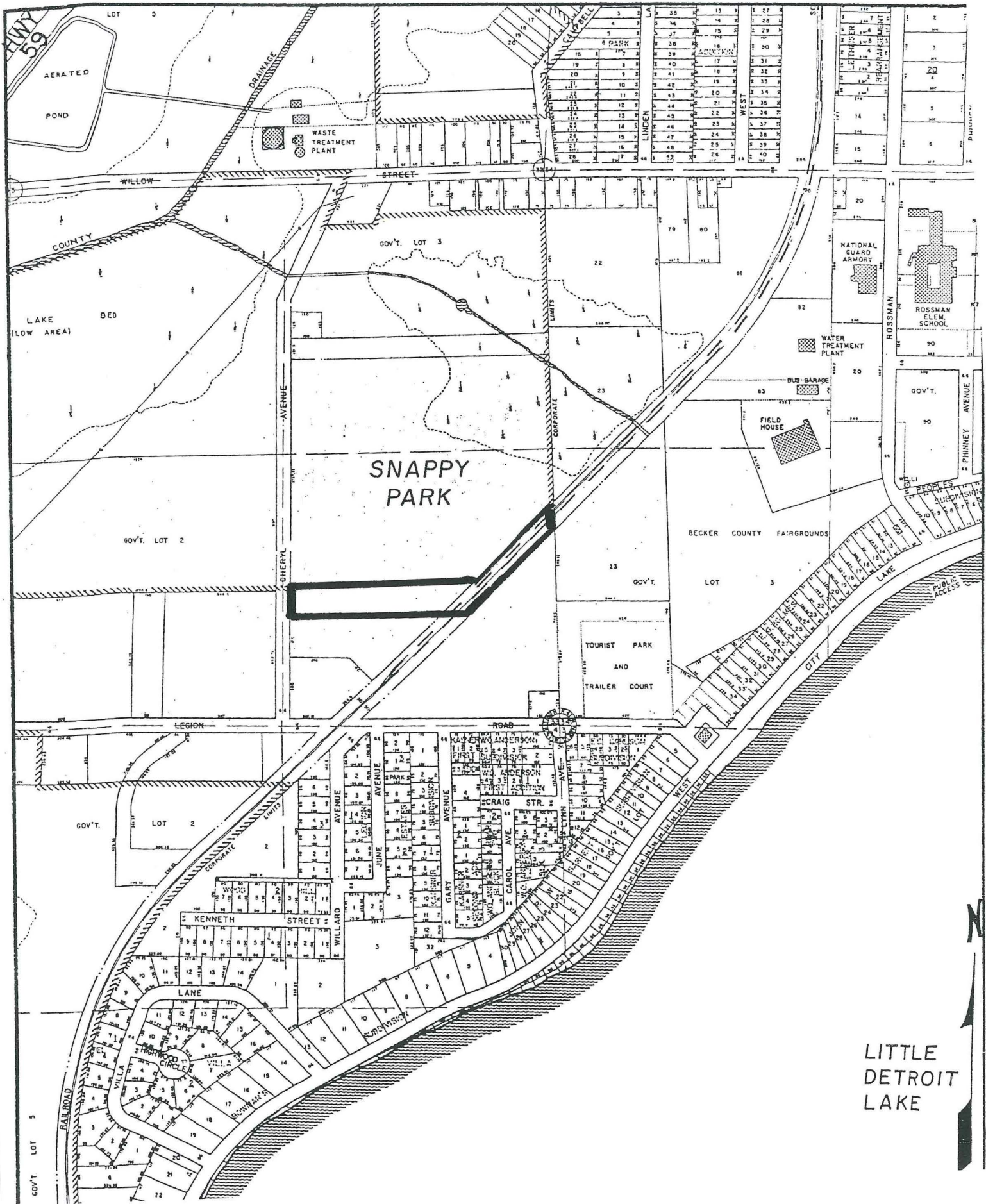
Second Reading: October 10, 2006

LOCATION MAP

Annexing property in Detroit Township
Cheryl Avenue South of Snappy Park

REC'D BY
MMB

OCT 23 2006



LITTLE
DETROIT
LAKE