

ORDINANCE NO. 131

REC'D BY
MAYOR

DEC 12 2006

CITY OF MAYER

AN ORDINANCE ANNEXING CERTAIN LAND INTO THE
CORPORATE LIMITS OF THE CITY OF MAYER,
CARVER COUNTY, MINNESOTA

November 27, 2006

THE CITY COUNCIL OF THE CITY OF MAYER, CARVER COUNTY, MINNESOTA,
ORDAINS:

Section 1. Petition by Property Owners to Annex Land. Pursuant to the provisions of Minnesota Statutes Section 414.033, Subd. 5, the City of Mayer did heretofore on January 9, 2006, receive a Petition by all of the property owners for annexation of certain land to the City of Mayer as hereinafter described. That within ten days thereafter the City did file copies of the Petition with the State of Minnesota, Office of Administrative Hearings – Municipal Boundary Adjustments Unit, the Waconia Town Board and the Carver County Board of Commissioners as provided by statute.

Section 2. Character of Land. The Land to be annexed is unplatted and does not exceed 200 acres and borders the present corporate limits of the City of Mayer and does not border any other municipality. The land is now or is about to become urban or suburban in character and is conditioned so as to be subject to municipal government and the annexation of such land will be in the best interest of the City of Mayer and the land to be annexed.

Section 3. No Objection to Annexation. Pursuant to the statute, 90 days have elapsed since the service of the Petition to Annex and no objections to the annexation have been received or served on the Office of Administrative Hearings – Municipal Boundary Adjustments Unit and the land may be annexed by ordinance.

Section 4. Land Annexed. Pursuant to Minnesota Statutes Section 414.033, Subd. 5, the corporate limits of the City of Mayer are hereby declared extended to encompass and include all that certain land situated in the County of Carver legally described as follows:

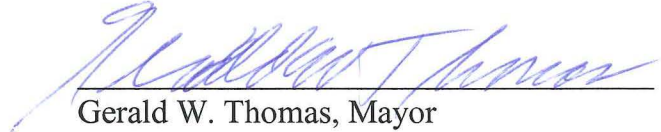
For legal description see Exhibit "A" attached hereto and made a part hereof.

Section 5. Filing. The City Clerk is hereby directed to file copies of this Ordinance with the Office of Administrative Hearings - Municipal Boundary Adjustments Unit,

the Town Clerk of the Town of Waconia, the Carver County Auditor, and the Minnesota Secretary of State and to publish this Ordinance in the *Carver County News*, all as required by law.

Section 6. Effective Date of Annexation. This Ordinance shall take effect upon its passage, receipt of approval from the Office of Administrative Hearings – Municipal Boundary Adjustments Unit, the filing of copies and publication as directed in Section 5.

Adopted by the City Council of the City of Mayer this 27th day of November, 2006.


Gerald W. Thomas, Mayor

Attest:


Lois A. Maetzold, Clerk

EXHIBIT "A"**LEGAL DESCRIPTION**

That part of the West Half of the Northeast Quarter of Section 6, Township 116, Range 25, Carver County, Minnesota, that lies Northerly and Westerly of the following described line;

Commencing at the Northeast Corner of said West Half of the Northeast Quarter; thence on an assumed bearing of North 89 degrees 40 minutes 45 seconds West, along the North line of said West Half of the Northeast Quarter, a distance of 325.00 feet to the point of beginning of the line to be described; thence South 00 degrees 19 minutes 15 seconds West, a distance of 740.47 feet, thence North 89 degrees 40 minutes 45 seconds West, a distance of 133.73 feet; thence South 01 degree 32 minutes 25 seconds East, a distance of 302.72 feet; thence South 33 degrees 06 minutes 42 seconds West, a distance of 665.54 feet; thence North 89 degrees 40 minutes 45 seconds West, a distance of 510.98 feet to the West line of said West Half of the Northeast Quarter and said line there terminating.

Excepting the North 33.00 feet thereof.

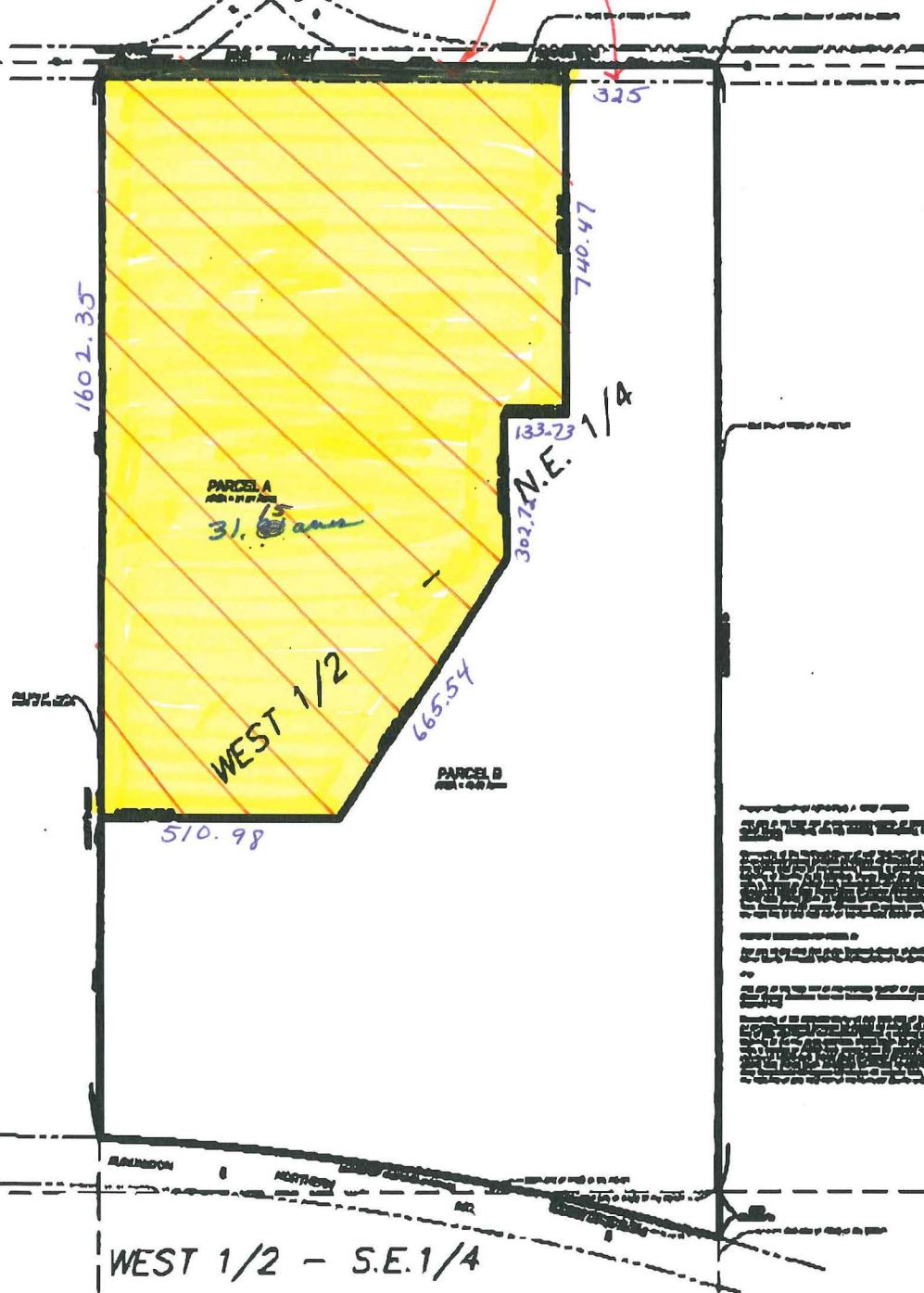
Certificate of Description



CITY OF MAYER

REC'D
MAY

DEC 12 2006



Trumpy Land Development
12/27/05
NALL
1-100
T.A.B.

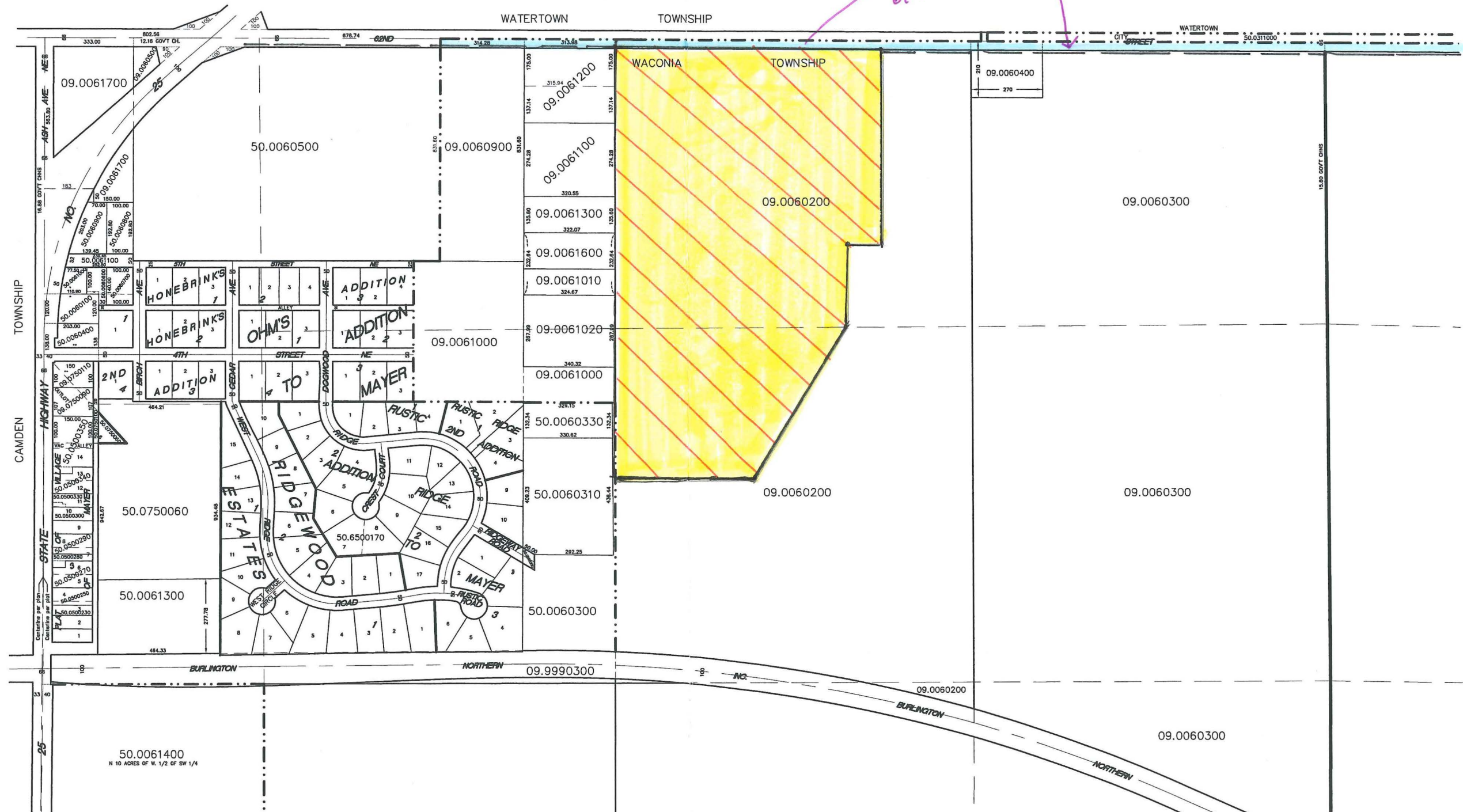
THIS IS NOT A LEGALLY RECORDED PLAT.
THIS MAP IS A COMPILATION OF RECORDS
AS THEY APPEAR IN THE CARVER COUNTY
OFFICES AND OTHER SOURCES. THIS MAP
IS ONLY TO BE USED FOR REFERENCE
PURPOSES. THE COUNTY AND ITS AGENTS
ARE NOT RESPONSIBLE FOR ANY
INACCURACIES CONTAINED THEREIN.

N 1/2 SEC. 6, T.116, R.25

T.116, R.26

T.117, R.25

→ 5 1/2 OF 62nd ST. ANNEXED
BY ORD. NO. 125 - 2-27-06
- See attached revised
1/2 sec. plat.



N 1/2 SEC. 6, T.116, R.25

T.117, R.25

