

Council member Klar offered the following ordinance and moved for its adoption:

**AN ORDINANCE PROVIDING FOR THE MATTER OF PETITION FOR
ANNEXATION PURSUANT TO MINNESOTA STATUTES 414.033, SUBD.2 (3)
TO THE CITY OF HINCKLEY**

ORDINANCE # 635

WHEREAS, the City Council of the City of Hinckley has received petition to annex certain property in accordance with State Statutes 414.033 Subd. 2 (3) owned by Mille Lacs Band of Ojibwe Indians in the County of Pine, State of Minnesota, described as follows:

That part of the north 60.00 acres of the south half of the northeast quarter of Section 29, Township 41, Range 20, Pine County, Minnesota, lying east of the easterly right-of-way line of County State Aid Highway No. 15 as now constructed and traveled. Except that part of said north 60 acres described as follows:

Commencing at the northwest quarter of said south half of the northwest quarter; thence south over and along the west boundary line of said south half of the northeast quarter, a distance of 400.00 feet; thence east and parallel with the north boundary line of said south half of the northeast quarter, a distance of 1090.00 feet; thence north and parallel with the west boundary line of said south half of the northeast quarter, a distance of 400.00 feet to the north boundary line of said south half of the northeast quarter; thence west over and along said north boundary line of the south half of the northeast quarter, a distance of 1090.00 feet to the point of beginning.

AND WHEREAS, the above described property is located in the Township of Barry, abuts existing municipal boundaries, and is approximately 41.74 acres in size,

AND WHEREAS, the City of Hinckley has provided notice of the public hearing time and location to all adjacent property owners, Barry Township, and the Department of Administration Municipal Boundary Adjustment office and Barry Township's comments have been read into the record of the hearing,

AND WHEREAS, the Hinckley Planning Commission has reviewed this annexation petition and has recommended that the City proceed with annexation,

AND WHEREAS, the Hinckley City Council has determined that the affected land is urban or suburban in character or is about to become so,

AND NOW THEREFORE, pursuant to Minn. Stat. § 414.033, Subd. 2 (3), the land described above is hereby annexed, added to and made part of the City of Hinckley, Minnesota, as if it had originally been a part thereof.

44110

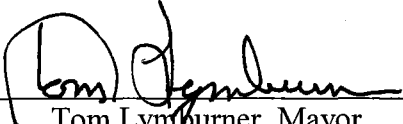
DEC 21 2005

This ordinance shall take effect and be in force following its official publication and from and after the filing of a certified copy of hereof with the Minnesota Department of Administration Municipal Boundary Adjustments, the Barry Town Clerk, the County Auditor, and the Secretary of State.

Council member Cekalla duly seconded the foregoing ordinance and all voted in favor.

Whereby the ordinance was declared duly passed and ordained.

Adopted this 6th day of December 2005.

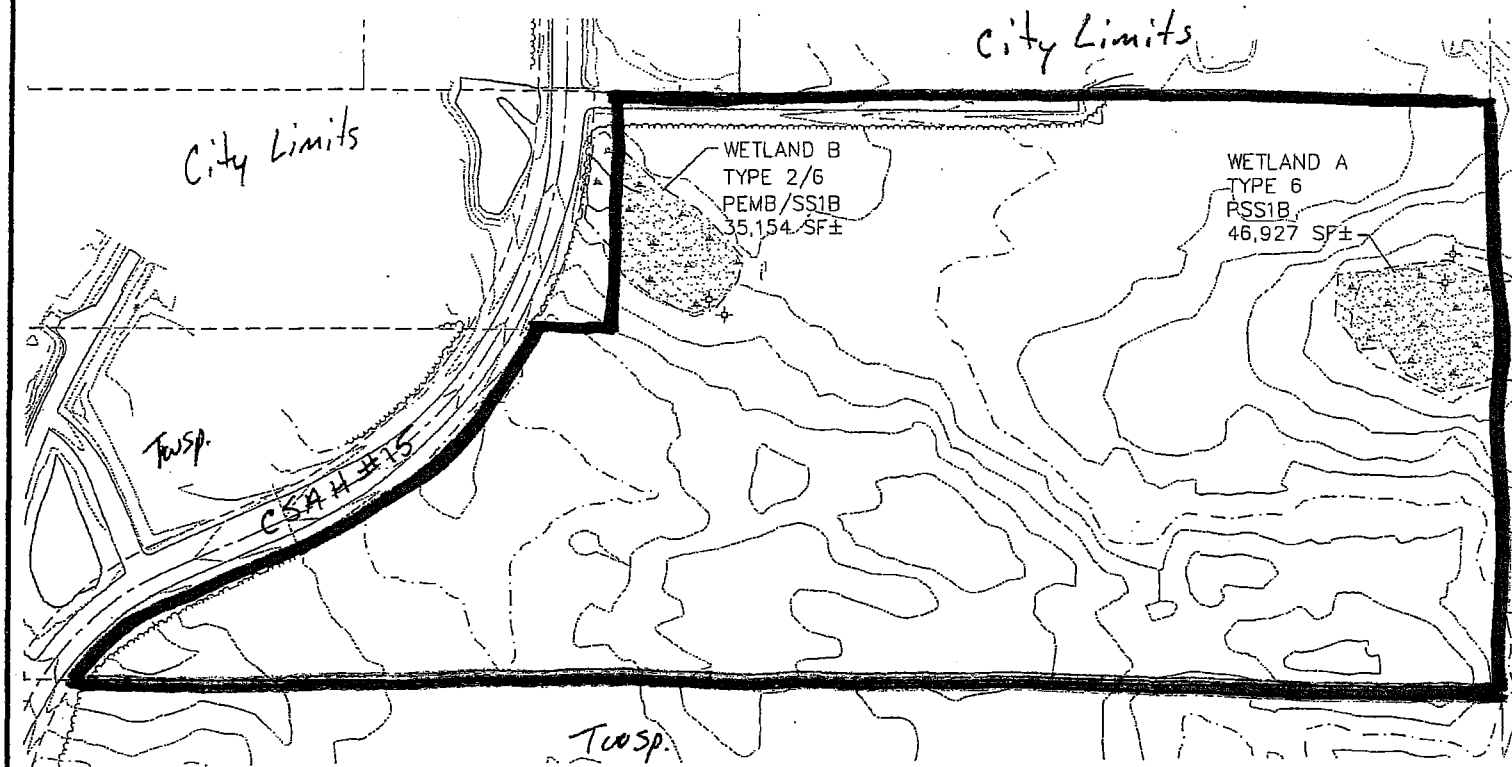


Tom Lynburner, Mayor



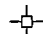
ATTEST:



James M. Ausmus, City Clerk/Administrator

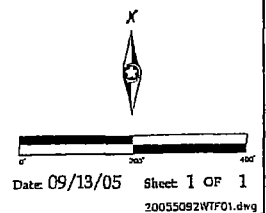


LEGEND

-  DELINEATED WETLAND
-  DELINEATED WETLAND BOUNDARY
-  WETLAND SAMPLE POINT

NOTE

Wetland boundaries were delineated and flagged in the field by Westwood Professional Services, Inc. July 8, 2005 using the routine determination method set forth in the Corps of Engineers Wetlands Delineation Manual (Environmental Laboratory, Waterways Experiment Station, 1987).



Westwood Professional Services, Inc.

3701 12th Street North, Suite 205
St. Cloud, MN 56303
Phone: 320-253-9495 Fax: 320-253-8737

Crew:	MCV
Checked:	MCV
Drawn:	NIS
Record Drawing by/date:	

Prepared for:
Mille Lacs Band of Ojibwe
Mille Lacs Government Center
HCR 67, Box 194
Onamia, MN 56359

**Schrade
Site**

Pine County, Minnesota

**Revised Wetland
Boundary Map**

Exhibit 4

CITY OF
HINCKLEY
PINE COUNTY
MINNESOTA



0 750 1500
Scale in feet

OCTOBER 1994
BY: [illegible]

PLATTED RIGHT-OF-WAY
NO STREET
VACATED

