

# CITY OF PERHAM

125 Second Avenue N.E. • P.O. Box 130 • Perham, Minnesota 56573 • www.cityofperham.com  
Phone 218-346-4455 • Fax 218-346-9364 • Toll Free 877-864-7963 • MN Relay Service TDD 800-627-3529

REC'D BY  
MMB

JUL 22 2005

## ORDINANCE NO. 239

**ANNEXATION OF LOT 5, BLOCK 2, PRAIRIE ACRES,  
COUNTY OF OTTER TAIL  
STATE OF MINNESOTA  
AN ORDINANCE EXTENDING THE CORPORATE LIMITS OF  
THE CITY OF PERHAM  
TO INCLUDE CERTAIN UNINCORPORATED PROPERTY  
ABUTTING UPON THE LIMITS OF THE CITY**

WHEREAS, the territory described below is not presently within the corporate limits of any incorporated City, Village or Borough; and

WHEREAS, the territory to be annexed is 1.5 acres; and

WHEREAS, this territory abuts upon the boundary of the City of Perham; and

WHEREAS, this territory is urban or about to become urban in character.

THE CITY COUNCIL OF PERHAM, MINNESOTA DOES HEREBY ORDAIN:

**Section 1. Territory Annexed.**

The corporate limits of the City of Perham, Minnesota are hereby extended to include the platted property described as follows:

Lot 5, Block 2, Prairie Acres

Owners, Steve Sheets, Larry Peckrul and James Hemmelgarn

Property is located at 301 450<sup>th</sup> Street, Perham, MN

Parcel # 51000990414000

**Section 2. Filing.**

The City Manager is directed to file certified copies of this Ordinance with the Board of the Township in which the property is located, the Secretary of State, The County Auditor of the County in which the property is located, the Municipal Boundary

REC'D BY  
M M B

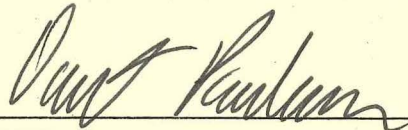
JUL 22 2005

Adjustment and any other parties as may be required pursuant to Minnesota Statutes 414.033, Subdivision 3.

Section 3. Effective Date of Annexation.

This Ordinance is effective and final on the date of publication and filing pursuant to Minnesota Statutes 414.033, Subdivision 3.2(3)

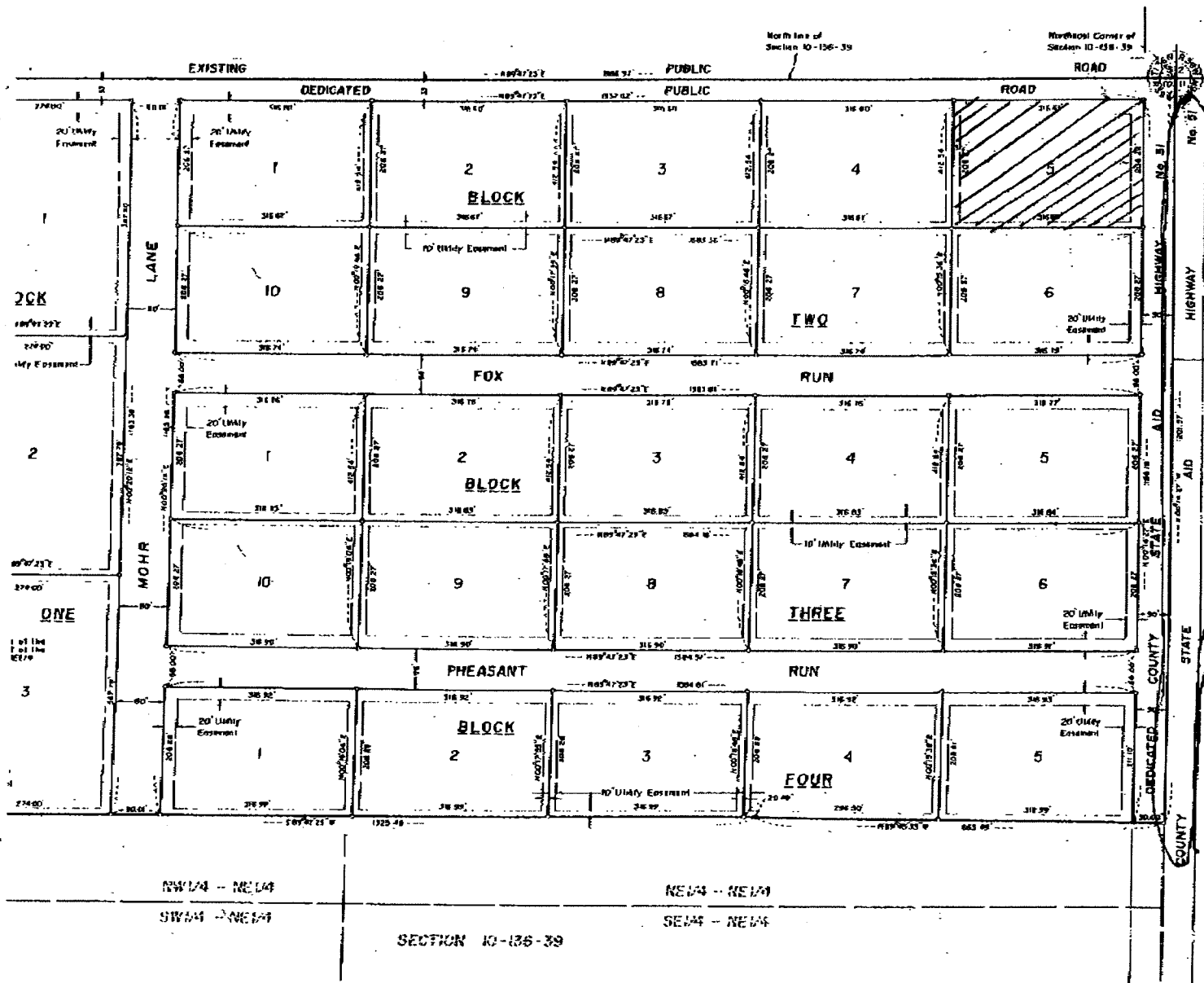
Adopted this 11<sup>th</sup> day of July 2005 by the City Council of Perham, Minnesota.

  
\_\_\_\_\_  
Mayor

ATTEST:

  
\_\_\_\_\_  
City Manager

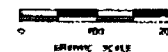
# PRAIRIE ACRES



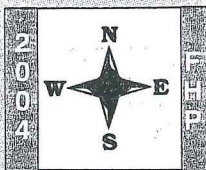
LOT AREAS		
BLOCK	LOT	AREA
One	1	106,252 Sq. Ft.
	2	106,247 Sq. Ft.
	3	106,247 Sq. Ft.
Two	4	65,318 Sq. Ft.
	5	65,318 Sq. Ft.
	6	65,318 Sq. Ft.
	7	65,318 Sq. Ft.
	8	65,318 Sq. Ft.
	9	65,318 Sq. Ft.
	10	65,318 Sq. Ft.
Three	1	65,343 Sq. Ft.
	2	65,343 Sq. Ft.
	3	65,343 Sq. Ft.
	4	65,343 Sq. Ft.
	5	65,343 Sq. Ft.
Four	1	65,318 Sq. Ft.
	2	65,318 Sq. Ft.
	3	65,318 Sq. Ft.
	4	65,318 Sq. Ft.
	5	65,318 Sq. Ft.

## LEGEND

- Denotes lot monument found
- Denotes lot monument not marked with Minnesota Registration No. 12004
- Orientation of the survey system is true
- Scale: 1 inch = 100 feet
- Plotted acreage = 54.636 acres



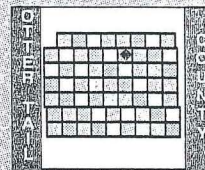




# PERHAM ROAD MAP

T-136-N • R-39-W

© Farm & Home Publishers, Ltd.



**Century 21**  
Vista, Inc.

Cell: 218-770-0340  
Mobile (500) 435-0340

Website [www.kroshusauctioneers.com](http://www.kroshusauctioneers.com)

Each Office is Independently Owned And Operated

**Larry Kroshus**  
REALTOR®/Auctioneer



**EAST OTTER TAIL  
CREDIT UNION**

NEW YORK MILLS & PERHAM, MN

24 Hr. "Otto" Teller 385-2620

ATM At NYMS Cenex C-Store

[www.eastottertailcu.org](http://www.eastottertailcu.org)

CHECKING ACCTS. SAVINGS • LOANS  
ALL SAVINGS FEDERALLY INSURED TO 100,000

M-Th 8-5, Fri 8-6, Sat 9-12

385-2070  
New York Mills

346-4450  
Perham, MN

