

REC'D BY
MMB

JUN 22 2005

ORDINANCE NUMBER 2005-5-1

**AN ORDINANCE ANNEXING PROPERTY TO THE CITY OF SHAFER, MINNESOTA
PURSUANT TO MINNESOTA STATUTES SECTION 414.033 SUBD. 2(3).**

The City Council of Shafer, Minnesota Ordains that the following land is hereby annexed to the City of Shafer, Chisago County, Minnesota pursuant to, and in accordance with, Minnesota Statutes Section 414.033 Subd. 2(3):

All that part of the East Half of the Southeast Quarter of Section 31, Township 34, Range 19, Chisago County, Minnesota, lying South of the Railroad right-of-way of former Northern Pacific Railroad, except the South 375 feet thereof; And together with a non-exclusive easement over and across the East 33 feet of the South 375 feet of the Southeast Quarter of the Southeast Quarter of Section 31, Township 34, Range 19, Chisago County, Minnesota.

Together with all hereditaments and appurtenances belonging thereto, subject to the following exceptions: ANY OTHER VALID EASEMENTS, RESTRICTIONS OR RESERVATIONS OF RECORD.

This ordinance shall be effective upon publication in the Chisago County Press and approval by the Minnesota Municipal Board.

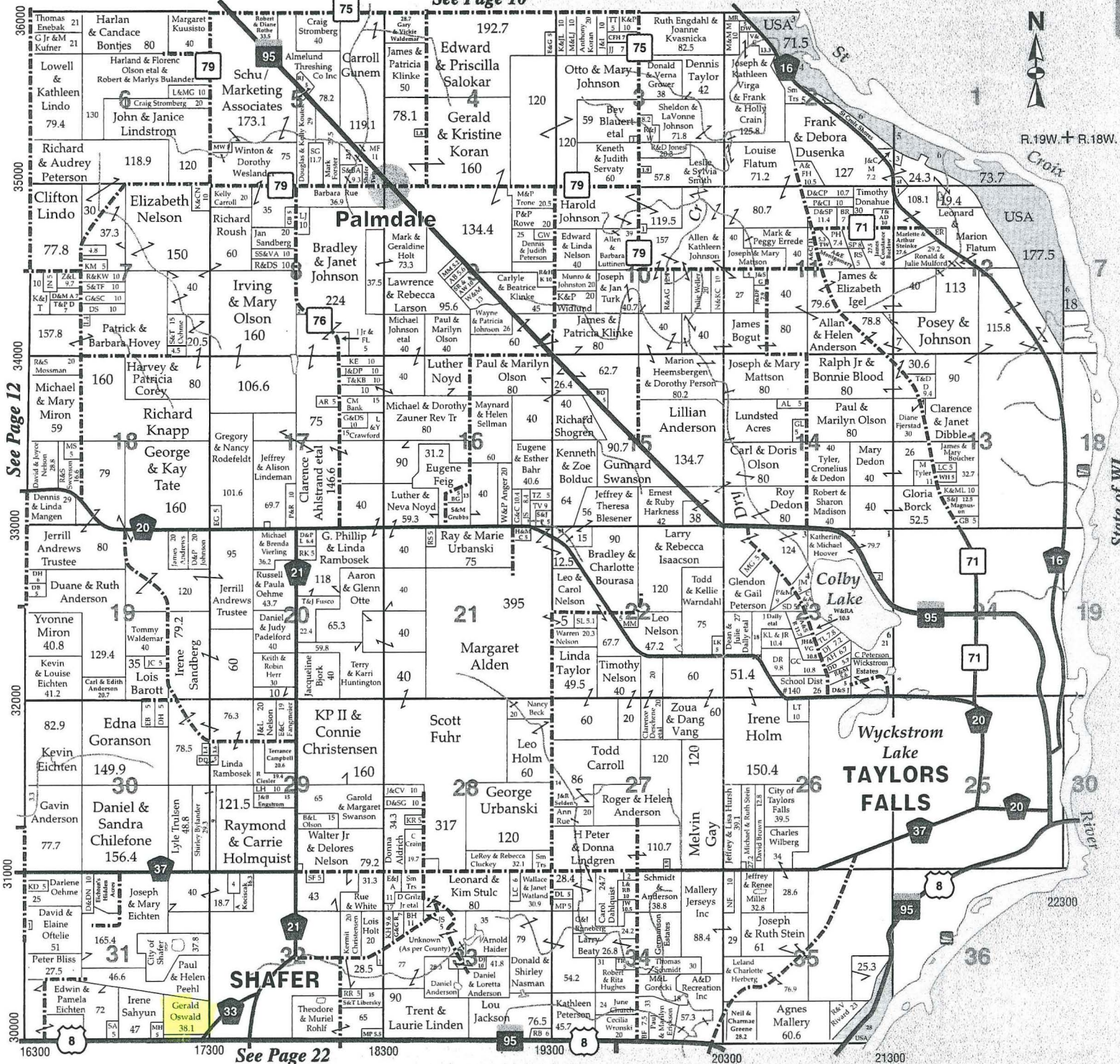
City of Shafer

Dated: May 19, 2005


Heather M. Rosa
Its Mayor

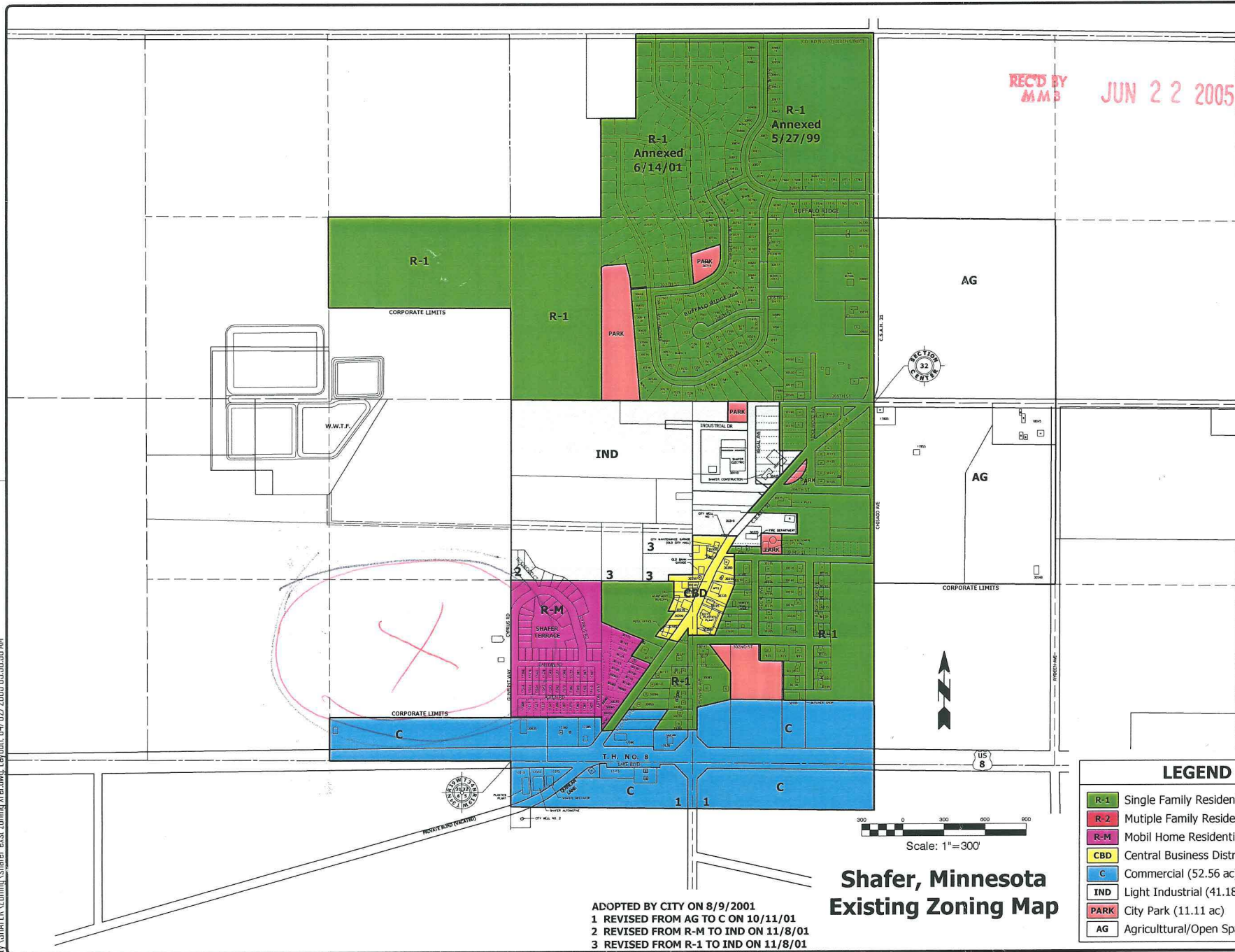
ATTEST:


Lynn Merrell
City Clerk



Minnesota
We're into
CITIZENSHIP

JUN 22 2005



ADOPTED BY CITY ON 8/9/2001
 1 REVISED FROM AG TO C ON 10/11/01
 2 REVISED FROM R-M TO IND ON 11/8/01
 3 REVISED FROM R-1 TO IND ON 11/8/01

Shafer, Minnesota Existing Zoning Map

LEGEND

R-1	Single Family Residential (211.26 ac)
R-2	Multiple Family Residential (0.0 ac)
R-M	Mobile Home Residential (25.16 ac)
CBD	Central Business District (6.18 ac)
C	Commercial (52.56 ac)
IND	Light Industrial (41.18 ac)
PARK	City Park (11.11 ac)
AG	Agricultural/Open Space (80.68 ac)

NS

and in this section that
on in determining the
topography, soil, roads,
utility to use of the land.

phy

H — Hilly

Sa — Sandy

to use

B TC — Tillable C

Tr — Timber or Trees

and placing upon it in
and number of acres.

Scale — 1 inch = 660 ft.

