

CITY OF LITCHFIELD

REC'D BY
M M B

SEP 21 2005

**ORDINANCE NO. 698
AN ORDINANCE EXTENDING THE CORPORATE LIMITS
OF THE CITY OF LITCHFIELD TO INCLUDE
CERTAIN UNINCORPORATED PROPERTY (142.5 ACRES)
OWNED BY THE CITY OF LITCHFIELD, HJP-II INVESTMENTS LIMITED
PARTNERSHIP AND KANDI KOUNTRY EXPRESS, LTD.,
AND ABUTTING UPON THE
LIMITS OF THE CITY OF LITCHFIELD IN LITCHFIELD TOWNSHIP PURSUANT
TO MINNESOTA STATUTES 414.033, SUBD. 5**

WHEREAS, a certain petition dated June 6, 2005, requesting that the property described as:

That part of the West half of Section 2, Township 119, Range 31, Meeker County, Minnesota, described as follows:

Commencing at the South Quarter Corner of said Section 2; thence on an assumed bearing of South 87 degrees 24 minutes 23 seconds West, along the South line of said Section 2, a distance of 408.06 feet to the point of beginning; thence continue South 87 degrees 24 minutes 23 seconds West, along said South line, a distance of 1360.37 feet; thence North 02 degrees 35 minutes 37 seconds West, departing from said South line, a distance of 208.70 feet; thence South 87 degrees 24 minutes 23 seconds, a distance of 208.70 feet; thence North 00 degrees 03 minutes 48 seconds West, a distance of 2624.81 feet to the North line of the Southwest Quarter of said Section 2; thence South 89 degrees 30 minutes 06 seconds West, along said North line, a distance of 649.21 feet to the West line of said Section 2; thence North 00 degrees 00 minutes 00 seconds, along said West line of Section 2; a distance of 1243.30 feet; thence North 90 degrees 00 minutes 00 seconds East, a distance of 1324.00 feet to the westerly Right-of-Way line of U.S. Highway Number 12; thence South 19 degrees 33 minutes 53 seconds East, along said Right-of-Way, a distance of 449.02 feet; thence South 58 degrees 11 minutes 34 seconds West, a distance of 30.63 feet; thence South 23 degrees 55 minutes 09 seconds East, a distance of 629.50 feet; thence South 89 degrees 30 minutes 06 seconds West, a distance of 256.83 feet; thence South 00 degrees 00 minutes 00 seconds East, a distance of 213.81 feet; thence North 89 degrees 30 minutes 06 seconds East, a distance of 491.77 feet to said Right-of-Way line; thence South 24 degrees 52 minutes 53 seconds East, a distance of 180.22 feet; thence South 01 degrees 18 minutes 07 seconds East, a distance of 497.30 feet; thence North 90 degrees 00 minutes 00 seconds West, a distance of 2.00 feet; thence South 09 degrees 17 minutes 03 seconds East, a distance of 665.95 feet; thence North 90 degrees 00 minutes 00 seconds East, a distance of 20.00 feet; thence North 86 degrees 41 minutes 41 seconds East, a distance of 290.45 feet; thence North 09 degrees 30 minutes 58 seconds East, a distance of 23.11 feet; thence North 90 degrees 00 minutes 00 seconds East, a distance of 171.24 feet; thence South 44 degrees 51 minutes 03 seconds East, a distance of 24.81 feet; thence North 71 degrees 55 minutes 03 seconds East, a distance of 28.00 feet; thence South 44 degrees 51 minutes 04 seconds East, a distance of 47.95 feet; South 22 degrees 24 minutes 59 seconds East, a distance of 187.24 feet to the East line of the Southwest Quarter of said Section 2; thence South 00 degrees 25 minutes 46 seconds East, along said East line, a distance of 807.20 feet; thence South 87 degrees 23 minutes 28 seconds West, a distance of 375.85 feet; thence North 03 degrees 37 minutes 55 seconds West, a distance of 454.59 feet to the point of beginning.

be annexed to the City of Litchfield, Minnesota, was duly presented to this Council on the 6th day of June, 2005, and

WHEREAS, said petition was signed by all owners of the property; and

WHEREAS, said property is unincorporated and abuts the City of Litchfield on its northerly boundary, and

WHEREAS, said property constitutes 142.5 acres, unplatted, and

WHEREAS, said property is not presently served by public sewer and water facilities or public sewer and water facilities are not otherwise available, and

WHEREAS, said property is currently being used for industrial purposes and development, and

WHEREAS, to facilitate said development, the property owner will be extending City services to said property, and

WHEREAS, a copy of the Petition was served upon those parties specified in Minnesota Statutes 414.033, subd. 5, and

WHEREAS, both Meeker County and Litchfield Township signed a waiver of hearing and stated they had no objection to the annexation, and

WHEREAS, provisions of Minn. Statute 414.033, subd. 13 are not applicable in that there will be no change in the electric utility service provider resulting from the annexation of the territory to the municipality.

NOW THEREFORE, THE CITY OF LITCHFIELD DOES HEREBY ORDAIN AS FOLLOWS:

1. The City Council hereby determines that the property as hereinafter described is or is about to become urban in nature in that said property is being developed for industrial purposes which need or will need city services, including public sewer and water facilities, and that none of property is now included within the limits of any city.
2. Territory annexed. The corporate limits of the City of Litchfield are hereby extended to include the following described territory, said land abutting the City of Litchfield and being 142.5 acres or less in area, and is not presently served by public sewer and water facilities or public sewer and water facilities are not otherwise available, and the City having received a petition for annexation from all the property owners of the land.

The described property identified herein consists of a total of 142.5 acres, more or less. Copies of the corporate boundary map showing the property to be annexed and its relationship to the corporate boundaries and an appropriate plat map are attached hereto.


3. Population. There are presently no people residing on the above described land.
4. Property Taxes. Pursuant to Minnesota Statutes 414.033, subd. 12, the property taxes payable on annexed land in the year 2005 shall be paid to the Township of Litchfield, Minnesota. Thereafter, the City of Litchfield shall make a cash payment, to the Township of Litchfield in accordance with the following schedule:
 - a. 2006 - an amount equal to ninety percent (90%) of the property taxes distributed to the town in regard to the annexed area in 2005;
 - b. 2007 - An amount equal to seventy percent (70%) of the property taxes distributed to the town in regard to the annexed area in 2005;
 - c. 2008 - an amount equal to fifty percent (50%) of the property taxes distributed to the town in regard to the annexed area in 2005;
 - d. 2009 - an amount equal to thirty percent (30%) of the property taxes distributed to the town in regard to the annexed area in 2005; and
 - e. 2010 - an amount equal to ten percent (10%) of the property taxes distributed to the town in regard to the annexed area in 2005.
5. Filing. The Assistant City Administrator is directed to file certified copies of this ordinance with the Secretary of State, the County Auditor of the county in which the property is located, the Town Clerk of the affected township and the Minnesota Planning.
6. Effective date of annexation. This ordinance takes effect upon its passage and Publication and the filing of certified copies as directed in paragraph 5 and approved by the Department of Administration Municipal Boundary Adjustments.

Passed and Adopted by the City Council of Litchfield, Minnesota this 1st day of August, 2005.

Attest:

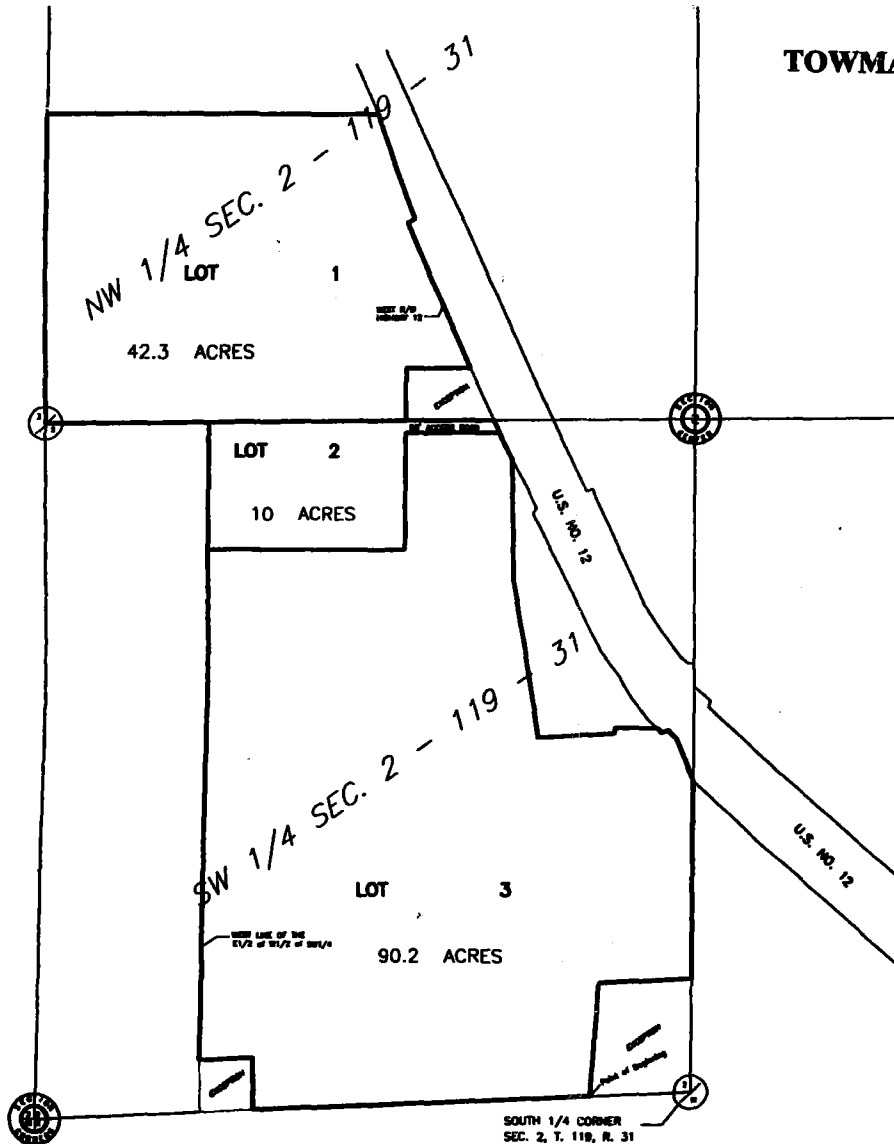

ASSISTANT CITY ADMINISTRATOR

Approved:


MAYOR

First Reading: June 6, 2005
Second Reading: August 1, 2005
Publication: August 11, 2005
Effective Date: August 1, 2005

TOWMASTER ADDITION



This part of the West half of Section 2, Township 119, Range 31, Meeker County, Minnesota, described as follows:

Commencing at the South Quarter Corner of said Section 2; thence on an assumed bearing of South 87 degrees 24 minutes 23 seconds West, along the South line of said Section 2, a distance of 408.06 feet to the point of beginning; thence continue South 87 degrees 24 minutes 23 seconds West, along said South line, a distance of 1360.37 feet; thence North 02 degrees 35 minutes 37 seconds West, departing from said South line, a distance of 208.70 feet; thence South 87 degrees 24 minutes 23 seconds, a distance of 208.70 feet; thence North 00 degrees 03 minutes 48 seconds West, a distance of 2624.81 feet to the North line of the Southwest Quarter of said Section 2; thence South 89 degrees 30 minutes 06 seconds West, along said North line, a distance of 649.21 feet to the West line of said Section 2; thence North 00 degrees 00 minutes 00 seconds, along said West line of Section 2; a distance of 1243.30 feet; thence North 90 degrees 00 minutes 00 seconds East, a distance of 1324.00 feet to the westerly Right-of-Way line of U.S. Highway Number 12; thence South 19 degrees 33 minutes 53 seconds East, along said Right-of-Way, a distance of 449.02 feet; thence South 58 degrees 11 minutes 34 seconds West, a distance of 30.63 feet; thence South 23 degrees 55 minutes 09 seconds East, a distance of 629.30 feet; thence South 89 degrees 30 minutes 06 seconds West, a distance of 256.83 feet; thence South 00 degrees 00 minutes 00 seconds East, a distance of 213.81 feet; thence North 89 degrees 30 minutes 06 seconds East, a distance of 491.77 feet to said Right-of-Way line; thence South 24 degrees 52 minutes 53 seconds East, a distance of 180.22 feet; thence South 01 degrees 18 minutes 07 seconds East, a distance of 497.30 feet; thence North 90 degrees 00 minutes 00 seconds West, a distance of 2.00 feet; thence South 09 degrees 17 minutes 03 seconds East, a distance of 665.95 feet; thence North 90 degrees 00 minutes 00 seconds East, a distance of 20.00 feet; thence North 86 degrees 41 minutes 41 seconds East, a distance of 290.45 feet; thence North 09 degrees 30 minutes 58 seconds East, a distance of 23.11 feet; thence North 90 degrees 00 minutes 00 seconds East, a distance of 171.24 feet; thence South 44 degrees 51 minutes 03 seconds East, a distance of 24.81 feet; thence North 71 degrees 55 minutes 03 seconds East, a distance of 28.00 feet; thence South 44 degrees 51 minutes 04 seconds East, a distance of 47.95 feet; South 22 degrees 24 minutes 59 seconds East, a distance of 187.24 feet to the East line of the Southwest Quarter of said Section 2; thence South 00 degrees 25 minutes 46 seconds East, along said East line, a distance of 807.20 feet; thence South 87 degrees 23 minutes 28 seconds West, a distance of 375.85 feet; thence North 03 degrees 37 minutes 55 seconds West, a distance of 454.59 feet to the point of beginning.

PROPOSED PLAT EXHIBIT CITY OF LITCHFIELD



BOLTON & MENK, INC.
Consulting Engineers & Surveyors
2040 HIGHWAY 12 EAST, WILLMAR, MN 56201 (320) 231-3956
MANKATO, MN FAIRMONT, MN SLEEPY EYE, MN WILLMAR, MN
BURNSVILLE, MN CHASKA, MN AMES, IA

FOR: CITY OF LITCHFIELD

JOB NUMBER:

FIELD BOOK:

DRAWN BY:

LITCHFIELD, MINNESOTA

RECD BY
M.M.B.
SEP 21 2005



ANNEXATION
AREA

U.S. NO. 12

ELEVENTH