

JUN 16 2005

IN THE MATTER OF THE PETITION OF
THE CITY OF LITCHFIELD, HJP-II INVESTMENTS LIMITED PARTNERSHIP and
KANDI KOUNTRY EXPRESS, LTD., d/b/a TOWMASTER, INC.
FOR ANNEXATION
PURSUANT TO MINNESOTA STATUTES §414.033, SUBD. 5

TO: Council of the City of Litchfield, Minnesota

AND

Office of Administration Hearings
Municipal Boundary Adjustment Unit
658 Cedar Street, Room 300
St. Paul, MN 55155
(651) 284-3385

PETITIONERS STATE: The property owners are required to commence a proceeding under Minnesota Statutes §414.033, Subd. 5.

It is hereby requested by all of the property owners of the area proposed for annexation to annex certain property described herein lying in the Township of Litchfield to the City of Litchfield, County of Meeker, Minnesota.

Attached hereto and made a part hereof is City of Litchfield Resolution No. 056.171 authorizing the City's participation in this Petition as a property owner.

The area proposed for annexation is described as follows:

That part of the West half of Section 2, Township 119, Range 31, Meeker County, Minnesota, described as follows:

Commencing at the South Quarter Corner of said Section 2; thence on an assumed bearing of South 87 degrees 24 minutes 23 seconds West, along the South line of said Section 2, a distance of 408.06 feet to the point of beginning; thence continue South 87 degrees 24 minutes 23 seconds West, along said South line, a distance of 1360.37 feet; thence North 02 degrees 35 minutes 37 seconds West, departing from said South line, a distance of 208.70 feet; thence South 87 degrees 24 minutes 23 seconds, a distance of 208.70 feet; thence North 00 degrees 03 minutes 48 seconds West, a distance of 2624.81 feet to the North line of the Southwest Quarter of said Section 2; thence South 89 degrees 30 minutes 06 seconds West, along said North line, a distance of 649.21 feet to the West line of said Section 2; thence North 00 degrees 00 minutes 00 seconds, along said West line of Section 2; a distance of 1243.30 feet; thence North 90 degrees 00 minutes 00 seconds East, a distance of 1324.00 feet to the westerly Right-of-Way line of U.S. Highway Number 12; thence South 19 degrees 33 minutes 53 seconds East, along said Right-of-Way, a distance of 449.02 feet; thence South 58 degrees

11 minutes 34 seconds West, a distance of 30.63 feet; thence South 23 degrees 55 minutes 09 seconds East, a distance of 629.50 feet; thence South 89 degrees 30 minutes 06 seconds West, a distance of 256.83 feet; thence South 00 degrees 00 minutes 00 seconds East, a distance of 213.81 feet; thence North 89 degrees 30 minutes 06 seconds East, a distance of 491.77 feet to said Right-of-Way line; thence South 24 degrees 52 minutes 53 seconds East, a distance of 180.22 feet; thence South 01 degrees 18 minutes 07 seconds East, a distance of 497.30 feet; thence North 90 degrees 00 minutes 00 seconds West, a distance of 2.00 feet; thence South 09 degrees 17 minutes 03 seconds East, a distance of 665.95 feet; thence North 90 degrees 00 minutes 00 seconds East, a distance of 20.00 feet; thence North 86 degrees 41 minutes 41 seconds East, a distance of 290.45 feet; thence North 09 degrees 30 minutes 58 seconds East, a distance of 23.11 feet; thence North 90 degrees 00 minutes 00 seconds East, a distance of 171.24 feet; thence South 44 degrees 51 minutes 03 seconds East, a distance of 24.81 feet; thence North 71 degrees 55 minutes 03 seconds East, a distance of 28.00 feet; thence South 44 degrees 51 minutes 04 seconds East, a distance of 47.95 feet; South 22 degrees 24 minutes 59 seconds East, a distance of 187.24 feet to the East line of the Southwest Quarter of said Section 2; thence South 00 degrees 25 minutes 46 seconds East, along said East line, a distance of 807.20 feet; thence South 87 degrees 23 minutes 28 seconds West, a distance of 375.85 feet; thence North 03 degrees 37 minutes 55 seconds West, a distance of 454.59 feet to the point of beginning.

1. There are three property owners in the area proposed for annexation.
2. Three property owners have signed this petition.
3. Said property is unincorporated, abuts on the city's North boundary, and is not included within any other municipality.
4. The area of land proposed for annexation, is a total of 142.5, unplatted, acres.
5. The reason for the requested annexation is that the property is in need of sewer and water services that the township is unable to provide.
6. The area proposed for annexation will be zoned industrial.
7. The petitioners have waived any notice concerning Minnesota Statute §414.033, Subd. 13.
8. All of the area proposed for annexation is or is about to become urban or suburban in character.
9. The area to be annexed is not included in any other boundary adjustment proceeding pending before the Department of Administration – Municipal Boundary Adjustments.

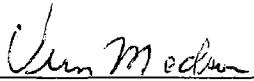
JUN 16 2005

10. The area proposed for annexation is not included in any area that has already been designated for orderly annexation pursuant to Minnesota Statute §414.0325.

PETITIONERS REQUEST: That pursuant to Minnesota Statute §414.033, the property described herein be annexed to and included within the City of Litchfield, Minnesota.

Dated: June 6, 2005

CITY OF LITCHFIELD

By: 
It's: Mayor

Dated: June 6, 2005

By: 
It's: City Administrator

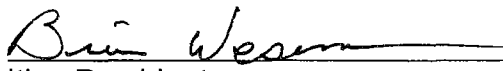
Dated: June 6, 2005

HJP-II INVESTMENTS LIMITED
PARTNERSHIP

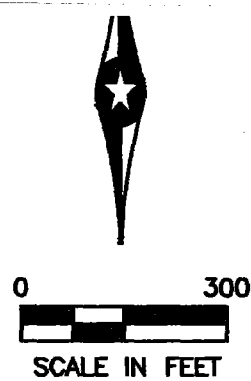
By: 
It's: General Partner

Dated: June 6, 2005

KANDI KOUNTRY EXPRESS, LTD.,
d/b/a TOWMASTER, INC.

By: 
It's: President

NOTE: Pursuant to Minnesota Statutes 414 and Minnesota Rules 6000.0800, the petition to the Department of Administration is accompanied by a certification showing that a copy of the petition was filed within 10 days after service on the annexing city with the Town of Litchfield on JUNE 8, 2005 and the County of Meeker on JUNE 8, 2005.



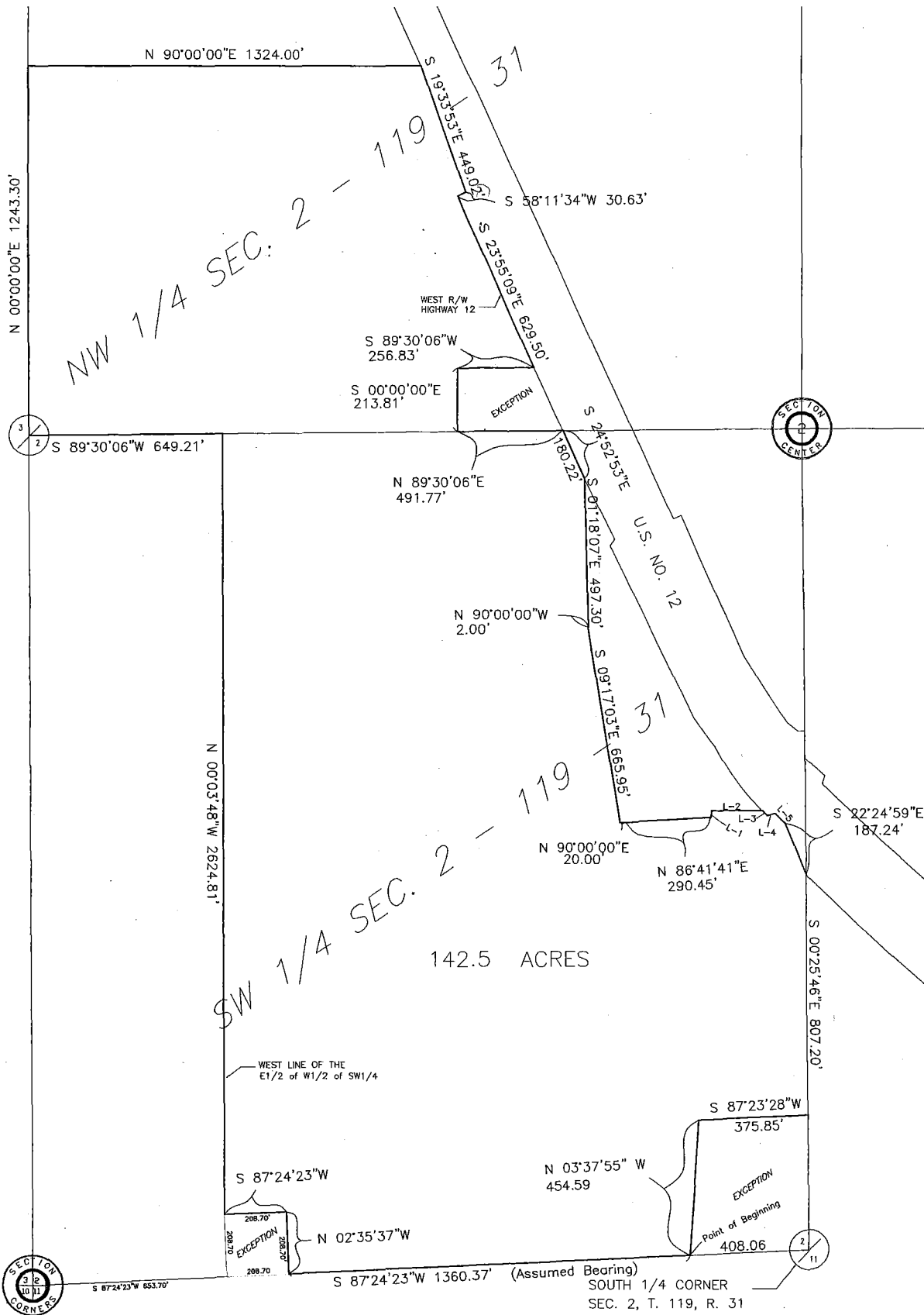
LEGAL DESCRIPTION

That part of the West half of Section 2, Township 119,
Range 31, Meeker County, Minnesota, described as follows:

Commencing at the South Quarter Corner of said Section 2; thence on an assumed bearing of South 87 degrees 24 minutes 23 seconds West, along the South line of said Section 2, a distance of 408.06 feet to the point of beginning; thence continue South 87 degrees 24 minutes 23 seconds West, along said South line, a distance of 1360.37 feet; thence North 02 degrees 35 minutes 37 seconds West, departing from said South line, a distance of 208.70 feet; thence South 87 degrees 24 minutes 23 seconds, a distance of 208.70 feet; thence North 00 degrees 03 minutes 48 seconds West, a distance of 2624.81 feet to the North line of the Southwest Quarter of said Section 2; thence South 89 degrees 30 minutes 06 seconds West, along said North line, a distance of 649.21 feet to the West line of said Section 2; thence North 00 degrees 00 minutes 00 seconds, along said West line of Section 2, a distance of 1243.30 feet; thence North 90 degrees 00 minutes 00 seconds East, a distance of 1324.00 feet to the westerly Right-of-Way line of U.S. Highway Number 12; thence South 19 degrees 33 minutes 53 seconds East, along said Right-of-Way, a distance of 449.02 feet; thence South 58 degrees 11 minutes 34 seconds West, a distance of 30.63 feet; thence South 23 degrees 55 minutes 09 seconds East, a distance of 629.50 feet; thence South 89 degrees 30 minutes 06 seconds West, a distance of 256.83 feet; thence South 00 degrees 00 minutes 00 seconds East, a distance of 213.81 feet; thence North 89 degrees 30 minutes 06 seconds East, a distance of 491.77 feet to said Right-of-Way line; thence South 24 degrees 52 minutes 53 seconds East, a distance of 180.22 feet; thence South 01 degrees 18 minutes 07 seconds East, a distance of 497.30 feet; thence North 90 degrees 00 minutes 00 seconds West, a distance of 2.00 feet; thence South 09 degrees 17 minutes 03 seconds East, a distance of 665.95 feet; thence North 90 degrees 00 minutes 00 seconds East, a distance of 20.00 feet; thence North 86 degrees 41 minutes 41 seconds East, a distance of 290.45 feet; thence North 09 degrees 30 minutes 58 seconds East, a distance of 23.11 feet; thence North 90 degrees 00 minutes 00 seconds East, a distance of 171.24 feet; thence South 44 degrees 51 minutes 03 seconds East, a distance of 24.81 feet; thence North 71 degrees 55 minutes 03 seconds East, a distance of 28.00 feet; thence South 44 degrees 51 minutes 04 seconds East, a distance of 47.95 feet; South 22 degrees 24 minutes 59 seconds East, a distance of 187.24 feet to the East line of the Southwest Quarter of said Section 2; thence South 00 degrees 25 minutes 46 seconds East, along said East line, a distance of 807.20 feet; thence South 87 degrees 23 minutes 28 seconds West, a distance of 375.85 feet; thence North 03 degrees 37 minutes 55 seconds West, a distance of 454.59 feet to the point of beginning.

REC'D BY
MMB

JUN 16 2005





ANNEXATION
AREA

U.S. NO. 12