

**ORDINANCE NO. 354
THIRD SERIES**

**AN ORDINANCE EXTENDING THE CORPORATE LIMITS OF THE CITY OF RED WING
TO INCLUDE CERTAIN UNINCORPORATED LAND ABUTTING THE CITY OF RED WING**

THE CITY COUNCIL OF THE CITY OF RED WING DOES ORDAIN:

WHEREAS, the City of Red Wing received a petition for annexation from the First Covenant Church, 2302 Hay Creek Trail, to annex approximately 3 acres located within Hay Creek Township; and

WHEREAS, the petition was signed by all owners of said territory; and

WHEREAS, the land described in the petition abuts upon the southern boundary of the city limits and is less than 60 acres in area; and

WHEREAS, Minnesota Statutes, 414.033 allows for the annexation of the Property by ordinance; and

WHEREAS, the annexation petition meets the requirements as set forth in Minnesota State Statutes 414.033 Subd. 2. (3); and

WHEREAS, the City determined that the petition received was adequate; and

WHEREAS, according to State Statutes 414.033 Subd. 2b. the City of Red Wing conducted a public hearing on April 26, 2004 and gave 30 days written notice by certified mail to Hay Creek Township of said public hearing.

NOW, THEREFORE, THE CITY COUNCIL OF THE CITY OF RED WING DOES ORDAIN:

Section 1. The City Council hereby determines (1) that the territory described herein abuts upon the city limits and is urban or suburban in character; and (2) that none of the territory is now included within the limits of any incorporated city.

Section 2. The population of the territory is zero.

Section 3. The corporate limits of the city are hereby extended to include the land described as follows and the same is hereby annexed to and included within the city as effectually as if it had originally been a part thereof, to wit:


Part of the NW ¼ of NW ¼ of Section 6, 112 14 Beg. 863 8/10 Ft. S of NW Cor. S 99 Ft. S 43 Deg. E 212 Ft. NE Alg. Road 479 Ft. N 39 ½ Deg. W 283 5/10 Ft. S 50 ½ Deg. W 434 7/10 Ft. to Beg. In Hay Creek Township, Goodhue County, State of Minnesota.

Section 4. The city clerk is hereby directed to file certified copies of this ordinance with the Minnesota Municipal Board, the Secretary of State, the Hay Creek Town Clerk, and the Goodhue County Auditor.

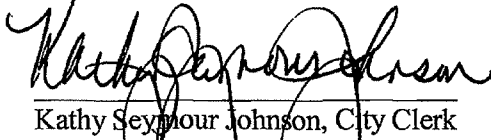
Section 5. This Ordinance shall be in full force and effect after its adoption and publication in accordance with the City Charter and Minn Stat. §410.12 Subd. 7.

Introduced the 26th day of April 2004.

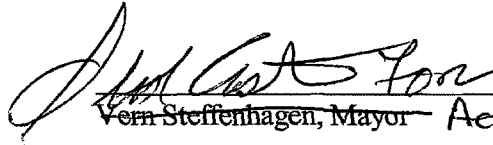
Adopted this 10th day of May 2004.


Stephen Castner, Council President

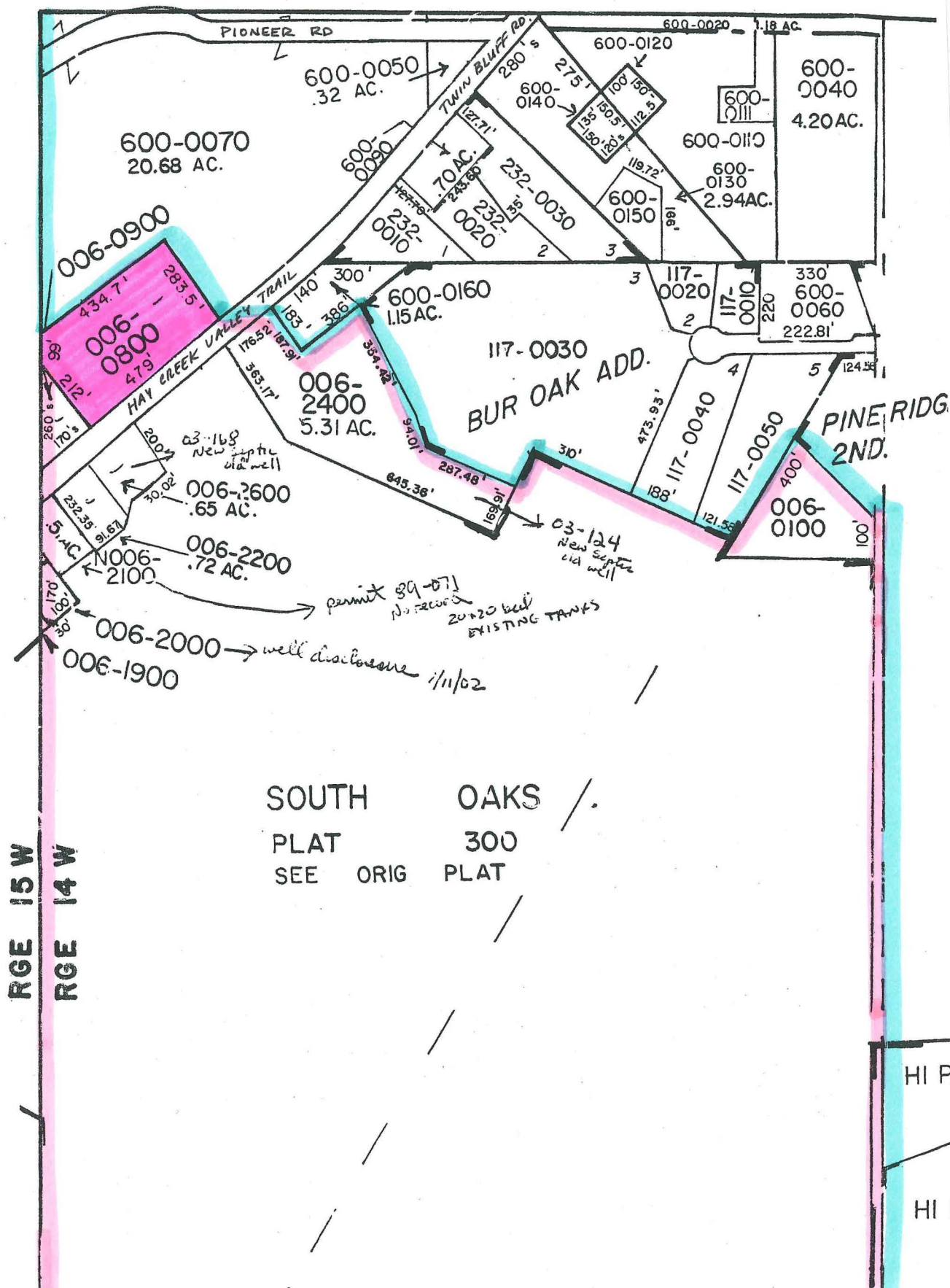
ATTEST:

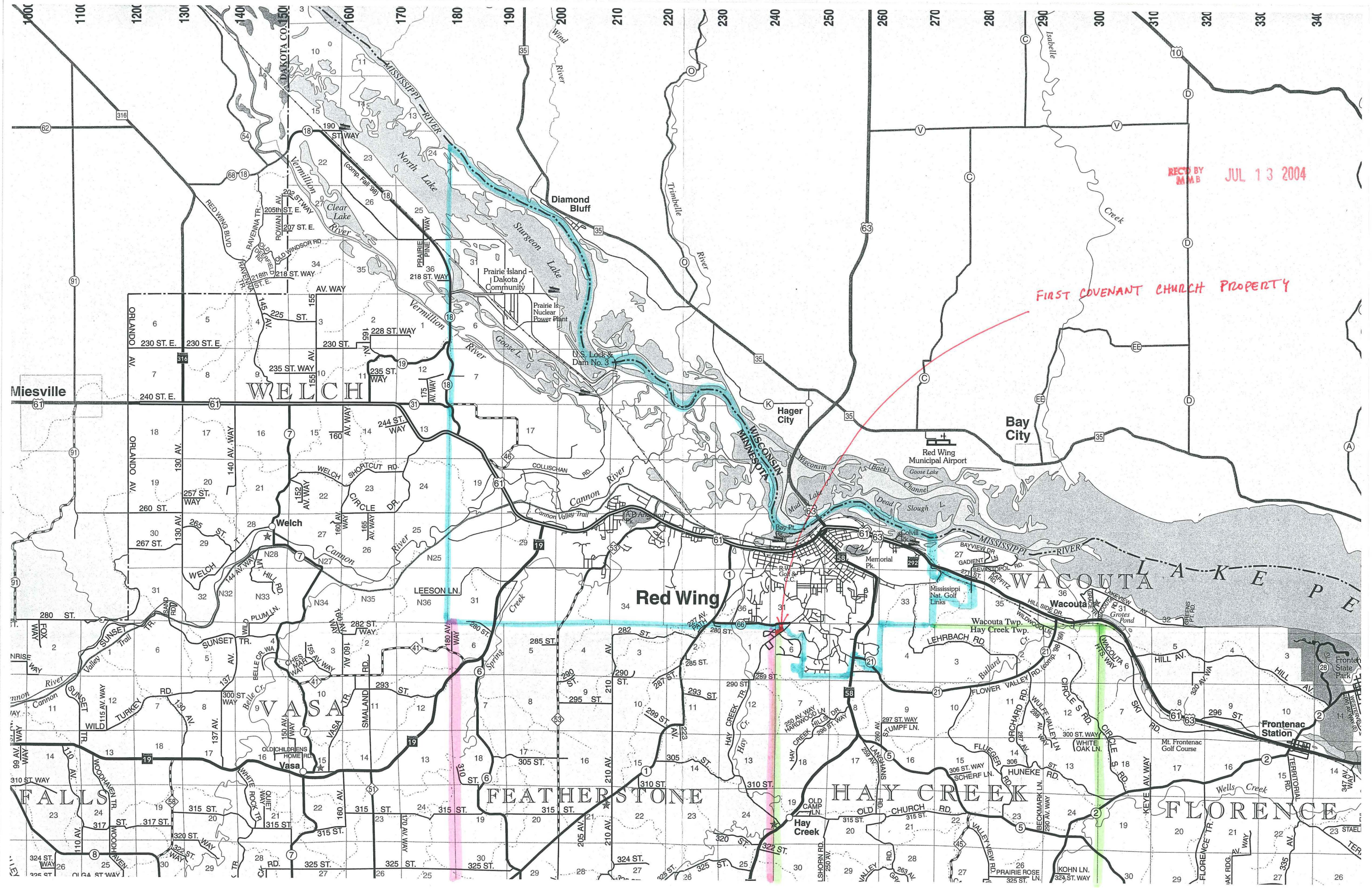

Kathy Seymour Johnson, City Clerk

Presented to the Mayor at 9:44 pm on this 10th day of May 2004. Approved this 10th day of May 2004.


~~Vern Steffenhagen, Mayor~~ Acting Mayor

JUL 13 2004





REC'D BY MAM JUL 13 2004

FIRST COVENANT CHURCH PROPERTY

Miesville

WELCH

Red Wing

Bay City

Wacouta

FALLS

VASA

FEATHERSTONE

HAY CREEK

FLORENCE