

Ordinance No. 103

AN ORDINANCE EXTENDING THE CORPORATE LIMITS
OF THE CITY OF NEW YORK MILLS TO INCLUDE
CERTAIN UNINCORPORATED LAND
ABUTTING UPON THE CITY LIMITS

WHEREAS, the land embraced within the area herinafter described consists of 40 acres of unplatted land, no part of which is included within the city limits of an incorporated city; and

WHEREAS, the land herinafter described abuts upon the city limits and is deemed to be urban or suburban in character because it is adjacent to other municipal residential developments and is currently being purchased by the City under the terms of a Contact for Deed;

NOW THEREFORE, The City Council resolves as follows


1. Territory Annexed The corporate limits of the City of New York Mills are hereby extended to include the unplatted land described as follows and the same is hereby annexed to and included within the City as effectually as if it had originally been a part thereof:

The Northwest $\frac{1}{4}$ of the Northwest $\frac{1}{4}$ of Section 9, Township 135, Range 37


2. Filing The City Clerk is hereby directed to file certified copies of this ordinance with the Minnesota municipal board, Newton Township board, the Otter Tail County Auditor, and the Minnesota Secretary of State.

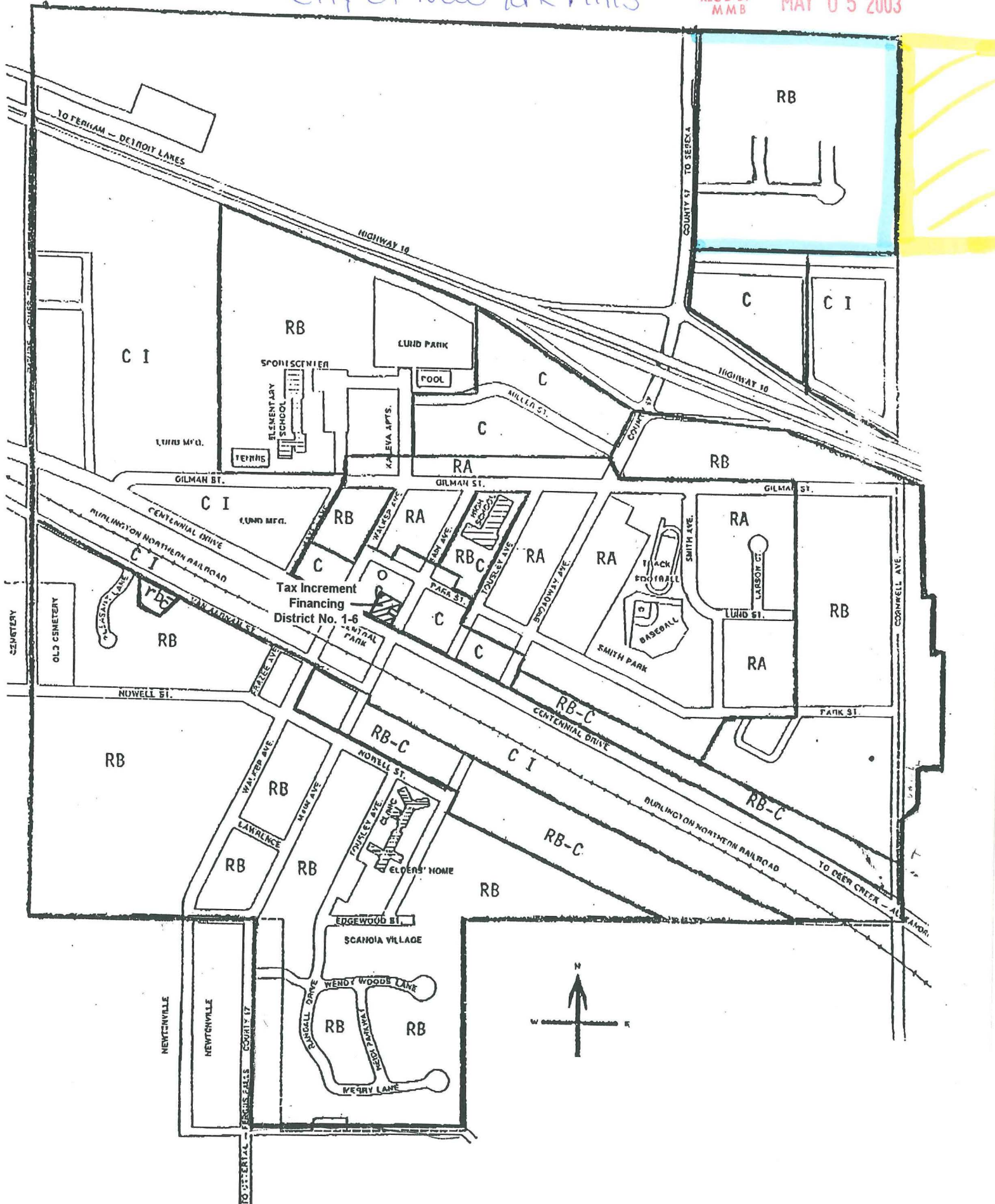
3. Effective Date This ordinance takes effect upon its passage and publication and the filing of the certified copies as directed in the immediately foregoing paragraph.

Adopted by the City Council on this 21 day of April, 2003


Randy Clarksean, Mayor

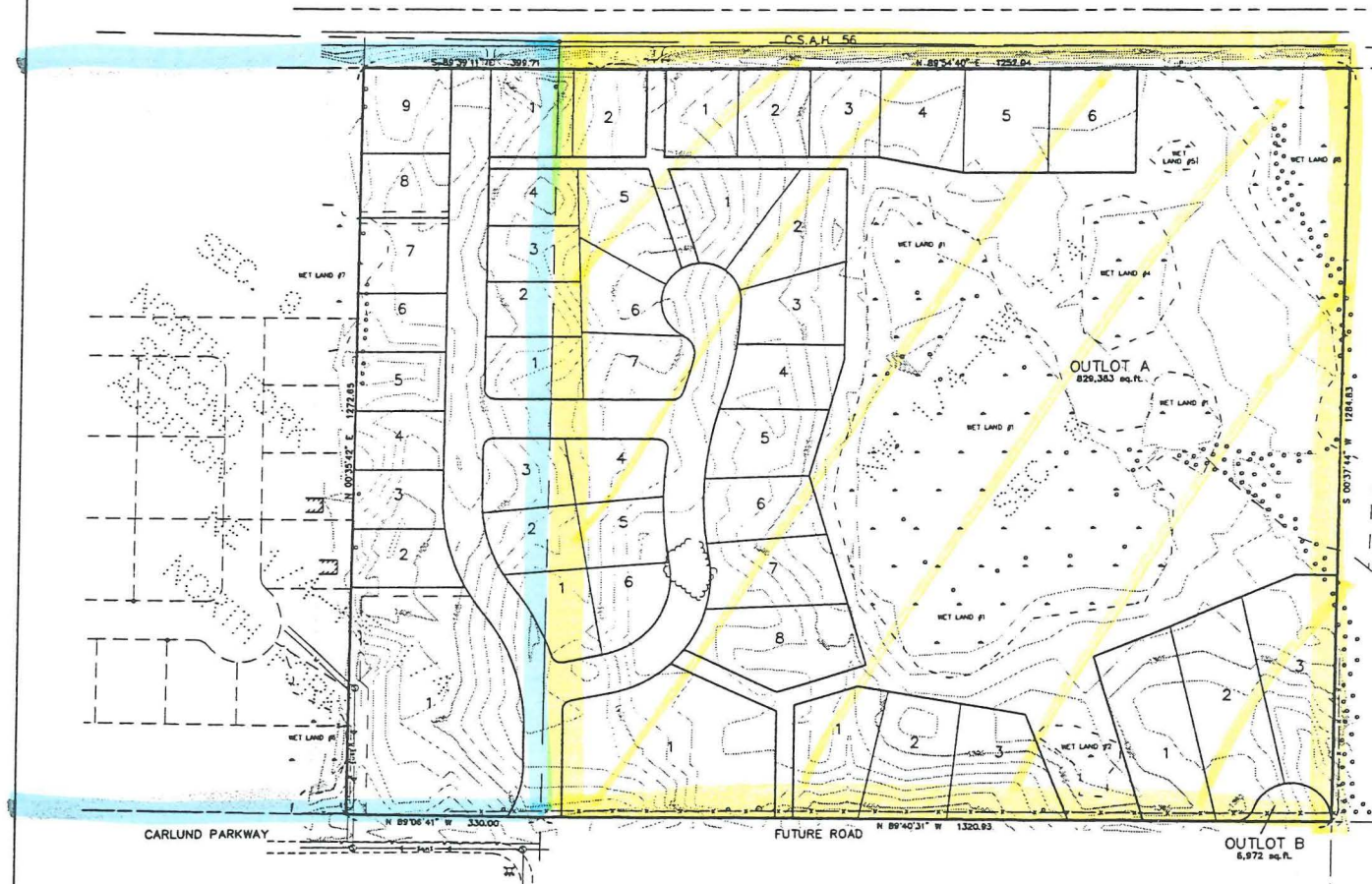
ATTEST:


Jodi Ericksrud, City Clerk



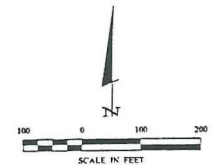
DEVELOPMENT PLAN

CITY OF NEW YORK MILLS
OTTER TAIL COUNTY, MINNESOTA



Lot Table

Lot	Block	Area (sq. ft.)
LOT 1, BLOCK ONE		104,841
LOT 2, BLOCK ONE		10,610
LOT 3, BLOCK ONE		10,610
LOT 4, BLOCK ONE		10,600
LOT 5, BLOCK ONE		10,600
LOT 6, BLOCK ONE		10,600
LOT 7, BLOCK ONE		10,600
LOT 8, BLOCK ONE		10,600
LOT 9, BLOCK ONE		10,600
LOT 1, BLOCK TWO		78,000
LOT 2, BLOCK TWO		10,100
LOT 3, BLOCK TWO		10,100
LOT 4, BLOCK TWO		10,100
LOT 5, BLOCK TWO		10,100
LOT 6, BLOCK TWO		10,100
LOT 7, BLOCK TWO		10,100
LOT 8, BLOCK TWO		10,100
LOT 9, BLOCK TWO		10,100
LOT 1, BLOCK THREE		10,100
LOT 2, BLOCK THREE		10,100
LOT 3, BLOCK THREE		10,100
LOT 4, BLOCK THREE		10,100
LOT 5, BLOCK THREE		10,100
LOT 6, BLOCK THREE		10,100
LOT 7, BLOCK THREE		10,100
LOT 8, BLOCK THREE		10,100
LOT 9, BLOCK THREE		10,100
LOT 1, BLOCK FOUR		10,100
LOT 2, BLOCK FOUR		10,100
LOT 3, BLOCK FOUR		10,100
LOT 4, BLOCK FOUR		10,100
LOT 5, BLOCK FOUR		10,100
LOT 6, BLOCK FOUR		10,100
LOT 7, BLOCK FOUR		10,100
LOT 8, BLOCK FOUR		10,100
LOT 9, BLOCK FOUR		10,100
LOT 1, BLOCK FIVE		10,100
LOT 2, BLOCK FIVE		10,100
LOT 3, BLOCK FIVE		10,100
LOT 4, BLOCK FIVE		10,100
LOT 5, BLOCK FIVE		10,100
LOT 6, BLOCK FIVE		10,100
LOT 7, BLOCK FIVE		10,100
LOT 8, BLOCK FIVE		10,100
LOT 9, BLOCK FIVE		10,100
LOT 1, BLOCK SIX		10,100
LOT 2, BLOCK SIX		10,100
LOT 3, BLOCK SIX		10,100
LOT 4, BLOCK SIX		10,100
LOT 5, BLOCK SIX		10,100
LOT 6, BLOCK SIX		10,100
LOT 7, BLOCK SIX		10,100
LOT 8, BLOCK SIX		10,100
LOT 9, BLOCK SIX		10,100
LOT 1, BLOCK SEVEN		10,100
LOT 2, BLOCK SEVEN		10,100
LOT 3, BLOCK SEVEN		10,100
LOT 4, BLOCK SEVEN		10,100
LOT 5, BLOCK SEVEN		10,100
LOT 6, BLOCK SEVEN		10,100
LOT 7, BLOCK SEVEN		10,100
LOT 8, BLOCK SEVEN		10,100
LOT 9, BLOCK SEVEN		10,100
LOT 1, BLOCK EIGHT		10,100
LOT 2, BLOCK EIGHT		10,100
LOT 3, BLOCK EIGHT		10,100
LOT 4, BLOCK EIGHT		10,100
LOT 5, BLOCK EIGHT		10,100
LOT 6, BLOCK EIGHT		10,100
LOT 7, BLOCK EIGHT		10,100
LOT 8, BLOCK EIGHT		10,100
LOT 9, BLOCK EIGHT		10,100
LOT 1, BLOCK NINE		10,100
LOT 2, BLOCK NINE		10,100
LOT 3, BLOCK NINE		10,100
LOT 4, BLOCK NINE		10,100
LOT 5, BLOCK NINE		10,100
LOT 6, BLOCK NINE		10,100
LOT 7, BLOCK NINE		10,100
LOT 8, BLOCK NINE		10,100
LOT 9, BLOCK NINE		10,100



PLAN DATED: 12/31/02

 - Area already within City limits
 - Area to be Annexed

REC'D BY MMB MAY 05 2003

Landecker & Associates, Inc.
Engineering, Surveying, Planning
P.O. Box 1000
St. Paul, MN 55101

DATE: 12/31/02
 BY: [Signature]
 REVISIONS:
 DESCRIPTION:
 DATE: 12/31/02
 REVISION: 1
 DESCRIPTION: 1" = 100'
 DATE: 12/31/02
 REVISION: 1
 DESCRIPTION: 1" = 100'

DEVELOPMENT PLAN
 City of New York Mills
 1 of 1