

**AN ORDINANCE EXTENDING THE CORPORATE
LIMITS OF THE CITY OF BAGLEY**

Minnesota Planning #A-6844 Bagley

WHEREAS, A petition requesting annexation of territory hereinafter described was duly presented to the City Council.

WHEREAS, These proceedings are authorized under Minnesota Statutes 414.033.

WHEREAS, the quantity of land embraced within the area described in the Petition is approximately one acre of platted and unplatted land, and whereas the land described in the Petition abuts the City limits of Bagley on the northwest boundary thereof,

NOW THEREFORE, The City Council of Bagley, Minnesota, ordains:

Section 1. The City Council hereby determines (1) that the annexation will be in the best interests of the City and of the territory affected; (2) that the land described herein abuts on the city limits and is suburban in character; and (3) that said land is not now included within the limits of any city, village, or borough.

Section 2. Territory Annexed. The corporate limits of the City are hereby extended to include the platted land described as follows and the same is hereby annexed to and included within the city as effectually as if it had originally been a part hereof:

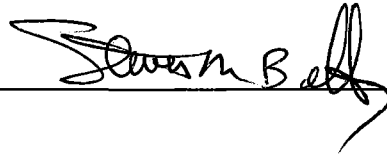
Lots Five (5) and Six (6), Block Six (6), Berg's Subdivision and Lot One (1), Block One (1), Berg's Second Subdivision.

Section 3. Filing. The City Clerk is hereby directed to file copies of this Ordinance with Minnesota Planning, Copley Township, Clearwater County Auditor, and the Secretary of State.

JUN 26 2003

Section 4. Effective Date. This ordinance takes effect upon its passage and publication, the filing of the copies as directed in Section 3, and approval by Minnesota Planning.

Adopted by the Council this 8th day of April, 2003.



Mayor

(S E A L)

Attest:

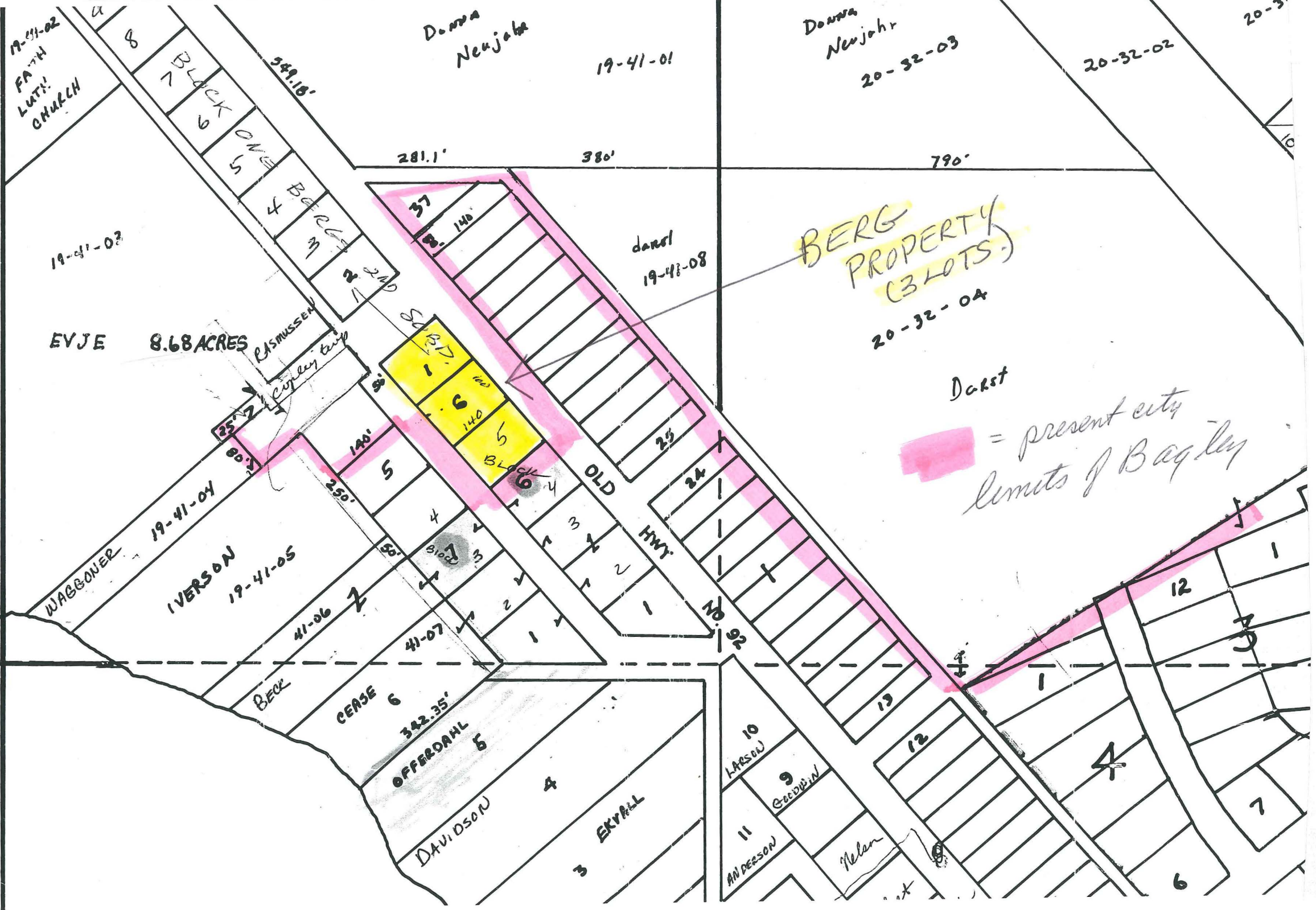


City Clerk/Treasurer

Published in the Farmer's Independent this 7th day of May, 2003.

REC'D BY
M.M.B.
FEB 26 2003

REC'D BY
M.M.B.
DEC 03 2002



BERG
PROPERTY
(3 LOTS.)
20-32-04

Dakst
= present city
limits of Bagley