

REC'D BY  
MMB

DEC 09 2002

## ORDINANCE NO. 11, SECOND SERIES

AN ORDINANCE OF THE CITY OF TWO HARBORS, MINNESOTA  
ANNEXING LAND LOCATED IN THE UNORGANIZED TOWNSHIP NO. 2,  
LAKE COUNTY, PURSUANT TO MINN. STAT. 414.033, PERMITTING  
ANNEXATION BY ORDINANCE

WHEREAS, the real estate described below is not presently within the corporate limits of any incorporated city; and

WHEREAS, this real estate abuts upon the corporate limits of the City of Two Harbors;

WHEREAS, this real estate is presently unoccupied and unpopulated that was in the past used for industrial purposes and consists of approximately 12.23 acres; and

WHEREAS, this real estate is owned by the City of Two Harbors and is about to be urban or suburban in character and the annexation is required to protect the public health, safety and welfare and is in the best interests of the property proposed for annexation;

THE CITY COUNCIL OF THE CITY OF TWO HARBORS, MINNESOTA HEREBY ORDAINS:

SECTION 1. Real Estate Annexed. The corporate limits of the City of Two Harbors are hereby extended to include the property described below, now owned by the City:

See Exhibit A.

SECTION 2. Filing Copies. The City Administrator is directed to file copies of this ordinance with the County Auditor of Lake County, the Town Clerk of the Unorganized Township No. 2, and Minnesota Planning - Boundary Adjustment.

SECTION 3. Purpose and Intent. The purpose and intent of this Ordinance is to annex the real property to the corporate limits of the City of Two Harbors for the purposes set forth in the whereas clauses to this Ordinance.

SECTION 3. Effective Date of Annexation. This ordinance shall be effective (a) thirty (30) days after (1) its passage and (2) approval by the Mayor and (b) its publication once in the legal newspaper for the City of Two Harbors and (c) the filing of the copies as directed in Section 2 and (d) the approval by Minnesota Planning's Municipal Boundary Adjustments Office.

ADOPTED, this 9<sup>th</sup> day of September, A.D., 2002.

REC'D BY  
MMB

DEC 09 2002

/s/ Paul E. Baumann  
President, City Council

ATTEST: /s/ Lee A. Klein  
Administrator

APPROVED, by the Mayor of the City of Two Harbors this 10<sup>th</sup> day of September,  
2002.

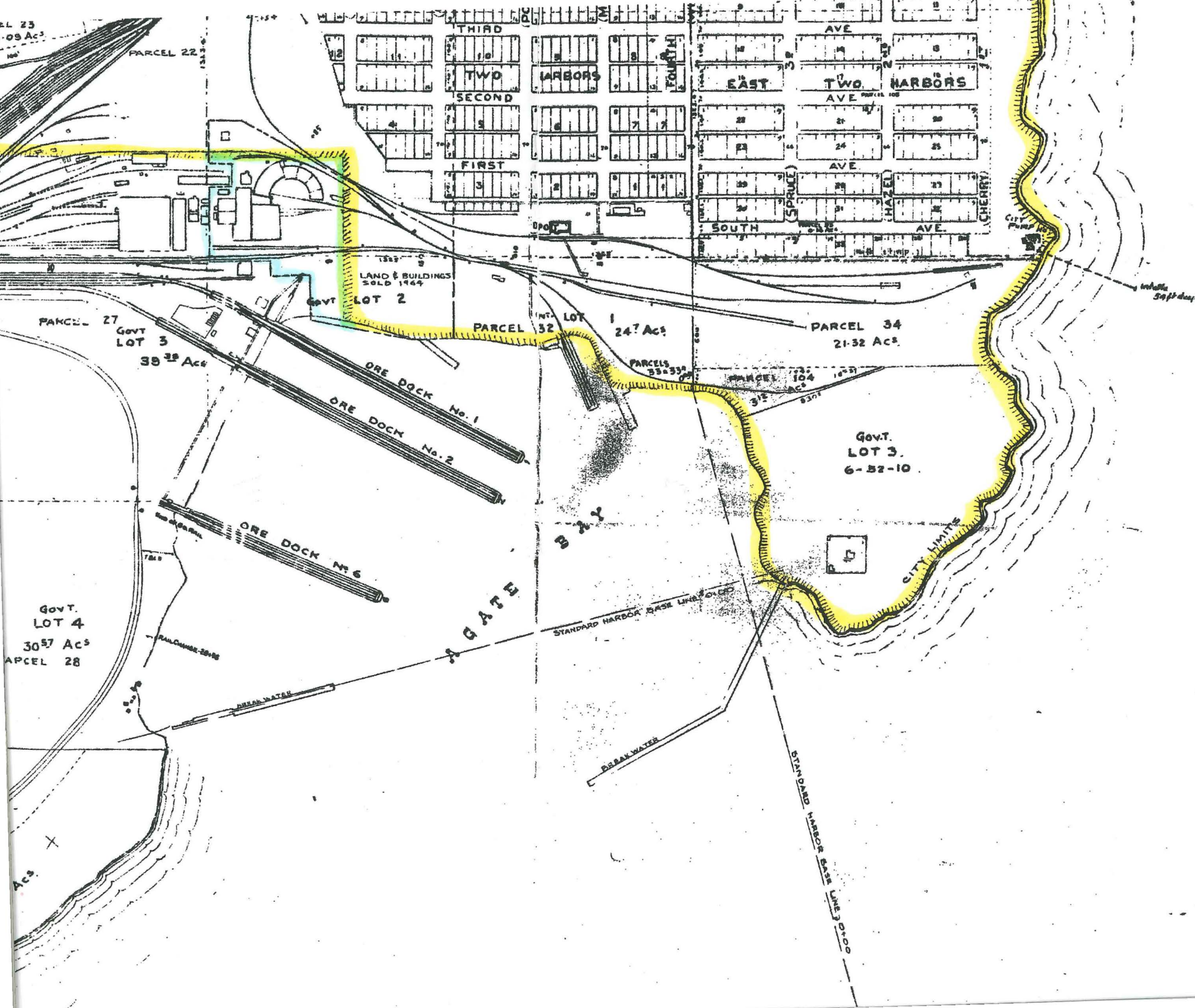
/s/ Robin M. Glaser  
Mayor

REC'D BY  
MAM

DEC 09 2002

EXHIBIT A

In the State of Minnesota, Lake County, Section One(1), Township Fifty-two (52), Range Eleven (11), that part of Government Lot Two (2) as described in Book Fifty-six (56) of Deeds, Page 563 in the Office of the Recorder in said County, and except that part located within the City Limits of the City of Two Harbors.



 - City Limits

 - Annexation Property

L  
A  
K  
E