

MAY 31 2002

ORDINANCE NO. 71 2nd Series

AN ORDINANCE EXTENDING THE CORPORATE LIMITS OF THE CITY OF SLEEPY EYE TO INCLUDE CERTAIN PLATTED LAND ABUTTING UPON THE CITY LIMITS.

WHEREAS, a petition dated April 25, 2002, requesting annexation of the territory hereinafter described is duly presented to the Council, and

WHEREAS, the quantity of land embraced within the area described in the petition is approximately .703 of an acre, more or less, no part of which is included within the limits of an incorporated city; and

WHEREAS, the petition was signed by all of the property owners in number, for the track to be annexed; and

WHEREAS, the land described in the petition abuts upon the City Limits and is urban or suburban in character.

NOW, THEREFORE, the City of Sleepy Eye does ordain as follows:

SECTION ONE. The City Council hereby determines that the annexation will be to the best interest of the City and of the territory affected, that the territory described herein abuts upon the City Limits and is urban or suburban in character, and that none of said territory is now included within the limits of any city and does not abut upon the limits of any other city.

SECTION TWO. The corporate limits of the City are hereby extended to include the platted land described as follows, and the same is hereby annexed to and included within the City as effectually as if it had originally been a part hereof:

North 232 feet of Lot F of NW $\frac{1}{4}$ of NE $\frac{1}{4}$,
Section 32, Twp. 110, Range 32, Brown
County, Minnesota.

SECTION THREE. The City Clerk has been directed to file certified copies of this Ordinance with Minnesota Planning, Secretary of State, the Home Township Clerk and the County Auditor-Treasurer.

REC'D BY
MMB

MAY 31 2002

SECTION FOUR. This Ordinance takes effect upon its passage and publication and the filing of the certified copies as directed in Section Three and approval of Minnesota Planning.

Passed by the City Council for the City of Sleepy Eye, Minnesota, on May 14, 2002.

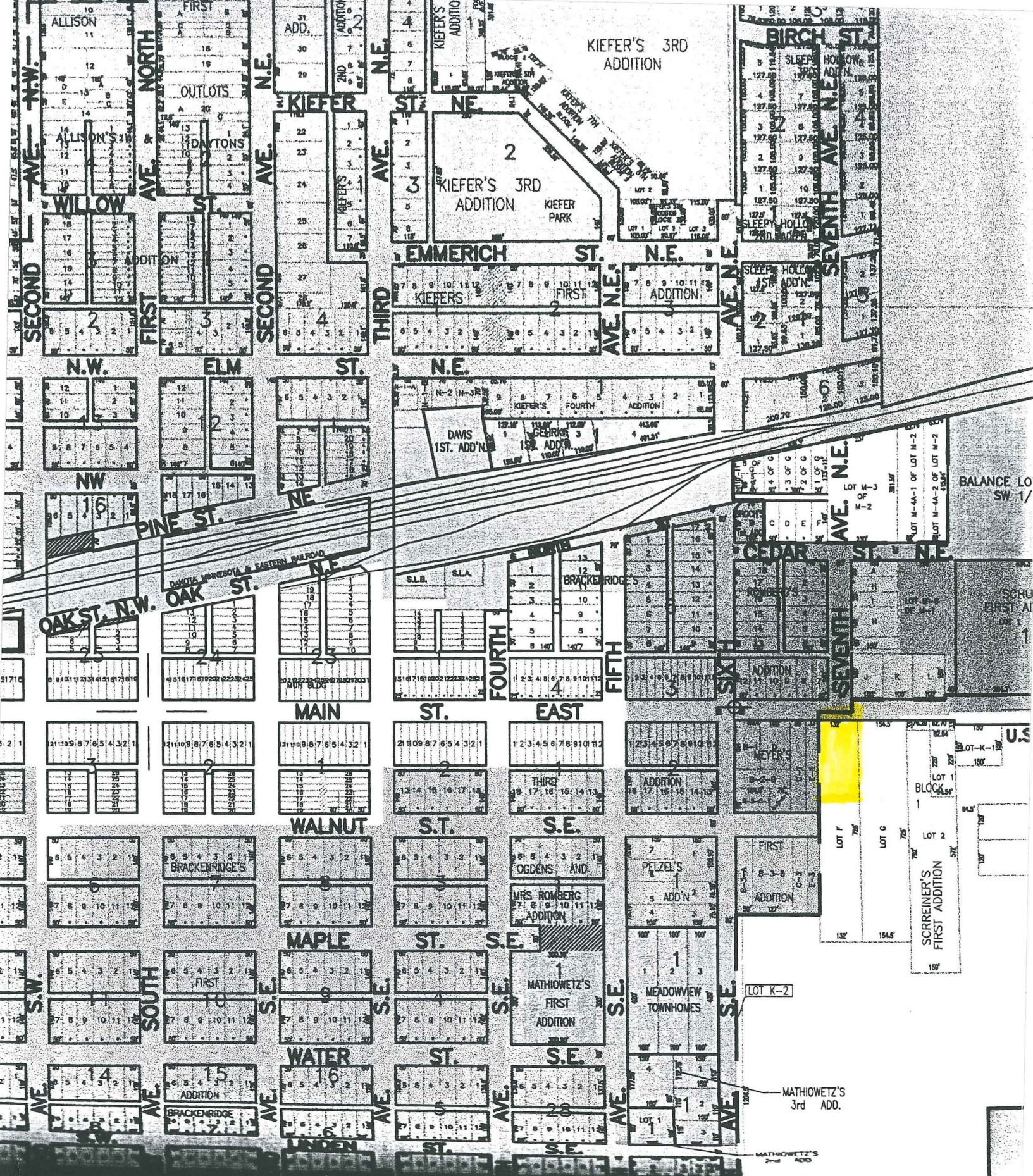

James J. Broich, Mayor

I hereby certify and attest that the City Council of the City of Sleepy Eye, Minnesota, did pass the above Ordinance on May 14, 2002, in accordance with the Charter Provisions and state laws provided therefor.

Dated: May 14, 2002.


Judith K. Ristau, City Clerk

Published in the Sleepy Eye
HERALD DISPATCH, Sleepy Eye,
Minnesota, on May 23, 2002,
2002.



REC'D BY
MMB

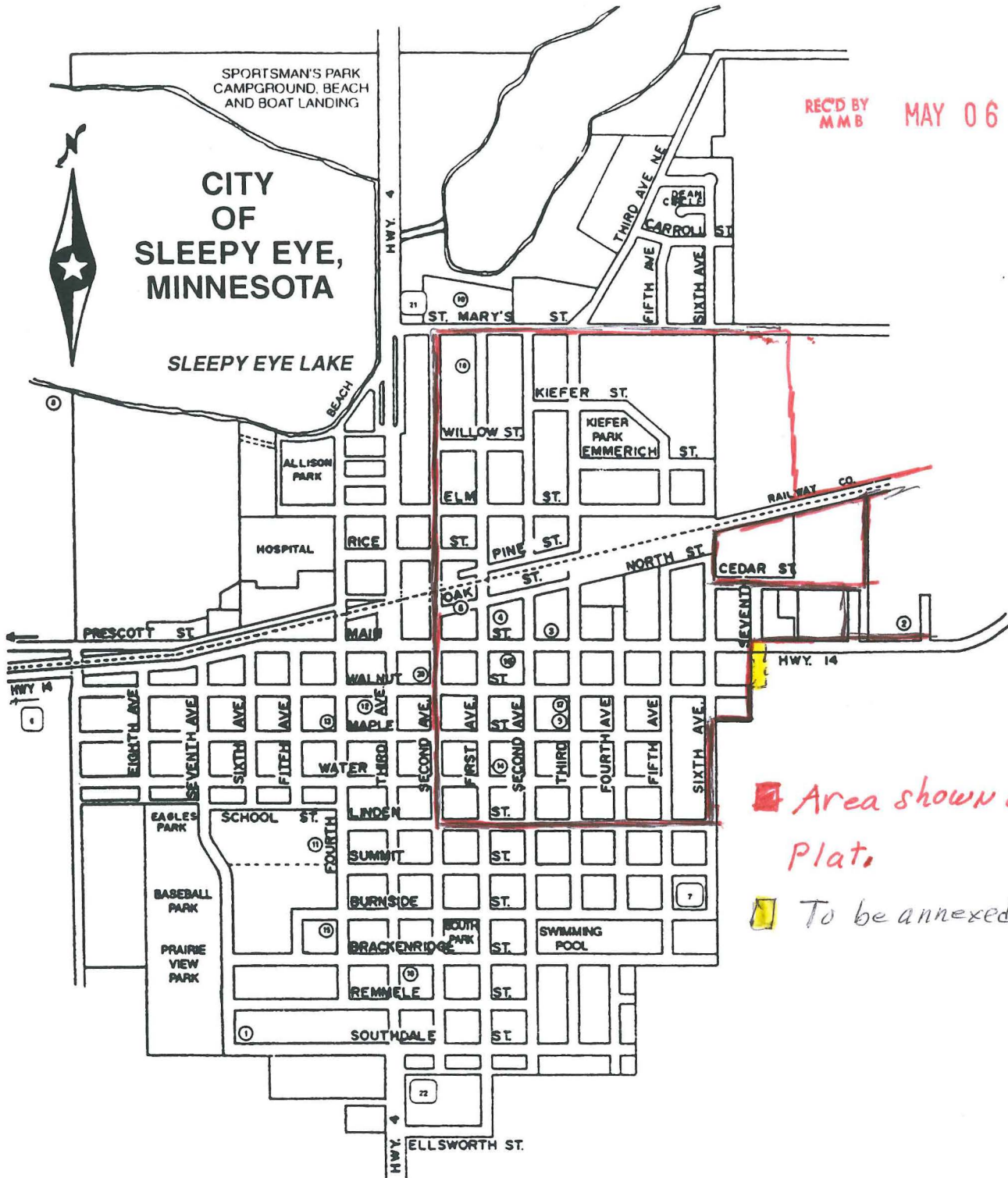
MAY 06 2002

REC'D BY
MMB

MAY 06 2002

CITY
OF
SLEEPY EYE,
MINNESOTA

SLEEPY EYE LAKE



Area shown on other
Plat.

To be annexed