

**City of Big Lake
Sherburne County, Minnesota
Ordinance No. 2001-12**

**An Ordinance Extending the Corporate Limits of the
City of Big Lake to Include Certain Unincorporated Unplatted
Land Not Exceeding 60 Acres in Area Abutting upon the City Limits**

A petition dated October 15, 2001 requesting annexation of the territory hereinafter described was duly presented to the Big Lake City Council on the 14th day of November, 2001; and

The quality of land within the area described in the petition and bounded as described is 40 acres more or less of unplatted land, no part of which included is included within the limits of an incorporated city or statutory city; and

The petition was signed by the owner(s) of said territory; and

No objections to the annexation have been received from the Big Lake Town Board, Sherburne County Board, or the governing body of any municipality whose boundaries abut upon the boundaries of the land to be annexed, and

The land described in the petition abuts upon the City limits at the southerly boundary thereof, the Council of the City of Big Lake, Minnesota ordains

SECTION 1. The City Council hereby determines (1) that the annexation will be to the best interests of the City and of the territory affected; (2) that the territory described herein abuts upon the city limits and (3) that none of said territory is now included within the limits of any city or statutory city.

SECTION 2. TERRITORY ANNEXED. The corporate limits of the City of Big Lake are hereby extended to include the unplatted land described in Exhibit A, attached hereto, and the same is hereby annexed to and included within the City as effectually as if it had originally been a part thereof; the territory to be annexed consists entirely within the town of Big Lake, County of Sherburne, State of Minnesota, and the description of such lands is attached hereto as Exhibit A.

SECTION 3. FILING. The City Clerk is hereby directed to file certified copies of this ordinance with the Municipal Boundary Adjustment Division of the Office of Strategic and Long-Range Planning , Office, the Secretary of State, and the County Auditor.

SECTION 4. This ordinance is to take effect upon its passage and publication and the filing of the certified copies as directed in Section 3.

Approved by the Big Lake City Council this 14th day of November, 2001.

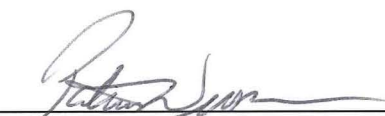
CITY OF BIG LAKE

By:


Don Orrock, Mayor

ATTEST:

By:


Patrick Wussow, City Administrator

Drafted By:
Northwest Associated Consultants Inc.
5775 Wayzata Boulevard
Suite 555
St. Louis Park, MN 55416

REC'D BY
MMB

DEC 06 2001

EXHIBIT A

LEGAL DESCRIPTION:

The Southwest Quarter of the Southeast Quarter (SW $\frac{1}{4}$ of SE $\frac{1}{4}$) in Section 30, Township 33, Range 27, Sherburne County, Minnesota.

Area = approximately 40 acres.

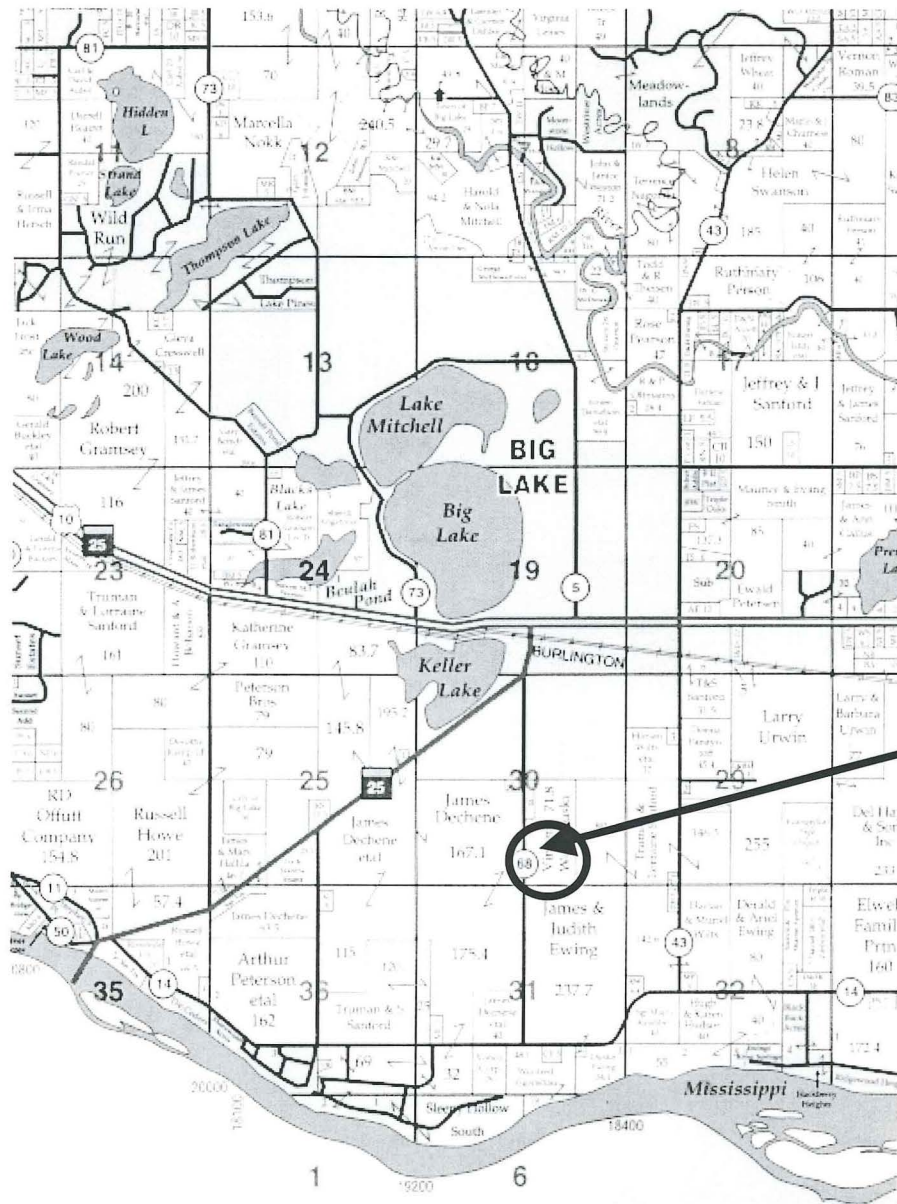


Exhibit B

**Wojchouski
Annexation Site
40 ac.**

Big Lake, MN