

REC'D. BY  
MMB OCT 10 2000

ORDINANCE NO. 091800-1

ORDINANCE EXTENDING THE CORPORATE LIMITS OF THE CITY OF  
MAHNOMEN TO INCLUDE CERTAIN UNINCORPORATED, UNPLATTED  
LAND NOT EXCEEDING 200 ACRES IN AREA ABUTTING UPON THE  
CITY LIMITS

WHEREAS, a certain Petition dated May 11, 2000, signed by John B. Buckanaga, Chairman, and Erma J. Vizenor, Secretary-Treasurer of the White Earth Band of Chippewa Indians, requesting annexation of the territory hereinafter described was duly presented to the City Council of the City of Mahnomen on September 18, 2000; and

WHEREAS, the Petition was signed by all the owners of the real estate involved, thereby complying with the provisions of Minn. Stat. §414.033, Subd. 2(3); and

WHEREAS, no objections to the annexation have been received from the town board or the governing body of any municipality whose boundaries abut upon the boundaries of the land to be annexed; and

WHEREAS, a hearing was duly held by the governing body of the City of Mahnomen, Minnesota, on the proposed annexation after at least 30 days mailed notice; and

WHEREAS, the land described in the Petition abuts upon the existing City limits at the southerly boundary thereof;

The Council of the City of Mahnomen, Minnesota, ordains:

**Section 1.** The City Council hereby determines (1) that the territory described herein abuts upon the city limits and is about to become urban or suburban in character; and (2) that none of the territory is now included within the limits of any city.

**Section 2.** The population of the territory is zero (0).


**Section 3. Territory annexed.** The corporate limits of the city are hereby extended to include the unplatted land described as follows and the same is hereby annexed to and included within the city as effectually as if it had originally been a part hereof:

The Southwest Quarter of the Northeast Quarter (SW1/4 NE1/4), Section Eleven (11), Township One Hundred Forty-four (144) North, Range Forty-two (42) West.


**Section 4. Filing.** The City Clerk is hereby directed to file certified copies of this ordinance with the Minnesota Municipal Board, the Secretary of State, the Town Clerk, and the County Auditor.

**Section 5. Effective Date.** This ordinance takes effect upon its passage and publication and the filing of the certified copies as directed in Section 3, and approval of the ordinance by the Minnesota Municipal Board.

Adopted by the City Council of the City of Mahanomen this 18<sup>th</sup> day of September, 2000.

  
Darvin Schoenborn, Mayor

ATTEST:

  
Dean M. Johnson, City Administrator



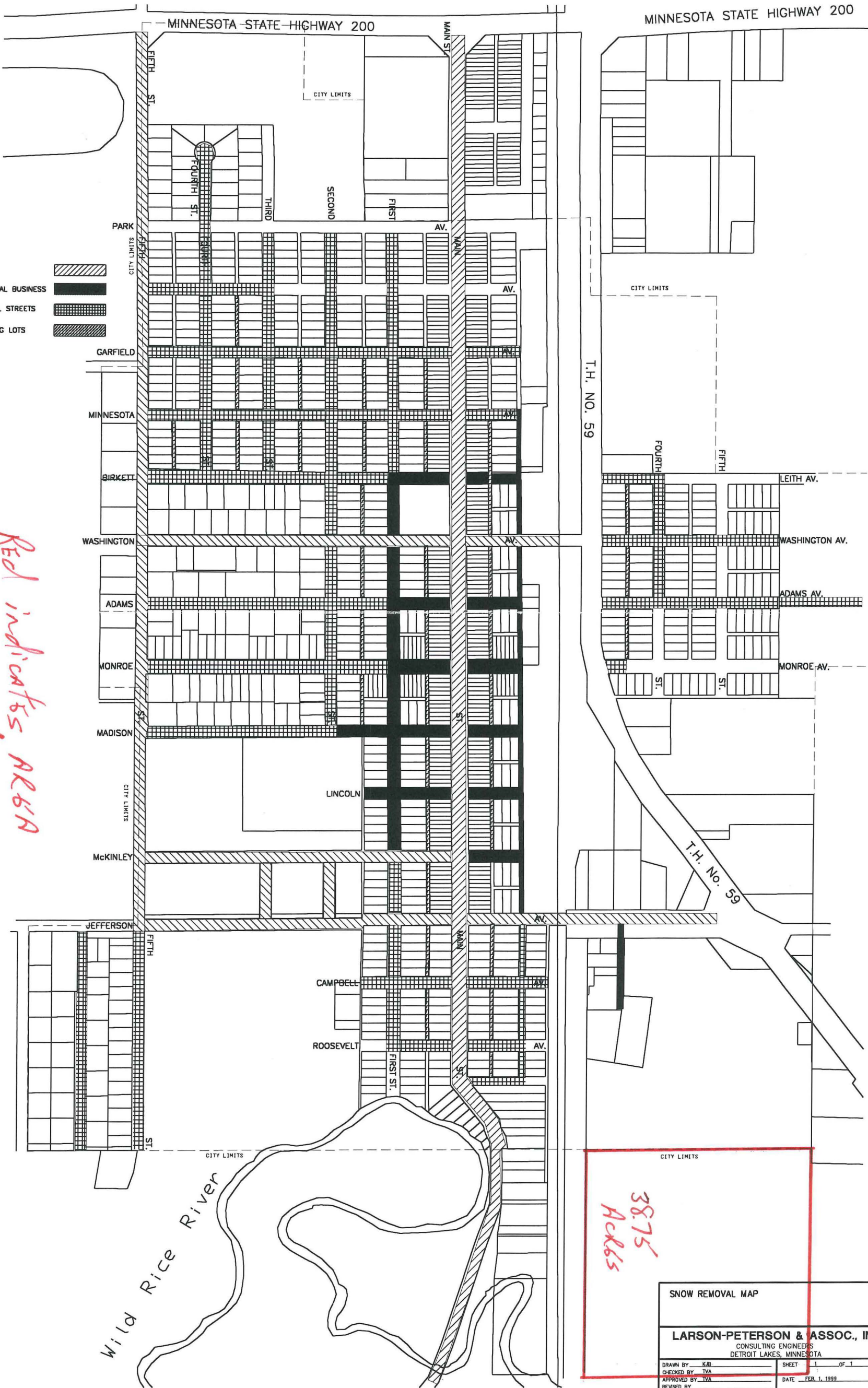
# CITY OF MAHNOMEN SNOW REMOVAL MAP

- No. 1 - MAIN EMERGENCY ROADS
- No. 2 - SCHOOLS AND COMMERCIAL BUSINESS
- No. 3 - LOW VOLUME RESIDENTIAL STREETS
- No. 4 - ALLEYS AND CITY PARKING LOTS



Red indicates AREA  
to be removed.  
38.75 ACRES.

REC'D BY OCT 10 2000  
M.M.P.



|  |                     |
|--|---------------------|
| SNOW REMOVAL MAP   |                     |
| LARSON-PETERSON & ASSOC., INC.<br>CONSULTING ENGINEERS<br>DETROIT LAKES, MINNESOTA |                     |
| DRAWN BY: KJB  | SHEET 1 OF 1 SHEETS |
| CHECKED BY: TVA  | DATE: FEB. 1, 1999  |
| APPROVED BY: LVA   | FILE NO.: 99-MAH-02 |
| REVISED BY:  |                     |