

ORDINANCE NO. 148

AN ORDINANCE EXTENDING THE CORPORATE
LIMITS OF THE CITY OF BAGLEY

WHEREAS, A petition extending the corporate limits of the City of Bagley was presented to the City Council on July 20, 2000; and

WHEREAS, These proceedings are authorized under Minnesota Statutes 414.033.

WHEREAS, the quantity of land embraced within the area described in the Petition is approximately .65 acres of platted land, and whereas the land described in the Petition abuts the City limits of Bagley on the northwest boundary thereof,

NOW THEREFORE, The City Council of Bagley, Minnesota, ordains:

Section 1. The City Council hereby determines (1) that the annexation will be in the best interests of the City and of the territory affected; (2) that the land described herein abuts on the city limits and is suburban in character; and (3) that said land is not now included within the limits of any city, village, or borough.

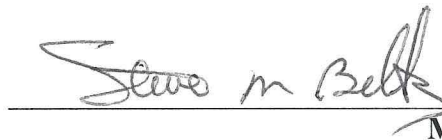
Section 2. Territory Annexed. The corporate limits of the City are hereby extended to include the platted land described as follows and the same is hereby annexed to and included within the city as effectually as if it had originally been a part hereof:

Lots Five (5), Six (6), Seven (7) and Eight (8), Block One (1), Dawn Acres, together with any abutting platted streets or alleys.

Section 3. Filing. The City Clerk is hereby directed to file certified copies of this Ordinance with the Minnesota Municipal Board, Copley Township, the Clearwater County Auditor, and the Secretary of State.


Section 4. Effective Date. This ordinance takes effect upon its passage and publication, the filing of the certified copies as directed in Section 3, and approval by the Minnesota Municipal Board.

Adopted by the Council this 29th day of August, 2000.


Mayor

(S E A L)

Attest:


City Clerk

Published in the Farmer's Independent this 6th day of September, 2000.

S

M

AND THAT
I FURTHER
THAT ALL
FOR GUID
GROUND
ON THE PL
DESIGNA

STATE OF
COUNTY OF

I HEREBY
COUNTY M.
COMMISSION

NW 1/4 SW 1/4
SEC. 20

SW 1/4 SW 1/4
SEC. 20

REC'D. BY SEP 12 2000
MAB

Plat of
Del Lynn
Acres.

City

03-305-

50' 17

50' 16

50' 15

50' 14

40' 13

30' 12

40' 11

50' 10

50' 9

50' 8

50' 7

50' 6

50' 5

50' 4

50' 3

50' 2

50' 1

45' 1

DAWN
ACRES

ONE

0010

0021

ALLEY

BLOCK ONE
NEUTAHRS

OLD

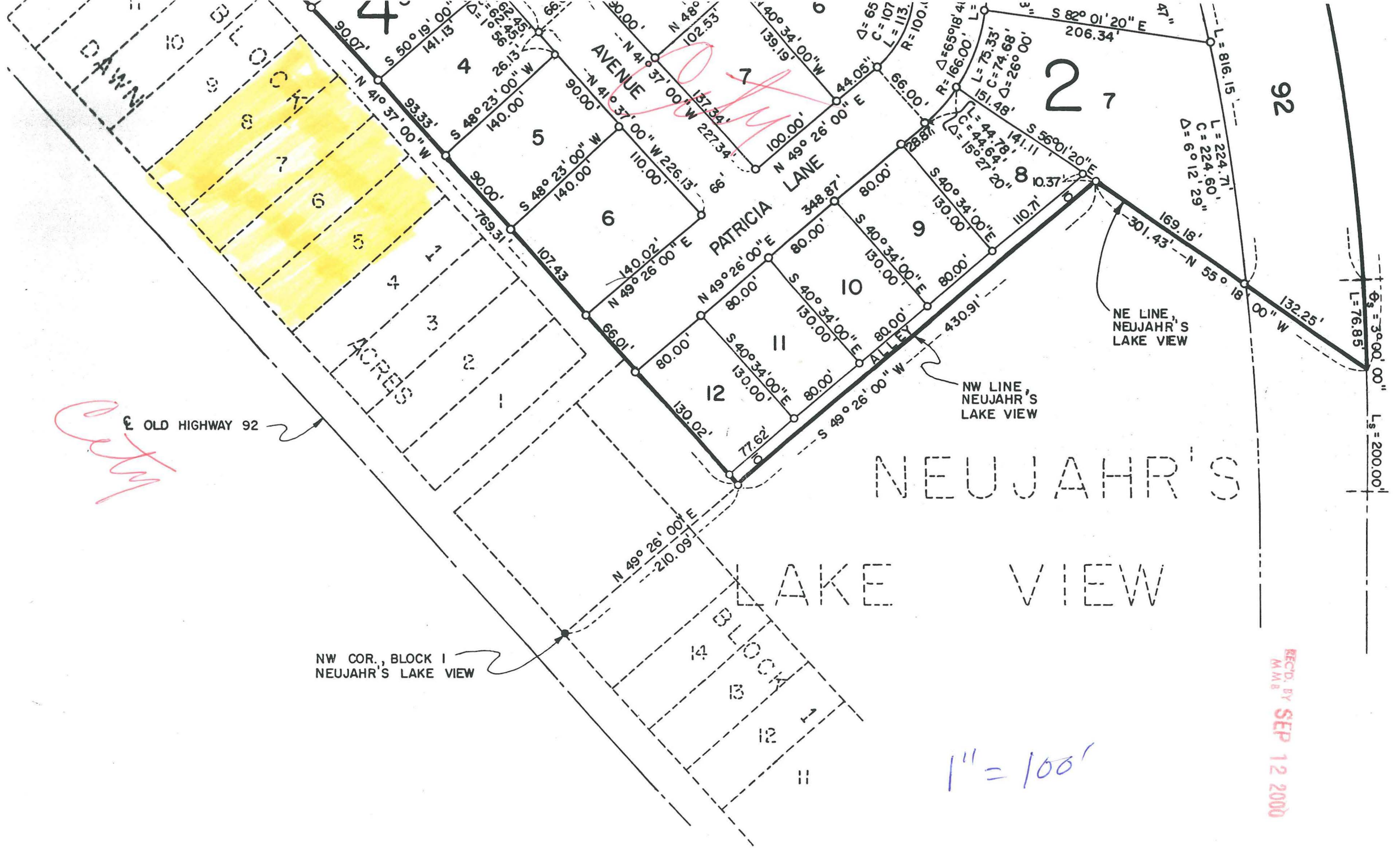
T.H.

Nº

92

R/W LINE

City



City

OLD HIGHWAY 92

NW COR., BLOCK 1
NEUJAHR'S LAKE VIEW

NEUJAHR'S
LAKE VIEW

1" = 100'

REC'D. BY SEP 12 2000
M.M.B.

I h
of
in
des

STA
COU
The

BAG
The
hel

No

Do