

**CITY OF CASS LAKE**  
**ORDINANCE NO. 25, 3RD SERIES**

An ordinance annexing Reiplinger (Highland Inn) property  
to the corporate limits of the City of Cass Lake

**WHEREAS**, certain properties, described below, are not presently included in the corporate limits of any incorporated city, village, or borough; and

**WHEREAS**, pursuant to M.S. 414.033, Subd. 2(3), the owner of said described properties have petitioned the City of Cass Lake for annexation of such properties; and

**WHEREAS**, the properties are located adjacent to existing City boundaries; and

**WHEREAS**, the total area is 13.76 acres and is urban or suburban in character or about to become so; and

**WHEREAS**, there are two (2) persons residing on the properties; and

**WHEREAS**, the legal description of the property is as follows:

**Sect-10, Twp-145.0, Range-31; part of NE 1/4 of SW 1/4 and that part of Govt. Lot 3, Sect.-10, Twp.-145.0, Range-31; Sect.-10, Twp.-145.0, Range-31, part of NE SW, Cass County, Minnesota.**

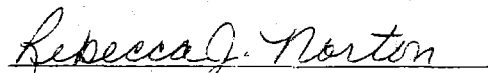
**NOW, THEREFORE**, the Council of the City of Cass Lake hereby ordains that the corporate limits of the City of Cass Lake are hereby extended to include land as described, and the same is hereby annexed and included within the City of Cass Lake as effectively as if it had originally been a part thereof.

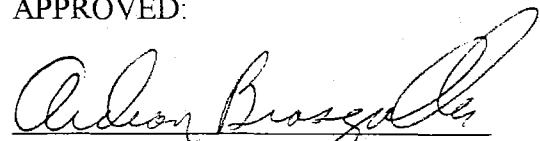
The City Clerk is hereby directed to file certified copies of this Ordinance with the Minnesota Municipal Board, the Cass County Auditor, the Pike Bay Township Board, and the Secretary of State.

This Ordinance shall become effective thirty (30) days after its passage, due publication thereof, and approval by the Minnesota Municipal Board.

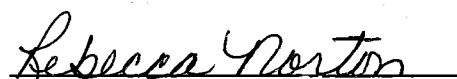
ATTEST:

APPROVED:

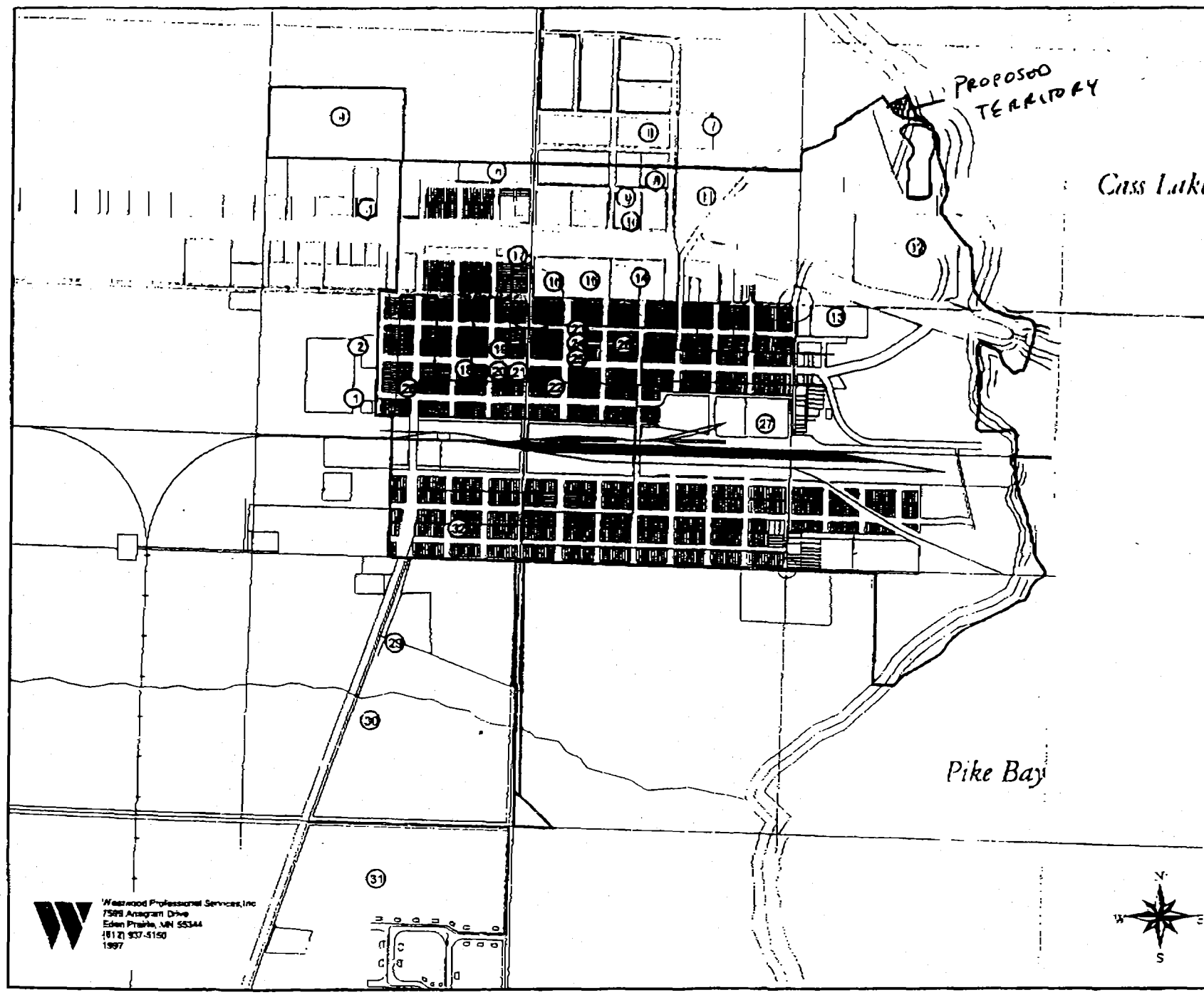
  
Rebecca J. Norton, City Clerk

  
Ardean Braggalla, Mayor

I do hereby certify the foregoing is a true and correct copy of an Ordinance duly introduced and passed by the Cass Lake City Council on December 23, 1998.

  
Rebecca Norton, City Clerk

W  
E  
S  
T  
W  
O  
O  
D  
P  
R  
O  
F  
E  
S  
S  
I  
O  
N  
A  
L  
S  
E  
R  
V  
I  
C  
E  
S  
I  
N  
C  
.



**W** Westwood Professional Services, Inc.  
7509 Anagram Drive  
Eden Prairie, MN 55344  
(612) 937-5150  
1997