

ORDINANCE NO. LC 31296

AN ORDINANCE EXTENDING THE CORPORATE LIMITS OF THE CITY OF LE CENTER TO INCLUDE CERTAIN UNINCORPORATED PROPERTY OWNED BY AND ABUTTING UPON THE LIMITS OF THE CITY.

WHEREAS, the territory described below is not presently within the corporate limits of any incorporated city; and

WHEREAS, this territory abuts upon the corporate limits of the city of Le Center at the west boundary thereof and is deemed to be urban or suburban in character; and

WHEREAS, this territory is owned in fee by the city;

The City Council of Le Center ordains:

Section 1. **Territory Annexed.** The corporate limits of the city of Le Center are hereby extended to include the unplatted property described as follows, now owned by the city: The Northeast 1/4 of the Northwest 1/4 of Section 33-111-24, Le Sueur County, Minnesota, except that part described as follows: Beginning at the Northeast corner of said Northeast 1/4 of Northwest 1/4, thence North 89 degrees 59 minutes 43 seconds West along the North line of said Northeast 1/4 of Northwest 1/4 632.00 feet; thence South 00 degrees 52 minutes 04 seconds East 435.65 feet; thence South 89 degrees 59 minutes 43 seconds East 632.00 feet to the West line of said Northeast 1/4 of Northwest 1/4; thence North 00 degrees 52 minutes 04 seconds West along said West line of Northeast 1/4 of Northwest 1/4 435.65 feet to the point of beginning. (Said containing 34 acres, more or less)

Section 2. **Filing.** The city clerk is directed to file certified copies of this ordinance with the Secretary of State, the County Auditor of the county in which the property is located, the Town Clerk of the affected township and the Minnesota Municipal Board.

REC'D. BY MAR 20 1996  
M.A.P.

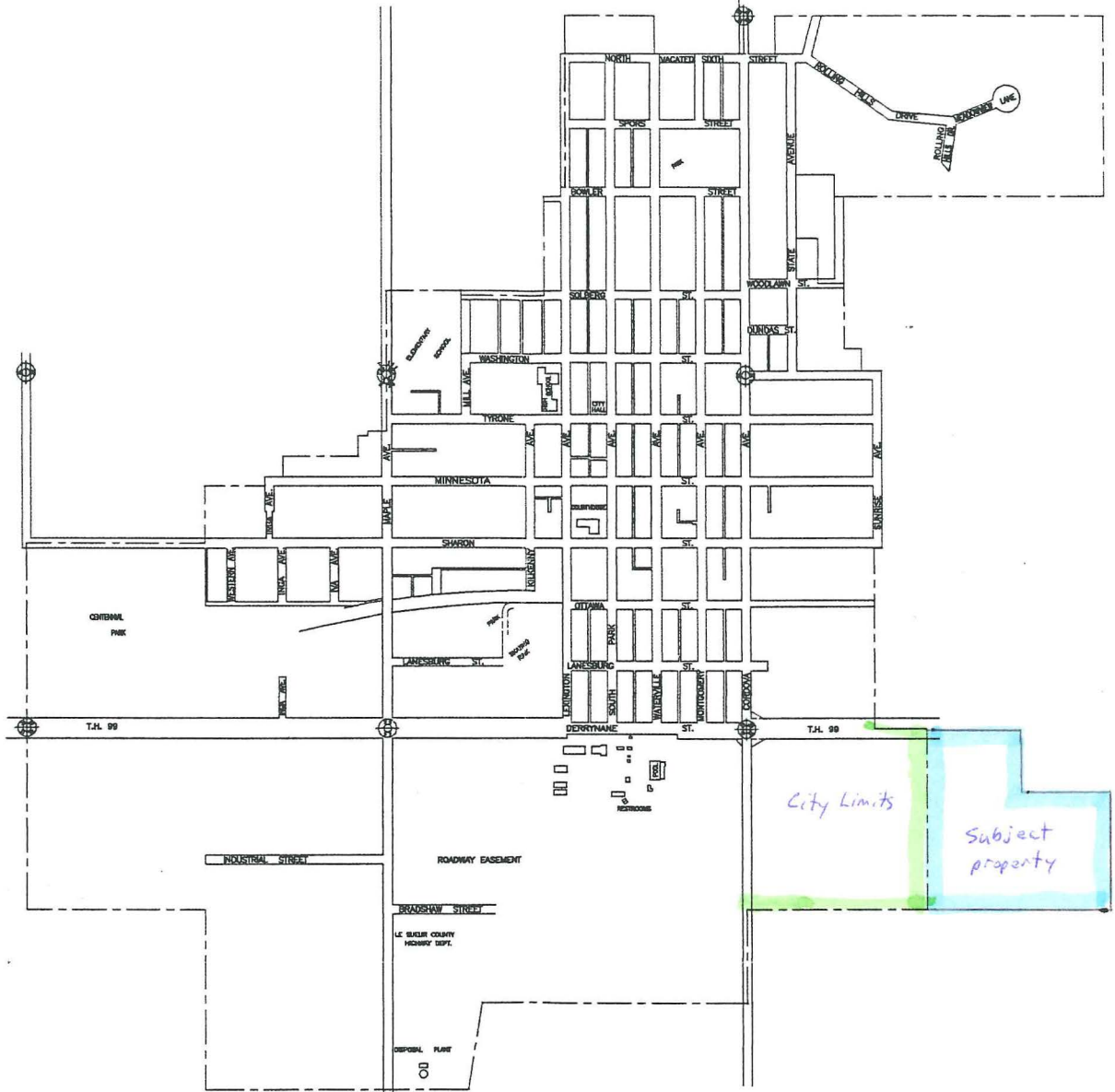
Section 3. **Effective date of annexation.** This ordinance takes effect upon its passage by the city of Le Center, the filing of copies as directed in Section 2, and approval by the Minnesota Municipal Board.

Adopted by the city of Le Center, Minnesota, this 12<sup>th</sup> day of March, 1996.

Attest:

  
City Clerk

  
Mayor



RECEIVED BY **MAR 21 1996**  
M M R



0 1000 2000  
SCALE IN FEET

**BOLTON & MENK, INC**  
CONSULTING ENGINEERS & SURVEYORS  
BURNSVILLE, MN AMES, IA  
FAIRMONT, MN MANKATO, MN SLEEPY EYE, MN

CITY OF LE CENTER, MINNESOTA  
CITY BLOCK MAP  
1996

