

REC'D. BY  
MMR JUL 27 1995

ORDINANCE NO. 114

AN ORDINANCE EXTENDING THE CORPORATE LIMITS OF THE CITY OF BROOTEN TO INCLUDE CERTAIN LAND OWNED BY THE CITY OF BROOTEN AND ABUTTING ITS CITY LIMITS.

THE CITY COUNCIL OF BROOTEN, MINNESOTA, ORDAINS:

Section 1. Recitals.

(a) On June 26, 1995, the Brooten City Council (the "Council") gave final approval to and on July 13, 1995, the City executed that certain Plat (the "Plat") of the "Brooten Industrial Park" (the "Industrial Park"), and it has been determined that a portion of that Plat lies within the corporate limits of the City but that the remainder of that Plat (which remainder is hereinafter referred to as the "Annexation Property") lies outside of the City. A somewhat lengthy metes and bounds description of the Annexation Property is on file and available for public inspection at the office of the Brooten City Clerk-Treasurer and is incorporated into this Ordinance with the same force and effect as though set forth in full herein at this point.

(b) The City Council believes it to be in the best interest of the City, in part in order to facilitate the improvement and completion of the Industrial Park, both public and private, to provide for needed streets and public utilities therein, to facilitate the establishment of a certain tax increment financing district for and the completion of the Northern Lights Frozen Foods project, and/or to allow for the Plat to be filed in the appropriate Stearns County offices, that all of the property within that Plat, including the Annexation Property, be included as a part of the City and that the Annexation Property be annexed thereto.

(c) Pursuant to the receipt of a certain deed or deeds, as of the date of approval of this Ordinance, the City owns all of the Annexation Property.

(d) The City Council hereby determines that the Annexation Property is urban in character or about to become so and consists of approximately 36.3 acres, and abuts the current corporate limits of the City on several sides.

Section 2. Annexation by Ordinance. Pursuant to Minnesota Statutes, Section 414.033, Subdivision 2(1), the corporate limits of the City of Brooten are hereby extended to include the Annexation Property, and said Annexation Property is hereby declared annexed to and included within the City of Brooten and its corporate City limits.

Section 3. Authorization; Publication; Filing. The City Clerk-Treasurer is hereby authorized and directed to take or cause to be taken all steps necessary to implement and

REC'D. BY  
M A R JUL 27 1995

give force and effect to the provisions of this Ordinance, including without limitation the publication forthwith of this Ordinance in the City's official newspaper; the posting of the Ordinance at the public place(s) within the City where ordinances or other public notices of the City are customarily posted; and the filing of a certified copy of this Ordinance with the Minnesota Municipal Board, the Township or Townships within which the Annexation Property has heretofore resided, the Stearns County Auditor and the Minnesota Secretary of State. The City Clerk-Treasurer is further authorized to make application to and to cooperate with the Minnesota Municipal Board for the final approval by that Board of the annexation of the Annexation Property to the City of Brooten, including without limitation the payment of all application fees and other expenses associated therewith and the furnishing to said Board of any additional information required, including a map of the existing corporate limits of the City of Brooten.

Section 4. Effective Date. This Ordinance shall take effect immediately or upon the earliest date pursuant to which this Ordinance may take effect pursuant to applicable law.

Introduced and adopted this 17th day of July, 1995, and approved by the City Council of the City of Brooten, Minnesota, by the following vote of the City Council:

AYES: Lundell, Wahlstrom, TeBrake, Putz, Von Eschen

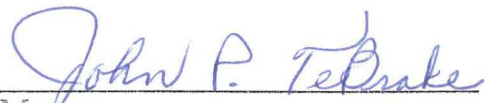
NAYS: None

Approved by the Mayor of the City of Brooten, Minnesota, and attested by its City Clerk-Treasurer on this 17th day of July, 1995.

ATTEST:

APPROVED:

  
\_\_\_\_\_  
City Clerk-Treasurer

  
\_\_\_\_\_  
Mayor

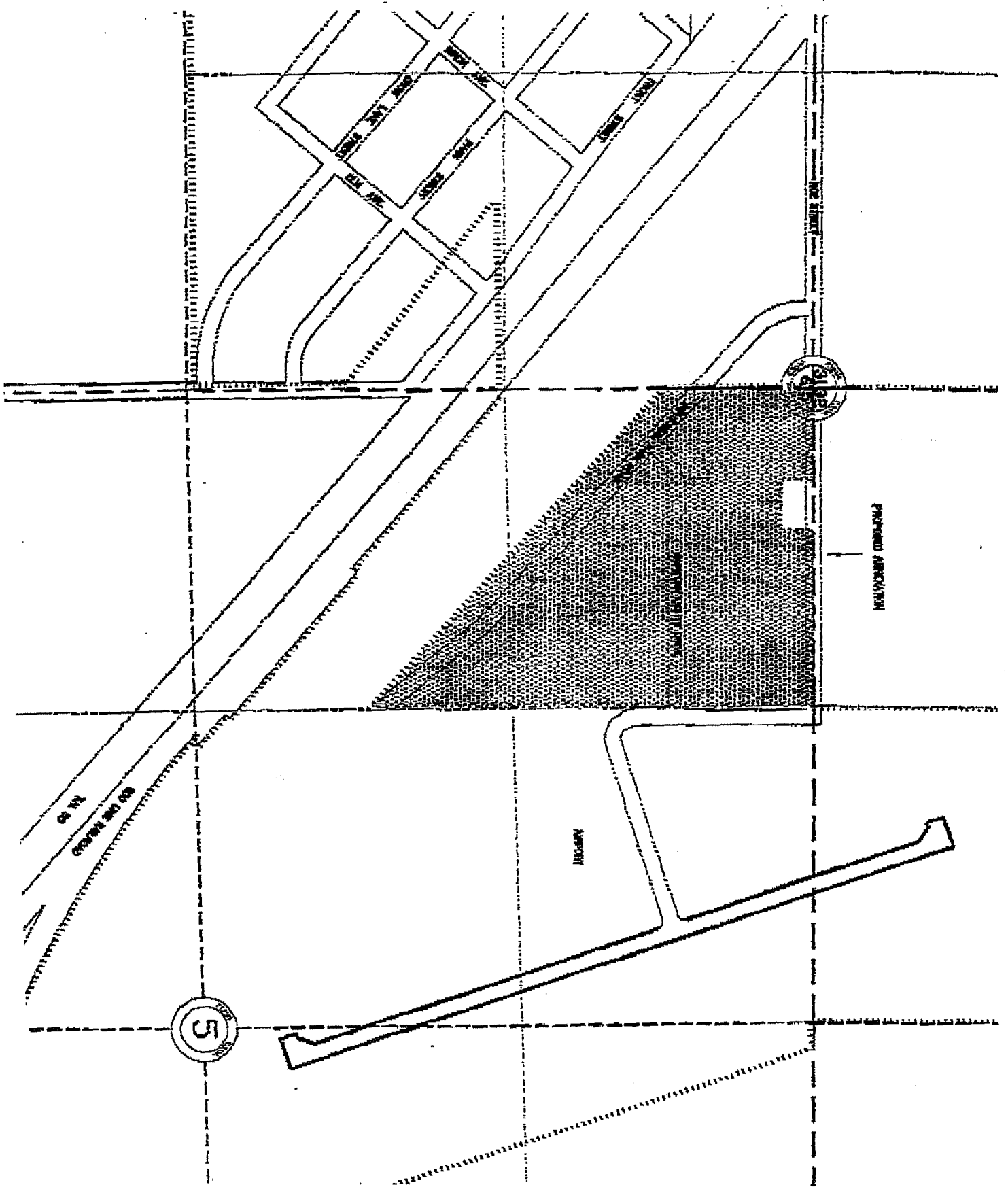
Published in the Bonanza Valley Voice on July 20, 1995.

REC'D. BY  
M M R JUL 27 1995

July 17, 1995

## LEGAL DESCRIPTION FOR THAT PART OF BROOTEN INDUSTRIAL PARK TO BE ANNEXED:

That part of the Northwest Quarter of the Northwest Quarter (NW1/4-NW1/4), and that part of the Southwest Quarter of the Northwest Quarter (SW1/4-NW1/4), Section 5, Township 123 North, Range 35 West, Stearns County, Minnesota, described as follows: Beginning at the iron monument at the northwest corner of said NW1/4-NW1/4; thence South 00 degrees 28 minutes 54 seconds East 613.80 feet along the west line of said NW1/4-NW1/4; thence South 47 degrees 41 minutes 44 seconds East 1810.03 feet to the east line of said SW1/4-NW1/4; thence North 00 degrees 35 minutes 24 seconds West 1832.15 feet along said east line of the SW1/4-NW1/4 and along the east line of said NW1/4-NW1/4 to the northeast corner of said NW1/4-NW1/4; thence West 744.95 feet along the north line of said NW1/4-NW1/4; thence South 200.00 feet; thence West 200.00 feet; thence North 200.00 feet to said north line of the NW1/4-NW1/4; thence West 380.00 feet along said north line of the NW1/4-NW1/4 to the point of beginning. Containing 36.3 acres, more or less.



APPROXIMATE

APPROX

5

5

REC'D BY JUL 27 1995

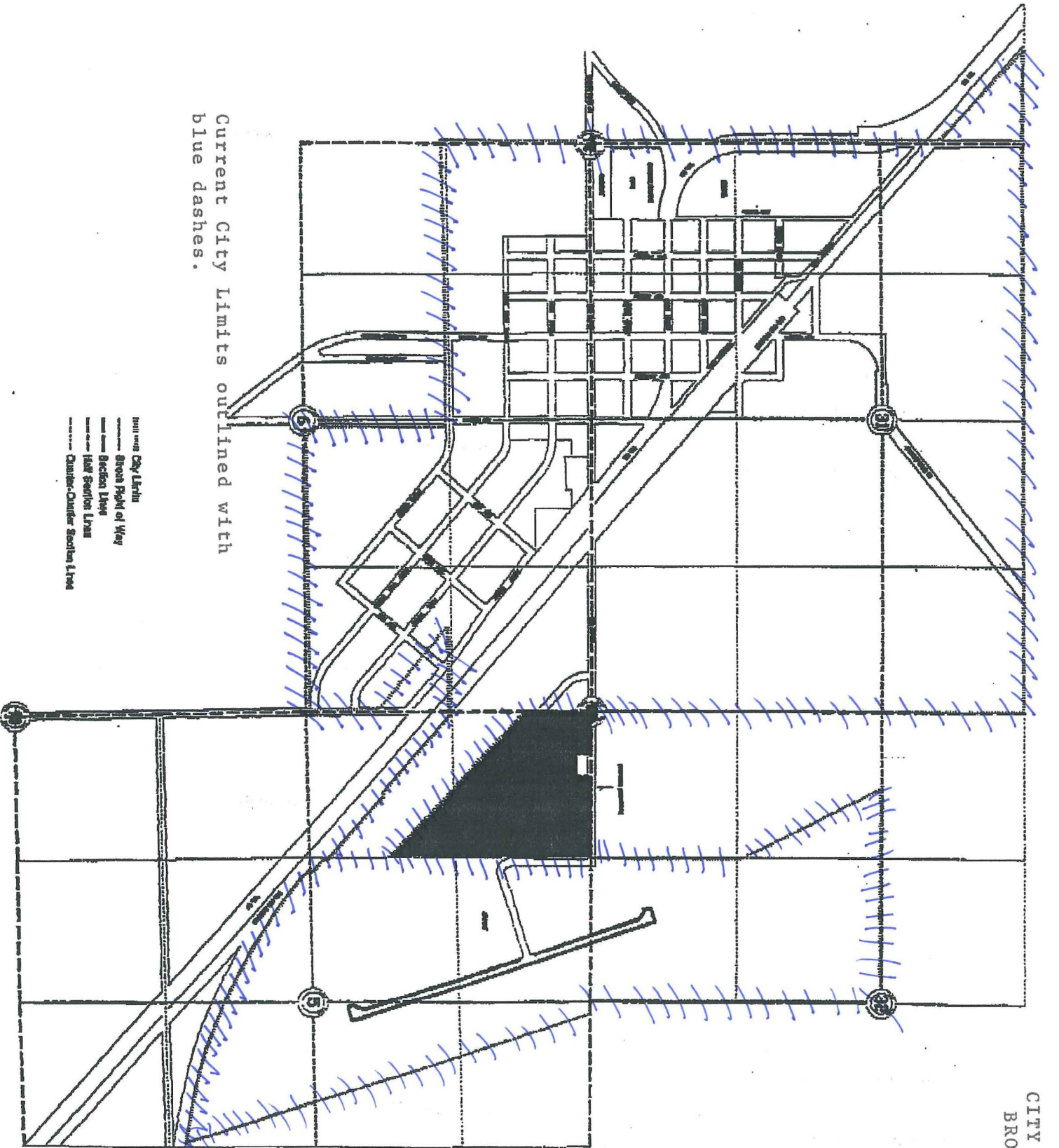
M.M.R.

WSN ALEX

07/26/95 12:16 31 612 762 0263

002

CITY OF  
BROOKEN



Current City Limits outlined with  
blue dashes.

- Full City Limits
- Street Right of Way
- Section Line
- Half Section Line
- Quarter-Quarter Section Line

REC'D. BY JUL 27 1995  
M M R

002 001

+++ ALEX

WSN ALEX WSN BRAINERD

81 612 762 0263  
81 218 828 2517

13:33 14:22

07/26/95 07/20/95