

ORDINANCE NO. 247

AN ORDINANCE ANNEXING CERTAIN
LAND OF THE CITY OF WAITE PARK LYING BETWEEN
ANTON'S SUPPER CLUB AND PARKWOOD 8, ALL IN
STEARNS COUNTY, MINNESOTA

WHEREAS, pursuant to a resolution, the City Council, of and for the City of Waite Park on May 31, 1994, hereby passes this Ordinance to annex certain portions of land to the City of Waite Park which land is completely surrounded by land within the municipal limits and the City of Waite Park is proceeding pursuant to Minn. Stat. § 414.033, Subd. 2(2).

WHEREAS, it has been determined by the Waite Park City Council that the property is about to become urban or suburban in character; and

WHEREAS, it has been determined by the City Council that said annexation will be in the best interest of the City of Waite Park and the above described property.

NOW, THEREFORE, the City Council in and for the City of Waite Park does hereby declare and ordain:

1. That the corporate limits of the City of Waite Park, Stearns County, Minnesota, be and they are hereby extended to include that certain real estate hereinafter described, and the same is hereby annexed and included in the City of Waite Park as effectively as if it had originally been a part thereof.

2. The legal description of the property is as follows:

That portion of the East half of the East Half of the Northeast Quarter ($E\frac{1}{2}$ of $E\frac{1}{2}$ of $NE\frac{1}{4}$) in Section 18, Township 124 North, Range 28 West, lying South of the South shoreline of the Sauk River and lying North of County Road 75 (Old Highway 52) right-of-way which is currently outside the City limits.

The acreage of the land involved is 3.8 acres. The property has a population of seven (7).

IT IS FURTHER ORDAINED, that the City Clerk file certified copies of this Ordinance with the Minnesota Municipal

REC'D BY JUL 29 1994
M M R

Board, the Stearns County Auditor, the Clerk for the Township of St. Cloud, and the Secretary of State for the State of Minnesota.

Adopted by the City Council this 31st day of May, 1994.

CITY OF WAITE PARK

Alcuin J. Ringsmuth
Alcuin J. Ringsmuth, Mayor

ATTEST:

Jeffrey J. Baird
Jeffrey J. Baird, City Clerk

N:\city\waite2\ac072694.251

TRIAL

54

460.15

PARK

1075.8



CITY OF ST. CLOUD

RIVER

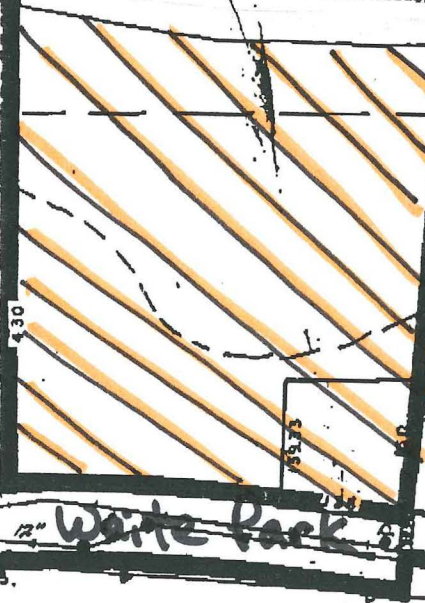
137

126.5

68.89

276.29

Waite Park



Waite Park
BLOCK

PARKWOOD

Waite Park

PARK

3

N O.

7.5



Land to be Annexed

REC'D. BY JUN 13 1994
M M R

Foreign
Affairs
Division
October 13, 1994

