

93-14
RESOLUTION NO.-----

AN ORDINANCE EXTENDING THE CORPORATE LIMITS OF THE
CITY OF COKATO TO INCLUDE CERTAIN UNINCORPORATED
PLATTED LAND (UNPLATTED LAND NOT EXCEEDING 200 ACRES
IN AREA) ABUTTING UPON THE CITY LIMITS

WHEREAS, a certain Petitions dated 10/6 & 10/12 1993 requesting Annexation of the territory hereinafter described was duly presented to the council on the October 12, 1993.

WHEREAS, the Petitions were signed by the property owners; and

WHEREAS, no objections to the annexation have been received from the township board, or the governing body or any municipality whose boundaries abut upon the boundaries of the land to be annexed; and

WHEREAS, the land described in the Petitions abuts upon the City limits on the east boundary thereof;

The council of the City of Cokato, Wright County, Minnesota ordains;

Section 1. The City Council hereby determines (1) that the territory described herein abuts upon the city limits and is commercial in character; and (2) that none of the territory is now included within the limits of any city.

Section 2. Territory Annexed. The corporate limits of the city are hereby extended to include the unplatted land described as in Exhibit A and the same is hereby annexed to and included within the city as effectually as if it had originally been a part thereof.

Section 3. Filing. The City Clerk is hereby directed to file certified copies of this ordinance with the Minnesota Municipal Board, the secretary of State, the Towns Clerk, and the Wright County Auditor in accordance with 414.033 Sub. 5.

REC'D BY
M.M.B. OCT 29 1993

Section 4. Effective Date. This ordinance takes effect upon its passage and publication and the filing of the certified copies as directed in Section 3, and approval of the ordinance by the Minnesota Municipal Board.

Adopted by the council on this 13th day of October 1993

Daggy L. Carlson
Clerk

W. L. Gwend
Mayor

REC'D. BY
MMB OCT 29 1993

STATE OF MINNESOTA
COUNTY OF WRIGHT
CITY OF COKATO

I, the undersigned, being the duly qualified and acting clerk of the City of Cokato, Minnesota, do hereby certify that I have carefully compared the attached and foregoing ordinance adopted by the City Council on with the original transcript of the meeting minutes on file in my office, and the same is a full, true and correct transcript thereof insofar as the same related to the annexation of certain unplatted land not exceeding two hundred acres in size to the City of Cokato, Minnesota.

WITNESS, My hand as such clerk and the corporate seal of said City this 13th day of October 1993.

S E A L

CITY OF COKATO



Peggy Carlson, Clerk

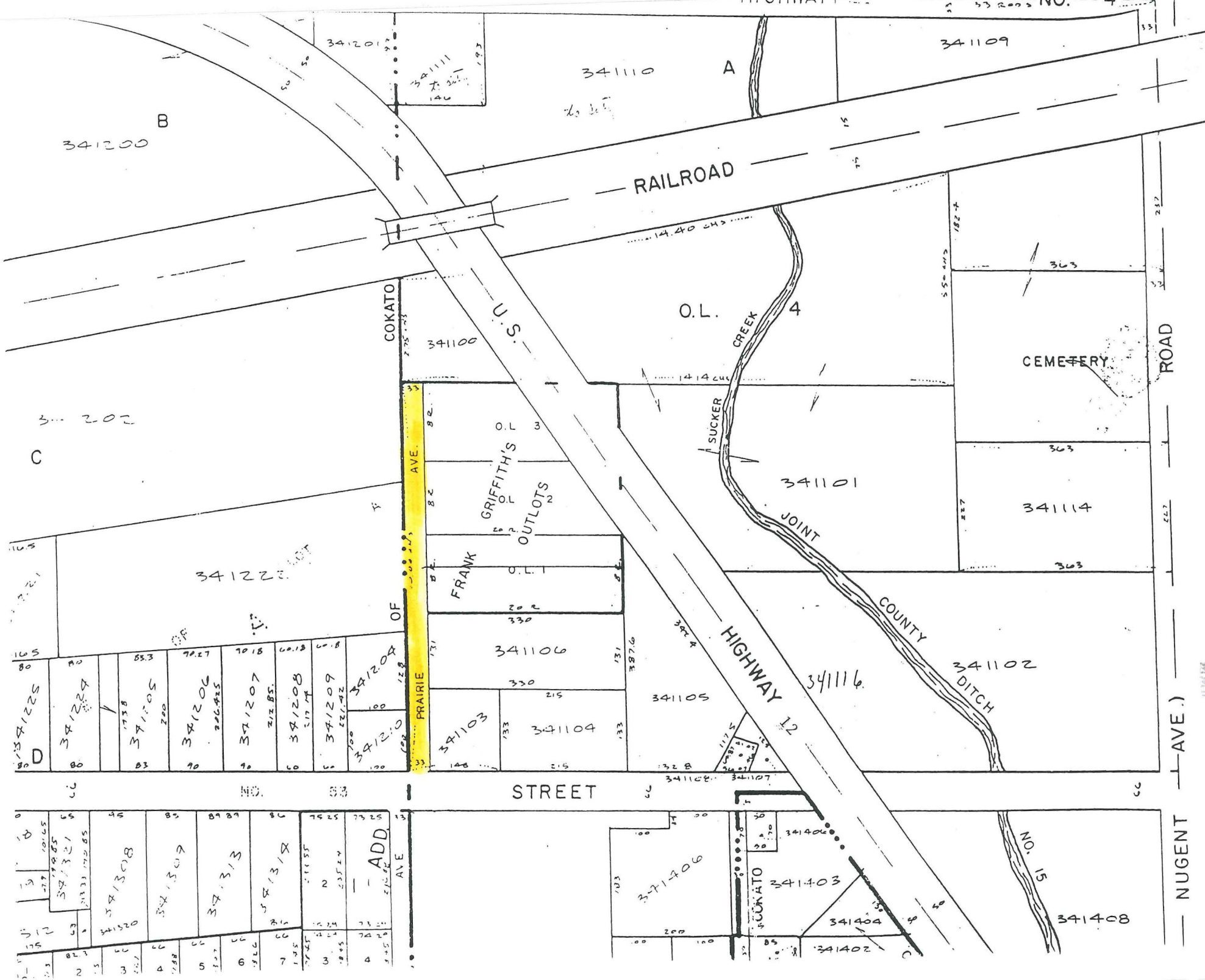
Exhibit A
(Legal Description)

David R. Braatz & Angela F. Braatz

Outlots 1, 2, 3 and 4, FRANK GRIFFITH OUTLOTS, Wright County, Minnesota lying southwesterly of the Southwest right of way line of U.S. Highway No. 12. EXCEPT The South 75.00 feet of said Outlot 1.

Prairie Avenue

According to the recorded plat of Frank Griffith Outlots, on file and of record in the office of the County Recorder, Wright County, Minnesota.



RECD. BY OCT 29 1993
M.A.R.