

ORDINANCE NO. 277

AN ORDINANCE EXTENDING THE CORPORATE LIMITS OF THE CITY OF CAMBRIDGE

AN ORDINANCE extending the Corporate limits of the City of Cambridge to include certain unincorporated territory abutting upon the limits of the City and consisting of 60 acres or less for which a Petition for Annexation has been received from all property owners of the land.

WHEREAS, the territory described below is not presently within the corporate limits of any incorporated City; and

WHEREAS, this territory abuts upon the corporate limits of the City along the North side of the property and is deemed to be urban or suburban in character or about to become so; and

WHEREAS, this territory consists entirely of an area totaling 60 acres or less; and

WHEREAS, the municipality has received a valid Petition for Annexation from all the property owners of said land; and

WHEREAS, the population of said area to be annexed is 0.

The City Council of Cambridge ordains:

SECTION 1. TERRITORY ANNEXED.

The corporate limits of the City of Cambridge are hereby extended to include the unplatted territory described as follows, which territory abuts the municipality, consists of 60 acres or less, and for which the municipality has received a valid Petition for Annexation from all the owners of said land:

The West 60 acres of the West Half of Northeast Quarter (W 1/2 of NE 1/4) of Section Seventeen (17), Township Thirty-five (35), Range Twenty-three (23), lying and being East of the East right-of-way line of State Highway No. 65.

RECEIVED BY
JUL 13 1993

SECTION 2. FILING.

The City Clerk-Administrator is directed to file certified copies of this Ordinance with the Secretary of State, the County Auditor of Isanti County, the Town Clerk of Isanti Township and the Minnesota Municipal Board.

SECTION 3. EFFECTIVE DATE OF ANNEXATION.

This Ordinance takes effect upon its passage and publication and the filing of certified copies as directed in Section 2 and final approval by the Minnesota Municipal Board.

ADOPTED BY THE CITY OF CAMBRIDGE, MINNESOTA, June 21, 1993.

CITY OF CAMBRIDGE

By: 

Its: _____

ATTEST:

By: 

Its: _____

PUBLISHED IN _____ ON _____, 1993.

This instrument was drafted by:

Jimmy A. Lindberg
PARKER, SATROM, O'NEIL,
LINDBERG & McKINNIS, P.A.
123 South Ashland
Cambridge, MN 55008
(612) 689-3000
Attorney I.D. 63290

JAL/cb
EASTORD

I, Scott G. Larson, Clerk-Administrator for the City of Cambridge, do hereby certify that I have compared the copy of this Ordinance with the original on file and of record in my office and that it is a true and correct copy thereof.

CITY OF CAMBRIDGE

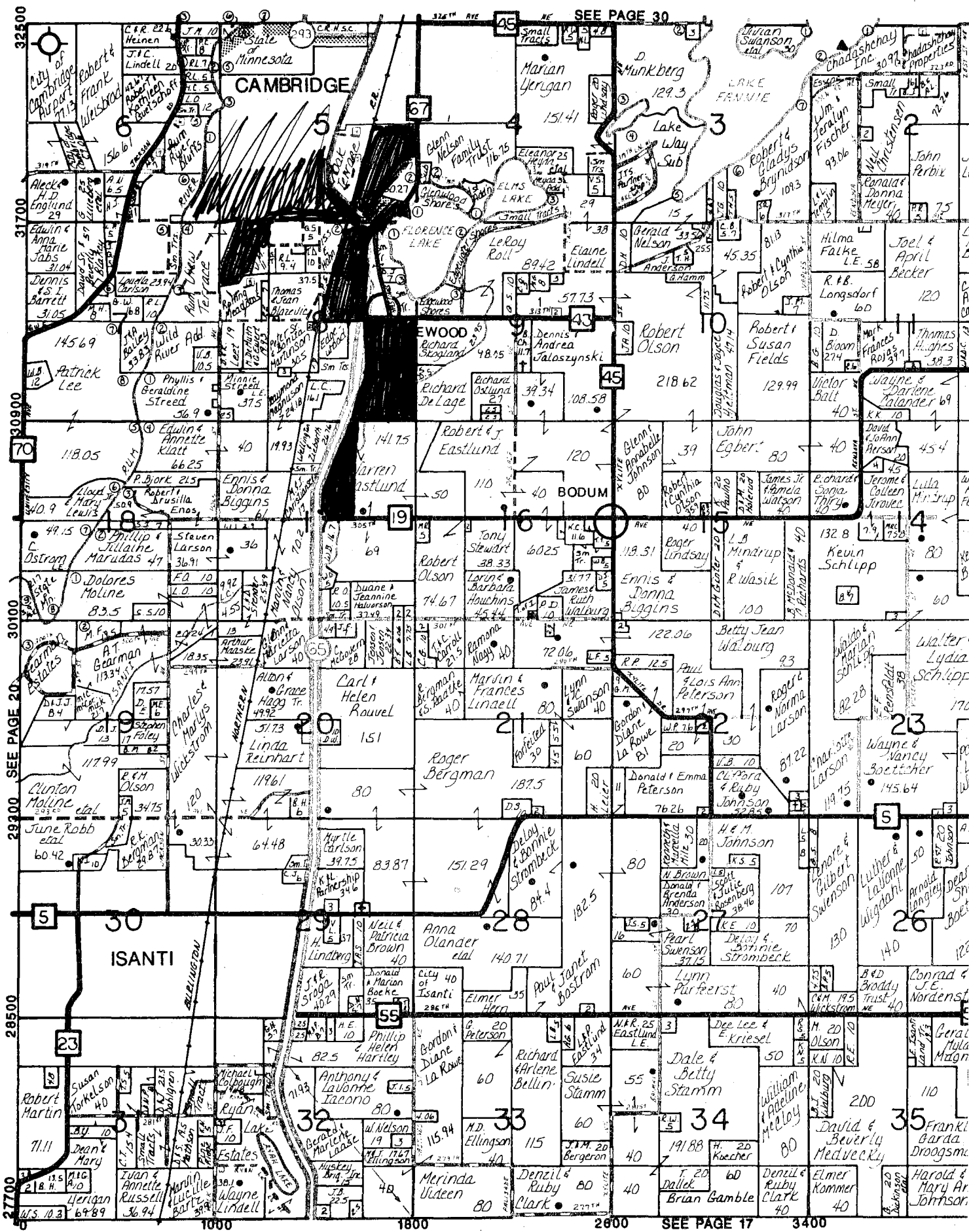
By: 

Scott G. Larson

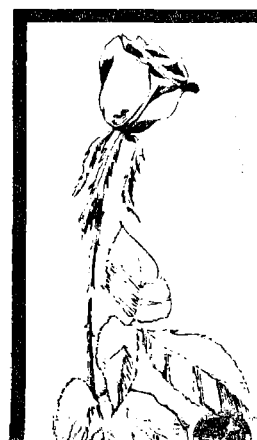
Its: Clerk-Administrator

City of Cambridge Eastlund Annexation - Ord # 277

T.S.



See Page 12



STRIKE FUNERAL CHAPEL and ELAINE'S FLOWERS & GIFTS ISANTI, MN



Hugo Strike, Jr.
Dire

"Flowers With A Personal Touch"

AAA 8000

AAA