

ORDINANCE NO. 399

REC'D BY
MMB MAR 09 1993

AN ORDINANCE TO ANNEX CERTAIN LANDS WHICH ARE NOW COMPLETELY
SURROUNDED BY THE CORPORATE LIMITS OF THE CITY OF GLENCOE

WHEREAS, the City of Glencoe has determined that there is an unannexed area which is now completely surrounded by land included within the municipal limits, and

WHEREAS, Minnesota Statutes 414.033, Subd. 2(b) permit the City to annex such lands by ordinance, and

WHEREAS, the City Council of the City of Glencoe ordains:

Section 1: The following described parcel, completely surrounded by land within the municipal limits of the City of Glencoe is hereby declared to be land annexed to the City of Glencoe, to-wit:

All those parts of Lots 13, 15 and 16 of the Auditor's Plat of the South Half of Section Thirteen (13) and the North Half of Section Twenty-Four (24), Township One Hundred Fifteen (115), Range Twenty-Eight (28) West not presently within the City of Glencoe, but now completely surrounded by the City limits of the City of Glencoe.

Section 2: The City Administrator is instructed upon passage and publication of this ordinance that he shall file the same with the Minnesota Municipal Board, the Glencoe Township, McLeod County Auditor, Secretary of State of the State of Minnesota, and the McLeod County Recorder/Registrar of Titles, as appropriate.

This ordinance shall take effect and be in force from and after its passage, publication and filings as required.

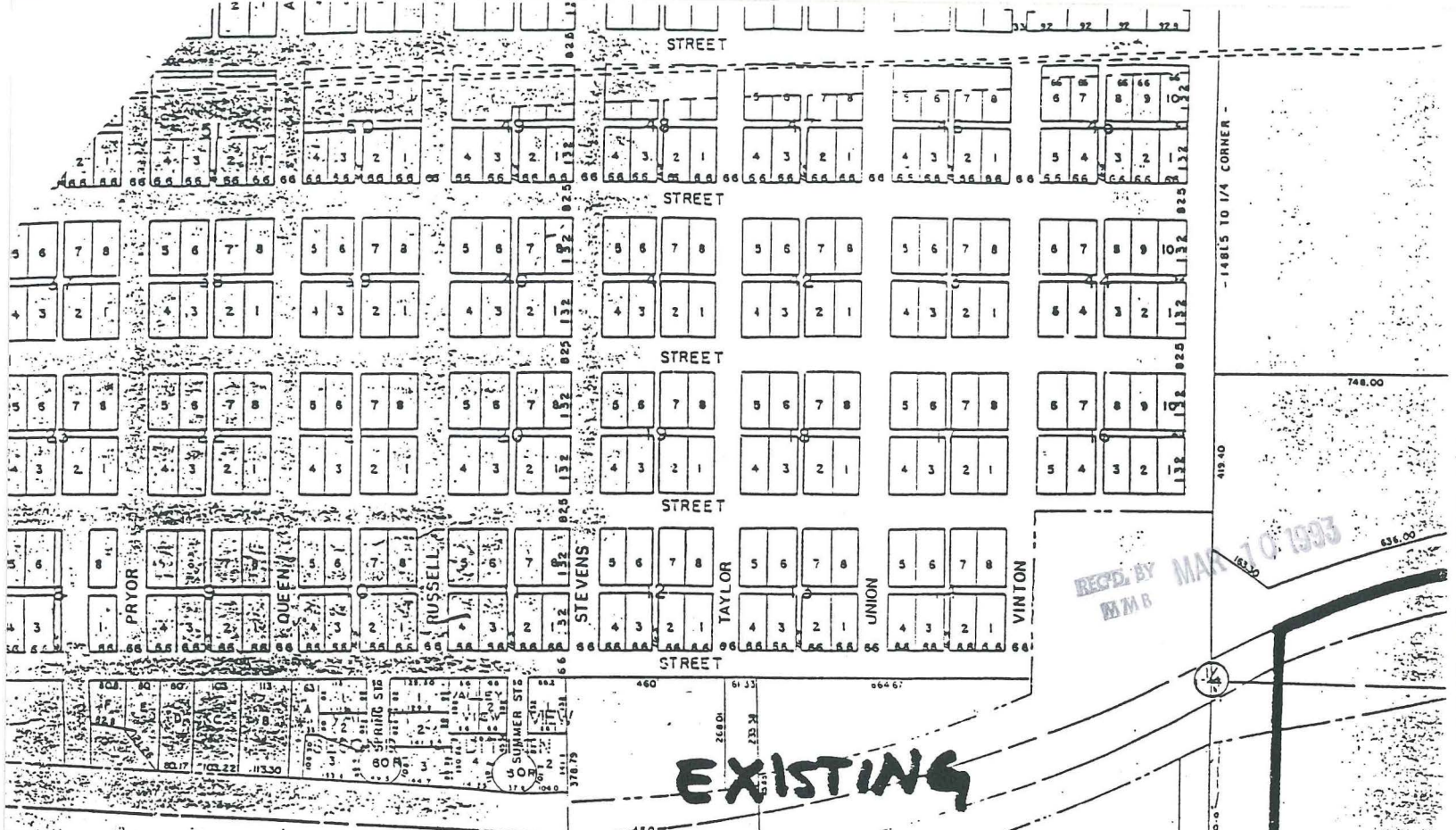
Approved the 17th day of August, 1992.

Ray C. Wilkins
Ray C. Wilkins
Mayor

ATTEST:

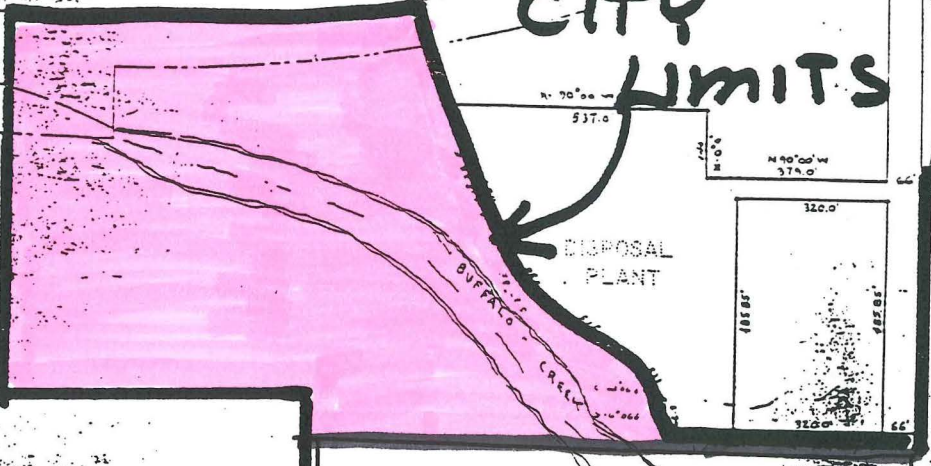
Mark D. Larson
Mark D. Larson
City Administrator

Published in the Glencoe Enterprise the 20th day of August, 1992.



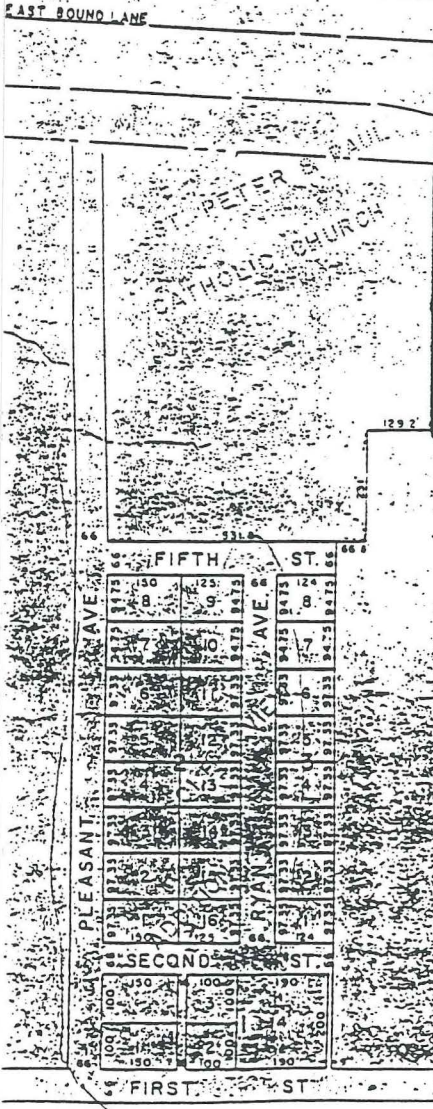
REC'D. BY
M/M/B
MAY 10 1993

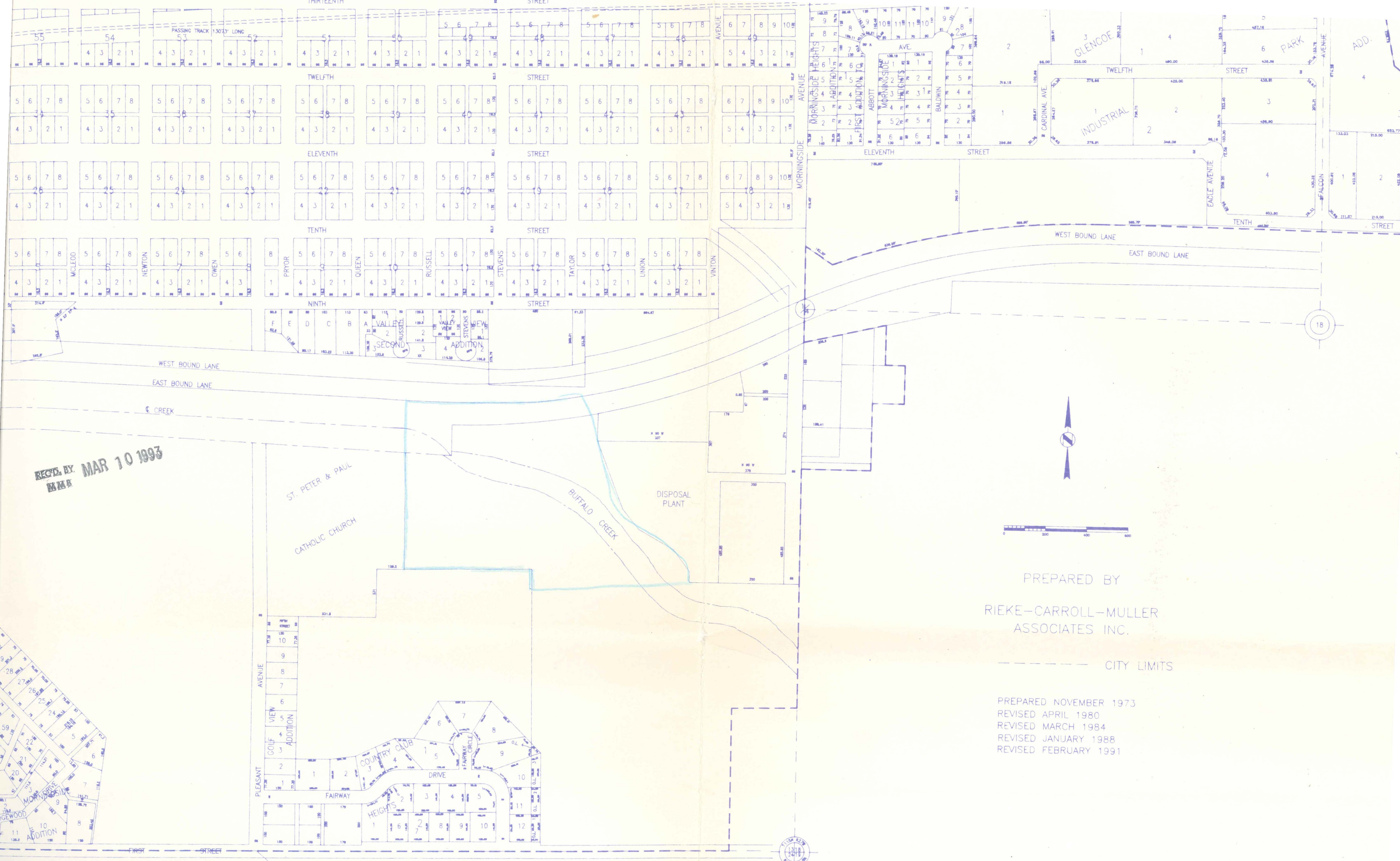
**EXISTING
CITY
LIMITS**



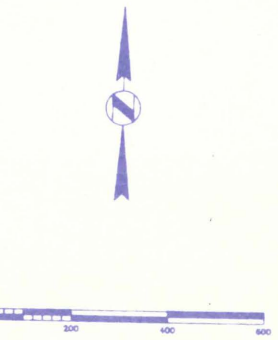
DISPOSAL
PLANT

35 acres





REC'D. BY MAR 10 1993
MMB



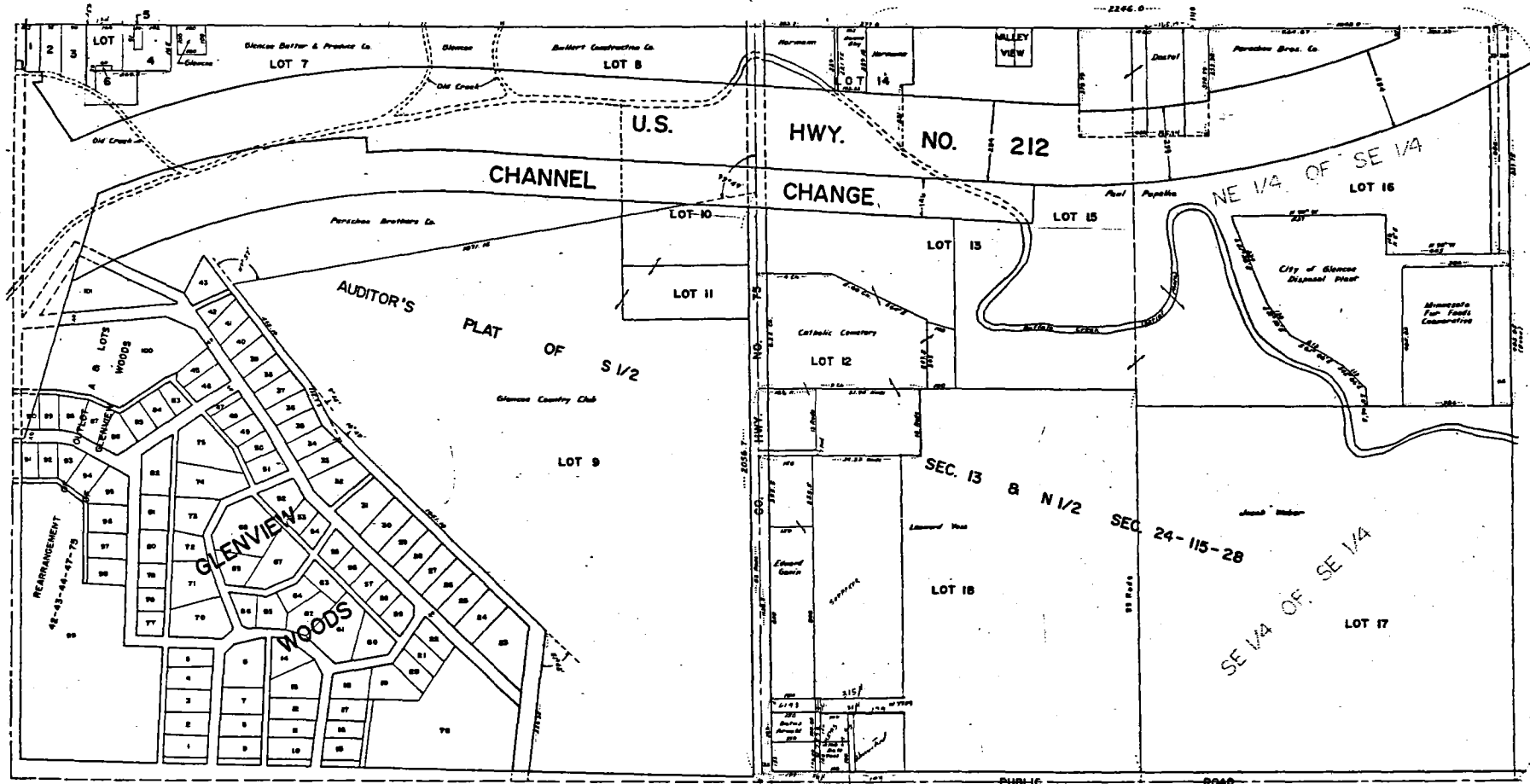
PREPARED BY
RIEKE-CARROLL-MULLER
ASSOCIATES INC.
----- CITY LIMITS

PREPARED NOVEMBER 1973
REVISED APRIL 1980
REVISED MARCH 1984
REVISED JANUARY 1988
REVISED FEBRUARY 1991



RECEIVED APR 17 1957
M.M.F.

S 1/2 SEC. 13, T. 115, R. 28



THIS IS NOT A LEGALLY RECORDED PLAT.

DICKMAN C. KNUTSON
COUNTY SURVEYOR
MCLEOD COUNTY, MINN.

RECORDED BY APR 11 1997
MMP

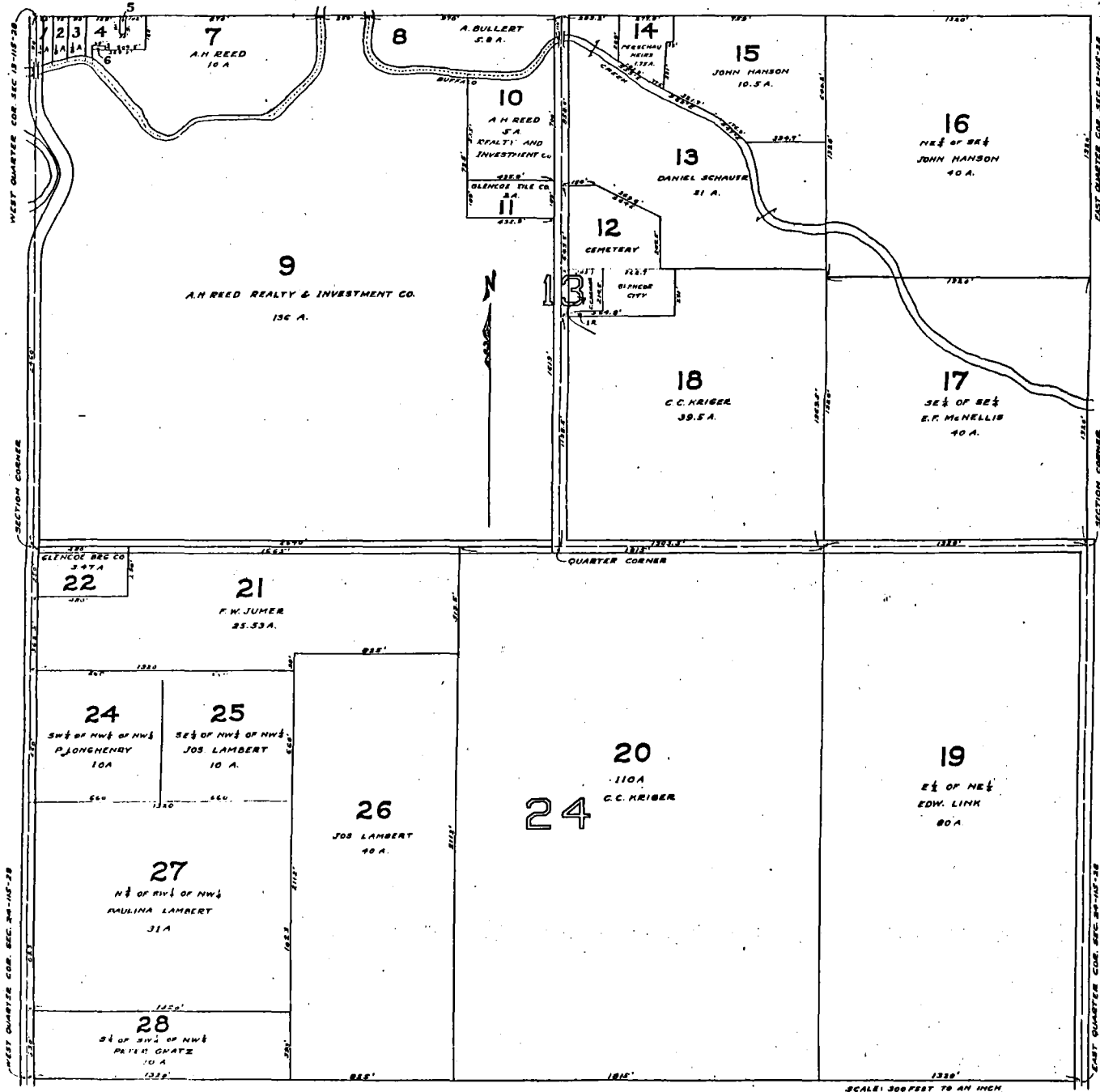
57559

Auditor's Plat

of

5 1/2 Sec. 13 & N 1/2 Sec. 24-115-28

December 26
C. Schuler



I hereby certify that I have compiled this plat from records in the office of the Register of Deeds, McLeod County, Minnesota, and from surveys made on the ground, and that this plat is a correct representation of said records and surveys, that I have numbered the various tracts shown hereon as lots 1 to 28 inclusive, and is known as "AUDITOR'S PLAT OF THE SOUTH HALF OF SECTION 13 AND THE NORTH HALF OF SECTION 24, TWP. 115 N., RGE. 28 W." This plat is made under provision of Section 2213, Chap. 11, General Statutes of Minnesota, 1923.

Approved at meeting of the Board of County Commissioners duly held this 26th day of December, 1926.
County Auditor, McLeod County, Minn.
Approved as to legality.
County Attorney, McLeod County, Minn.