

Councilmember Christensen introduced the following ordinance and moved for its adoption:

ORDINANCE NO. 93-2-4

AN ORDINANCE EXTENDING THE CORPORATE LIMITS OF
THE CITY OF GRAND RAPIDS TO INCLUDE CERTAIN LAND
OWNED BY THE CITY OF GRAND RAPIDS AND ABUTTING
THE CITY LIMITS OF GRAND RAPIDS
(NW 1/4 OF SW 1/4, SECTION 15-55-25, LESS THE WEST 264 FEET)

WHEREAS, the City of Grand Rapids is the legal owner of the following described property:

The NW 1/4 of the SW 1/4, Section 15, Township 55N,
Range 25 West, less the West 16 Rods (264.00 feet)

and;

WHEREAS, the City of Grand Rapids is the sole owner of the property, the property is unincorporated, abuts the limits of the City of Grand Rapids, is not included within any other municipality, is not included in any area that has already been designated or orderly annexation pursuant to Minnesota Statutes 414.0325, and is approximately 32.4 acres in size.

NOW THEREFORE, the City Council of Grand Rapids, Minnesota, does hereby ordain:

Section 1. The City Council hereby determines and finds that the property abuts the municipality, that the area to be annexed is sixty (60) acres or less, that the property is not included in any area that has already been designated for orderly annexation pursuant to Minnesota Statutes 414.0325, that the municipality is the sole owner of the property to be annexed, and that all of the provisions of Minnesota Statute 414.033 have been complied with.

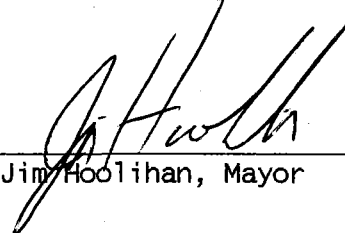
Section 2. The property is urban in nature or about to become so.

Section 3. The corporate limits of the City of Grand Rapids are hereby extended to include the property and the same is hereby annexed to and included within the City of Grand Rapids as if the property had originally been a part thereof.

Section 4. The City Clerk is directed to file certified copies of this ordinance with the Minnesota Municipal Board, Grand Rapids Township, the Itasca County Auditor, and the Minnesota Secretary of State.

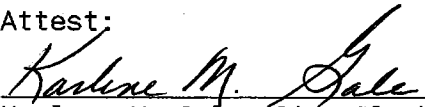
Section 5. This ordinance takes effect upon its passage and publication and the filing of the certified copies as directed in Section 4 and approval of the ordinance by the Minnesota Municipal Board.

Adopted this 8th day of February, 1993.


Jim Hoolihan, Mayor

Ordinance No. 93-2-4
Page 2

Attest:


Karlene M. Gale, City Clerk

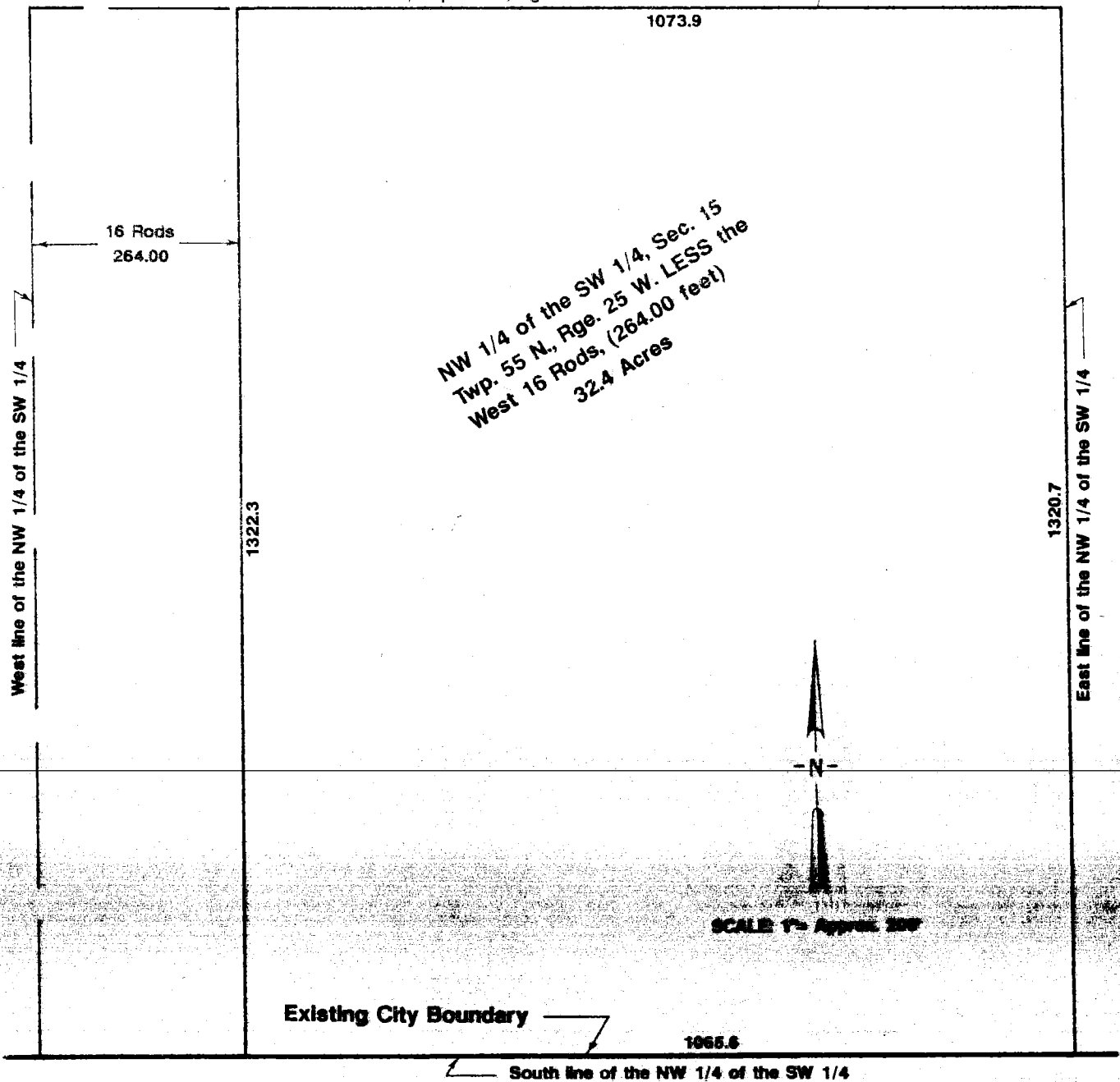
Councilmember Akre seconded the foregoing ordinance and the following voted in favor thereof: Christensen, Huntley, Voltz, Akre, Hoolihan; and the following voted against same: None, whereby the resolution was declared duly adopted and ordained.

Annexation Sketch for:
CITY OF GRAND RAPIDS

REC'D. BY
MMB

FEB 23 1993

North line of the NW 1/4 of the SW 1/4,
Sec. 15, Twp. 55 N., Rge. 25 W. of the 4th P.M.



KOVANEN & OSUFSEN INC.
Registered Land Surveyors
1205 NW 4th Street
Grand Rapids, MN 55744
(218) 326-5325

#93004B

RECD BY
MAR 23 1993

MAP OF AND RAPIDS MINNESOTA

HAN
Land Surveyor
BY 1, 1975
VISTO
ABER 1, 1977
PPLER
BER 1, 1982
NGS
R 1, 1986
D

SEC. 18-55-25

SEC. 18-55-25

OF SEC. 18-55-25

ADDITION

ST. W.

LEGEND
VILLAGE LIMITS
ADDITION BOUNDARIES
PARK BOUNDARIES
VILLAGE PROPERTY

