

ORDINANCE NO. 261

AN ORDINANCE EXTENDING THE CORPORATE LIMITS OF THE CITY OF CAMBRIDGE

AN ORDINANCE extending the Corporate limits of the City of Cambridge to include certain unincorporated territory abutting upon the limits of the City and consisting of 60 acres or less for which a Petition for Annexation has been received from all property owners of the land.

WHEREAS, the territory described below is not presently within the corporate limits of any incorporated City; and

WHEREAS, this territory abuts upon the corporate limits of the City at the North boundary line thereof and is deemed to be urban or suburban in character or about to become so; and

WHEREAS, this territory consists entirely of an area totalling 60 acres or less; and

WHEREAS, the municipality has received a valid Petition for Annexation from all the property owners of said land; and

WHEREAS, the population of said area to be annexed is "0";

The City Council of Cambridge ordains;

SECTION 1. TERRITORY ANNEXED.

The corporate limits of the City of Cambridge are hereby extended to include the unplatted territory described as follows, which territory abuts the municipality, consists of 60 acres or less, and for which the municipality has received a valid Petition for Annexation from all the owners of said land:

All of the railroad right-of-way of the Burlington Northern Railroad lying South of the centerline of Section Five (5), Township Thirty-five (35), Range Twenty-three (23) and North of the centerline of Section Eight (8), Township Thirty-five (35), Range Twenty-three (23), Isanti County, Minnesota.

SECTION 2. FILING.

The City Clerk-Administrator is directed to file certified copies of this Ordinance with the Secretary of State, the County Auditor of Isanti County, the Town Clerk of Isanti Township and the Minnesota Municipal Board.

SECTION 3. EFFECTIVE DATE OF ANNEXATION.

This Ordinance takes effect upon its passage and publication and the filing of certified copies as directed in Section 2 and final approval by the Minnesota Municipal Board.

ADOPTED BY THE CITY OF CAMBRIDGE, MINNESOTA, November 23, 1992.

CITY OF CAMBRIDGE

By: 

Its: Mayor

ATTEST:

By: 

Its: Clerk-Administrator

PUBLISHED IN Isanti County News, December 10, 1992.

THIS INSTRUMENT WAS DRAFTED BY:

Jimmy A. Lindberg
PARKER, SATROM, O'NEIL,
LINDBERG & McKINNIS, P.A.
123 South Ashland
Cambridge, MN 55008
Telephone: (612) 689-2572
Attorney Reg. No: 63290
CV1-A/tla

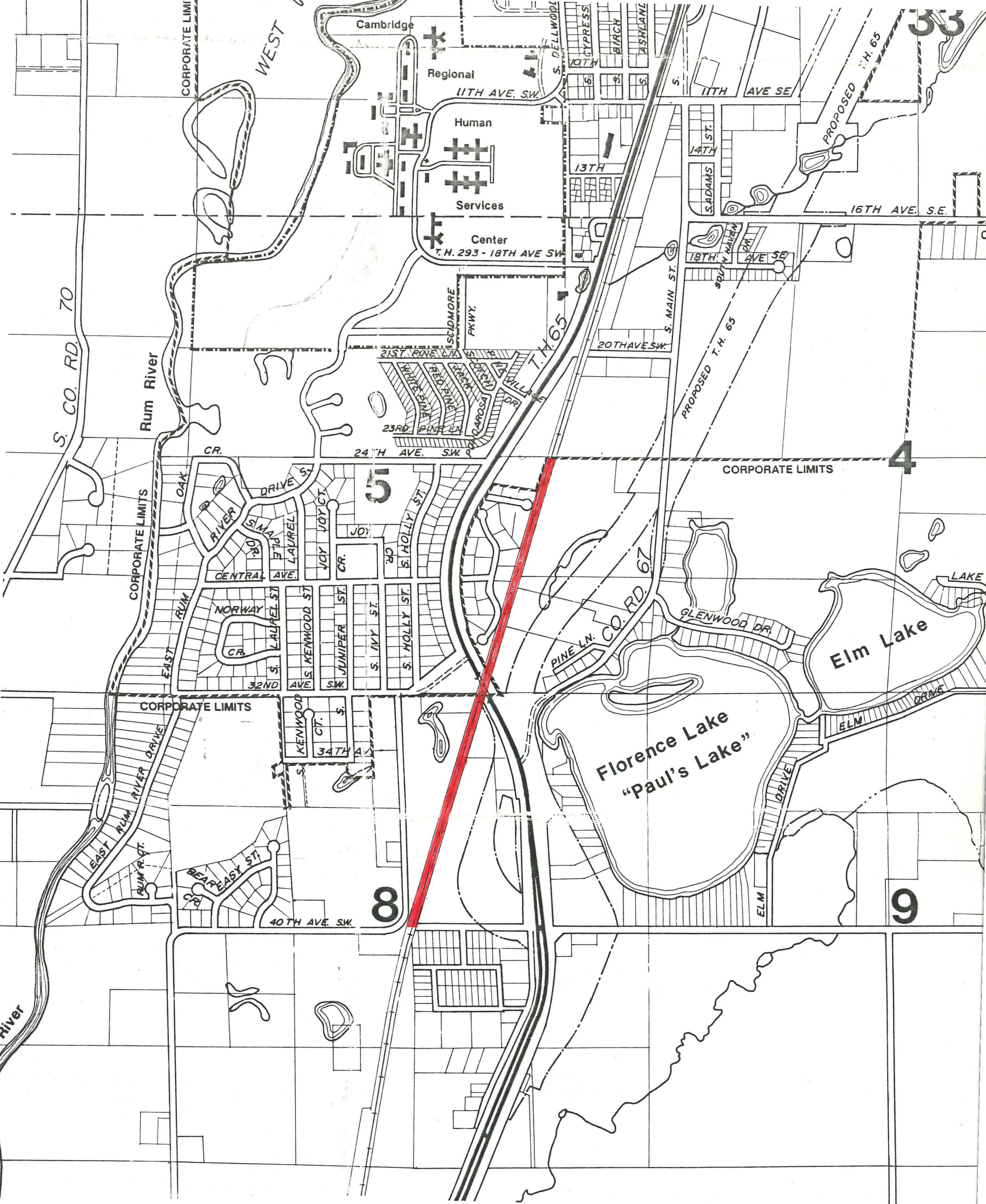
I, Scott G. Larson, Clerk-Administrator for the City of Cambridge do hereby certify that I have compared the copy of this Ordinance with the original on file and of record in my office and that it is a true and correct copy thereof.

CITY OF CAMBRIDGE

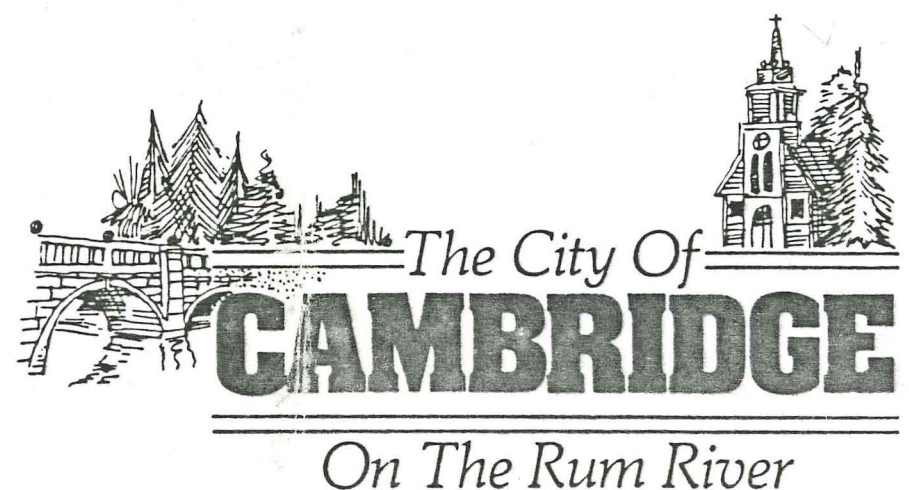
By: 

Scott G. Larson

Its: Clerk-Administrator



REC'D. BY DEC 11 1992
MMB



Cambridge