

AN ORDINANCE EXTENDING THE CORPORATE LIMITS OF  
THE CITY OF AUSTIN TO INCLUDE CERTAIN UNINCORPORATED  
LAND ABUTTING THE CITY OF AUSTIN LIMITS.

WHEREAS, a certain petition dated September 9, 1992, requesting annexation of the territory described herein was duly presented to the Common Council on the 21st day of September, 1992, and

WHEREAS, the quantity of land embraced within the area described in the petition is approximately 0.984 acres of platted land, no part of which is included within the limits of any incorporated city, village, or borough, and

WHEREAS, the petition was signed by all the owners, and

WHEREAS, no objection to annexation have been received from the Town Board, the County Board, or the governing body of any municipalities whose boundaries abut upon the land to be annexed; and

WHEREAS, the land described hereinafter abuts the city limits on the northwest boundary thereof.

NOW, THEREFORE, THE COMMON COUNCIL OF THE CITY OF AUSTIN DO ORDAIN:

SECTION 1: The City Council hereby determines that the annexation will be in the best interest to the City and the territory affected. That the territory described herein abuts the city limits and is urban or suburban in character and that none of said territory is now included within the limits of any city, village, or borough.

SECTION II: The corporate limits of the City of Austin are hereby extended to include the platted land described as follows, the same is hereby annexed to, and included within the city as affectionally as if it had originally been a part thereof:

Lot 3 in Cresthaven Second Addition in the Southeast Quarter of the Northeast Quarter of Section 5, Township 102 North, Range 18 West, Mower County, Minnesota, and right-of-way on 27th Street N.W. adjoining said lot. 0.984 Acres

SECTION III: The City Recorder is hereby directed to file certified copies of said ordinance with the Minnesota Municipal Commission, the Austin Township Clerk, County Auditor, County Recorder, Austin Utilities, and the Secretary of State.

SECTION IV: The ordinance takes affect upon its passage, publication, filing of certified copies as directed within Section III.

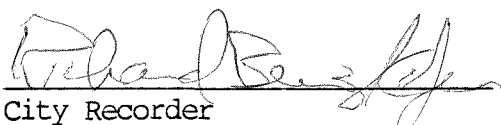
Passed by a vote of Yeas and Nays this 21st day of September, 1992.

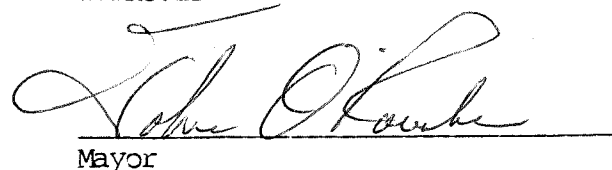
YEAS 7

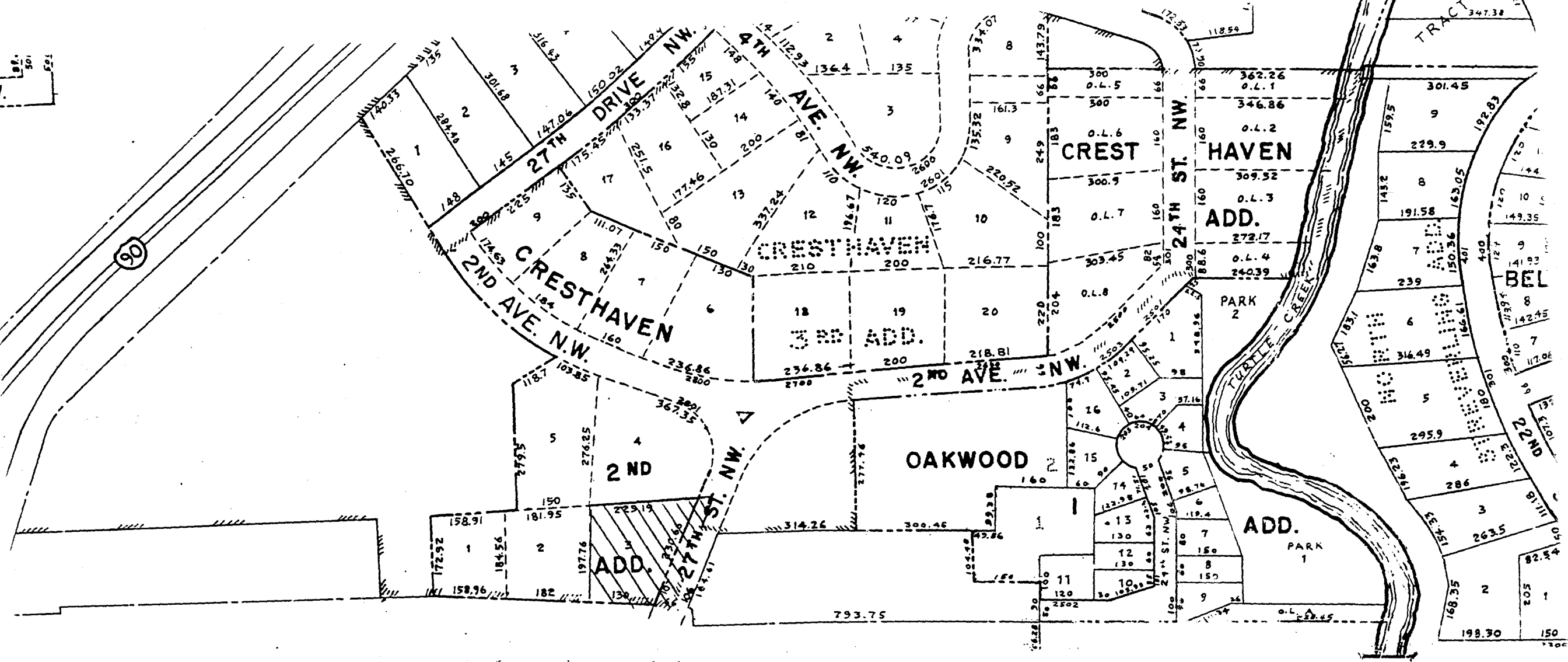
NAYS 0

ATTEST:

APPROVED:

  
City Recorder

  
Mayor



SWAIN



AREA TO BE ANNEXED = 0.984 ACRES

REC'D. BY SEP 25 1992  
MMB