

ORDINANCE NO. 800

**AN ORDINANCE EXTENDING THE CORPORATE LIMITS OF
THE CITY OF TAYLORS FALLS TO INCLUDE CERTAIN
UNINCORPORATED PROPERTY ABUTTING UPON THE LIMITS OF THE CITY**

WHEREAS, Ronnie R. Chinander and Monica J. Randall have petitioned the City Council for annexation of land located within the County of Chisago and State of Minnesota legally described as the South 410 feet of the East 447 feet of the SE 1/4 of SW 1/4 of Section 26, Township 34, Range 19; and

WHEREAS, Ronnie R. Chinander and Monica J. Randall are all of the owners of the above-described land; and

WHEREAS, said land contains less than sixty acres and abuts the City of Taylors Falls and is not presently a part of an incorporated city, village or borough; and

WHEREAS, the land is immediately adjacent to the city sewer system, and city sewer and water are available in the vicinity; and

WHEREAS, said land may be annexed to the City of Taylors Falls pursuant to Minnesota Statutes Section 414.033, Subd. 2(3)(1992);

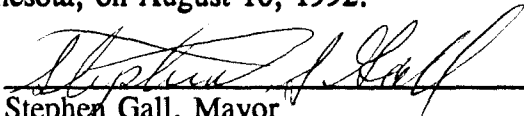
THE CITY COUNCIL OF TAYLORS FALLS ORDAINS:

Section 1. Territory Annexed. The corporate limits of the City of Taylors Falls are hereby extended to include the South 410 feet of the East 447 feet of the SE 1/4 of SW 1/4 of Section 26, Township 34, Range 19, Chisago County, Minnesota.


Section 2. Filing and Publication. The City Clerk is directed to file copies of this ordinance with the Chisago County Auditor, the Clerk of the Town of Shafer, and the Minnesota Municipal Board and to publish this ordinance in the Chisago County Press.

Section 3. Effective Date of Annexation. This ordinance takes effect upon its passage and publication and the filing of copies as directed in Section 2 and upon being approved by the State of Minnesota Municipal Board.

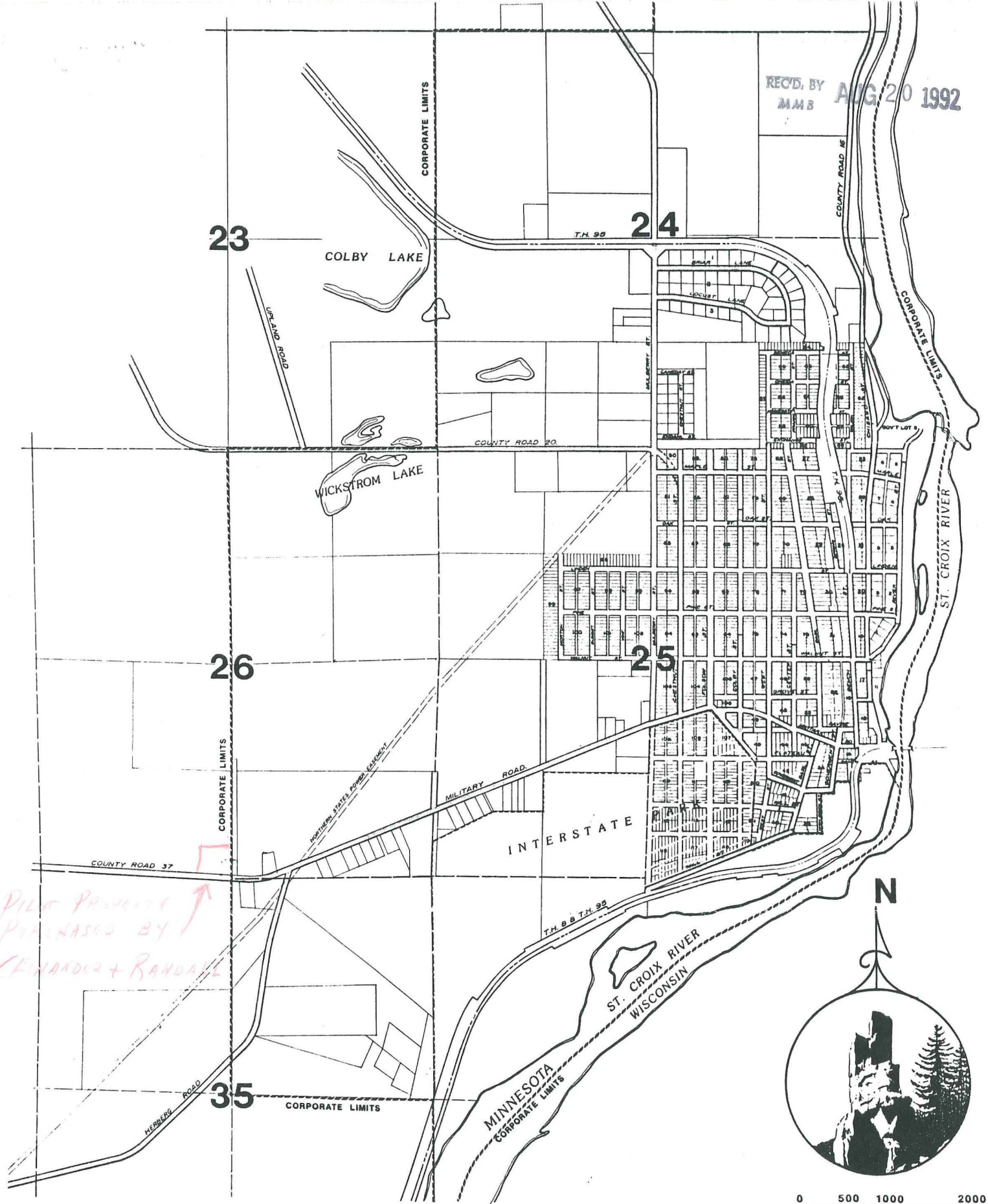
Adopted by the City of Taylors Falls, Minnesota, on August 10, 1992.


Stephen Gall, Mayor

ATTEST:


Clifford Anderson, City Clerk

REC'D. BY
MMB
AUG 20 1992



TAYLORS FALLS, MINNESOTA CITY ON THE RIVER

