

ORDINANCE NO. 4.06

AN ORDINANCE EXTENDING THE CORPORATE LIMITS OF
THE CITY OF GRAND MEADOW TO INCLUDE CERTAIN UNINCORPORATED
LAND ABUTTING THE CITY OF GRAND MEADOW LIMITS.

WHEREAS, a certain petition dated July 25, 1991, requesting annexation of the territory described herein was duly presented to the City Council on the 5th day of September, 1991 and;

WHEREAS, the quantity of land embraced within the area described in the petition is approximately 9.26 acres of platted land, no part of which is included within the limits of any incorporated city, village, or borough, and

WHEREAS, the petition was signed by all the owners, and

WHEREAS, Grand Meadow City Council has no objection to the annexation upon the land to be annexed and has waived the 90 day period before the annexation ordinance may be adopted, and

WHEREAS, the land described hereinafter abuts the City Limits on the North boundary thereof.

NOW, THEREFORE, THE CITY COUNCIL OF THE CITY OF GRAND MEADOW DO ORDAIN:

SECTION 1: The City Council hereby determines that the annexation will be in the best interest to the City and the territory affected. That the territory described herein abuts the City limits and is urban or suburban in character and that none of said territory is now included within the limits of any City, Village or borough.

SECTION 11: The corporate limits of the City of Grand Meadow are hereby extended to include the platted land described as follows, the same is hereby annexed to, and included within the City as affectionally as if it had originally been a part thereof:

See attached description

SECTION 111: The City Clerk is hereby directed to file certified copies of said ordinance with the Minnesota Municipal Commission, the Grand Meadow City Clerk, County Auditor, County Recorder, and the Secretary of State.

SECTION 1V: The ordinance takes affect upon its passage, publication, filing of certified copies as directed within Section 111.

Passed by a vote of YEAS and NAYS this 5th day of September, 1991.

5 YEAS

0 NAYS

ATTEST:

APPROVED:

Gloria Olson
City Clerk

Dorothy Youngblood
Mayor

REC'D. BY
MMS SEP 26 1991

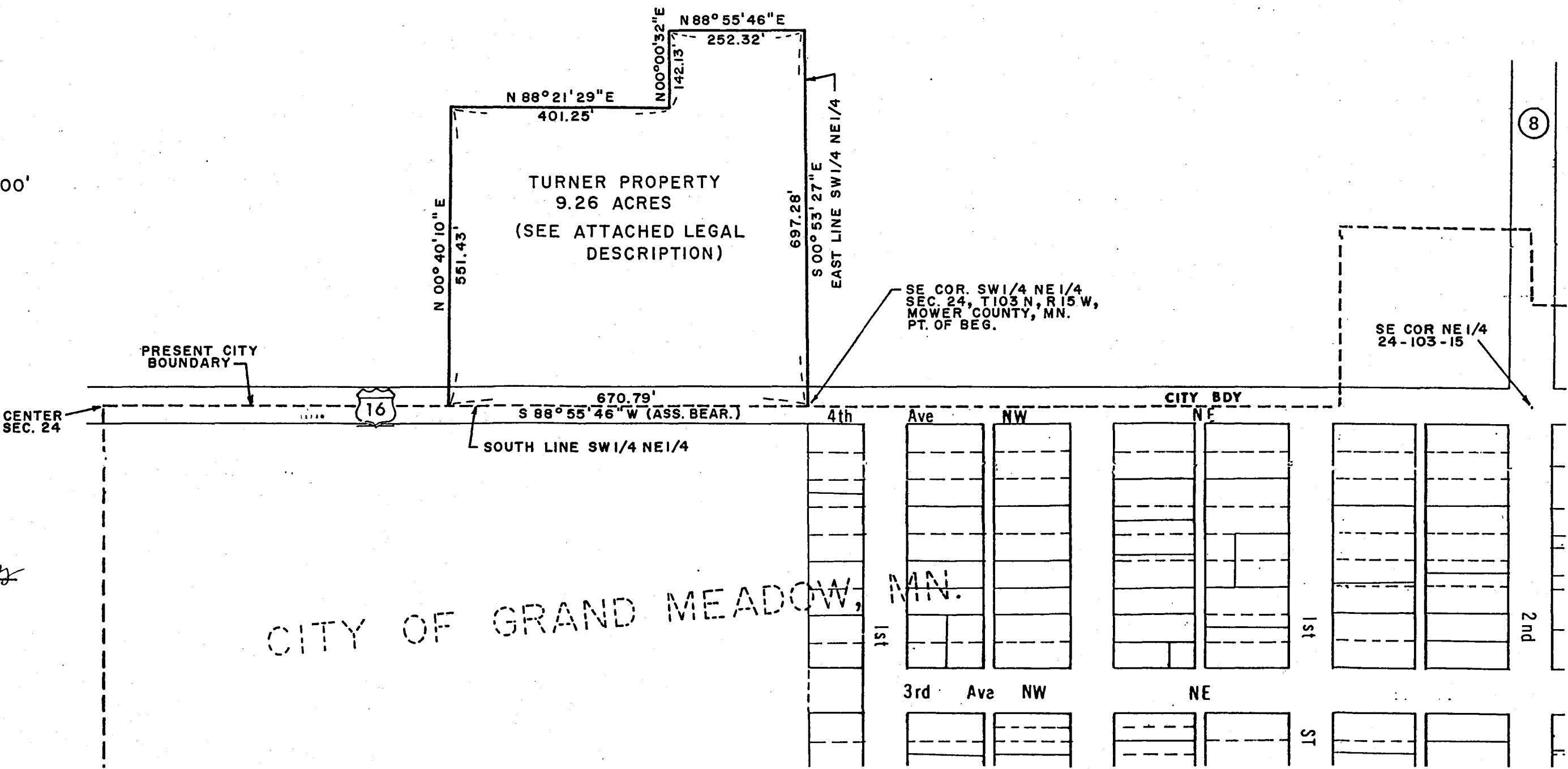
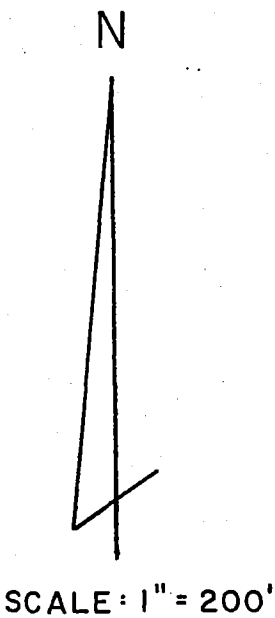
LEGAL DESCRIPTION - 9.26 acres

That part of the Southwest Quarter of the Northeast Quarter (SW 1/4 NE 1/4) of Section 24, Township 103 North, Range 15 West, Mower County, Minnesota, described as follows: Beginning at the Southeast Corner of said SW 1/4 NE 1/4; thence South 88 degrees 55 minutes 46 seconds West (assumed bearing) along the South line of said SW 1/4 NE 1/4, 670.79 feet; thence North 00 degrees 40 minutes 10 seconds East, 551.43 feet; thence North 88 degrees 21 minutes 29 seconds East, 401.25 feet; thence North 00 degrees 00 minutes 32 seconds East, 142.13 feet; thence North 88 degrees 55 minutes 46 seconds East, 252.32 feet to the East line of said SW 1/4 NE 1/4; thence South 00 degrees 53 minutes 27 seconds East along said East line, 697.28 feet to the point of beginning and containing 9.26 acres, more or less. Subject to easement for Minnesota Trunk Highway No. 16 across the South line thereof. Subject to any other easements of record.

PROPOSED ANNEXATION OF 9.26 ACRES
OWNED BY ROBERT & ROBERTA TURNER
TO THE CITY OF GRAND MEADOW, MN.

REC'D. BY SEP 24 1991
MMB

A PART OF THE SW1/4 NE1/4 OF SEC. 24, T103 N, R15 W,
MOWER COUNTY, MINNESOTA



PREPARED BY:

Jerome R. Schwarz

JEROME R. SCHWARZ

REG. NO. 13810

DATE: 7/22/91

CITY OF GRAND MEADOW, MN.