

ORDINANCE NO. 46

AN ORDINANCE EXTENDING THE CORPORATE LIMITS
OF THE CITY OF DETROIT LAKES, MINNESOTA TO INCLUDE CERTAIN
UNINCORPORATED TERRITORY COMPLETELY BORDERED
BY LAND WITHIN THE CITY LIMITS AND ABUTTING THEREON

THE COUNCIL OF THE CITY OF DETROIT LAKES, MINNESOTA DOES HEREBY
ORDAIN:

WHEREAS, a certain territory described below is not presently
included within the corporate limits of any incorporated city or
borough; and

WHEREAS, sixty (60) percent or more of the perimeter of this
territory is bordered by lands already within the corporate limits
of the City and is deemed to be urban or suburban in character.

The Council of the City of Detroit Lakes, Minnesota does hereby
ordain:

Section 1. Territory annexed. The corporate limits of the
City of Detroit Lakes, Minnesota, are hereby extended to include
the unplatted territory described as follows, 60 (sixty) percent
or more of the perimeter of which territory is bordered by
territory already included within the City limits:

That part of the south half of Section 26, T139N, R41W
of the Fifth Principal Meridian more particularly
described as follows:

Commencing at the northeast corner of Lot 1, Block 1 of
Mountain View Third Addition, said plat is on file and
of record at the Becker County Recorder's Office; Thence
easterly, along the south right-of-way line of Trunk
Highway No. 34, 963.77 feet to the point of beginning;
Thence along current corporate limits the following
courses and distances; south, 1202.12 feet; west, 1091.80
feet more or less to the east right-of-way line of
Eleventh Avenue SE, south, 653.09 feet; east, 751.95 feet
more or less to the north/south quarter line of said
Section 26; north, along said north/south line, 404.52
feet; east, 1217.77 feet more or less to the centerline
of the Pelican River and the corporate limit courses;
Thence northerly, westerly, and again northerly along
said centerline, 1840 feet more or less to the south
right-of-way line of Trunk Highway No. 34; Thence
westerly along said right-of-way line, 185 feet; Thence
southerly, along said right-of-way line, 10 feet; Thence
westerly, along said right-of-way line, 126 feet more or
less to the point of beginning. Said tract contains 25.6
acres more or less.

Section 2. Population. The population of the territory is zero (0).

Section 3. Effective Date of Annexation. This ordinance takes effect upon passage and publication and the filing of certified copies as directed in Section 2 and approval by the Minnesota Municipal Board.

Passed and adopted this 16th day of August, 1990.

Approved this 16th day of August, 1990.

Richard Grabow

Richard Grabow, City Administrator

Larry G. Buboltz

Larry G. Buboltz, Mayor

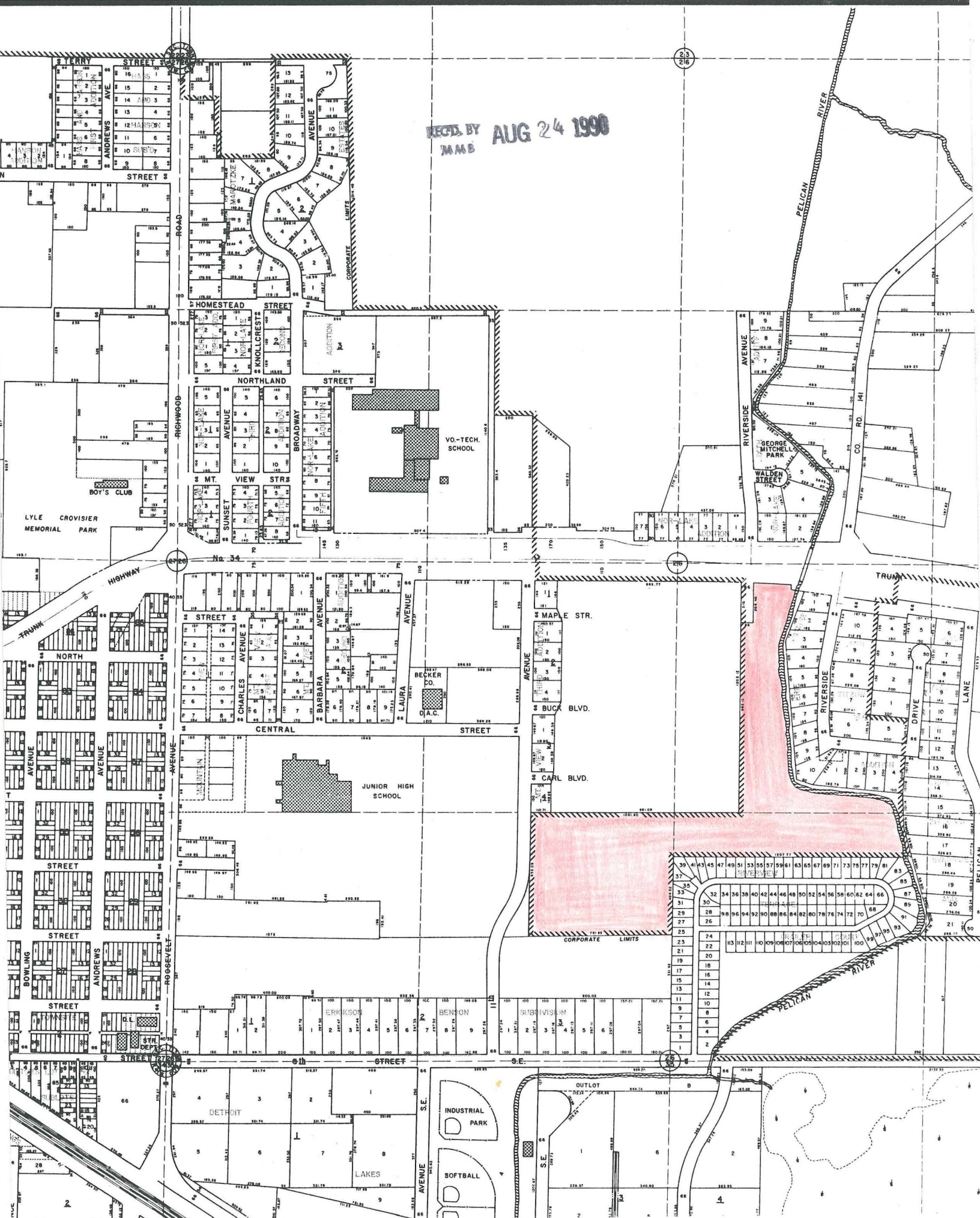
First Reading: August 7, 1990
Second Reading: August 16, 1990

STATE OF MINNESOTA
COUNTY OF BECKER
CITY OF DETROIT LAKES } ss

I do hereby certify that the foregoing resolution is a true and correct copy of a resolution presented to and adopted by the City Council of the City of Detroit Lakes, Minnesota, at a duly authorized meeting thereof held on the 16th day of August, 1990 as shown by the minutes of said meeting in my possession. I further certify that this resolution has not been rescinded or modified and is still in force and effect.

Date this 22nd day of August, 19 90

[Signature]
Asst. City Adm.



REC'D BY MMB
AUG 24 1990