

REC'D BY
MMB AUG 23 1990

Resolution No. 90-11

AN ORDINANCE EXTENDING THE CORPORATE LIMITS OF THE
CITY OF COKATO TO INCLUDE CERTAIN UNINCORPORATED
PLATTED LAND (UNPLATTED LAND NOT EXCEEDING 200 ACRES
IN AREA) ABUTTING UPON THE CITY LIMITS.

WHEREAS, a certain Petition dated 9/6/90 requesting annexation
of the territory hereinafter described was duly presented to the council on
the 9th day of July 1990 and;

WHEREAS, the Petition was signed by all owners; and

WHEREAS, no objections to the annexation have been received from the town
board, or the governing body of any municipality whose boundaries abut upon the
boundaries of the land to be annexed; and

WHEREAS, a hearing was not required; and,

WHEREAS, The land described in the Petition abuts upon the City limits at
the east boundary thereof;

The council of the City of Cokato, Minnesota, ordains;

Section 1. The City Council hereby determines (1) that the territory
described herein abuts upon the city limits and is urban or suburban in character;
and (2) that none of the territory is now included within the limits of any city.

Section 2. Territory Annexed. The corporate limits of the city are hereby
extended to include the unplatted land described as follows and the same is hereby
annexed to and included within the city as effectually as if it had originally been
a part thereof:

West 8 rods of NE 1 Quarter of SE
1 Quarter of Section 34, Township 119
Range 28

Section 3. Filing. The City Clerk is hereby directed to file certified
copies of this ordinance with the Minnesota Municipal Board, the Secretary of
State, the Town Clerk, and the County Auditor.

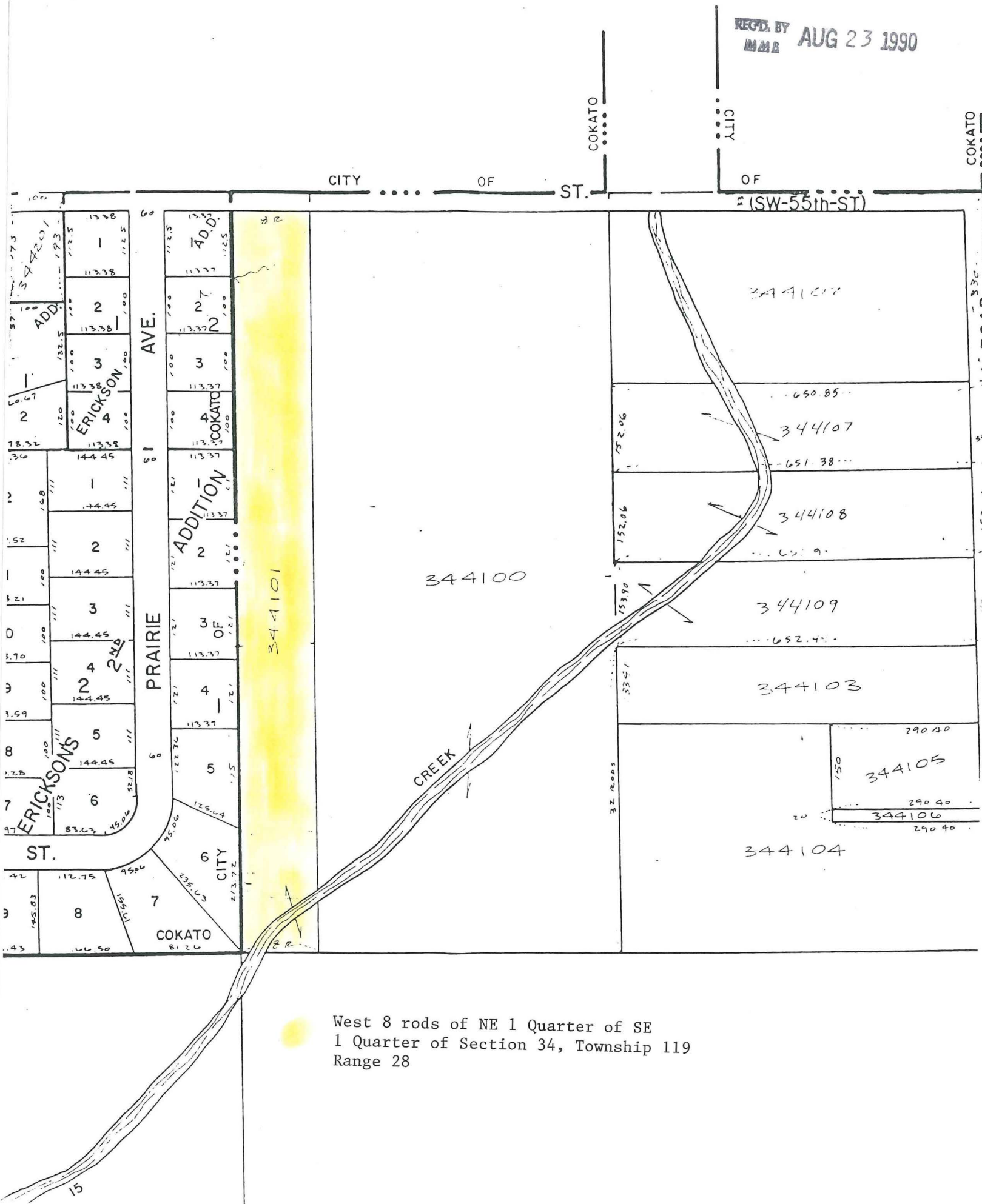
Section 4. Effective Date. This ordinance takes effect upon its passage
and publication and the filing of the certified copies as directed in Section 3,
and approval of the ordinance by the Minnesota Municipal Board.

Adopted by the council on this 20th day of August 1990

Peggy L. Carlson
Clerk

James L. Carlson
Mayor

REGD. BY
MMB AUG 23 1990



West 8 rods of NE 1 Quarter of SE
1 Quarter of Section 34, Township 119
Range 28