

NOV 17 1988

AN ORDINANCE EXTENDING THE CORPORATE LIMITS
OF SARTELL TO INCLUDE CITY OWNED
ROAD RIGHT-OF-WAY

WHEREAS, IT HAS BEEN DETERMINED AN ERROR WAS MADE IN DEFINING PROPERTY ANNEXED TO THE CITY OF SARTELL IN 1975 AND CITY OWNED ROAD RIGHT-OF-WAY WAS OMITTED FROM THE LEGAL DESCRIPTION, AND SUCH CITY LAND CONTAINS CITY UTILITIES; AND

WHEREAS, THE SARTELL CITY COUNCIL WISHES TO CORRECT THE ERROR AND PURSUANT TO M.S. 414.033, SUBD. 2, THE CITY CAN PROCEED TO ANNEX CITY OWNED LAND;

THE COUNCIL OF THE CITY OF SARTELL, MINNESOTA ORDAINS AS FOLLOWS:

SECTION 1. DETERMINATION OF NEED. THE CITY COUNCIL HEREBY DETERMINES THE ANNEXATION WILL BE TO THE BEST INTEREST OF THE CITY AND THE LAND DESCRIBED HEREIN IS CITY OWNED LAND AND IS URBAN IN CHARACTER AND NONE OF THE LAND IS NOW INCLUDED WITHIN THE LIMITS OF ANY OTHER INCORPORATED CITY.

SECTION 2. TERRITORY ANNEXED. THE CORPORATE LIMITS OF THE CITY OF SARTELL ARE HEREBY EXTENDED TO INCLUDE THE LAND DESCRIBED AS FOLLOWS AND THE SAME IS HEREBY ANNEXED TO AND INCLUDED WITHIN THE CITY AS EFFECTUALLY AS IT HAD ORIGINALLY BEEN A PART THEREOF, TO WIT;

THAT PART OF 9TH AVENUE NORTH THAT IS PLATTED IN MEYER PARK PLAT 5, ACCORDING TO THE PLAT THEREOF ON FILE AND OF RECORD IN THE OFFICE OF THE RECORDER, STEARNS COUNTY, MINNESOTA AND IS BOUNDED ON THE NORTH BY A STRAIGHT LINE DRAWN FROM THE SOUTHEAST CORNER OF LOT 7, BLOCK 1 TO THE SOUTHWEST CORNER OF LOT 1, BLOCK 4, ALL IN SAID MEYER PARK PLAT 5; AND IS BOUNDED ON THE SOUTH BY THE NORTH RIGHT-OF-WAY LINE OF TERRY LANE AS PLATTED IN MEYER PARK PLAT 3, ACCORDING TO THE PLAT THEREOF ON FILE AND OF RECORD IN THE OFFICE OF THE RECORDER, STEARNS COUNTY, MINNESOTA. SAID PARCEL CONTAINS 0.268 ACRES OF LAND, MORE OR LESS.

SAID PROPERTY BEING ANNEXED TO THE CITY OF SARTELL UNDER ZONING CLASSIFICATION OF R-1 SINGLE FAMILY RESIDENCE DISTRICT.


SECTION 3. FILING. THE CITY CLERK IS HEREBY DIRECTED TO FILE CERTIFIED COPIES OF THIS ORDINANCE WITH THE MINNESOTA MUNICIPAL BOARD, THE STEARNS COUNTY AUDITOR, THE TOWN OF LE SAUK AND THE SECRETARY OF STATE.

SECTION 4. EFFECTIVE DATE OF ANNEXATION. THIS ORDINANCE WILL TAKE EFFECT UPON PASSAGE AND PUBLICATION AND THE FILING OF THE CERTIFIED COPIES AS HEREIN DIRECTED, AND UPON THE MUNICIPAL BOARDS APPROVAL.

PASSED BY THE SARTELL CITY COUNCIL THIS 14th DAY OF November, 1988.


ROBERT C. BOGARD, MAYOR

ATTEST:


SUSAN J. MUELLER, ADM-CLERK-TREASURER

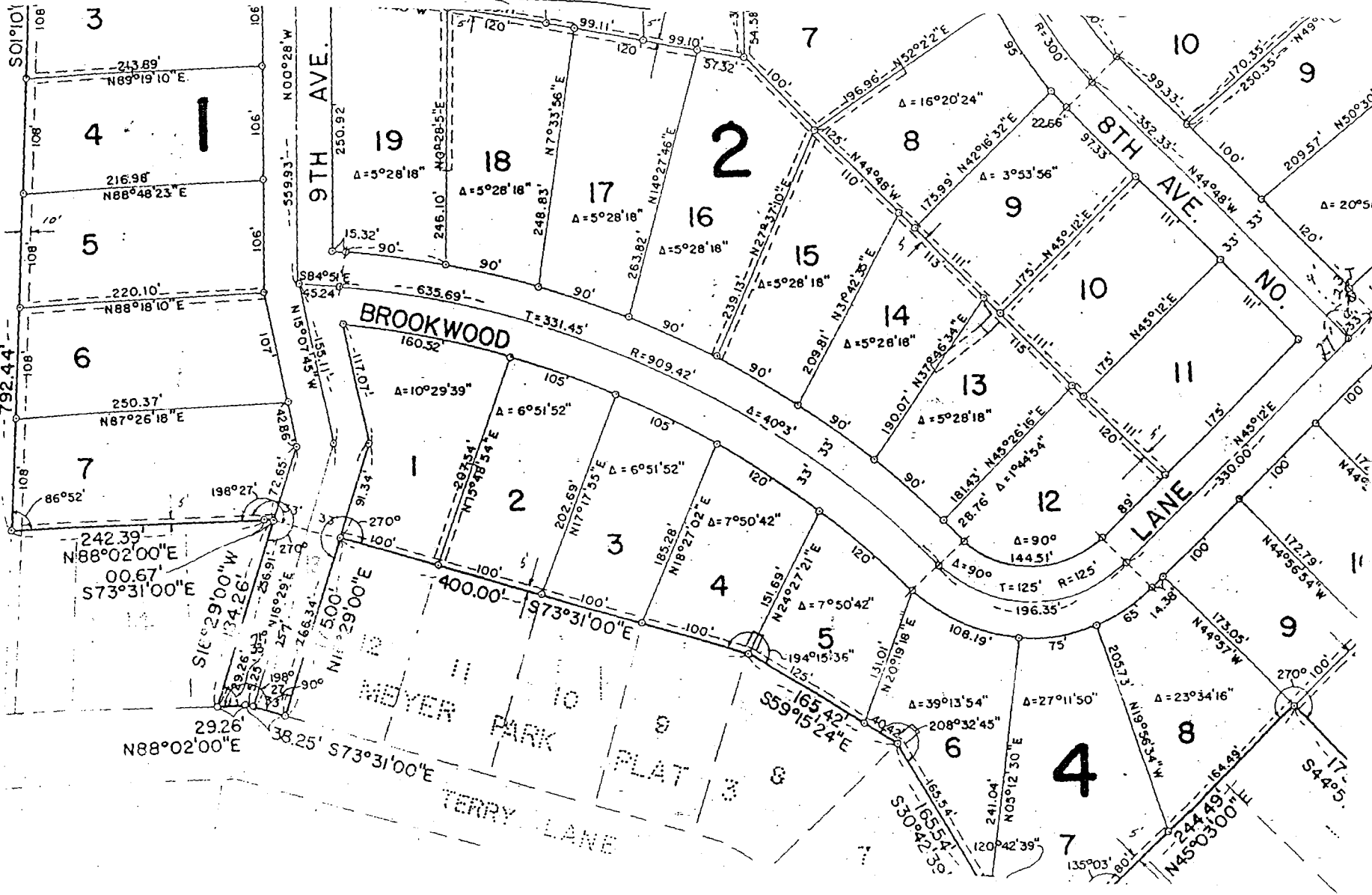
SEAL

PUBLISHED IN THE ST. CLOUD DAILY TIMES _____, 1988.

REC'D. BY NOV 17 1988
M.M.B.

MEYER PARK PLAT 5

UNPLATTED



N ↑

REC'D. BY OCT 03 1988
TAM B

LE SAUK TWP.
CITY OF SARTELL

Annexation
Area

