

PETITION FOR ANNEXATION

CITY OF WILLMAR
County of Kandiyohi
State of Minnesota

File No. 88-3
Area No. _____

TO HONORABLE COUNCIL OF THE CITY OF WILLMAR, MINNESOTA

We, the undersigned, are (the sole) ~~(all of the)~~ ~~(a majority of the)~~ owners of the following described property lying in the County of Kandiyohi, State of Minnesota:

Attached

Said property is unincorporated, abuts upon the limits of the City of Willmar, and is not included within any other municipality. ~~(Said property is platted and encompasses XXXXXX acres)~~ (Said property is unplatted and does not exceed 200 acres in area. The total acreage of such area is 48.1 acres.)

PETITIONERS RESPECTFULLY PETITION:

1. That pursuant to M.S. 414.033, said property be annexed to and incorporated within the City of Willmar.
2. That said property be zoned R-1.
3. That said property be served with City services/improvements/facilities/utilities, including sanitary and storm sewer, water, electricity and any other City utility required by the area and which is within the capability of the City to provide.

It is hereby certified and stated that said area is contiguous to the City of Willmar and is suitable and proper for annexation under the laws of the State of Minnesota and the ordinances of the City of Willmar; and

It is further certified and stated that we have read carefully the contents of the petition herein and understand the same and covenant and agree that by signing the same it is irrevocable as to us and is binding upon our heirs, representatives and assigns.

Dated: August 3, 1988

By: RRR Properties
[Signature]

By: _____

A filing fee of \$192 must accompany this Petition for Annexation.

Government Lot 6, Section 2, Township 119, Range 35, except the following described tracts:

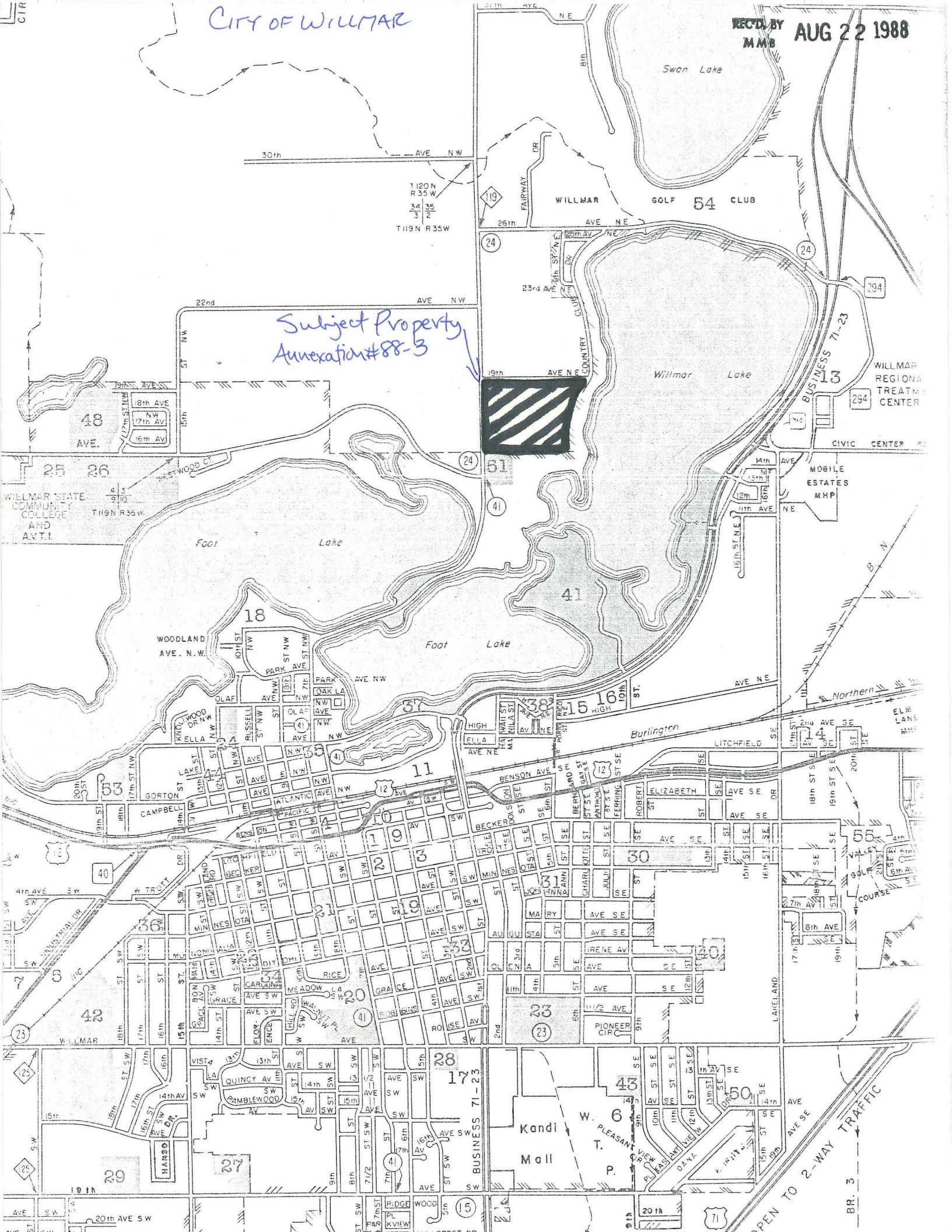
That part of Government Lot 6, Section 2 platted as First Addition to Lakewood on Willmar Lake,

Also, that part of Government Lot 6, Section 2 lying East of a line described as: Beginning at the Southwest corner of Lot 8 of Block 2 of First Addition to Lakewood on Willmar Lake, thence South on and along the line parallel to the West line of Section 2, to the South line of Government Lot 6 and there ending.

CITY OF WILLMAR

REC'D BY MMB AUG 22 1988

Subject Property Annexation #88-3



1120N R 35W
34 35
3 2
119N R 35W

48
8th AVE NW
17th Av NW
16th Av NW

25 26
WILLMAR STATE COMMUNITY COLLEGE AND AVTL
719N R 35W

18
WOODLAND AVE. N.W.

11
Burlington

40
WILLMAR

42
WILLMAR

29
HARBO

30th AVE NW

22nd AVE NW

15th ST NW

10th ST NW

10th ST NW

10th ST NW

10th ST NW

10th ST NW

10th ST NW

26th AVE NE

23rd AVE NE

19th AVE NE

16th ST NE

16th ST NE

16th ST NE

16th ST NE

16th ST NE

16th ST NE

24th ST NE

24th ST NE

24th ST NE

24th ST NE

24th ST NE

24th ST NE

24th ST NE

24th ST NE

24th ST NE

25th ST NE

25th ST NE

25th ST NE

25th ST NE

25th ST NE

25th ST NE

25th ST NE

25th ST NE

25th ST NE

26th AVE NE

26th AVE NE

26th AVE NE

26th AVE NE

26th AVE NE

26th AVE NE

26th AVE NE

26th AVE NE

26th AVE NE

27th AVE NE

27th AVE NE

27th AVE NE

27th AVE NE

27th AVE NE

27th AVE NE

27th AVE NE

27th AVE NE

27th AVE NE

28th AVE NE

28th AVE NE

28th AVE NE

28th AVE NE

28th AVE NE

28th AVE NE

28th AVE NE

28th AVE NE

28th AVE NE

29th AVE NE

29th AVE NE

29th AVE NE

29th AVE NE

29th AVE NE

29th AVE NE

29th AVE NE

29th AVE NE

29th AVE NE

30th AVE NE

30th AVE NE

30th AVE NE

30th AVE NE

30th AVE NE

30th AVE NE

30th AVE NE

30th AVE NE

30th AVE NE

20th AVE SW

15th ST SW

14th ST SW

13th ST SW

12th ST SW

11th ST SW

10th ST SW

9th ST SW

8th ST SW

7th ST SW

6th ST SW

5th ST SW

4th ST SW

3rd ST SW

2nd ST SW

1st ST SW

1st ST SW

1st ST SW

1st ST SW

1st ST SW

1st ST SW

1st ST SW

1st ST SW

1st ST SW

1st ST SW

1st ST SW

1st ST SW

1st ST SW

1st ST SW

1st ST SW

1st ST SW

1st ST SW

1st ST SW

1st ST SW

1st ST SW

1st ST SW

1st ST SW

1st ST SW

1st ST SW

1st ST SW

1st ST SW

1st ST SW

1st ST SW

1st ST SW

1st ST SW

1st ST SW

1st ST SW

1st ST SW

1st ST SW

1st ST SW

1st ST SW

1st ST SW

1st ST SW

1st ST SW

1st ST SW

1st ST SW

1st ST SW

1st ST SW

1st ST SW

1st ST SW

1st ST SW

1st ST SW

1st ST SW

1st ST SW

1st ST SW

1st ST SW

1st ST SW

1st ST SW

1st ST SW

1st ST SW

1st ST SW

1st ST SW

1st ST SW

1st ST SW

1st ST SW

1st ST SW

1st ST SW

1st ST SW

1st ST SW

1st ST SW

1st ST SW

1st ST SW

1st ST SW

1st ST SW

1st ST SW

1st ST SW

1st ST SW

1st ST SW

1st ST SW

1st ST SW

1st ST SW

1st ST SW

1st ST SW

1st ST SW

1st ST SW

1st ST SW

1st ST SW

1st ST SW

1st ST SW

1st ST SW

1st ST SW

1st ST SW

1st ST SW

1st ST SW

1st ST SW

1st ST SW

1st ST SW

1st ST SW

1st ST SW

1st ST SW

1st ST SW

1st ST SW

1st ST SW

1st ST SW

1st ST SW

1st ST SW

1st ST SW

1st ST SW

1st ST SW

1st ST SW

1st ST SW

1st ST SW

1st ST SW

1st ST SW

1st ST SW

1st ST SW

1st ST SW

1st ST SW

1st ST SW

1st ST SW

1st ST SW

1st ST SW

1st ST SW

1st ST SW

1st ST SW

1st ST SW

1st ST SW

1st ST SW

1st ST SW

1st ST SW

1st ST SW

1st ST SW

1st ST SW

1st ST SW

1st ST SW

1st ST SW

1st ST SW

1st ST SW

1st ST SW

1st ST SW

1st ST SW

1st ST SW

1st ST SW

1st ST SW

1st ST SW

1st ST SW

1st ST SW

1st ST SW

1st ST SW

1st ST SW

1st ST SW

1st ST SW

1st ST SW

1st ST SW

1st ST SW

1st ST SW

1st ST SW

1st ST SW

1st ST SW

1st ST SW

1st ST SW

1st ST SW

1st ST SW

1st ST SW

1st ST SW

1st ST SW

1st ST SW

1st ST SW

1st ST SW

1st ST SW

1st ST SW

1st ST SW

1st ST SW

1st ST SW

1st ST SW

1st ST SW

1st ST SW

1st ST SW

1st ST SW

1st ST SW

1st ST SW

1st ST SW

1st ST SW

1st ST SW

1st ST SW

1st ST SW

1st ST SW

1st ST SW

1st ST SW

1st ST SW

1st ST SW

1st ST SW

1st ST SW

1st ST SW

1st ST SW

1st ST SW

1st ST SW

1st ST SW

1st ST SW

1st ST SW

1st ST SW