

RESOLUTION

WHEREAS, the City Council of Richmond considered annexing the following described territory within the Town of Munson, to-wit:

All that part of the Northwest Quarter of the Southwest Quarter of the Northeast Quarter of Section 24, Township 123, Range 31, Stearns County, Minnesota lying northerly of the northerly right-of-way line of the Burlington Northern Railroad and lying west of Gary's Addition according to the recorded plat thereof on file and of record in the office of the Stearns County Recorder. Said tract containing 3.1 acres, more or less.

WHEREAS, the above described land is 40 acres or less in area and 60% or more of its perimeter is bordered by land within the City of Richmond.

NOW, THEREFORE, the City Council of Richmond hereby resolves to proceed to annex the above described real estate by ordinance and further authorizes the Mayor and City Clerk to take such steps as are necessary to accomplish said annexation.

Said resolution was made by Councilmember Dave Schackman and seconded by Councilmember Gerry Dait.

Voting in favor of the resolution were Councilmembers:

Dave Schackman, Gerry Dait, David Rausch & Wilfred Ressemann

Voting against said resolution were Councilmembers:

None

Absent from the meeting were Councilmembers:

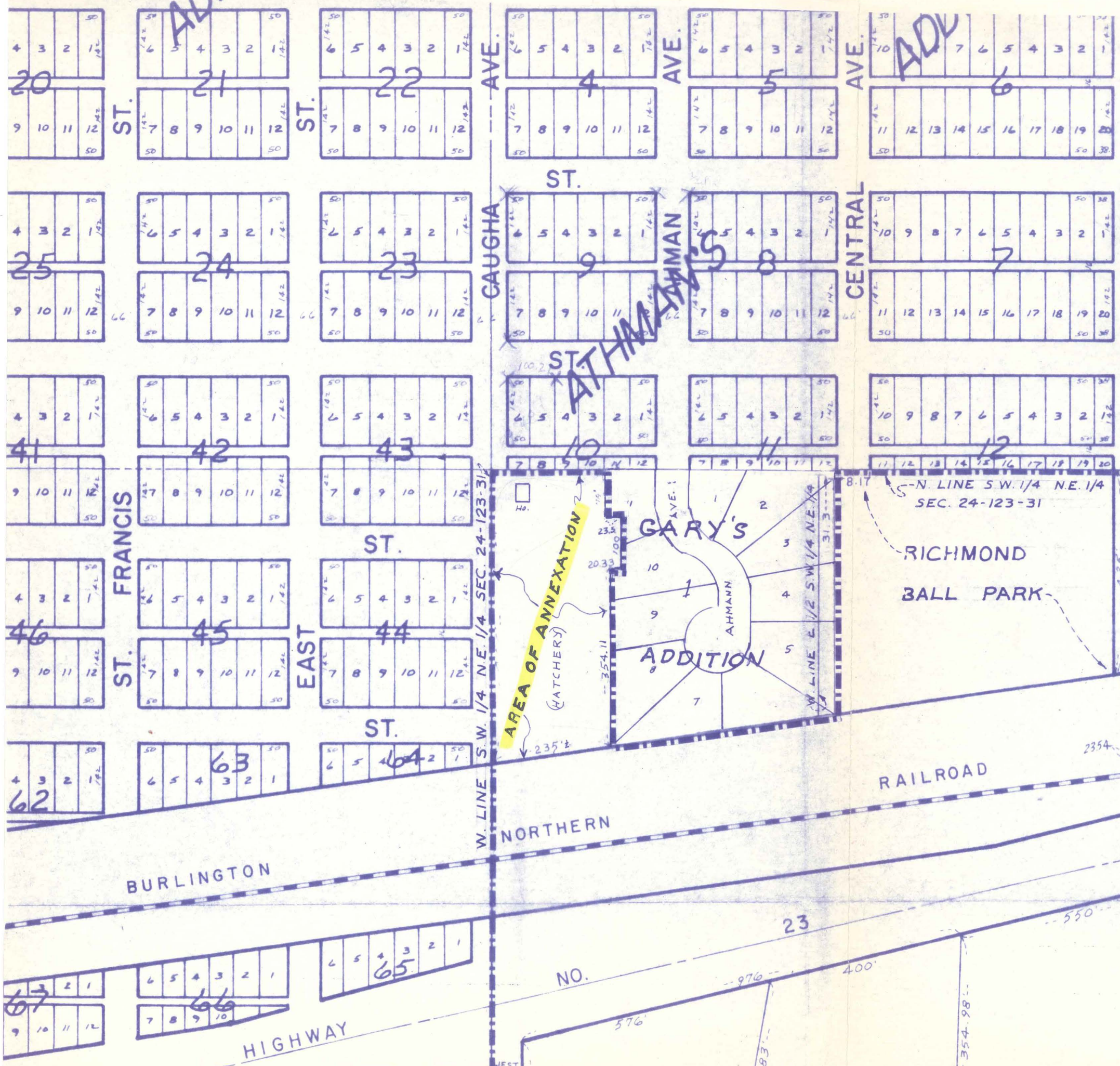
None

Said resolution was duly passed by the City Council at the City of Richmond on the 25 day of February, 1987.

Bessie Evans  
City Clerk

APPROVED:

Harold Ressemann  
Mayor



STATE HIGHWAY A CORPORATE LIMITS OF RICHMOND

SCALE: 1" = 200'



W. LINE S.W. 1/4 N.E. 1/4 SEC. 24-123-31

GARY'S ADDITION

N. LINE S.W. 1/4 N.E. 1/4 SEC. 24-123-31

RICHMOND BALL PARK

RAILROAD

BURLINGTON

GOV'T.

HIGHWAY

NORTHERN

NO.

23

550'

576'

400'

283'

86.45E

430'

WEST 66'

Ho.

AREA OF ANNEXATION (HATCHERY)

AHMANN AVE.

W. LINE E. 1/2 S.W. 1/4 N.E. 1/4

150'

425'

508'

547'

4948'

2354'

N. 82° 12' E. 923.94'

N. 66° 08' W 900.2'

20  
4 3 2 1  
9 10 11 12

ADV  
21  
6 5 4 3 2  
7 8 9 10 11 12

22  
6 5 4 3 2  
7 8 9 10 11 12

4  
6 5 4 3 2  
7 8 9 10 11 12

5  
6 5 4 3 2  
7 8 9 10 11 12

ADV  
6  
7 6 5 4 3 2  
11 12 13 14 15 16 17 18 19 20

25  
4 3 2 1  
9 10 11 12

24  
6 5 4 3 2  
7 8 9 10 11 12

23  
6 5 4 3 2  
7 8 9 10 11 12

9  
6 5 4 3 2  
7 8 9 10 11 12

8  
6 5 4 3 2  
7 8 9 10 11 12

7  
10 9 8 7 6 5 4 3 2  
11 12 13 14 15 16 17 18 19 20

41  
4 3 2 1  
9 10 11 12

42  
6 5 4 3 2  
7 8 9 10 11 12

43  
6 5 4 3 2  
7 8 9 10 11 12

10  
6 5 4 3 2  
7 8 9 10 11 12

11  
6 5 4 3 2  
7 8 9 10 11 12

12  
10 9 8 7 6 5 4 3 2  
11 12 13 14 15 16 17 18 19 20

46  
4 3 2 1  
9 10 11 12

45  
6 5 4 3 2  
7 8 9 10 11 12

44  
6 5 4 3 2  
7 8 9 10 11 12

10  
6 5 4 3 2  
7 8 9 10 11 12

11  
6 5 4 3 2  
7 8 9 10 11 12

12  
10 9 8 7 6 5 4 3 2  
11 12 13 14 15 16 17 18 19 20

62  
4 3 2 1  
9 10 11 12

63  
6 5 4 3 2 1

64  
6 5 4 3 2 1

67  
9 10 11 12

66  
6 5 4 3 2 1  
7 8 9 10

65  
6 5 4 3 2 1