

PUBLICATION NO. 3346

REC'D. BY
MMR DEC 14 1984

ORDINANCE NO. 703

AN ORDINANCE EXTENDING THE CORPORATE LIMITS OF
THE CITY OF HUTCHINSON TO INCLUDE CERTAIN
UNINCORPORATED TERRITORIES BORDERED BY LAND
WITHIN THE CITY LIMITS AND ABUTTING THEREON

WHEREAS, certain territory described below is not presently included within the corporate limits of any incorporated city or burrough; and

WHEREAS, sixty percent or more of the perimeter of this territory is bordered by lands already included within the corporate limits of the city and is deemed to be urban or suburban in character;

THE CITY COUNCIL OF HUTCHINSON ORDAINS:

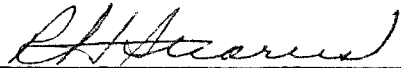
SECTION 1. Territory Annexed. The corporate limits of the City of Hutchinson, Minnesota, are hereby extended to include the unplatted territory described as follows, sixty percent or more of the perimeter of which territory is bordered by territory already included within the city limits and is less than 40 acres in area:

1. The East 33 feet of the North 3/4 of the NE 1/4 of Section 12, Township 116 North, Range 30 West. Lynn Township.
2. The West 33 feet of the NW 1/4 of Section 7, Township 116 North, Range 29 North. Hassan Valley Township.

SECTION 2. Filing. The City Clerk is directed to file certified copies of this ordinance with the Secretary of State, County Auditor of McLeod County, the Town Clerk of the effected township and the Minnesota Municipal Board.


SECTION 3. Effective Date of Annexation. This ordinance takes effect upon passage and publication and the filing of certified copies as directed in Section 2 and approval by the Minnesota Municipal Board.

Adopted by the City Council this 27th day of November, 1984.



Robert H. Stearns
Mayor

ATTEST:



Gary D. Plotz
City Clerk

VINEYARD UNITED METHODIST CHURCH

SW 1/4
SECTION 1
T-116N-R30W

NW 1/4
SECTION 12
T-116N-R30W

PROPOSED
CITY ANNEXATION

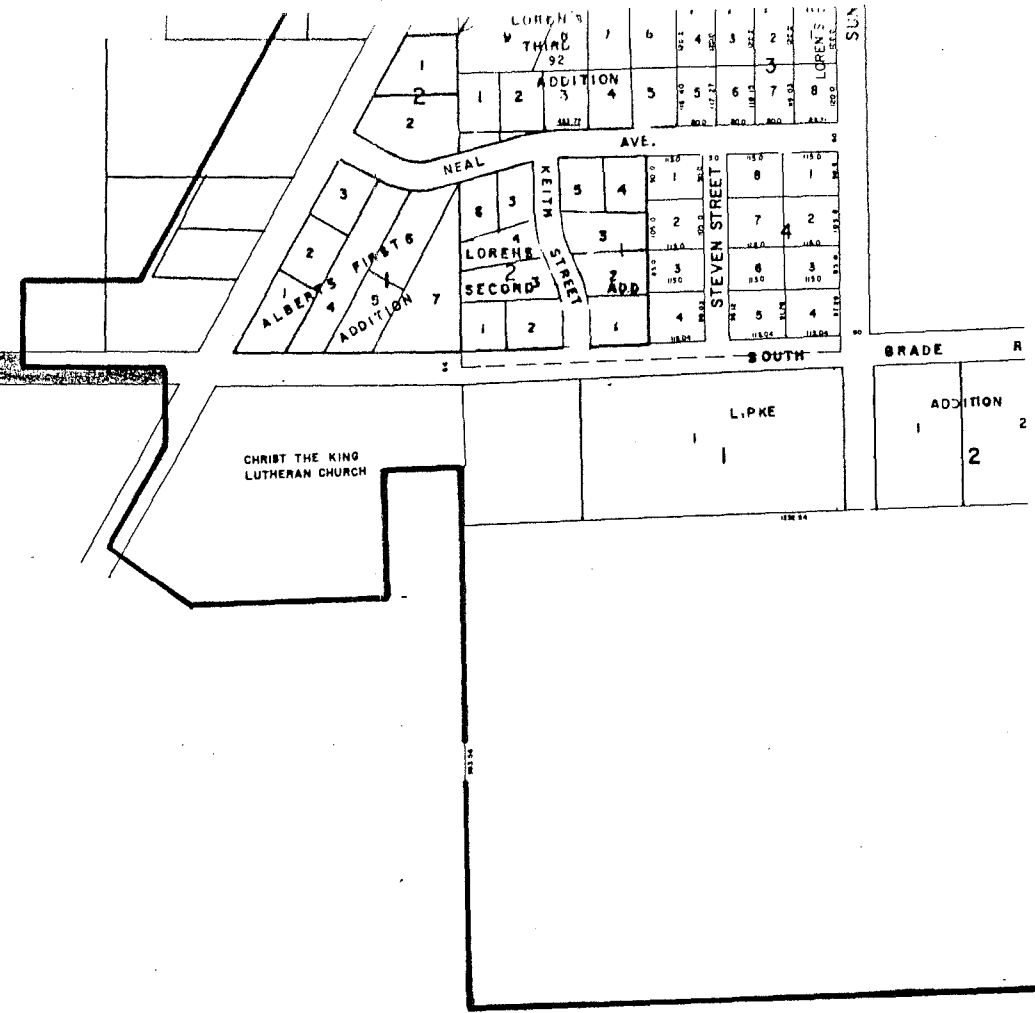
SECTION
CORNER

ROAD

CHRIST THE KING
LUTHERAN CHURCH

LIPKE

ADDITION
1
2



SEP 26 1984

EXHIBIT A