

AN ORDINANCE EXTENDING THE CORPORATE LIMITS OF THE CITY OF GROVE CITY TO INCLUDE CERTAIN UNINCORPORATED TERRITORY BORDERED BY LAND WITHIN THE CITY LIMITS AND ABUTTING THEREON.

NUMBER 1008

WHEREAS, certain territory described below is not presently included within the corporate limits of any incorporated city or borough; and,

WHEREAS, 60% or more of the perimeter of this territory is bordered by lands already included within the corporate limits of the City and is deemed to be urban or suburban in character;

The City Council of Grove City ordains:

Section 1. Territory Annexed. The corporate limits of the City of Grove City, Minnesota, are hereby extended to include the platted territory described as follows, 60% or more of the perimeter of which territory is bordered by territory already included within the city limit:

See attached Exhibit A.

Section 2. Filing. The City Clerk is directed to file certified copies of this ordinance with the Secretary of State, the County Auditor of the county in which the property is located, the Town Clerk of the affected township and the Minnesota Municipal Board.

Section 3. Effective Date of Annexation. This Ordinance takes effect upon passage and publication and the filing of certified copies as directed in Section 2 and approval by the Minnesota Municipal Board.

Adopted by the City Council of Grove City, Minnesota, August  
9, 1983.

R. J. Simmons  
Mayor

Attest:

Kristi Dragt  
Clerk

Published in August 18, 1983

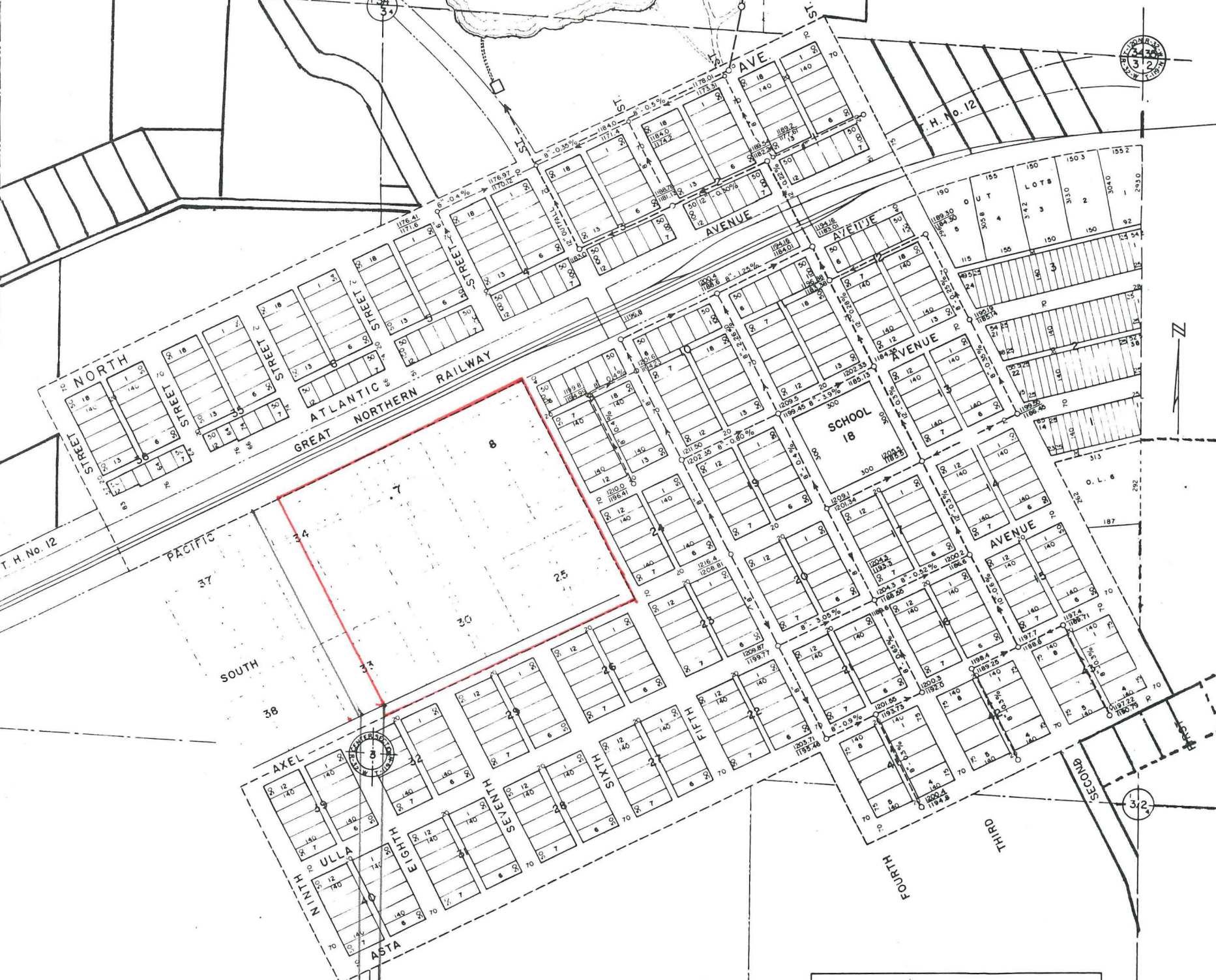
Corporate Limit -----

PLANT SITE

SAN. SEWER  
OUTFALL LINE

VILLAGE  
PARK

LAKE



GROVE CITY, MINN.

Scale: 1" = 200'

Drawn by: D.L.N.

Date: Aug., 1963

SANITARY SEWER SYSTEM

NOYES ENGINEERING SERVICE  
WILLMAR, MINN.

Plan No.