

CITY OF ORONOCO

REC'D BY
MMB

JUN 07 2002

RESOLUTION 02 – 06

JOINT RESOLUTION BETWEEN THE TOWNSHIP OF ORONOCO AND THE CITY OF ORONOCO DESIGNATING AN UNINCORPORATED AREA IS IN NEED OF ORDERLY ANNEXATION AND CONFERRING JURISDICTION OVER SAID AREA TO THE MINNESOTA OFFICE OF STRATEGIC AND LONG RANGE PLANNING PURSUANT TO MINNESOTA STATUTUE 414.0325

BE IT RESOLVED that the Township of Oronoco and the City of Oronoco hereby jointly agree to the following:

1. That the following described area in Oronoco Township is subject to orderly annexation pursuant to Minnesota Statutes 414.0325, and the parties hereto designate this area for orderly annexation, to wit:

That part of the Northeast Quarter of Section 19, Township 108 North, Range 14 West, Olmsted County, Minnesota, described as follows:

Beginning at the northeast corner of the Northeast Quarter of said Section 19; thence South 89 degrees 09 minutes 17 seconds West, assumed bearing, along the north line of said Northeast Quarter, 1665.67 feet to the northeast corner of Lot 1, Block 1, RIVERWOOD HILLS (the next 8 courses are along the easterly line of said RIVERWOOD HILLS) thence South 00 degrees 50 minutes 43 seconds East, 256.21 feet, thence South 86 degrees 00 minutes 47 seconds West, 286.62 feet; thence North 17 degrees 14 minutes 40 seconds West, 51.70 feet; thence North 89 degree 11 minutes 30 seconds West, 380.75 feet; thence South 29 degrees 38 minutes 05 seconds East, 456.29 feet; thence South 17 degrees 36 minutes 55 seconds West, 136.47 feet; thence South 22 degrees 36 minutes 56 seconds East, 327.89 feet; thence South 16 degrees 35 minutes 27 seconds West, 226.77 feet; thence South 65 degrees 07 minutes 43 seconds East, 199.06 feet; thence South 83 degrees 09 minutes 15 seconds East, 114.60 feet; thence North 00 degrees 04 minutes 46 seconds West, 125.78 feet; thence North 38 degrees 47 minutes 28 seconds West, 325.92 feet; thence South 83 degrees 11 minutes 34 seconds East, 578.74 feet; thence North 64 degrees 21 minutes 56 seconds East, 129.04 feet; thence South 25 degrees 04 minutes 11 seconds East, 304.47 feet; thence easterly 299.43 feet along a non-tangential curve, concave southerly, central angle of 30 degrees 15 minutes 28 seconds radius of 567.00 feet; and the chord of said curve bears North 73 degrees 46 minutes 41 seconds East, 295.96 feet; thence North 88 degrees 54 minutes 25 seconds East, tangent to said curve, 514.47 feet; thence North 01 degrees 05 minutes 35 seconds West, 250.64 feet; thence northerly 335.20 feet along a tangential curve, concave westerly, central angle of 36 degrees 01 minutes 58 seconds, radius of 533.00 feet, and the chord of said curve bears North 19 degrees 06 minutes 34 seconds West, 329.70 feet; thence North 52 degrees 52 minutes 27 seconds East, not tangent to said curve, 234.87 feet; thence South 41 degrees 00 minutes 09 seconds East, 206.00 feet; thence North 88 degrees 50 minutes 33 seconds East, 192.90 feet to the east line of said Northeast Quarter; thence North 01 degrees 09 minutes 06 seconds, West, along said east line, 654.05 feet to the point of beginning.

Containing in all, 49.26 acres, more or less.

2. That the Town Board of the Township of Oronoco, and the City Council of the City of Oronoco, upon passage and adoption of this resolution and upon the acceptance by the Minnesota Office of Strategic and Long Range Planning, confer jurisdiction upon the Minnesota Office of Strategic and Long Range Planning over the various provisions contained in this agreement.
3. That these certain properties which abut the City of Oronoco are presently urban or suburban in nature or are about to become so. Further, the City of Oronoco is capable of providing services to this area within a reasonable time, and the annexation is in the best interest of the area proposed for annexation. Therefore, these properties would be immediately annexed to the City of Oronoco, to wit:

That part of the Northeast Quarter of Section 19, Township 108 North, Range 14 West, Olmsted County, Minnesota, described as follows:

Beginning at the northeast corner of the Northeast Quarter of said Section 19; thence South 89 degrees 09 minutes 17 seconds West, assumed bearing, along the north line of said Northeast Quarter, 1665.67 feet to the northeast corner of Lot 1, Block 1, RIVERWOOD HILLS (the next 8 courses are along the easterly line of said RIVERWOOD HILLS) thence South 00 degrees 50 minutes 43 seconds East, 256.21 feet, thence South 86 degrees 00 minutes 47 seconds West, 286.62 feet; thence North 17 degrees 14 minutes 40 seconds West, 51.70 feet; thence North 89 degree 11 minutes 30 seconds West, 380.75 feet; thence South 29 degrees 38 minutes 05 seconds East, 456.29 feet; thence South 17 degrees 36 minutes 55 seconds West, 136.47 feet; thence South 22 degrees 36 minutes 56 seconds East, 327.89 feet; thence South 16 degrees 35 minutes 27 seconds West, 226.77 feet; thence South 65 degrees 07 minutes 43 seconds East, 199.06 feet; thence South 83 degrees 09 minutes 15 seconds East, 114.60 feet; thence North 00 degrees 04 minutes 46 seconds West, 125.78 feet; thence North 38 degrees 47 minutes 28 seconds West, 325.92 feet; thence South 83 degrees 11 minutes 34 seconds East, 578.74 feet; thence North 64 degrees 21 minutes 56 seconds East, 129.04 feet; thence South 25 degrees 04 minutes 11 seconds East, 304.47 feet; thence easterly 299.43 feet along a non-tangential curve, concave southerly, central angle of 30 degrees 15 minutes 28 seconds radius of 567.00 feet; and the chord of said curve bears North 73 degrees 46 minutes 41 seconds East, 295.96 feet; thence North 88 degrees 54 minutes 25 seconds East, tangent to said curve, 514.47 feet; thence North 01 degrees 05 minutes 35 seconds West, 250.64 feet; thence northerly 335.20 feet along a tangential curve, concave westerly, central angle of 36 degrees 01 minutes 58 seconds, radius of 533.00 feet, and the chord of said curve bears North 19 degrees 06 minutes 34 seconds West, 329.70 feet; thence North 52 degrees 52 minutes 27 seconds East, not tangent to said curve, 234.87 feet; thence South 41 degrees 00 minutes 09 seconds East, 206.00 feet; thence North 88 degrees 50 minutes 33 seconds East, 192.90 feet to the east line of said Northeast Quarter; thence North 01 degrees 09 minutes 06 seconds, West, along said east line, 654.05 feet to the point of beginning.

Containing in all, 49.26 acres, more or less.

4. Upon annexation, the City shall zone the parcel "R-3" Special Interim Residential District
5. Both the Township of Oronoco and the City of Oronoco agree that no alteration of the stated boundaries of this agreement is appropriate. Furthermore, each party agrees that no consideration by the Minnesota Office of Strategic and Long Range Planning is necessary.

JUN 07 2002

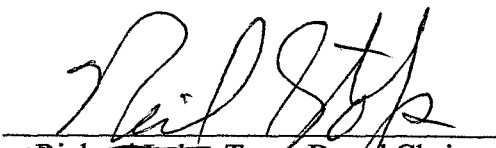
Upon receipt of this resolution, passed and adopted by each party, the Minnesota Office of Strategic and Long Range Planning may review and comment, but shall within thirty (30) days, order the annexation in accordance with the terms of the joint resolution.

6. Present and future owners of the lands annexed by this ordinance are hereby notified that in addition to the usual assessments, it is the intention of the Oronoco City Council to assess against benefited property all or a portion of the cost of any storm sewer, water tower, pumping station, and trunk line sanitary sewer construction, heretofore or hereafter undertaken to serve the area annexed when such municipal utilities became available within the city limit of Oronoco.

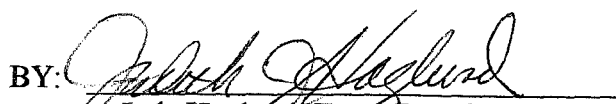
Approved by the Township of Oronoco this 3 day of June, 2002.

Township of Oronoco

BY:


~~Richard Lyke~~, Town Board Chair
Neil Stolp

BY:


Judy Haglund, Town Board Clerk

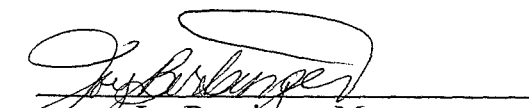
Resolution Introduced by: Bertsinger
Resolution Seconded by: VanSickle
Vote on Resolution Aye: VanSickle, Nelson, Acker, Bertsinger

Council Person Paul Pendergrass was not in attendance


Approved by the City of Oronoco this 15th day of April, 2002

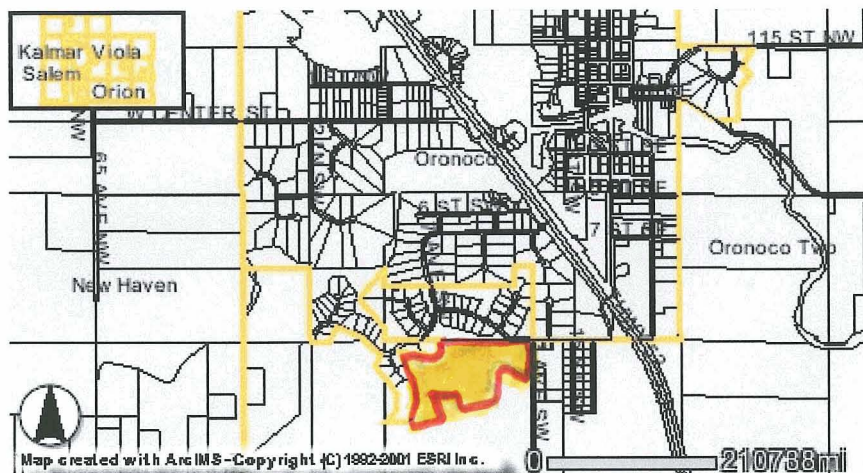
City of Oronoco

BY:


Joy Bertsinger, Mayor

BY:


Susan Kylo, City Clerk

REC'D BY
MMB

JUN 07 2002

