

**RESOLUTION****TO MUNICIPAL BOUNDARY ADJUSTMENTS/MINNESOTA OFFICE  
OF STRATEGIC AND LONG-RANGE PLANNING****A JOINT RESOLUTION OF THE CITY OF ROSEAU, MINNESOTA  
AND THE TOWNSHIP OF JADIS, ROSEAU COUNTY, MINNESOTA  
DESIGNATING AN UNINCORPORATED AREA AS IN NEED OF  
ORDERLY ANNEXATION AND CONFERRING JURISDICTION OVER  
SAID AREA ON MUNICIPAL BOUNDARY  
ADJUSTMENTS/MINNESOTA OFFICE OF STRATEGIC AND LONG-  
RANGE PLANNING PURSUANT TO MINNESOTA STATUTES  
414.0325.**

WHEREAS, the City of Roseau, Minnesota and the Township of Jadis, Roseau County, Minnesota desire to accommodate growth in the most orderly fashion; and

WHEREAS, a joint orderly annexation agreement between the parties hereto is beneficial to both parties from the standpoint of orderly planning and orderly transition of government within the area proposed to be annexed, and provides the guidelines under which such annexation shall take place.

NOW THEREFORE BE IT RESOLVED, by the City of Roseau, Minnesota (sometimes hereinafter referred to as "the City") and the Township of Jadis, Roseau County, Minnesota (sometimes hereinafter referred to as "the Township") that the property described herein is designated for orderly annexation by the City of Roseau and shall be annexed subject to the following terms and conditions:

1. The property which is covered by this orderly annexation agreement is legally described as follows:

The South Half of the Northeast Quarter (S $\frac{1}{2}$  NE $\frac{1}{4}$ ) of Section Twenty-two (22), Township One Hundred Sixty-two (162) North, Range Forty (40) West.

THE TOTAL ACREAGE OF THE ABOVE DESCRIBED IS:

80 ACRES  $\pm$ . (Hereinafter referred to as "the Property").

2. The parties hereby confer jurisdiction on the Municipal Boundary Adjustments/Minnesota Office of Strategic and Long-Range Planning over annexation of the Property and over the various provisions of this agreement. The Property is adjacent to the City of Roseau, Minnesota.
3. The two electrical suppliers affected by this annexation, to-wit: the City of Roseau, Minnesota and the Roseau Electric Cooperative, Inc., have agreed that there will be no change in electrical rates following the proposed annexation. The parties hereto therefore agree that the utility service notice, as required pursuant to M. S. 414.0325, Subd. 1a is unnecessary and should be waived.
4. The Property shall be zoned according to normal zoning procedure established in the City of Roseau Zoning Ordinance. The City of Roseau Zoning and Subdivision Regulation Ordinances shall guide the City in arriving at the appropriate zoning of the property. When the Property is annexed to the City it will be zoned Industrial Manufacturing (I.M.).

5. This Agreement will go into effect on the date that the orderly annexation is approved by Municipal Boundary Adjustments/Minnesota Office of Strategic and Long-Range Planning.
6. The City of Roseau, Minnesota and the Township of Jadis, Roseau County, Minnesota agree that no alteration of the stated boundaries of the Property is appropriate. Furthermore, the parties agree that no consideration by Municipal Boundary Adjustments/Minnesota Office of Strategic and Long-Range Planning is necessary. Upon receipt of this resolution, passed and adopted by each party, the Municipal Boundary Adjustments/Minnesota Office of Strategic and Long-Range Planning may review and comment, but shall, within thirty (30) days order the annexation in accordance with the terms of this joint resolution.

Approved by the City of Roseau, Minnesota, this 6 day of May, 2002.

CITY OF ROSEAU, MINNESOTA

By: \_\_\_\_\_

Jeff Pelowski, Its Mayor

ATTEST:

By: \_\_\_\_\_

Leland Lunos, Its City Clerk/Treasurer

Approved by the Township of Jadis, Roseau County, Minnesota, this 16 day of May, 2002.

TOWNSHIP OF JADIS, ROSEAU COUNTY, MINNESOTA

By: \_\_\_\_\_

Greg Halvorson, Its Chairman

By: \_\_\_\_\_

Carol Holland, Its Clerk

# JADIS

SEE MAPS 14 AND 15 FOR ADDITIONS TO JADIS TWP.

Copyright 1997 K.R. Thompson Co. - Reproduction only With Permission From Copyright Owner

Township 162 N.

Range 40 W.

City of Roseau

1997 Annexation  
(Polaris)

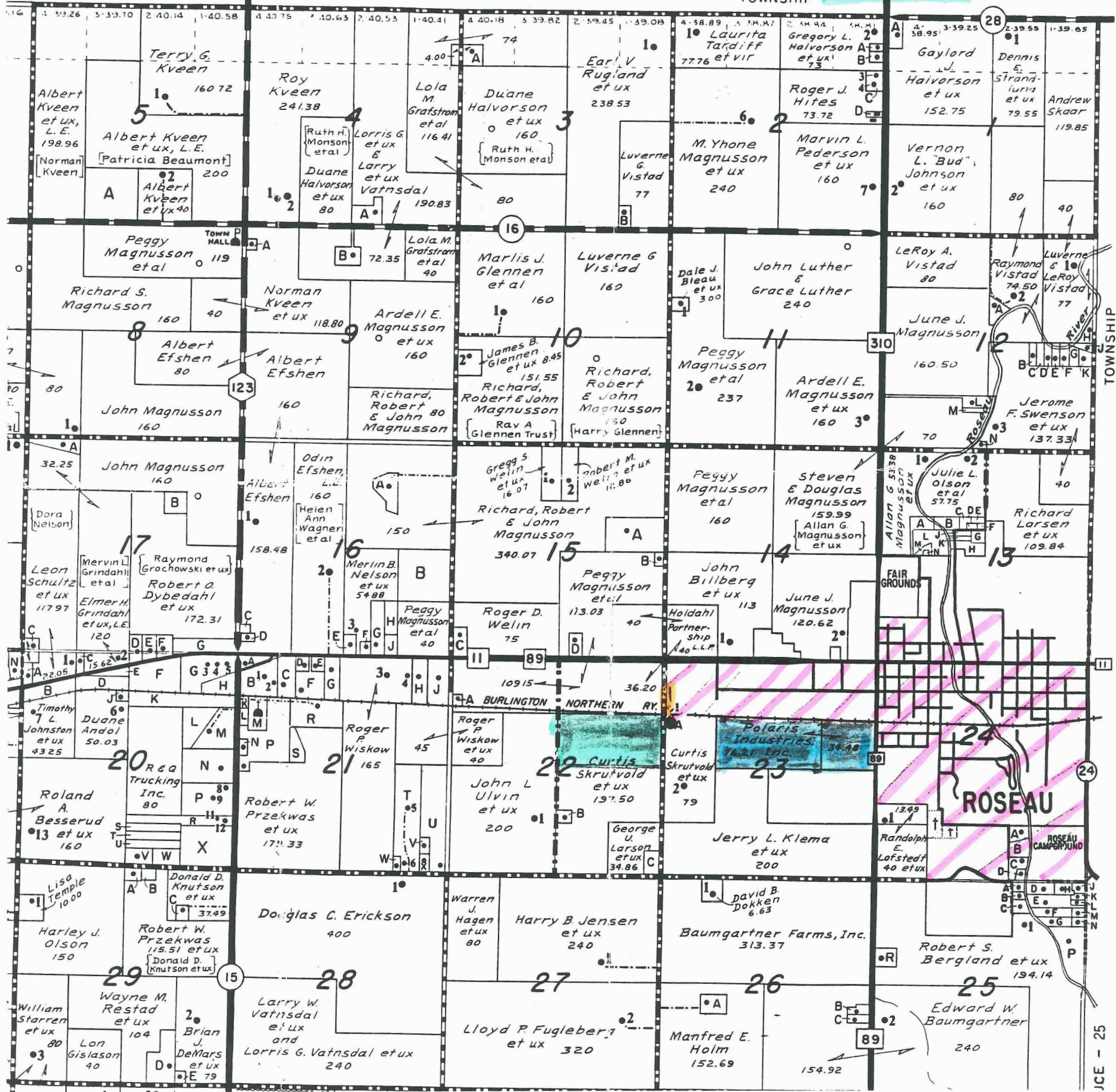
MAP  
24

18th Avenue - annexed in 2001

Property to be annexed by  
this resolution

JADIS ADDITION 8 UNORGANIZED - 14

TOWNSHIP



RECORDED BY  
MAY 20 2002

JCE - 25