

Joint Resolution of Mantorville Township and the City of Kasson, MN # 8.4-02

RESOLUTION ACCEPTING DON MARTI'S PETITION FOR ANNEXATION, AND ORDERING SAID ANNEXATION PURSUANT TO THE TERMS OF THE ORDERLY ANNEXATION AGREEMENT BETWEEN MANTORVILLE TOWNSHIP AND THE CITY OF KASSON

**BE IT RESOLVED BY THE CITY COUNCIL OF KASSON, MINNESOTA AND THE
TOWNSHIP OF MANTORVILLE, MN** as follows:

1. That the owner(s) of the area being petitioned for annexation is Don and Linda Marti, and the land is described as that of unplatted property containing approximately 6 acres more or less, of which its northern boundary abuts a portion of the City of Kasson corporate limits and is within the designated Orderly Annexation Area, pursuant to Minnesota State Statute § 414.0325.

The description of the property is as follows: Attached

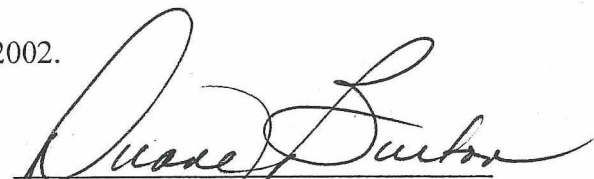
2. Request for annexation to the City of Kasson and detachment from Mantorville Township is for the purpose of platting and extending utility lines for future commercial development. Mantorville Township is unable to provide necessary services such as sanitary sewer, storm sewer, water and adequate police services and facilities.
3. No consideration by the Director of Strategic and Long Range Planning is necessary, although the Director may review and comment. However, within 30 days the Director shall order their annexation in accordance with the terms of said Orderly Annexation Agreement and joint resolution.

BE IT FURTHER RESOLVED that the City Council of the City of Kasson, Minnesota, accepts the petition for annexation as presented and hereby authorizes the City Administrator to file a copy of same with the Township Clerk and the Secretary of State.

BE IT FURTHER RESOLVED that the Township of Mantorville does not object to, nor will contest, the annexation of said lands into the Kasson corporate limits.


Passed and adopted this 28th day of August, 2002.


Chair, Township of Mantorville


Mayor, City of Kasson, MN

ATTEST:

Town Board Clerk

ATTEST:

City Administrator

RECD BY
MMB

OCT 09 2002

Legal Description for Marti Annexation:

The East 608.00 feet of the North 435.00 feet of the South $\frac{3}{4}$ of the SE $\frac{1}{4}$ of Section 33,
Township 107, Range 16, Dodge County, Minnesota

REC'D BY
M.M.B. OCT 09 2002

3334

EASTCREEK ADD'N.

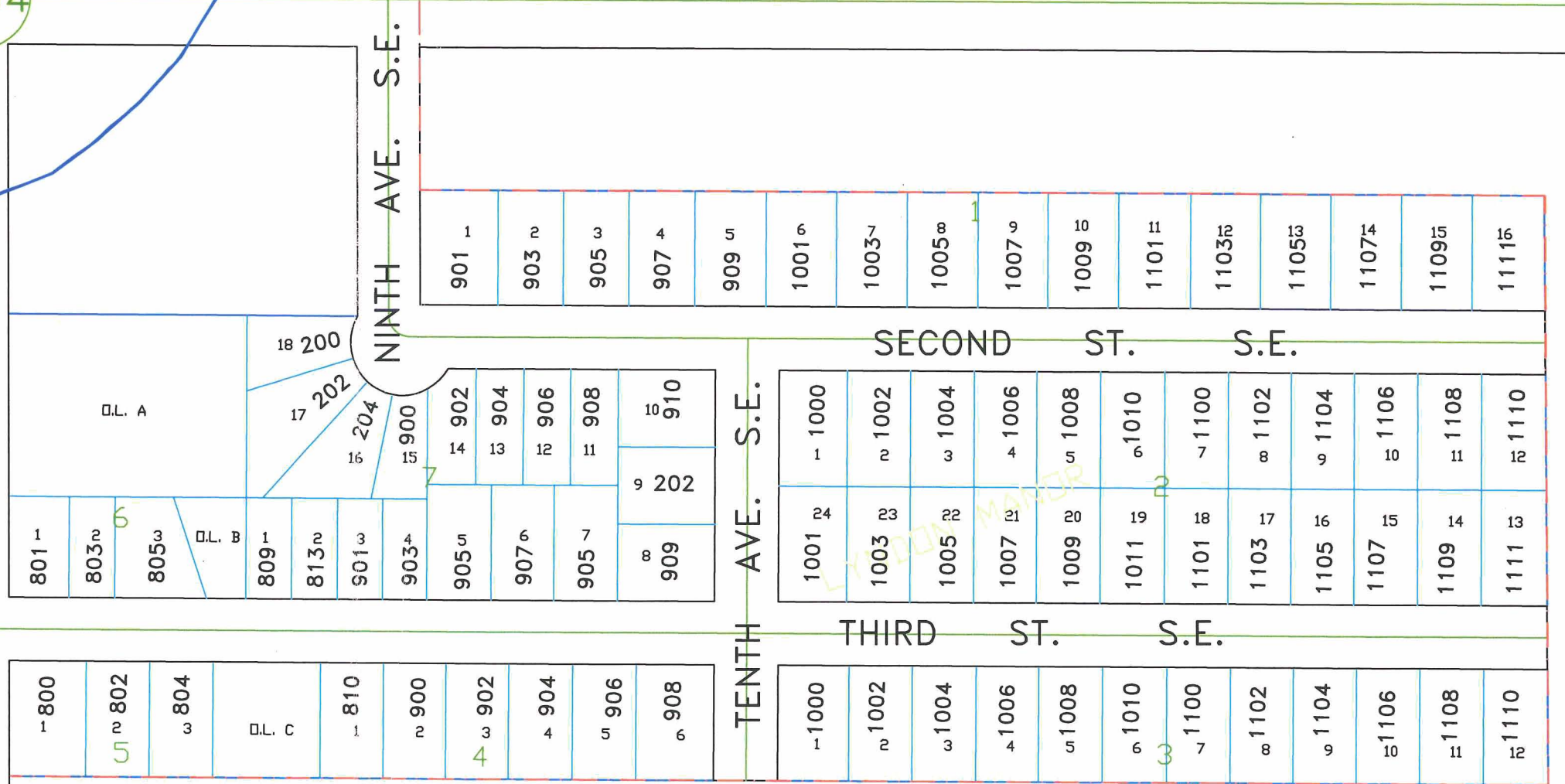
E 608.00' N 435.00' S 3/4 SE1/4 SEC. 33-107-16

NINTH AVE. S.E.

TENTH AVE. S.E.

SECOND ST. S.E.

THIRD ST. S.E.



1- 800	2- 802	3- 804	D.L. C	1- 810	2- 900	3- 902	4- 904	5- 906	6- 908
--------	--------	--------	--------	--------	--------	--------	--------	--------	--------

1- 1000	2- 1002	3- 1004	4- 1006	5- 1008	6- 1010	7- 1100	8- 1102	9- 1104	10- 1106	11- 1108	12- 1110
---------	---------	---------	---------	---------	---------	---------	---------	---------	----------	----------	----------

801 ¹	803 ²	805 ³	D.L. B	809 ¹	813 ²	801 ³	903 ⁴	905 ⁵	907 ⁶	905 ⁷	909 ⁸	910 ¹⁰
------------------	------------------	------------------	--------	------------------	------------------	------------------	------------------	------------------	------------------	------------------	------------------	-------------------

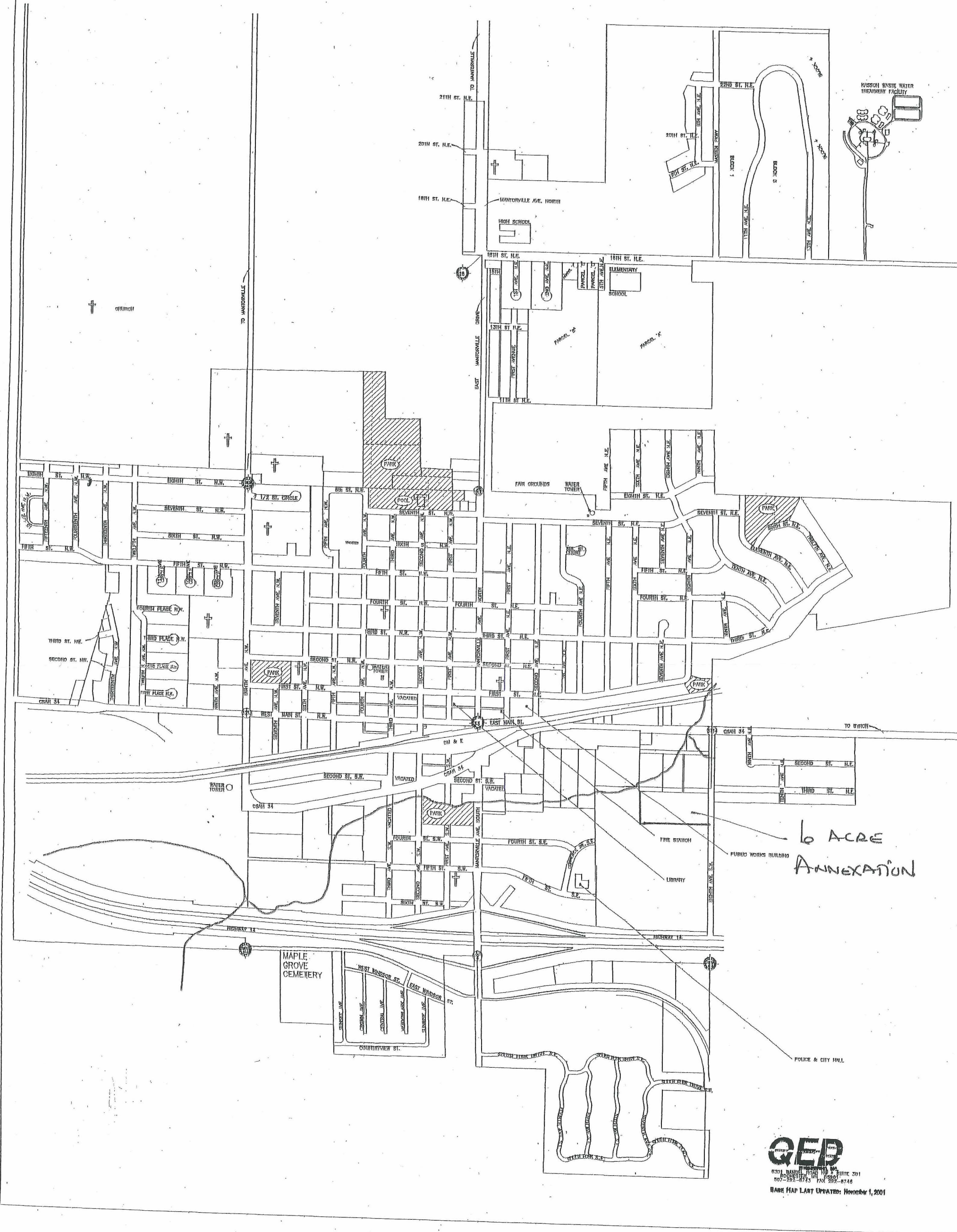
1001 ²⁴	1003 ²³	1005 ²²	1007 ²¹	1009 ²⁰	1011 ¹⁹	1101 ¹⁸	1103 ¹⁷	1105 ¹⁶	1107 ¹⁵	1109 ¹⁴	1111 ¹³
--------------------	--------------------	--------------------	--------------------	--------------------	--------------------	--------------------	--------------------	--------------------	--------------------	--------------------	--------------------

18 200	17 202	16 204	15 900	14 902	13 904	12 906	11 908	9 202	10 910
--------	--------	--------	--------	--------	--------	--------	--------	-------	--------

901 ¹	903 ²	905 ³	907 ⁴	909 ⁵	1001 ⁶	1003 ⁷	1005 ⁸	1007 ⁹	1009 ¹⁰	1101 ¹¹	1103 ¹²	1105 ¹³	1107 ¹⁴	1109 ¹⁵	1111 ¹⁶
------------------	------------------	------------------	------------------	------------------	-------------------	-------------------	-------------------	-------------------	--------------------	--------------------	--------------------	--------------------	--------------------	--------------------	--------------------



CITY OF KASSON, MINNESOTA



6 ACRE
ANNEXATION

QEP
ENGINEERING & PLANNING
801 BANNER ROAD, SUITE 201
ROCHESTER, MN 55901
507-252-8713 FAX 507-252-8716
BASE MAP LAST UPDATED: November 1, 2001

REC'D BY
MMB
OCT 09 2002