

REC'D BY
MMB

SEP 19 2001

JOINT RESOLUTION
CITY OF BELLE PLAINE RESOLUTION NO. 01-116
BELLE PLAINE TOWNSHIP OF SCOTT COUNTY RESOLUTION NO. 9401

**A RESOLUTION ANNEXING PROPERTY FROM BELLE PLAINE TOWNSHIP, SCOTT COUNTY,
INTO THE CITY OF BELLE PLAINE**

WHEREAS, this joint resolution designates an area in need of orderly annexation, provides for the conditions for its annexation, that no consideration by the Minnesota Office of Boundary Adjustments is necessary, but that the Office may review and comment, but shall, within 30 days, order the annexation in accordance with the terms of this resolution and that the City of Belle Plaine and Belle Plaine Township hereby jointly agree to the following:

1. That the following described area in Belle Plaine Township is subject to annexation pursuant to Minnesota Statutes 414.031 and the parties hereto designate this area for orderly annexation, to wit:
That part of the Southwest Quarter of the Northwest Quarter of Section 8, Township 113, Range 24, Scott County, Minnesota, lying westerly of the centerline of Kittson Boulevard.
2. That Belle Plaine Township and the City Council of the City of Belle Plaine, upon passage and adoption of this resolution, and upon acceptance by the Minnesota Planning Board annex the aforementioned property into the City of Belle Plaine.
3. The population of the property proposed for annexation is zero.
4. That there is no change in electrical service provided for the subject annexation, therefore, State Statute 414.0325 Subd 1 A, is not applicable.

NOW THEREFORE BE IT RESOLVED BY THE CITY COUNCIL OF THE CITY OF BELLE PLAINE, SCOTT COUNTY, MINNESOTA, THAT: The City of Belle Plaine approves the proposed annexation of the aforementioned property consisting of approximately 1.58 acres from Belle Plaine Township into the City of Belle Plaine.

REC'D BY
MMB

SEP 19 2001

Belle Plaine City Council Resolution 01-116 Page 2

Adopted by the City Council of the City of Belle Plaine, Scott County, Minnesota, this 4th day of September, 2001.



Maynard Harms
Mayor

Motion by:
Second by:

ATTEST:



Todd Bodern
City Administrator

Spalding:
O'Brien:
Trost:
Tikalsky:
Lange:
Harms:

NOW THEREFORE BE IT RESOLVED BY THE BELLE PLAINE TOWNSHIP BOARD, SCOTT COUNTY, MINNESOTA, THAT: It hereby approves the proposed annexation of the aforementioned property from Belle Plaine Township to the City of Belle Plaine.

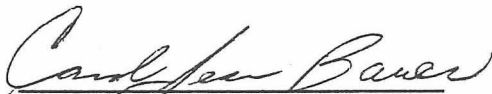
Adopted by the Belle Plaine Township Board, Scott County, Minnesota, this 4th day of September, 2001.



Belle Plaine Township Board Chair

Motion by: *Ron Solheid*
Second by: *Richard Klehn*

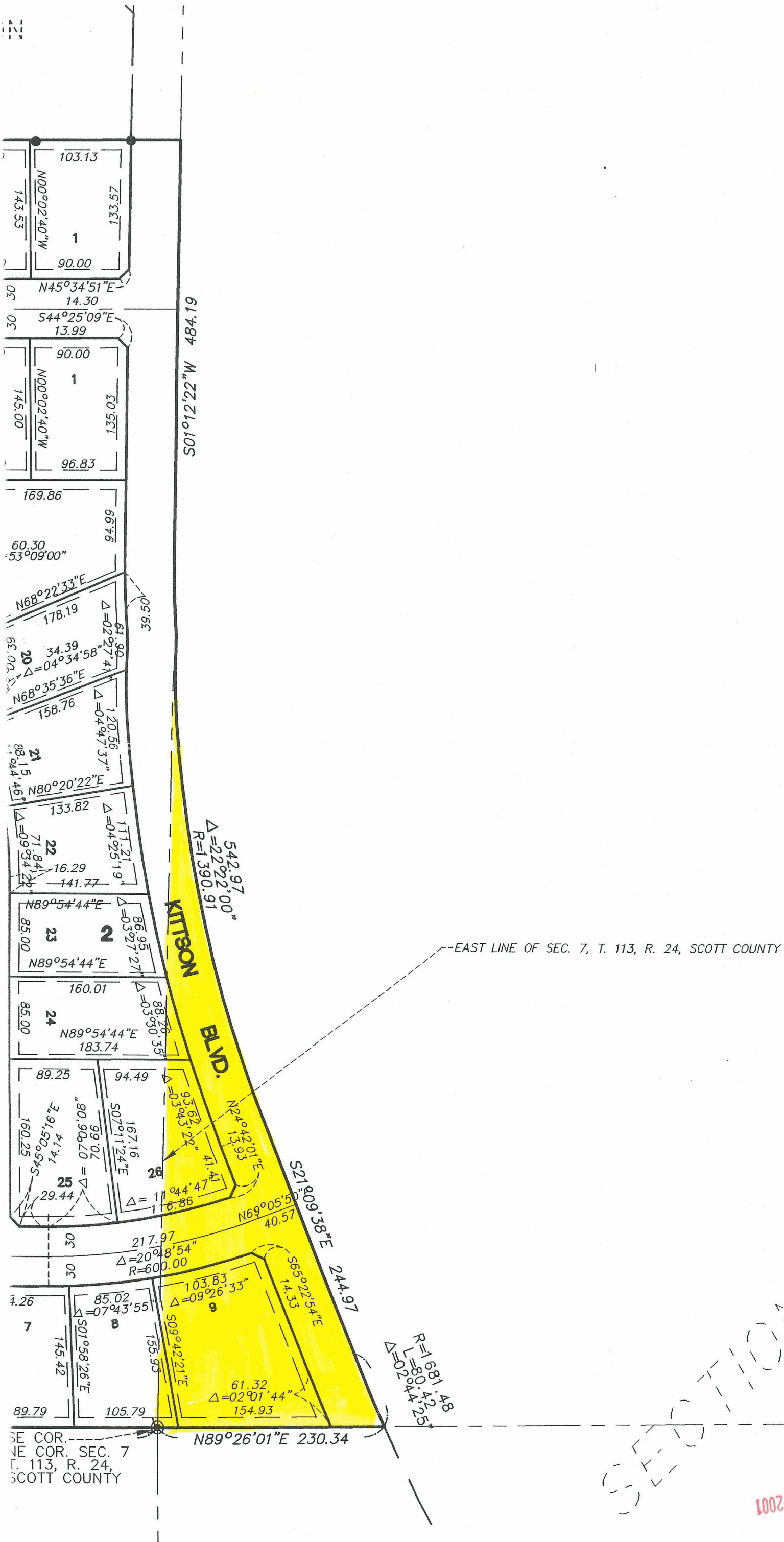
ATTEST:



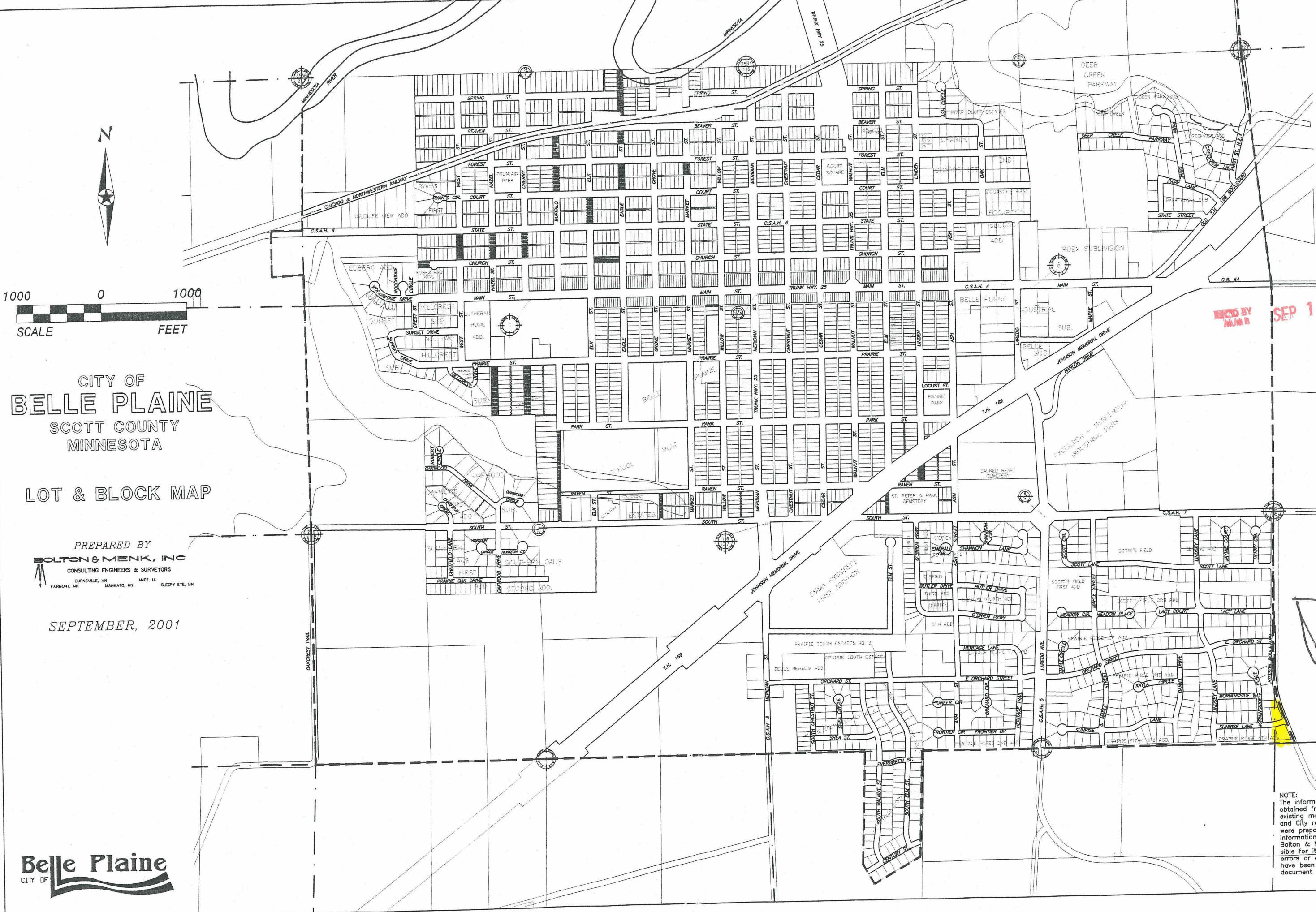
Carol Bauer
Belle Plaine Township Clerk

Board Member *Ron Solheid - Aye*
Board Member *Richard Klehn - Aye*
Board Member *Robert Koenig - Aye*

This document was drafted by:
City of Belle Plaine
420 East Main Street/P.O.Box 129
Belle Plaine, MN 56011
952-873-5553



RECEIVED BY
MMB
SEP 19 2001



RECD BY
M.A.M.B. SEP 19 2001

CITY OF
BELLE PLAINE
SCOTT COUNTY
MINNESOTA

LOT & BLOCK MAP

PREPARED BY
BOLTON & MENK, INC.
CONSULTING ENGINEERS & SURVEYORS
BURNSVILLE, MN AMES, IA
FARMINGTON, MN MANKATO, MN SLEEPY EYE, MN

SEPTEMBER, 2001



NOTE:
The information for this map was
obtained from various sources of
existing maps, construction plans,
and City records, some of which
were prepared by others. While this
information is believed to be reliable,
Bolton & Menk, Inc. is not respon-
sible for its accuracy nor for
errors or omissions which may
have been incorporated into this
document as a result.