

IN THE MATTER OF THE JOINT
RESOLUTION OF THE TOWNSHIP
OF LE RAY AND THE CITY OF
EAGLE LAKE DESIGNATING AN
UNINCORPORATED AREA AS IN
NEED OF ORDERLY ANNEXATION
AND CONFERRING JURISDICTION
OVER SAID AREA TO THE
MINNESOTA MUNICIPAL BOARD
PURSUANT TO M.S. 414.0325

The Township of Le Ray and the City of Eagle Lake hereby jointly agree to the following:

1. That the following described area in Le Ray Township is subject to orderly annexation pursuant to Minnesota Statutes 414.0325, and the parties hereto designate this area for orderly annexation, to wit:

That part of the First Rearrangement of Lots 1 and 4, Block One, Lohr And Saiki Subdivision, according to the plat thereof on file and of record with Blue Earth County Recorder, which lies within the East Half of the Northeast Quarter of Section 18, Township 108 North Range 25 West, Blue Earth County, Minnesota.

2. That this property which abuts the City of Eagle Lake is presently urban or suburban in nature or is about to become so. Further, the City of Eagle Lake is capable of providing services to this area within a reasonable time, and the annexation is in the best interest of the area proposed for annexation. Therefore, the aforementioned property will be immediately annexed to the City of Eagle Lake.
3. When the parcel is annexed, the City of Eagle Lake will reimburse Le Ray Township for the loss of taxes generated from the property annexed. If the annexation becomes effective on or before August 1st of the levy year, the City may levy on the annexed area beginning with the same levy year. If the annexation becomes effective after August 1st of the levy year, the Township may continue to collect property taxes on the property for that levy year and the City may not levy on the annexed area until the following year. For the year following the tax year in which the Township last collects a levy, the City will reimburse the Township ninety percent (90%) of the amount of taxes that were collected by the Township in the previous year. For each year after, the City will reimburse a declining amount adjusted by ten percent (10%) of the original property taxes up until and including the year that the reimbursement equals ten percent (10%) of the original property taxes. Thereafter, the City will no longer reimburse the Township.

At the City's discretion it may make one payment equal to the total of the nine (9) annual payments.

REC'D. BY
DAME JUN 29 2000

4. The population change with this annexation shall be 0.
5. Upon annexation the parcel shall be zoned L-I, Light Industrial.
6. Both the Township of Le Ray and the City of Eagle Lake agree that no alteration of the stated boundaries of this agreement is appropriate. Furthermore, each party agrees that no consideration by the Municipal Board is necessary. Upon receipt of this resolution, passed and adopted by each party, the Municipal Board may review and comment, but shall, within thirty (30) days, order the annexation in accordance with the terms of this joint resolution.

Approved by the Township of Le Ray this 13 day of June, 2000.

Le Ray Township

By: Jim KENYON
Chairman

By: [Signature]
Clerk

Approved by the City of Eagle Lake this 5th day of June, 2000.

City of Eagle Lake

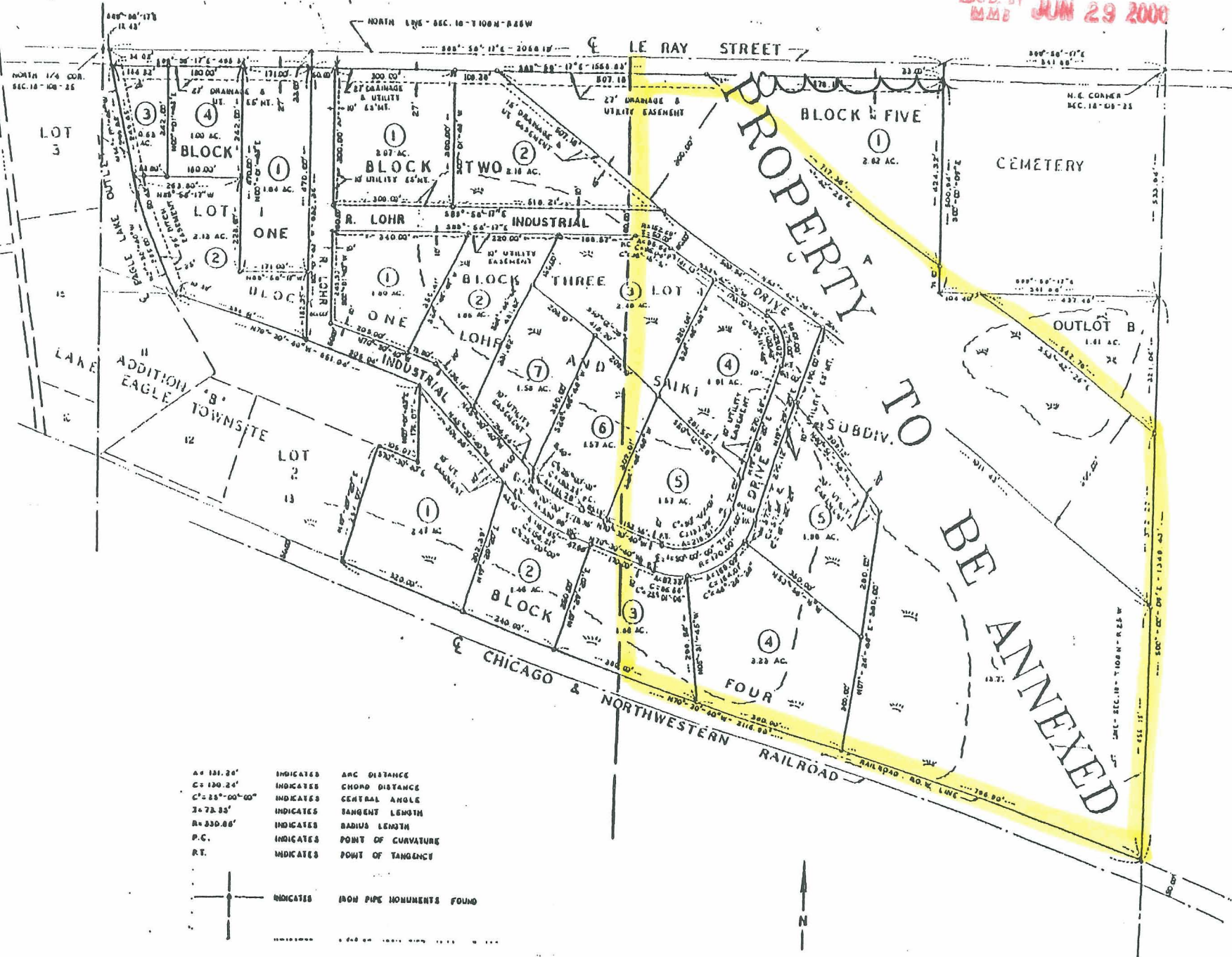
By: [Signature]
Mayor

ATTEST:

[Signature]
City Administrator

(SEAL)

REC'D. BY MMB JUN 29 2000



- A = 181.26' INDICATES ARC DISTANCE
- C = 120.24' INDICATES CHORD DISTANCE
- C' = 25°-00'-00" INDICATES CENTRAL ANGLE
- T = 72.35' INDICATES TANGENT LENGTH
- R = 330.00' INDICATES RADIUS LENGTH
- P.C. INDICATES POINT OF CURVATURE
- P.T. INDICATES POINT OF TANGENCY



I
C
C
T

B
d
H
B
d
C

T
I
T
V:

I
I
at

CITY OF EAGLE LAKE

CS41 NO 27

REC'D. BY
MMP JUN 29 2000

EAGLE LAKE

TH 14 BYPASS

C.R. / 35

C.R. / 36

CHICAGO & NORTHWESTERN

JOHN-SON LANE

VIEW ST

15 KAY ST

15 QUINN ST

15 CROOK ST

15 WESTON ST

15 CENTER ST

15 AVENUE

15 QUINN ST

15 CENTER ST

15 AVENUE

15 QUINN ST

15 CENTER ST

15 AVENUE

15 QUINN ST

15 CENTER ST

15 AVENUE

15 QUINN ST

15 CENTER ST

15 AVENUE

15 QUINN ST

15 CENTER ST

15 AVENUE

15 QUINN ST

15 CENTER ST

INDUSTRIAL DRIVE

TH 14 BYPASS

C.R. / 17

LE SUEUR AVENUE

ROCKWELL DR

GREENSIDE DRIVE

MATTHEW COURT

LINDA DR

LINDA DR

LINDA DR

LINDA DR

LINDA DR

LINDA DR

LINDA DR

LINDA DR

LE SUEUR AVENUE

LE SUEUR AVENUE

LE SUEUR AVENUE

LE SUEUR AVENUE

LE SUEUR AVENUE

LE SUEUR AVENUE

LE SUEUR AVENUE

LE SUEUR AVENUE

LE SUEUR AVENUE

LE SUEUR AVENUE

LE SUEUR AVENUE

LE SUEUR AVENUE

LE SUEUR AVENUE

LE SUEUR AVENUE

LE SUEUR AVENUE

LE SUEUR AVENUE

LE SUEUR AVENUE

LE SUEUR AVENUE

LE SUEUR AVENUE

LE SUEUR AVENUE

LE SUEUR AVENUE

LE SUEUR AVENUE

LE SUEUR AVENUE

LE SUEUR AVENUE

LE SUEUR AVENUE

LE SUEUR AVENUE

LE SUEUR AVENUE

LE SUEUR AVENUE

LE SUEUR AVENUE

LE SUEUR AVENUE

LE SUEUR AVENUE

LE SUEUR AVENUE

LE SUEUR AVENUE

LE SUEUR AVENUE

LE SUEUR AVENUE

LE SUEUR AVENUE

LE SUEUR AVENUE

LE SUEUR AVENUE

LE SUEUR AVENUE

LE SUEUR AVENUE

LE SUEUR AVENUE

LE SUEUR AVENUE

LE SUEUR AVENUE

LE SUEUR AVENUE

LE SUEUR AVENUE

LE SUEUR AVENUE

LE SUEUR AVENUE

LE SUEUR AVENUE

LE SUEUR AVENUE

LE SUEUR AVENUE

LE SUEUR AVENUE

LE SUEUR AVENUE

LE SUEUR AVENUE

LE SUEUR AVENUE

LE SUEUR AVENUE

LE SUEUR AVENUE

LE SUEUR AVENUE

LE SUEUR AVENUE

LE SUEUR AVENUE

LE SUEUR AVENUE

LE SUEUR AVENUE

LE SUEUR AVENUE

LE SUEUR AVENUE

LE SUEUR AVENUE

LE SUEUR AVENUE

LE SUEUR AVENUE

LE SUEUR AVENUE

LE SUEUR AVENUE

LE SUEUR AVENUE

LE SUEUR AVENUE

LE SUEUR AVENUE

LE SUEUR AVENUE

LE SUEUR AVENUE

LE SUEUR AVENUE

LE SUEUR AVENUE

LE SUEUR AVENUE

LE SUEUR AVENUE

LE SUEUR AVENUE

LE SUEUR AVENUE

LE SUEUR AVENUE

LE SUEUR AVENUE

LE SUEUR AVENUE

LE SUEUR AVENUE

LE SUEUR AVENUE

LE SUEUR AVENUE

LE SUEUR AVENUE

LE SUEUR AVENUE

LE SUEUR AVENUE

LE SUEUR AVENUE

LE SUEUR AVENUE

LE SUEUR AVENUE

LE SUEUR AVENUE

LE SUEUR AVENUE

LE SUEUR AVENUE

LE SUEUR AVENUE

LE SUEUR AVENUE

LE SUEUR AVENUE

LE SUEUR AVENUE

LE SUEUR AVENUE

LE SUEUR AVENUE

LE SUEUR AVENUE

LE SUEUR AVENUE

LE SUEUR AVENUE

LE SUEUR AVENUE

LE SUEUR AVENUE

LE SUEUR AVENUE

LE SUEUR AVENUE

LE SUEUR AVENUE

LE SUEUR AVENUE

LE SUEUR AVENUE

LE SUEUR AVENUE

LE SUEUR AVENUE

LE SUEUR AVENUE

LE SUEUR AVENUE

LE SUEUR AVENUE

LE SUEUR AVENUE

LE SUEUR AVENUE

LE SUEUR AVENUE

LE SUEUR AVENUE

LE SUEUR AVENUE

LE SUEUR AVENUE

LE SUEUR AVENUE

LE SUEUR AVENUE

LE SUEUR AVENUE

LE SUEUR AVENUE

LE SUEUR AVENUE

LE SUEUR AVENUE

LE SUEUR AVENUE

LE SUEUR AVENUE

LE SUEUR AVENUE

LE SUEUR AVENUE

LE SUEUR AVENUE

LE SUEUR AVENUE

LE SUEUR AVENUE

LE SUEUR AVENUE

LE SUEUR AVENUE

LE SUEUR AVENUE

LE SUEUR AVENUE

LE SUEUR AVENUE

LE SUEUR AVENUE

LE SUEUR AVENUE

LE SUEUR AVENUE

LE SUEUR AVENUE

LE SUEUR AVENUE

LE SUEUR AVENUE

LE SUEUR AVENUE

LE SUEUR AVENUE

LE SUEUR AVENUE

LE SUEUR AVENUE

LE SUEUR AVENUE

LE SUEUR AVENUE

LE SUEUR AVENUE

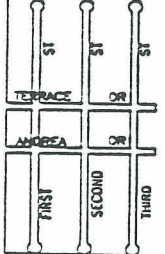
LE SUEUR AVENUE

LE SUEUR AVENUE

LE SUEUR AVENUE

LE SUEUR AVENUE

CS41 NO 27



Area Proposed to be Annexed