

REC'D. BY JUN 25 1998
M M B

RESOLUTION 98-32

Introduced by Councilor Sorenson

Seconded by Councilor Kron

A RESOLUTION OF ALBERT LEA TOWNSHIP AND THE CITY OF ALBERT LEA DESIGNATING AN UNINCORPORATED AREA AS IN NEED OF ORDERLY ANNEXATION AND CONFERRING JURISDICTION OVER SAID AREA TO THE MINNESOTA MUNICIPAL BOARD PURSUANT TO M.S.414.0325

WHEREAS, the Township of Albert Lea and the City of Albert Lea hereby jointly agree to the following; now, therefore

THE CITY OF ALBERT LEA RESOLVES:

Sec. 1. That the following described area in Albert Lea Township is subject to orderly annexation pursuant to Minnesota Statutes 414.0325, and the parties hereto designate this area for orderly annexation:

The North 30 acres of the SW 1/4 of Section 2-T102N-R21W, Freeborn County, Minnesota

AND

The South 40 acres of the North 70 acres of the SW 1/4 of Section 2-T102N-R21W, Freeborn County, Minnesota

AND

The South 10 acres of the North 80 acres of the SW 1/4 of Section 2-T102N-R21W, Freeborn County, Minnesota

AND

The South 20 acres of the North 100 acres of the SW 1/4 of Section 2-T102N-R21W, Freeborn County, Minnesota

ALSO

Commencing at the southeast corner of the SW 1/4 Section 2-T102N-R21W, Freeborn County, Minnesota; thence North 00° 38' 35" West a

distance of 990.00 feet, on an assumed bearing on the East line of said SW 1/4, to the point of beginning;

thence North 89° 59' 24" West a distance of 2033.09 feet, on a line parallel with the South line of said SW 1/4, to the point of intersection with the South line of the South 20 acres of the North 100 acres of said SW 1/4;

thence North 89° 43' 54" East a distance of 2033.00 feet, on the south line of the South 20 acres of the North 100 acres of said SW 1/4, to a point on the east line thereof;

thence South 00° 38' 55" East a distance of 9.88 feet, on the East line of said SW 1/4, to the point of beginning;

less Right-of-Way for Interstate Highway No. 35, as shown on Highway Right-of-Way Plat No. 24-2, as the same is platted and recorded in the office of the County Recorder of Freeborn County, Minnesota

AND

Commencing at the SW corner of the South 20 acres of the North 100 acres of the SW 1/4, Section 2-T102N-R21W; thence North 00° 33' 43" West a distance of 3.60', on an assumed bearing on the West line of said SW 1/4 to the NW corner of the South 60 acres of said SW 1/4;

thence South 89° 59' 24" East a distance of 741.22' on the North line of said South 60 acres, to the point of intersection with the South line of the South 20 acres of the North 100 acres of said Section 2; thence South 89° 43' 54" West a distance of 741.19', on the South line of said South 20 acres of the North 100 acres, to the point of beginning.

LESS AND EXCEPTING THEREFROM THE FOLLOWING:

1. Right-of-Way for Interstate Highway No. 35, as shown on Highway Right-of-Way Plat No. 24-2, as the same as platted and recorded in the office of the County Recorder of Freeborn County, Minnesota.
2. Right-of-Way for Trunk Highway No. 65 as shown in Book 73 of Misc., page 637 in the office of the County Recorder of Freeborn County, Minnesota.
3. All that part of the described premises lying easterly of Interstate Highway No. 35, as shown on Highway Right-of-Way Plat No. 24-2, as

REC'D. BY JUN 25 1998
M M B

the same as platted and recorded in the office of the County Recorder of Freeborn County, Minnesota.

Sec. 2. That the Township of Albert Lea does, upon passage of this resolution and its adoption by the City Council of the City of Albert Lea, Minnesota, and upon acceptance by the Municipal Board, confer jurisdiction upon the Minnesota Municipal Board over the various provisions contained in this agreement.

Sec. 3. That certain properties abutting the City of Albert Lea are presently urban or suburban in nature or about to become so. Further, the City of Albert Lea is capable of providing services to this area within a reasonable time, or the existing township form of government is not adequate to protect the public health, safety or welfare, or the annexation would be in the best interests of the area proposed for annexation. Therefore, these properties would be immediately annexed to the City of Albert Lea. This area is described as follows:

The North 30 acres of the SW 1/4 of Section 2-T102N-R21W, Freeborn County, Minnesota

AND

The South 40 acres of the North 70 acres of the SW 1/4 of Section 2-T102N-R21W, Freeborn County, Minnesota

AND

The South 10 acres of the North 80 acres of the SW 1/4 of Section 2-T102N-R21W, Freeborn County, Minnesota

AND

The South 20 acres of the North 100 acres of the SW 1/4 of Section 2-T102N-R21W, Freeborn County, Minnesota

ALSO

Commencing at the southeast corner of the SW 1/4 Section 2-T102N-R21W, Freeborn County, Minnesota; thence North 00° 38' 35" West a distance of 990.00 feet, on an assumed bearing on the East line of said SW 1/4, to the point of beginning;

thence North 89° 59' 24" West a distance of 2033.09 feet, on a line parallel with the South line of said SW 1/4, to the point of intersection with the South line of the South 20 acres of the North 100 acres of said SW 1/4;

thence North 89° 43' 54" East a distance of 2033.00 feet, on the south line of the South 20 acres of the North 100 acres of said SW 1/4, to a point on the east line thereof;

thence South 00° 38' 55" East a distance of 9.88 feet, on the East line of said SW 1/4, to the point of beginning;

less Right-of-Way for Interstate Highway No. 35, as shown on Highway Right-of-Way Plat No. 24-2, as the same is platted and recorded in the office of the County Recorder of Freeborn County, Minnesota

AND

Commencing at the SW corner of the South 20 acres of the North 100 acres of the SW 1/4, Section 2-T102N-R21W; thence North 00° 33' 43" West a distance of 3.60', on an assumed bearing on the West line of said SW 1/4 to the NW corner of the South 60 acres of said SW 1/4;

thence South 89° 59' 24" East a distance of 741.22' on the North line of said South 60 acres, to the point of intersection with the South line of the South 20 acres of the North 100 acres of said Section 2; thence South 89° 43' 54" West a distance of 741.19', on the South line of said South 20 acres of the North 100 acres, to the point of beginning.

LESS AND EXCEPTING THEREFROM THE FOLLOWING:

1. Right-of-Way for Interstate Highway No. 35, as shown on Highway Right-of-Way Plat No. 24-2, as the same as platted and recorded in the office of the County Recorder of Freeborn County, Minnesota.
2. Right-of-Way for Trunk Highway No. 65 as shown in Book 73 of Misc., page 637 in the office of the County Recorder of Freeborn County, Minnesota.
3. All that part of the described premises lying easterly of Interstate Highway No. 35, as shown on Highway Right-of-Way Plat No. 24-2, as the same as platted and recorded in the office of the County Recorder of Freeborn County, Minnesota.

Sec. 4. That the City agrees to investigate the possibility of sharing facilities, equipment, and personnel with the township to forestall the duplication of facilities and to reduce the overall costs of government in the area.

Sec. 5. That the effect of annexation on population shall be resolved whenever possible by agreement of parties. If there is failure to reach such agreement, the question shall be resolved by the Minnesota Municipal Board.

Sec. 6. That no alteration of the area is appropriate, that this resolution sets conditions for annexation and municipal board consideration is not necessary.


Sec. 7. That planning throughout the orderly annexation area shall be pursuant to Minnesota Statutes 414.0325. Planning and zoning for the area shall be provided by the City of Albert Lea. That the property included in this annexation shall be zoned B-2.

Sec. 8. That any person owning lands annexed to the City pursuant to this agreement shall have all rights provided by statute and Resolution 87-46 of the City of Albert Lea governing special assessments. That the customary hookup charges approved for property in the City shall be used for connection to City utilities.

Sec. 9. That reading of this resolution is waived by Council consent.

Introduced, read and passed February 9, 1998.

Attest:



City Clerk

By: 

Mayor

REC'D. BY JUN 25 1998
MAB

TOWNSHIP OF ALBERT LEA

Passed and adopted by the Township Board of the Township of
Albert Lea this 2nd day of June, 1998.

Attest:

Marilyn A. Roche
Township Clerk

By: Larry Leland
Chair

STATE OF MINNESOTA }
COUNTY OF FREEBORN } ss
CITY OF ALBERT LEA

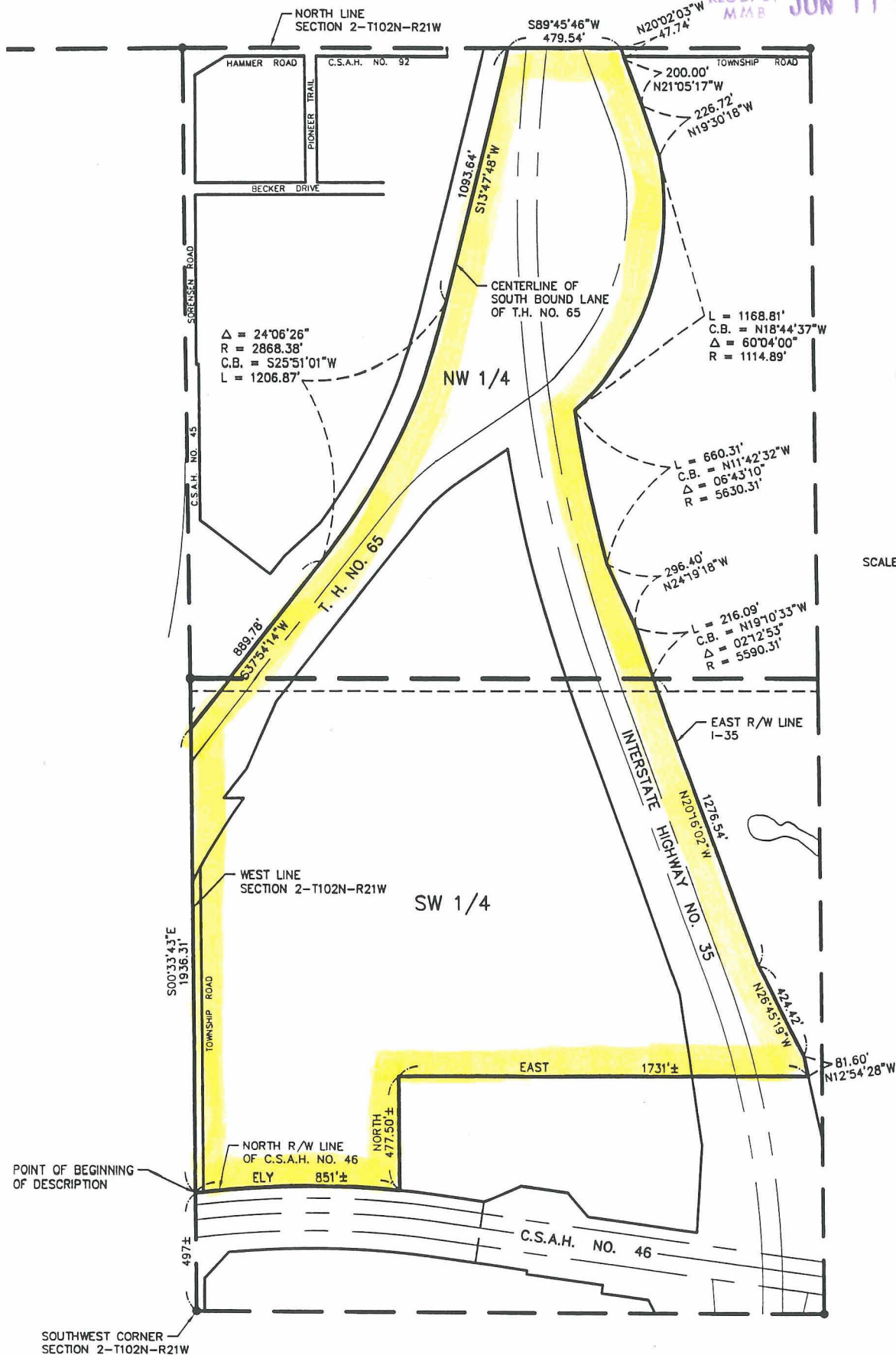
I hereby certify that I have compared the
within instrument with the original now on file
in my office and that it is a true and correct
copy of the same and of the whole thereof.

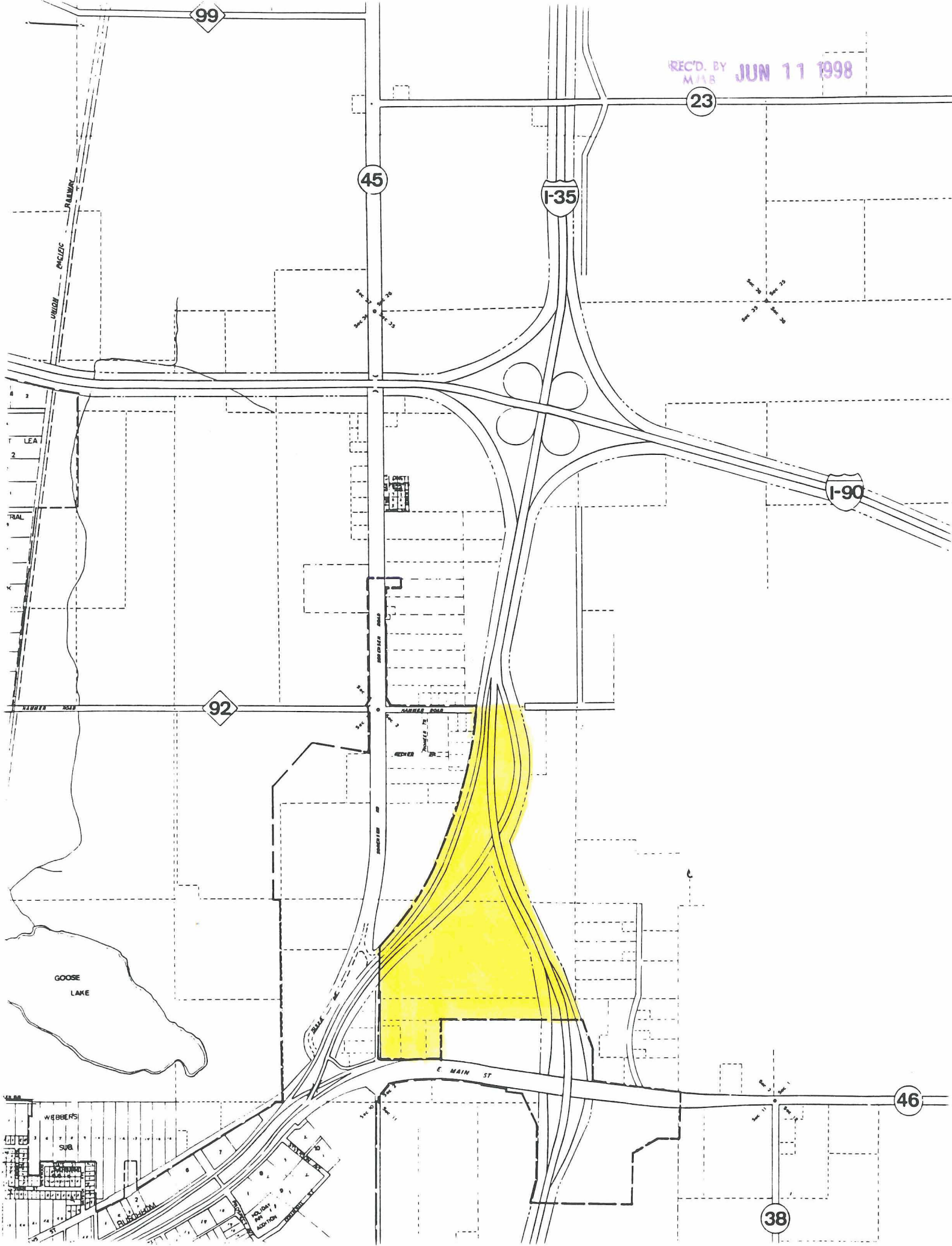
Dated June 18, 1998
City Clerk Sandi Behrend

By authorized deputy _____

DRAWING OF TRACT
FOR ANNEXATION PURPOSES
IN W 1/2 SECTION 2-T102N-R21W
CITY OF ALBERT LEA, FREEBORN COUNTY, MINNESOTA

REC'D. BY JUN 11 1998
MAM





REC'D. BY
MMB JUN 25 1998

COPY

7A

CONVENTIONAL SYMBOLS

Building Remover Easement	B.R.E.
R/W Parcel Number	3
Access Control	o
Access Opening	o
201 Iron Monument or 1/2" M.H.D. Iron Pipe with Aluminum Cap	o
3/4" M.H.D. Iron Pin	o
Other Iron Monument	o
Concrete or Stone Monument	o
R/W Boundary Corner	o

Distances shown to feet, 1/16, 1/32, etc. are exact extrinsic values.

SURVEY STANDARDS

The standards and equipment used in the control surveys for this plat and the checks made on monument values are the following:

The state plane coordinates shown on one cast iron monument are within 0.3 ft., one standard deviation, as shown in the control survey to national control monuments.

The state plane distances and bearings are based on the project control survey system. The cast iron monuments are within 0.1 ft. one standard deviation, of their mathematical position.

Under no circumstances have been filed at the Register of Deeds office for the section corner monuments shown on this plat.

The results of the control survey and land survey reflect the M.H.D. for Survey Report of R/W plat.

THE COMMISSIONER OF HIGHWAYS IS HEREBY DESIGNATING THE DEFINITE LOCATION OF TRUNK HIGHWAY NO. 35 FROM THE JUNCTION OF TRUNK HIGHWAY NO. 16 TO 0.5 MILE NORTH.

As shown on this plat prepared by the State of Minnesota Department of Highways, is hereby certified as the official plat of that portion of said T.H. 35 within the designated portion of Section 2, and the Commissioner's Order therefor, pursuant to Minnesota Laws of 1949, Chapters 207, 208 and 209 (now codified as Minnesota Statutes 1969, section 161.16 subd. 2, section 160.14 subd. 1, and section 160.35 respectively).

Commissioner's Order No. 55769 Location Plot 24-2 Matter of Interest Subd. of the W 1/2 of SE 1/4 SEC. 2

Recommended for Certification:

Certified:

R. G. Brennaas Date Ray Leppgaard Date
Director of R/W Operations Commissioner of Highways

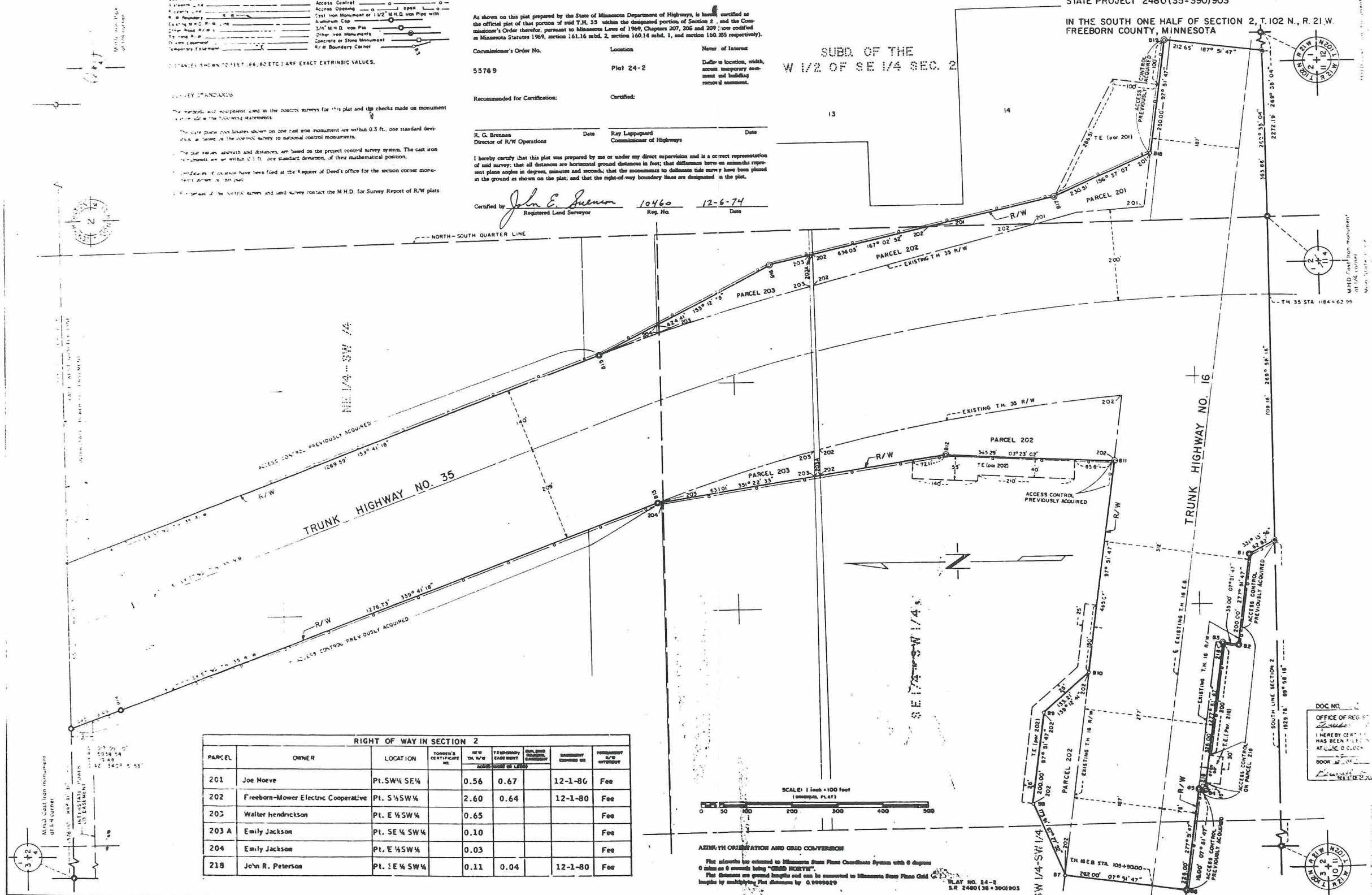
I hereby certify that this plat was prepared by me or under my direct supervision and is a correct representation of said survey; that all distances are horizontal ground distances in feet; that distances between points are represented in degrees, minutes and seconds; that the monuments to delineate this survey have been placed in the ground as shown on the plat; and that the right-of-way boundary lines are designated in the plat.

Certified by John E. Johnson 10460 12-6-74
Registered Land Surveyor Reg. No. Date

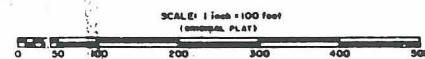
STATE HIGHWAY RIGHT OF WAY PLAT No.

STATE PROJECT 2480(35-390)903

IN THE SOUTH ONE HALF OF SECTION 2, T.102 N., R.21 W.
FREEBORN COUNTY, MINNESOTA



RIGHT OF WAY IN SECTION 2						
PARCEL	OWNER	LOCATION	TOWNSHIP CERTIFICATE NO.	R/W TH R/W	TEMPORARY EASEMENT	PERMANENT R/W
201	Joe Hoeve	Pl. SW 1/4 SE 1/4		0.56	0.67	12-1-86 Fee
202	Freeborn-Mower Electric Cooperative	Pl. S 1/4 SW 1/4		2.60	0.64	12-1-80 Fee
203	Walter Hendrickson	Pl. E 1/4 SW 1/4		0.65		Fee
203A	Emily Jackson	Pl. SE 1/4 SW 1/4		0.10		Fee
204	Emily Jackson	Pl. E 1/4 SW 1/4		0.03		Fee
218	John R. Peterson	Pl. SE 1/4 SW 1/4		0.11	0.04	12-1-80 Fee



AZIMUTH ORIENTATION AND GRID CONVERSION

This plat was oriented to Minnesota State Plane Coordinates System with 0 degrees 0 minutes 0 seconds being "GRID NORTH".
This plat was oriented to Minnesota State Plane Grid with 0 degrees 0 minutes 0 seconds being "GRID NORTH".
Lengths by multiplying Plat distances by 0.99999829

PLAT NO. 24-2
S.R. 2480(35-390)903

DOC. NO.
OFFICE OF REGISTER
I HEREBY CERTIFY
HAS BEEN FILED
AT 10:00 A.M.
BOOK 24-2